

JAPAN

HAKONE



2015

Winter/
Spring

vol.1

FREE

English
英語版

創刊号

箱根

HAKONE/ODAWARA VISITOR'S GUIDE



Mいi＊s＊M＊o＊☺
【ミスモ＊はこね】



懐石料理
花壇



Lunch 11:00a.m ~ 3:30p.m
Hana no Zen (OBENTO)
3,850yen
Kaiseki course
5,500yen ~ 20,000yen

Dinner 5:30p.m ~ 9:00p.m
Kaiseki course
5,500yen ~ 20,000yen

The consumption tax
will be added separately.

*Speciality of the Kaiseki cuisine featuring the seasonal taste every month
In the historic mansion of the royal family "Kan-in-no-miya"*

Contents

- 5 Getting to Hakone
- 6 Transportation HakoneFreepass,
Tickets information
- 8 Message
Hakone-town Tourist Assosiation
Chairman the board of directors
Shin Katsumata
- 10 Events of the year
- 12 Attractive sights
- 14 Foods and Souveniris
- 16 Odawara
- 20 Hakone-Yumoto
- 22 Miyanoshita, Gora
- 25 Sengokuhara, Lake Ashi
- 28 The locations with a view of Mt. Fuji
- 32 Hakone Map

【Culture and History】

- 4 Simple Japanese
- 7 How to behave Shrines and Temples
- 17 Japanese Culture for Rooms and Meals
- 19 History of Hakone, Odawara
- 23 How to take a hot spring "Onsen" or public bath in Japan



Hakone, known for its natural beauty that changes expressions with the seasons, is full of charms -- hot springs, museums and art galleries, historical buildings, leisure facilities, fantastic food and glorious view of Mt. Fuji, the world's cultural heritage site. Please visit Hakone that made tourists of the world a captive, and make lots of memories there.

Information published in this magazine is as of November 2014. There may be cases of prices having been changed since then, so please check with the stores before use. And there are instances of consumption tax or bathing tax, other service fees applied separately. The overnight stay prices are a single person charge on weekday (Monday to Thursday and Sunday, excluding the day before a holiday) overnight stay with two meals, for a room by two persons unless otherwise stated. ※ The details of what have been referred in this magazine could be changed or discontinued due to weather or other reasons. Please check with the organizer/facility/store before heading out.

Please note that the opening/business hours, charges, closed days, event opening periods and menu contents of facilities and stores published in this magazine are subject to change without notice.

Unauthorized reproduction/copying of photographs, illustrations, maps or articles in this magazine are strictly forbidden.

Kaiseki KADAN Tel. +81(0)460-82-3333
✉ kadan@gorakadan.com

located inside the luxurious inn GÔRA KADAN

1300 Gora Hakone-machi Ashigarashimo-gun Kanagawa Pref. Japan



ALL AROUND THE WORLD, UNIQUE IN THE WORLD
Our 500 restaurants & hotels offer the finest experiences all over the world.

花壇 GÔRA KADAN

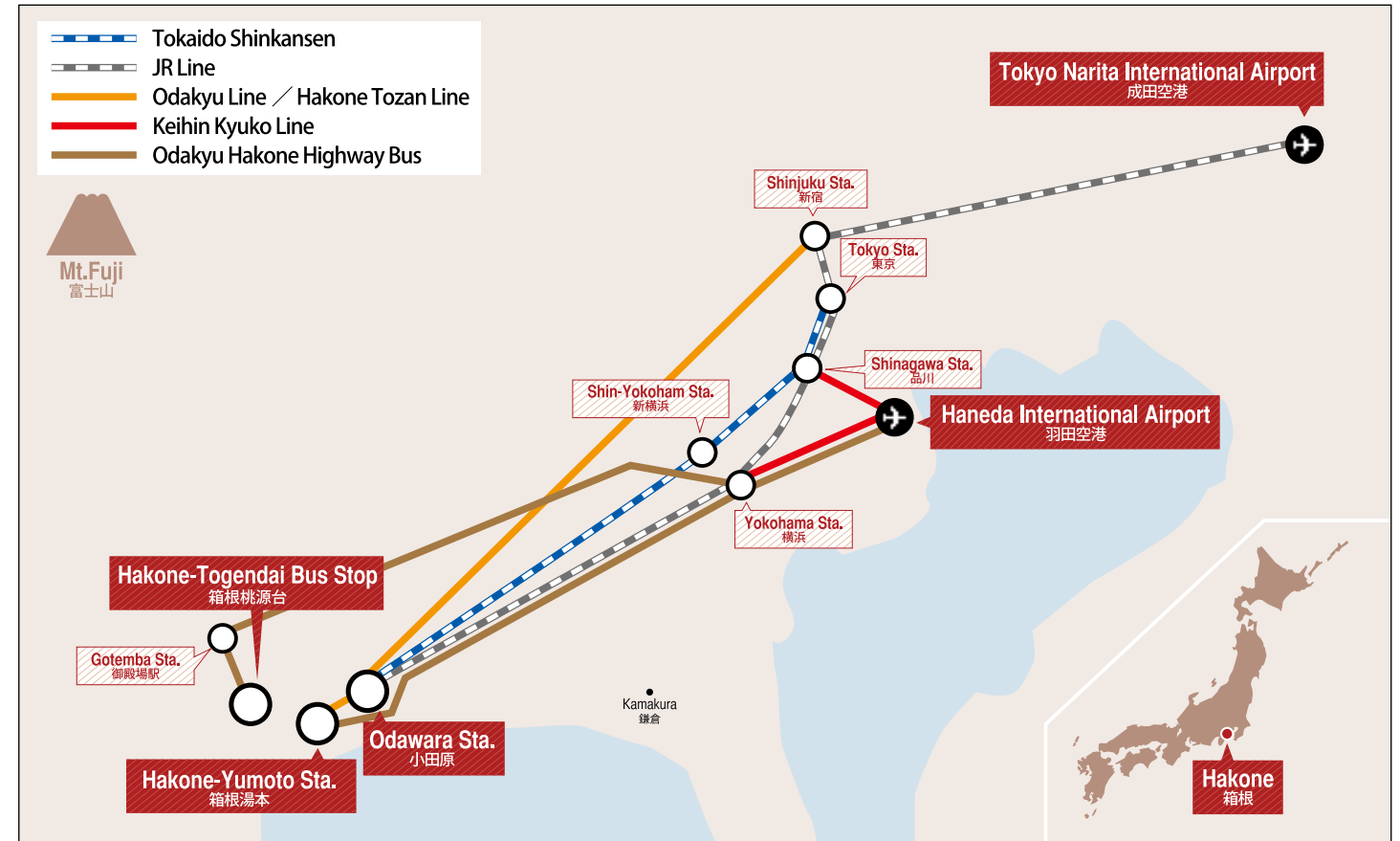
Tel. +81(0)460-82-3331
✉ reservation@gorakadan.com



www.gorakadan.com



Getting to Hakone



Point 1

Simple Japanese

If you can learn some simple Japanese, it will be useful when trying to communicate.

Greeting and Daily Conversation

Yes / No	hai / iie
Good Morning	ohayou gozaimasu
Hello	konnichiwa
Good evening	konbanwa
Goodbye	sayounara
Thank you	arigato gozaimasu
Excuse me	sumimasen
I'm sorry	gomennasai
It's delicious	oishi

Shopping and Eating

How much is it?	Ikura desu ka?
What do you recommend?	Osusume wa nan desu ka?
What is this?	Kore wa nan desu ka?
Do you have ○○?	○○ wa arimasu ka?
I'll have this, please.	Kore o kudasai
Can I pay using my creditcard?	Kurejitto Kaado de shiharai dekimasu ka?

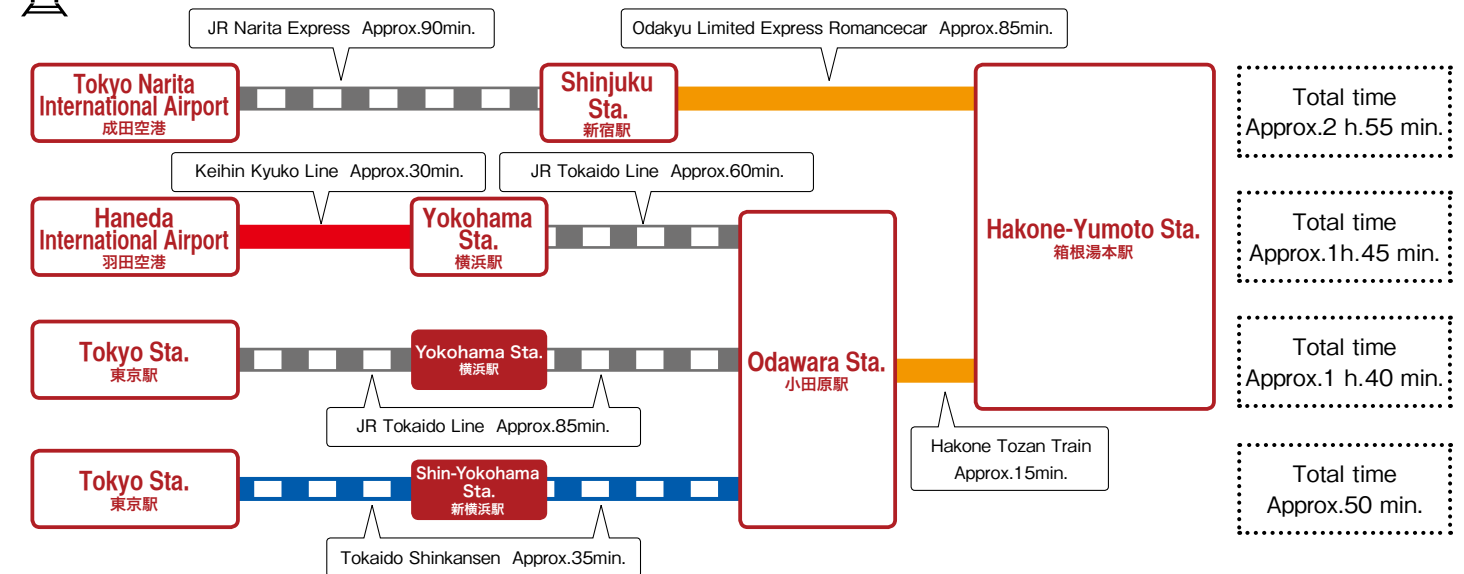
Sightseeing

Where is the ○○?	○○ wa doko desu ka?	How long will it take?	Jikan wa dore gurai kakarimasu ka?
I want to go to ○○.	○○ ni ikitai desu	Could you please take my/our picture.	Shashin o totte kudasai
Toilet	toire	Can you speak English?	Eigo wa hanasemasu ka?
Station	eki	I lost my ○○.	○○ o nakushimashita
Bus Stop	basunoriba		

Tourist office	kanko annaijo
Hospital	byouin

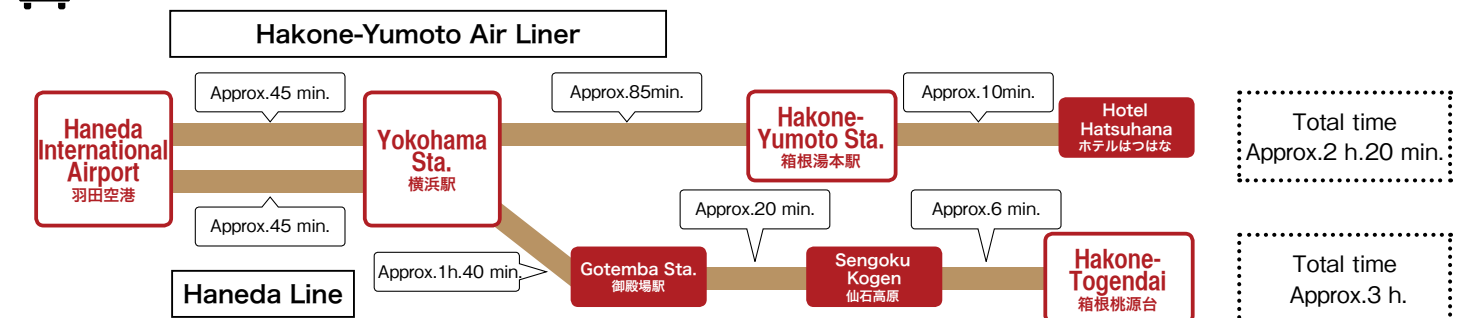


Train



Bus

Odakyu Hakone Highway Bus



*It is an example. Estimated time is subject to change depending on operation and road condition.



A convenient and economical excursion ticket Hakone Freepass

Enjoy the beauty of Hakone, surrounded by nature.

You can freely board eight different types of transportation in Hakone



All of the transport in the Hakone area which have this mark can be freely boarded.

For more information, refer to the brochure "箱根 HAKONE" available at all stations on the Odakyu line.



<8 different types of transportation>

- Hakone Tozan Line
- Hakone Tozan Cable Car
- Hakone Ropeway
- Hakone Sightseeing Cruise
- Hakone Tozan Bus (in designated zones)
- "KANKO SHISETSU-MEGURI" Bus (Tourist Attraction Sightseeing Bus/Hakone Tozan Bus)
- Odakyu Hakone Highway Bus (in designated zones)
- Numazu Tozan Tokai Bus (in designated zones)

<Sample fares>

	2 days	Adult	Child
From Shinjuku		5,140 yen	1,500 yen
From Odawara Gotemba		4,000 yen	1,000 yen

* Fares may vary depending on the starting station and length of validity. * 3 days ticket also available

<Examples of trips in Hakone using the Freepass>



* An additional limited express surcharge is required to ride the Romancecar.

Take the quick, comfortable Romancecar to Hakone! (Reservation required)



Passengers with a Freepass from Shinjuku to Hakone can board the Romancecar (reservations required) if they purchase the special express ticket (890yen).

<Romancecar limited Express surcharge & Normal fare>

limited Express Surcharge	Odawara	Hakone Yumoto	Normal fare	Odawara	Hakone Yumoto
From Shinjuku	890 yen	890 yen	From Shinjuku	880 yen	1,190 yen

Shinjuku to Hakone-Yumoto: approx. 85 min * Normal express train: approx. 115 min.

* With Hakone Freepass from Odawara and travel between Shinjuku and Hakone-Yumoto, by Romancecar, normal fare and limited express surcharge are required. Please contact staff for more information.

Places where the Freepass is available

1 Any Odakyu Line station

2 Odakyu Sightseeing Service Center, Shinjuku [Business hours 8:00-18:00]

Odakyu Sightseeing Service Center is special service counter for foreign tourists. English speaking staff are always available (on certain shifts Chinese speaking and Korean speaking staff are also available). They offer information about sightseeing along the Odakyu line in places like Hakone and Enoshima, as well as sales of tickets and Freepasses.

TEL:03-5321-7887
FAX:03-5321-7886

E-mail:welcom@odakyu-dentetsu.co.jp
WEB:www.odakyu.co.jp/english



Odakyu Sightseeing Service Center (Shinjuku)

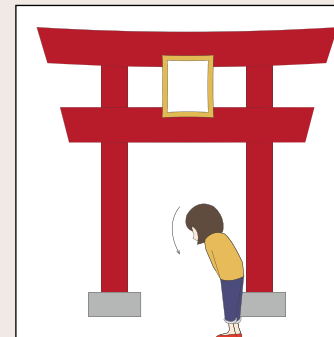
There is also an Odakyu Sightseeing Service Center in Odawara.

Business hours 9:30-17:30
TEL:0465-24-4101

Point 2

How to behave Shrines and Temples

Shinto shrines are places to pray to Japanese gods, and temples are places that enshrine images of Buddha and teach Buddha's wisdom. They are all sacred places, so please avoid being noisy, and behave calmly and peacefully.



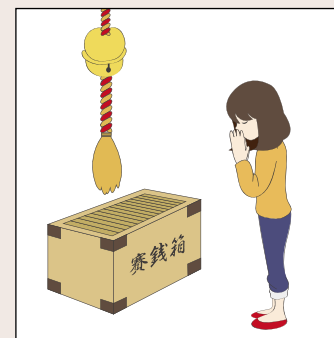
1 Bow lightly before passing through a 'torii' gate.

The area beyond the 'torii' gates is sacred ground, so please bow lightly before you pass through them. The center of the roads leading up to shrines is considered to be the route used by the gods, so please walk a little to the left or right.



2 Purify your hands and mouth using 'chozu'.

After you pass through the 'torii' gates, there is a place, named 'chozu', to purify your hands and mouth. Fill the ladle with water, and rinse your left hand first, then your right hand. Next pour water into your left hand, and lightly rinse your mouth. (You must not drink directly from the ladle.) Finally, lift the ladle up and let the water run down the handle.



3 The ritual for visiting is to bow one's head twice, clap twice, then bow once more.

Ring the bell in front of the shrine. Throw a coin into the offertory box, and then bow your head deeply twice, clap your hands twice. Pray for a few seconds and bow deeply once more.

Differences when visiting a temple

- Temples do not have 'torii' gates, so it is best to bow your head before the main temple gates.
- When visiting a temple, you should not clap your hands together. After bowing your head deeply, put your hands together in front of the breast and make a prayer.



Enjoy Lake Ashi cruise with a view of Mt. Fuji

When seen from the air, Mount Fuji is more wonderful than ever

Take a Ride and Enjoy Hakone

Hakone Lake Hotel
Our hotel is proud of our Hot Springs (3 minutes walk from Togendai Station)



The interior of the Royal II is decorated with 3D art

From the sky, the cherry blossoms and new leaves look magnificent



When it snows, the world turned white

Owakudani original curry and rice with deepfried pork cutlet with soft-boiled egg



Owakudani Ekisyokudo (The restaurant in Owakudani Station)

箱根海賊船

Hakone Sightseeing Cruise ☎0460-83-7722

http://www.hakone-kankosen.co.jp/foreign/en

Unlimited rides on the Hakone Sightseeing Cruise and the Hakone Ropeway with Sightseeing Cruise & Ropeway 1Day Ticket / Hakone Freepass

Take commemorative photos with the pirates



箱根ロープウェイ

Hakone Ropeway ☎0465-32-2205

http://www.hakoneropeway.co.jp/foreign/en/

Commemoration of First-Issue of the

MiSMO Hakone
English

— MESSAGE —

Welcome to Hakone
which is rich in History, Nature,
Hot Springs, and Fine Cuisine.

Hakone-town Tourist Association
Chairman the board of directors

Shin Katsumata

勝俣 伸さん

Profile

Mr. Shin Katsumata was born in Hakonemachi Kanagawa prefecture in 1953. He started working at the Fujiya Hotel in 1976. Later, he became the General manager of both the Yumoto Fujiya Hotel and the Fujiya Hotel. He was appointed as president in 2004 and chairman in 2010. In 2013, he was also appointed as the chairman of the Tourist Association.

His hobbies include mountain climbing and he can be often found in the local mountains such as Mt. Kintoki in the mountain ranges surrounding Hakone.

Hakone, a place loved by many foreign tourists.

We asked Mr. Shin Katsumata who knows every detail of Hakone about the attractions, sights to see, and recommended ways to spend time which are unique to Hakone.

In Hakone, places of historical cultural heritage, a wide variety of hot springs, and areas of scenic beauty are all found in one place. It is easy to get to and from the airport as well as the center of Tokyo. Public transportation facilities in the area are abundant, which is unique charm of Hakone. The altitude rises 1000m from the gateway of Hakone Yumoto up to Ashinoyu. Connected by mountain trains, cable cars, ropeways, sightseeing boats, and regular buses, you can enjoy a wide variety of scenery everywhere.

In addition, because of this difference in

altitude, you can enjoy cherry blossoms and autumn leaves for a long period of time. Have a good time taking hikes and walks. For those who are interested in art, we also recommend visiting museums with sculptures along with other Japanese and Western works of arts which are created within nature.

Hakone is splendid whichever season you visit, but especially in late autumn, the shiny silver Japanese pampas grass in Sengokuhara and Daigatake is a must-see. In addition, winter when the air is clear is the season when beautiful views of Mt. Fuji can be seen

distinctly. Places around the Moto-Hakone Port overlooking Lake Ashi and the red Shinto gateway are in particular the best places to see this magnificent view.

One major attraction is the 20 different hot spring spas which have various histories, spring qualities, and benefits, such as the oldest hot spring in the region which dates back to the ancient Nara Era. There are large baths as well as accommodations equipped with private baths, and day-use spas for you to enjoy. The delights of the cuisine are also abundant. You can enjoy a variety of tastes

with local specialties such as "pond smelt" which is served simply fried or deep-fried and marinated in a spicy sauce, in addition to healthy Japanese cuisine which utilizes fine fresh local produce and seafood directly delivered from neighboring areas, as well as fine French Cuisine and sweets.

Once you visit Hakone, you will be able to understand its magnificence and deep profoundness. We are looking forward to seeing you in Hakone.

Events of the year *in Hakone*

Sengokuhara
Yudate Shishimai
仙石原湯立獅子舞



Mountain Burning of Sengokuhara
Pampas Grass Fields すずき草原山焼き



May

- mid Mountain Burning of Sengokuhara Pampas Grass Fields (Sengokuhara)
- 27 Sengokuhara Yudate Shishimai (Hot Water Lion Dance Ritual)



Azalea at Horaien
蓬萊園のツツジ



春
spring

Cherry blossoms in Miyagino
at Hayakawa riverside
宮城野の早川堤の桜

July

- 15 Miyagino Yudate Shishima (Hot Water Lion Dance Ritual) (Miyagino /Suwa Shrine)
- 31 Lake Ashi Festival (Moto-hakone/ Lake Ashi)

August

- 4 Kojiri Ryujin Festival (Kojiri/ Lake Ashi)
- 5 Torii Burning Festival (Moto-hakone/ Lake Ashi)
- 16 Hakone Daimonji-yaki bonfire (Gora/Miyagino)

Hydrangea of Amidaji Temple
阿弥陀寺のアジサイ



Hiryu Falls
飛龍の滝



Hakone Daimonji-yaki bonfire
箱根大文字焼



夏
summer



Lake Ashi Festival
湖水まつり

秋
autumn

Autumn leaves of Lake Ashi
芦ノ湖の紅葉



October

- mid Ashikari Festival (Ashi-no-yu)
- 24 Motomiya Yearly Festival (Summit of Komagatake)

November

- 3 Hakone Daimyo Procession (Hakone-Yumoto)

Hakone Daimyo Procession
箱根大名行列



Sengokuhara Pampas Grass Fields
仙石原のススキ草原



January

- 2,3 Tokyo-Hakone Collegiate Ekiden Relay Race
- 5 Lake Ashi Kosuibiraki (Moto-hakone/ Lake Ashi)

February

- 3 Setsubun Festival (Hakone Shrine)

View of Lake Ashi and Mt. Fuji
from Onshi-Hakone Park
箱根恩賜公園からの芦ノ湖と富士山



冬
winter

Attractive sights in Hakone

Odawara
小田原

Sengokuhara
仙石原

Miyanoshita, Gora
宮ノ下・強羅



Sengokuhara Pampas Grass Fields
仙石原アスキ草原
The fields filled with pampas grass lie at the foot of Mt. Daigatake. They are a famous place that showcase autumn in Hakone. The golden fields swaying as one in the autumn breeze are a superb sight to behold!



Owakudani 大涌谷
Created roughly 3,000 years ago by the Hakone Volcano. It is the source of Hakone's hot springs, and even now you can feel the power of the volcanic activity. It is also popular for its gorgeous views of Mt. Fuji.

Moto-Hakone, Hakone-Machi
元箱根・箱根町

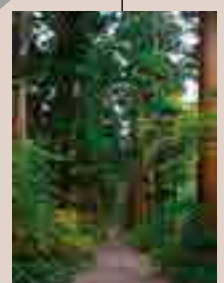
Hakone Sekisho
(Check-point)
箱根関所
The Hakone Checkpoint was the main point for traffic along the Tokaido, a highway which connected Edo (now Tokyo) and Kyoto in the Edo period (it was established for inspections and tax collection). The building from that era has been recreated.



Hakone Shrine
箱根神社
This shrine was established in the Nara period to worship all the local gods of the Kanto region. It is known for blessings related to better fortune, warding off evil, the realization of one's wishes, and road safety.



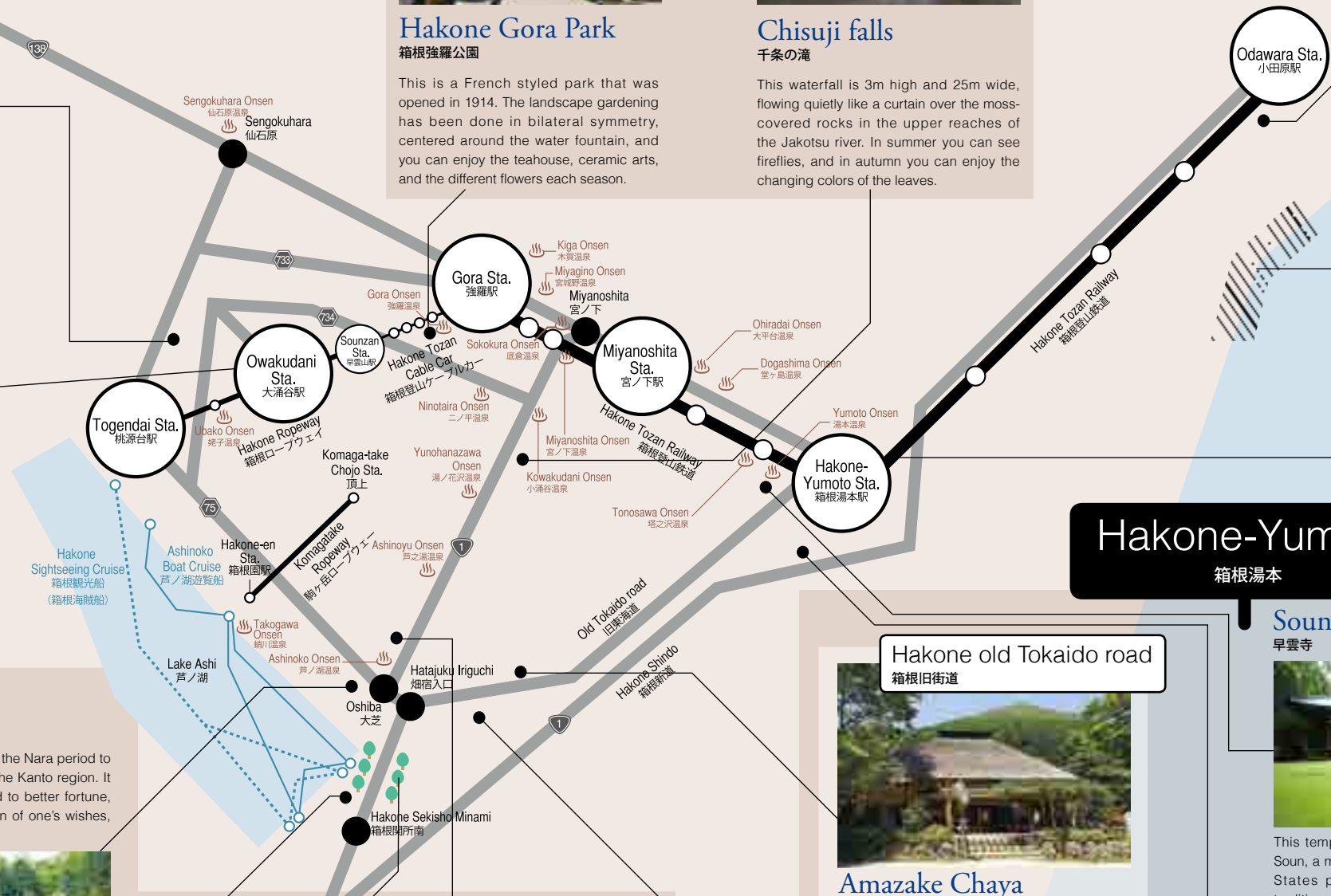
Cedar Avenue
杉並木
This is a unique avenue of cedars along the Tokaido, which were planted to provide shade for travelers. There are still cedar trees here that are over 350 years old.



Hakone Gora Park
箱根強羅公園
This is a French styled park that was opened in 1914. The landscape gardening has been done in bilateral symmetry, centered around the water fountain, and you can enjoy the teahouse, ceramic arts, and the different flowers each season.



Chisuji falls
千条の滝
This waterfall is 3m high and 25m wide, flowing quietly like a curtain over the moss-covered rocks in the upper reaches of the Jakotsu river. In summer you can see fireflies, and in autumn you can enjoy the changing colors of the leaves.



Odawara Castle
小田原城
This castle was constructed by Omori Yoriharu to rule over the region of Nishisagami during the Muromachi period. Five generations of the Late Hojo Clan ruled from the castle, and it is said to have been the largest fortress in Japan during the Warring States period.



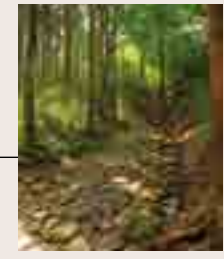
Odawara Fishing port
小田原漁港
This fishing harbor is where a great many types of fish are caught, including mackerel, sardine, and horse mackerel. There are many locations around the harbor where you can freely enjoy the taste of fresh seafood cuisine.

Hakone-Yumoto
箱根湯本

Hakone old Tokaido road
箱根旧街道



Amazake Chaya
甘酒茶屋
This tea house is on the Hakone old Tokaido road, and was established in the early days of the Edo period in what is said to be the most perilous spot on the Tokaido. Be sure to taste their amazake (sweet drink made from fermented rice) which has remained the same since they first opened.



Sounji Temple
早雲寺



This temple was founded by order of Hojo Soun, a military commander from the Warring States period. The grounds contain a traditional dry landscape garden, as well as the tomb for the five generations of the Late Hojo Clan.



Hakone-Yumoto
箱根湯本

Yumoto-Kenban
湯本見番

This geisha agency is where the geisha train daily in various skills that include dancing and poetry. Events are also held to suit each season.

This is the most lively hot spring district in Hakone. There are hot springs for day trips as well as well-established ryokans, and the streets surrounding the station are lined with restaurants and souvenir shops.



Owakudani Black Egg

大涌谷黒たまご

Black Eggs are a specialty of Owakudani, and are made of boiling eggs in hot spring ponds at approximately 80°C, and then steaming them in a pot at approximately 100°C. The shell turns black due to its reaction to the mineral elements of the hot springs. It is said that if you eat one egg, you will be blessed by Jizo-Bosatsu (guardian of long life and child-rearing) and your life will be extended by 7 years. In Owakudani you can watch the process being done in front of you.



Yuba & Tofu

湯葉&豆腐

Tofu is made from squeezing soy beans to create soy milk and then adding bittern, and yuba is made from collecting the skin that forms when heating soy milk. Tofu and yuba made from the delicious waters of Hakone are famed for their flavor and aroma.



Odawara Chochin (Odawara Lantern)

小田原ちょうちん

These paper lanterns are made of attaching paper to a frame of thin bamboo sticks and placing a candle inside. Odawara Chochin are said to have been created during the Edo period for travelers crossing the Hakone mountains. They can be folded and put away, and are resistant to rain and fog, and as they are partially made from sacred trees, they were also used as a talisman against evil.



Yosegi-Zaiku (parquetry goods)

寄木細工

Hakone Yosegi-Zaiku are made of combining various kinds of wood to create geometric shapes that utilize the hues and grains of the wood. These are then planed down and affixed to small boxes and other items. This craft dates back to the late Edo period and a wide range of goods, including boxes and coasters, are still made today as traditional Hakone craftworks.



Onsen Manju (hot spring steamed bun)

温泉まんじゅう

This famous hot spring steamed bun is named for the fact that hot spring water is used in the dough, and the steam from the hot springs is used when steaming it. In addition to being sold in boxes to take home as gifts, there are also stores that sell them individually, so be sure to try a freshly steamed bun!

Hakone, Odawara Foods & Souvenirs



Soba (buckwheat noodles)

そば

This is the traditional Japanese foods back 300 years. The noodles are made from grinding the seeds of buckwheat grain, and offer a rich aroma and enjoyable texture. The deciding factor when making soba is the water. Soba made from the famous mineral waters of Hakone uses high quality water, so it is famous for being even more delicious.

Umeboshi (pickled plums)

梅干し

Umeboshi is ume fruit that has been pickled with salt and dried in the sun. Umeboshi has been used as portable food during wartimes since the reign of the Odawara Hojo clan, and was highly valued in the Tokugawa period by samurai accompanying daimyo, and travelers passing through Hakone. There are also varieties of umeboshi unique to Odawara, including 'shiso-maki umeboshi' (pickled ume wrapped in perilla leaf).



Kamaboko (fish cake)

かまぼこ

Kamaboko is made from kneading minced white fish and steaming it, and it is known for its characteristic elastic texture and rich flavor. In the Edo period it was difficult to travel long distances, so Odawara kamaboko was served at local inns in Hakone, as it was a good way to preserve the fresh fish caught around Odawara. Descriptions of its delicious flavor soon spread nationwide.



Seafood Cuisine

海鮮料理

Hakone and Odawara are located between Sagami Bay and Suruga Bay, allowing an abundant harvest of seafood and fresh fish, which means there is a wide variety of seafood cuisine, including sushi and fresh fish dishes. Odawara has its own fishing harbor, allowing you to enjoy freshly caught fish and seafood.

Wakasagi (pond smelt)

わかさぎ

Wakasagi is a freshwater fish found in Lake Ashi, which has been used in local cuisine since ancient times. It is a local specialty of Hakone, and has been selected as one of the "Top 100 Local Specialties in Kanagawa". You can try a variety of dishes at restaurants near Lake Ashi, such as fried fish and sweet boiled fish.





1 Our attractive Ten-zaru dish has light and crispy fried tempura on traditional soba noodles, with dipping dashi soup, from 1,900yen + tax.
2 Tasty, salty-sweet eel from 3,100yen + tax.

Please enjoy our noodle, the representative cuisine of Japan

Soba noodles are well-suited to tempura, and you can enjoy an exquisite flavor when eating them together. So the Japanese have been loved them for a long time. We use high quality domestic buckwheat flour for our soba. These flavors also go well with sake and shochu. We also offer Wagyu beef sirloin and eel dishes.

Soba-dokoro Hakone-no-iori 箱根のいおり そば処 箱根乃庵

☎ 0460-85-8498 MAP P16 ②
 ■ 25-8 Hakone-Yumoto, Hakone-machi, Ashigarashimo-gun, Kanagawa
 ■ 11:00-21:30 ■ Closed on Wednesdays ■ Parking Available
 ■ 4 minutes walk from Iriuda Station (Hakone Tozan Railway)
 ■ http://www.hakone-iori.jp/



1 A thrilling adventure in the treetops, more than 10m above ground.
2 Admission (including insurance): Adults (18 or over) 3,600yen, Children (ages 6-17) 2,600yen. Family discounts available.

An exhilarating adventure on the treetops

This is an natural trees in their original state. Equip with our special safety harness and move from tree to tree while enjoying 40 different activities. Our two-hour course can be challenged by first grade elementary school students and above. Even adults will appreciate the sense of accomplishment.

Forest Adventure Odawara フォレストアドベンチャー・小田原

☎ 080-4330-4030 MAP P31
 ■ 4391-1, Kamenokouyama, Kuno, Odawara, Kanagawa
 ■ Open 9:00-17:00 ■ Closed on Thursdays ■ 15 minutes by bus from Odawara Station (JR, Odakyu Line) ■ http://www.forest-aventure.jp



Buffet : Elennagosso

In the morning, Elennagosso's chefs go to the local fish market and select the freshest seafood available. They also mainly use vegetables from local farmers grown using fertilizer made from leftover fish. Enjoy as much of our local delicacies as you like at this sustainable restaurant's all-you-can-eat buffet.



Buffet : Weekdays
 ● Lunch / 11:00~14:45 ¥1,850
 ● Tea Time / 15:00~17:00 ¥1,300 (snacks&sweets)

Weekends and holidays
 ● Brunch / 9:30~11:00 ¥1,500
 ● Lunch / 11:00~17:00 ¥1,850
 ● Child / age 4~12 Half price
 ● Child / 3 and under free



245 Kazamatsuri, Odawara city, Kanagawa, Japan
 ■ Short walk from Kazamatsuri Sta., 10min drive from Odawara Sta.
 ■ 7 days a week.
 ■ Payment by credit cards accepted. http://www.kamaboko.com/english/



Specialty Rice Bowl Restaurant Run by a Local Fish Dealer

Our specialty restaurant offers seafood rice dishes, and is a hot topic on TV and in magazines in Odawara. We are directly managed by an Odawara Port fish dealer, so you will be delighted by both the quantity and the excellent taste. Enjoy discovering your favorites from 40 different varieties of seafood rice dishes. Our menus have been created by our fresh fish experts, and whether you enjoy a rice bowl, sashimi or tempura, you will remember its distinct flavor. You can take a commemorative photo inside our restaurant, which is decorated with the traditional banners fisherman hoist when they get a plentiful haul of fish.



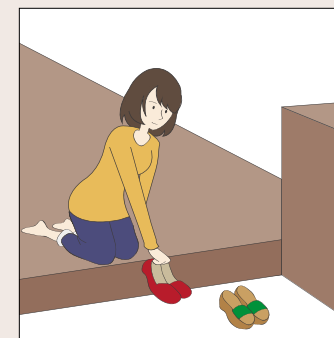
1 Our Impressive 'Lobster Rice Bowl' is 1,780 yen + tax.
2 We offer a wide variety of 40 different types of seafood rice dishes, many of which you will not find elsewhere.
3 Our interior lets you savor the atmosphere of a Japanese fish market.



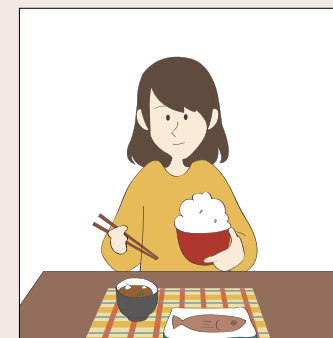
Kaisendonya Odawara Kaishu 海鮮丼屋 小田原 海舟

☎ 0465-24-2237 MAP P16 ①
 ■ 1-14-55 Sakaecho, Odawara, Kanagawa
 ■ Weekdays: 11:00 - 18:00 / Sat/Sun/ Holidays: 11:00 - 19:30
 ■ Open 365 days
 ■ 3 minutes walk from Odawara Station (JR / Odakyu line)

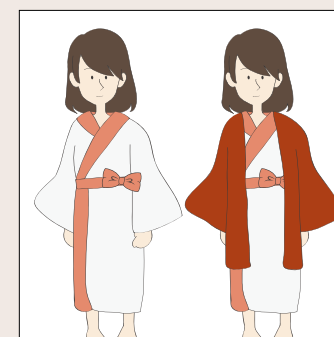
Point 3 Japanese Culture for Rooms and Meals Please take particular care for characteristic Japanese culture and customs when eating meals or staying at a ryokan (a Japanese-style inn) which has a traditional Japanese aura.



1 It is standard to remove your shoes in the entry hall before entering a room.
 In the front door, you should take off your shoes while facing forwards, then enter the room. You should then bend down and turn your shoes to face the other way and align them neatly.



2 Bowls should be held in your hand when eating.
 The bowl containing your rice as well as your soup bowl and other bowls should all be held in your hand while eating from them. When using chopsticks, please avoid squeezing them too tightly, crossing them over each other, or stabbing your food with them.



3 Try wearing your yukata around the ryokan.
 A yukata is a traditional type of Japanese clothing, often worn after bathing or while sleeping. Be sure to put the left-hand side across the top when putting it on. When staying at a ryokan, you are welcome to wander around in your yukata.

Simple Facts about Japanese-style rooms and Tatami Mats
 ■ A Japanese-style rooms is a room on whose floor tatami mats are laid. Their feature is that these rooms can be used for many purposes, such as a living room, bedroom, or guest room. A single tatami mat is roughly 180cm x 90cm, and is counted as 1 'jo' (a specific Japanese counter for tatami mats).
 ■ Tatami mats are a Japan-specific type of flooring. The facing of tatami mats is woven grass, meaning they are highly absorbent, warm in winter, and cool in summer. Their fragrance also has a relaxing effect.

What is Kamaboko?

Kamaboko is a seafood product that is steamed, baked, fried, or poached. Kamaboko is made from white fish, which is filleted, pounded into a paste, mixed with salt, sugar, egg whites, fish sauce and Japanese sake. You can enjoy the goodness of fish with a delicious flavor and a unique texture - smooth and chewy.



What is Kamaboko made from ?

Kamaboko is made from all natural ingredients: wild white fish, egg whites, salt, sugar, fish sauce and Japanese sake. It contains no artificial coloring or seasonings, and no preservatives. Kamaboko's white color and unique texture come from all-natural ingredients and are the result of the interaction of fish, water, and salt during the production process.



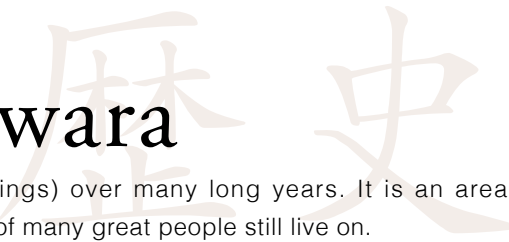
<http://www.kamaboko.com/english/>

245 Kazamatsuri, Odawara city, Kanagawa, Japan
Short walk from Kazamatsuri Sta., 10min drive from Odawara Sta.



Make your trip
more
enjoyable!

History of Hakone, Odawara



In Hakone, the Hakone volcano has produced caldera and onsen (hot springs) over many long years. It is an area overflowing with mystery and history, where countless legends and the vestiges of many great people still live on.

<Nara Period to the Warring States Period>

Hot springs were opened in the Nara period (around 700AD). The hot springs were related to the Late Hojo Clan of the Warring States period.

According to one theory, the hot springs of Hakone were first opened in the Nara period (around 700AD). According to folklore of the time, "When 'Kiyosada', a priest of Kaga and disciple of Taicho, came to Hakone-Yumoto to pray and study, the hot springs began to flow, and the small pox which had been afflicting the people was cured". During the Warring States period (from around 1495 AD onwards), the Late Hojo Clan ruled as daimyos over the whole Kanto region for five generations from their base in Odawara Castle. Odawara prospered as a center of politics, economy and industry. Soun Hojo, the founder of the clan, was enshrined in 'Soun-ji' in Hakone-Yumoto, so military commanders would often visit Hakone to pay homage. The source of the springs near Soun-ji that the military commanders bathed in still remains, and the hot water there still continues to flow.



Odawara Castle was the ruling castle for five generations of the Late Hojo Clan from around 1496 onwards. It is now a castle ruins park, where beautiful views can be seen from the castle towers.

A statue of Soun Hojo at the west entrance of Odawara Station.



The 'Taiko Stone Bathing' in the Miyanoshta hot spring. This is the remains of the open-air bathtub created by Hideyoshi to heal his troops, and is no longer used for bathing.

<Warring States Period to Edo Period>

A place of healing for troops during Hideyoshi Toyotomi's attack on Odawara (1590). Its name come to back be known nationwide.

The 'Battle of Odawara' (1590) was daimyo Hideyoshi Toyotomi's final battle in his unification of the country. Hideyoshi spent two months fortifying Ishigakiyama in order to capture Odawara Castle. It is said that during the protracted war, Hideyoshi built a stone bathtub that utilized the hot springs of Jakotsu river in Miyanoshta, and used it to heal his soldier's wounds, as well as bathing in it himself.

In addition, at the height of the war, Hideyoshi held a tea ceremony and SEN no Rikyu, Ieyasu Tokugawa, Masamune Date, and Yodogimi all visited, allowing the area to prosper. It is said that Hime-no-mizu, a famous mineral water from Ohiradai, was used by Hideyoshi Toyotomi for the tea ceremony, and that the daughters of the Late Hojo Clan and the Toyotomi Clan used it as a face lotion. From then on, many women visited Hakone in order to follow their example.

<Edo Period to Meiji and Taisho Periods>

Transportation networks arranged by Ieyasu Tokugawa and Yukichi Fukuzawa, and the development of popular tourist attractions.

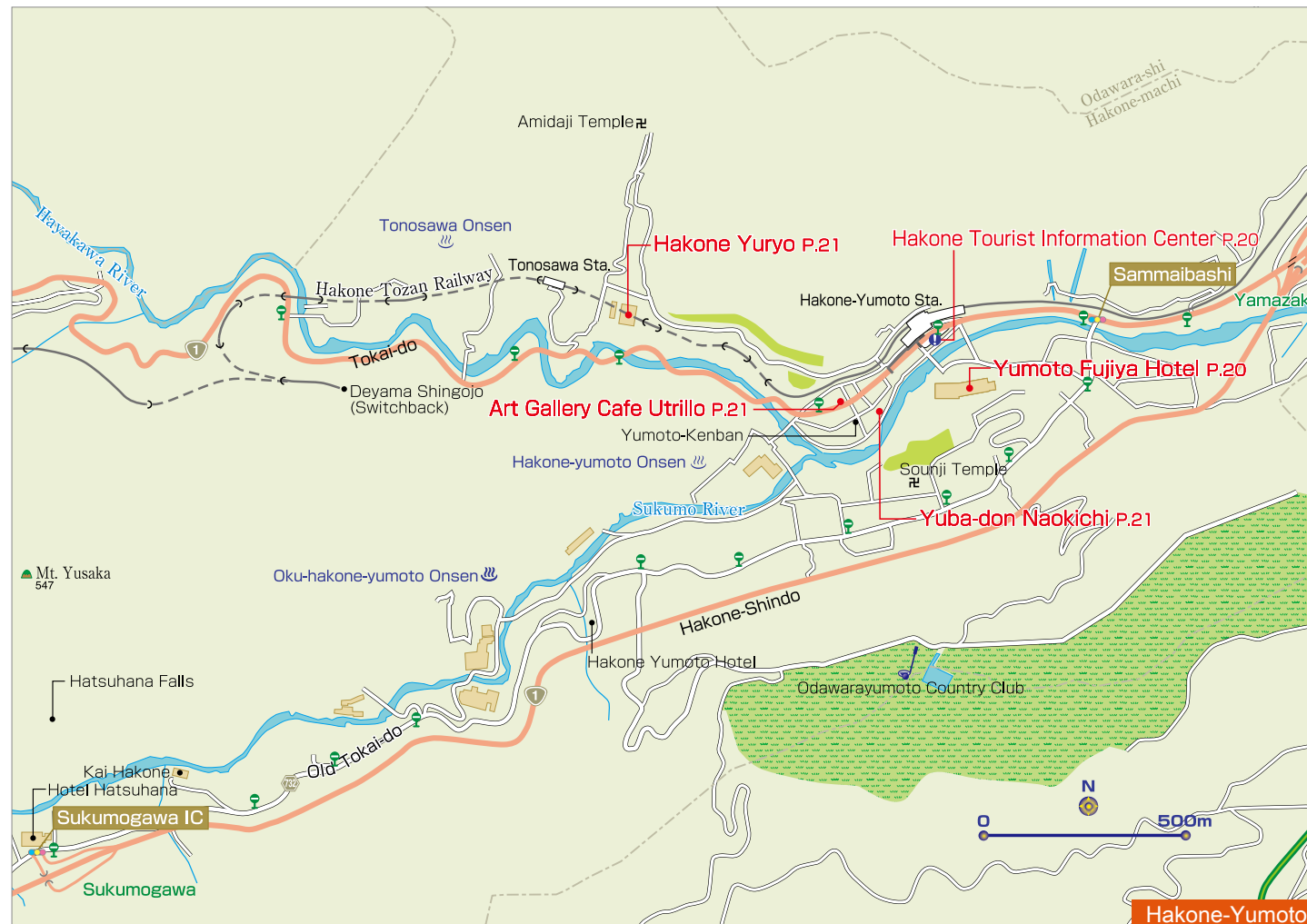
In 1603, Ieyasu Tokugawa, who set up the Edo shogunate, began work on the Tokaido highway. A hot spring health resort was born in Hakone, and it became famous for the '7 Hakone Hot Springs'. However, the inaccessibility of the hilly roads became known as the most perilous part of the Tokaido, and then in 1626 the shogunate established the 'Hakone Checkpoint' in order to secure defence of Edo.

From the Meiji period onwards, the 'Hakone Checkpoint' was abolished, and development of the area progressed as a location for recuperation and sight-seeing. Yukichi Fukuzawa enjoyed visiting the hot springs of Hakone, and after talking to local sympathizers, he assisted with the development of National Route 1 linking Odawara and Hakone. In 1877, Fujiya Hotel was opened as a hotel aimed at overseas visitors. Railroads were also established thanks to Odakyu Electric Railway, and the area developed as a popular, accessible tourist location.



The main role of the Hakone Checkpoint was checking for "letting in guns and letting out women". They particularly kept out a watchful eye for carried weapons, and wives of daimyos fleeing from Edo where they had been forced to live and held hostage.

※歴史や伝承の解釈には諸説あります。There are various theories regarding the history and the traditions.



1 Many regular customers come to enjoy our slow-cooked hashed beef (1,500yen) and Water Drip Coffee (Hot 900yen).
2 Our interior where you can relax in comfort.

Enjoy fine arts and coffee

Enjoy coffee amidst a retro ambiance while taking in the works of well-known artists including Maurice Utrillo. We also have a menu that includes spicy curry rice and a hamburger with mushroom sauce as well as 10-15 varieties of desserts.

Art Gallery Cafe Utrillo 画廊喫茶ユトリロ

☎ 0460-85-7881

MAP P20

■ 692 Yumoto, Hakone-machi, Ashigarashimo-gun, Kanagawa ■ 9:00-20:00
■ No Fixed Holidays ■ 3 minutes walk from Hakone-Yumoto Station (Hakone Tozan Railway) ■ <http://utrillo-v.com/>



1 Each Yuba-don(980yen) is individually boiled with egg, so this dish takes time and effort to prepare.
2 You can enjoy the scenery of the clear stream from our store windows.

Experience, delicious local dish called Yuba-don

Fresh Japanese yuba (tofu skin) is made by lifting the heated skin from soy milk with skewers. Our yuba, made from the finest quality soy beans, is boiled together with bonito broth, and layered with beaten eggs over rice. Our soft, delicious Yuba-don is a masterpiece of which everyone should taste at least once in life. We also have a free footbath at the front.

Yuba-don Naokichi 湯葉井 直吉

☎ 0460-85-5148

MAP P20

■ 696 Yumoto, Hakone-machi, Ashigarashimo-gun, Kanagawa ■ 11:00-18:00(L.O.)
■ Closed on Tuesdays(Open on Tuesday holidays)
■ 3 minutes walk from Hakone-Yumoto Station(Hakone Tozan Railway)



Hakone Tourist Information Center

Obtain the latest information of the whole Hakone area, such as sample trip plans and the best spots of the season here. English-speaking staff is always waiting to help plan your trip around Hakone.

Hakone Tourist Information Center

Open hours 9:00~17:45 (open every day)

TEL 0460-85-5700



1 Enjoy this lunch set with sushi and tempura for 2,430yen + tax.
2 You can easily see the hotel from Hakone-Yumoto Station.

Easy access to traditional Japanese cuisine

3 minutes' walk from Hakone-Yumoto Station. At 'Katsura - Japanese Cuisine and Sushi restaurant' within the hotel, you can enjoy delicious lunches at a reasonable price, including sushi, tempura, and soba noodles. Our recommended menus are soba noodles, sushi, and eel bowl carefully prepared by the hands of its chefs. You can also enjoy locally produced sake.

Yumoto Fujiya Hotel 湯本富士屋ホテル

☎ 0460-85-6111

MAP P20

■ 256-1 Yumoto, Hakone-machi, Ashigarashimo-gun, Kanagawa
■ Lunch: 11:30-14:00 (till 14:30 on Sat/Sun/Holidays) / Dinner: 18:00-20:30
■ Open 365 days ■ <http://www.yumotofujiya.jp/en/>
■ 3 minutes walk from Hakone-Yumoto Station (Hakone Tozan Railway)

森の温泉。森のめし。

箱根温泉

HOT SPRINGS

Large communal baths: "Honden Yurakuan Oyu"
Indoor baths, open-air baths, pottery baths, and sauna facilities

Adults (including children of junior high school age or older): 1,400 yen
Children (4-12 yrs.): 700 yen
Children 5 yrs. and under are not admitted.

Opening Hours: Open 365 days a year (the resort may occasionally be closed for maintenance work)
Weekdays: 10:00-21:00 (last admission at 20:00)
Saturdays, Sundays and public holidays: 10:00-22:00 (last admission at 21:00)

Private open-air baths: "Hanare Yuya Kaden"
19 private rooms available

Reservations can be made by telephone (0460-85-8411) up to one month in advance.

Fee for private room use (per room, per 60-minute period):		
Type 1 (7rooms)	Type 2 (8rooms)	Type 3 (4rooms)
3,900yen	4,900yen	5,900yen

Opening Hours: Open 365 days a year (the resort may occasionally be closed for maintenance work)
Weekdays: 10:00-21:00 (last admission at 20:00)
Saturdays, Sundays and public holidays: 10:00-22:00 (last admission at 21:00)

Hakone Yuryo — A hot spring resort that's easily accessible from Tokyo as a day trip

Hakone Yuryo can be reached easily from both Haneda Airport and Narita Airport, and is situated in one of Japan's most outstanding hot spring resort areas.

Experience a comfortable, enjoyable train journey on the Odakyu Line!

Tonosawa Sta.

Hakone-Yumoto Sta.

Odawara Sta.

Shinjuku Sta.

Yokohama Sta.

Approx 115 minutes

Approx 45 minutes

Approx 130 minutes

Narita Airport

Haneda Airport

Approx 90 minutes



1 Fujiya style rainbow trout, 2,200yen + tax. The trout is sautéed in butter, then combined with mirin, sweetened sake, and soy sauce. This dish was created in response to the requests by many non-Japanese guests, of the trout served as Japanese style.
2 "Hana Goten" (the Flower Palace) is the symbol of the Fujiya Hotel.

French cuisine at the old established hotel

This hotel was established in 1878 as Japan's first genuine resort hotel. It has been esteemed by many celebrities since then, including Helen Keller and Charles Chaplin. The main dining restaurant "Fujiya", with its coffered ceiling and the paintings of birds and flowers on it, has served an elegant and modern taste of French Cuisine.

Fujiya Hotel 富士屋ホテル

☎ 0460-82-2211 (representative) **MAP P 22**
 ■ 359 Miyanoshita, Hakone-machi, Ashigarashimo-gun, Kanagawa ■ Breakfast: 7:30-9:30/Lunch: 11:30-14:00 (14:30pm on Sat/Sun/holidays)/Dinner: 17:45-20:00(reservations required) ■ 7 minutes walk from Miyanoshita Station (Hakone Tozan Railway) ■ <http://www.fujiyahotel.jp/>



1 You can choose from the Kaiseki cuisine or Teppanyaki for dinner.
2 2 days/1 night from 37,500yen + tax per person. Luxury suite twin rooms from 95,000yen + tax per person. (The photo shows an example guest room.)

Impressive first-rate hospitality

We combine the warm, caring hospitality of a traditional inn with hotel service that respects your privacy. Each room is fully equipped with an open air bath which has its own continuously flowing source of water. Our restaurant boasts Japanese architecture and is protected as a national cultural asset. It is famous for its delicious cuisine that is also pleasing to the eye.

Hakone Suishoen 箱根・翠松園

☎ 0460-86-0852 **MAP P 22**
 ■ 519-9 Kowakidani, Hakone-machi, Ashigarashimo-gun, Kanagawa ■ 20 minutes by bus from Hakone-Yumoto Station (Hakone Tozan Railway) (Courtesy car available from Kowakidani Station - reservation required) ■ <http://www.hakonesuishoen.jp/eng/>



Delicious Traditional Japanese Food

Yams are healthy and delicious and have been loved by the Japanese since ancient times. The sticky texture is the perfect match for white rice! Our set menus include tofu, dried fish and miso, which are the mainstay of the agricultural Japanese diet, and we recommend them for anyone who wants to enjoy genuine Japanese cuisine.

Hakone Jinenjonomori Yamagusuri 箱根 自然薯の森 山薬

☎ 0460-82-1066 **MAP P 22**
 ■ 224 Miyanoshita, Hakone-machi, Ashigarashimo-gun, Kanagawa ■ 7:00 - 21:00 ■ Open 365 days ■ 9 minutes walk from Miyanoshita Station (Hakone Tozan Railway)

Historical Japanese Hotel with Full Service Staff

Mikawaya Ryokan is a traditional Japanese style hotel that has been in operation from 1883 to the present day. Built using construction techniques used during the time of the Samurai, visitors to Japan would be hard pressed to find a more authentic Japanese experience. We are located in Hakone, Japan (2 hours west of Tokyo) seated on a dormant volcano, which supplies our natural hot spring baths found throughout our hotel.

Mikawaya Ryokan 三河屋旅館

☎ 0460-82-2231 **MAP P 22**
 ■ 503 Kowakidani, Hakone-Machi, Ashigarashimo-gun, Kanagawa ■ 20 minutes by bus from Hakone-Yumoto Station (Hakone Tozan Railway) ■ <http://www.hakone-mikawaya.com/language/09en.htm>



1 The main building has distinctive ornamentation, almost like a shrine or castle. 1 night with 2 meals from 20,130yen (Twin room, per person, includes tax and bathing tax). Rooms with open air bathroom, 1 night with 2 meals from 25,962yen (Twin room, per person, includes tax and bathing tax).
2 You can enjoy traditional, seasonal Japanese meals.
3 The traditional "Meiji" bathroom.



Point 4

How to take a hot spring "Onsen" or public bath in Japan

These are places to relax and heal your mind and body, so relax and enjoy your time calmly, rather than playing as you would at a swimming pool.

1 Wash your body before you enter the water.

When bathing Japanese style, without wearing a bath towel, you are supposed to first rinse your body outside the bath tub with a towel. Afterwards, you enter the tub, which is used for soaking only.

2 Don't put your towel in the bath tub.

When you enter the bath tub, do so slowly to avoid causing splashes. In the interests of public hygiene, it is important to follow etiquette and avoid putting your own towel in the water.

3 Wipe your body after leaving the tub, before entering entrance-rooms.

After leaving the tub, the water is usually left for the next person. It is to keep the bath water clean for all persons.

Quick Onsen Facts

- Onsens have quite a dense composition, so if you stay in for a long time you may become dizzy. Take care to hydrate yourself before and after bathing, and only submerge part of your body in the water.
- Some Onsen have components dancing in the water that are mineral deposits. This is not rubbish or trash caught in the water, so please do not worry.

HAKONE KOWAKI-EN YUNESSUN

Hot Spring Amusement Park and Spa Resort

Hakone Kowaki-en YUNESSUN Spa Resort has so many kind of Spas. You can have fun at this all weather facility even on rainy days. So you'll find an array of fun Spas here. And we have many kind of shops and restaurants, so you can enjoy all day.

YUNESSUN [Swim suit Area]



The God's Aegean Sea

Rodeo Mountain

Fool bath of DR.FISH

Wine Spa

Coffee Spa

MORINOYU [Naked Area]



Mio Mall



Shop "Mio Mall" is boosting the wide selection of items. You'll find Hakone souvenirs!

Restaurants



We have many kind of restaurant. Italian, Japanese, and so on. Of course only the restaurant can be used!

Admission Fee (tax included)

[YUNESSUN]	Adult Price ¥2,900	Child Price ¥1,600
[MORINOYU]	Adult Price ¥1,900	Child Price ¥1,200
[Combined]	Adult Price ¥4,100	Child Price ¥2,100
[Mio Mall]	Free of charge Admission fee	

Business hours

[YUNESSUN]	9:00-19:00 [March to October]
[MORINOYU]	9:00-18:00 [November to February]
[Combined]	11:00-21:00 [All season]

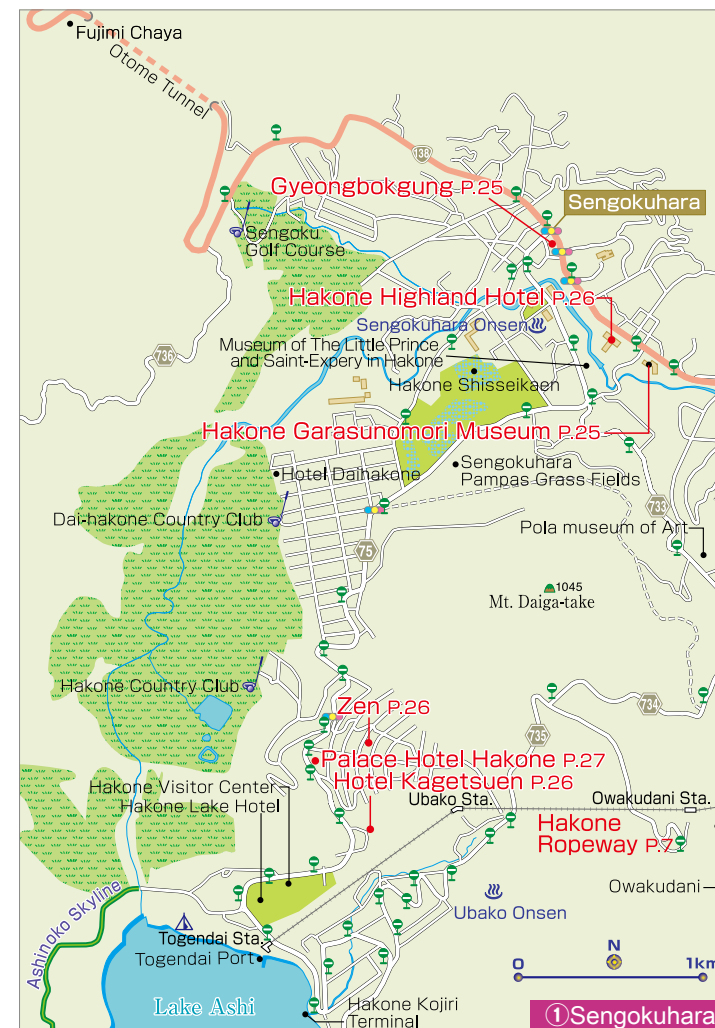
Parking fee ¥1,200/day Senior (60 and over) and disabled is discounts. For more information, please contact us. Child Admission Age starts from 3 years old to elementary school age.

Hakone Kowaki-en YUNESSUN

Tel.0460-82-4126



1297, Ninotaira, Hakone-machi, Ashigarashimo-gun, Kanagawa-Japan 250-0407 <http://www.yunessun.com/>



箱根ホテル小涌園

HAKONE HOTEL KOWAKI-EN

Hakone Hotel Kowakien boasts of a vast expanse of beautiful Japanese garden in front of the lobby. The garden is 16000 square-meter and made in 1914. You can see fireflies dancing from mid-June to mid-July every year, which explains natural environment is preserved for a long time.

Choosing plans

- SUSHI dinner plan ¥20,723~
- TEPPAN-YAKI dinner plan ¥24,241~
- Including YUNESSUN ticket plan ¥22,771~

HAKONE HOTEL KOWAKI-EN
<http://hotel.hakone-kowakien.com/>

1297 Ninotaira, Hakone-machi, Ashigarashimo-gun, Kanagawa, Japan
[Email: info@hakoneho-kowakien.com]

Tel 0460-82-4111



1 Many exhibitions are held, so you will never find yourself tired even of repeated visiting.
2 Our café & restaurant is also attractive, and allows you to enjoy live 'canzone' performances.

To a magical world of glass

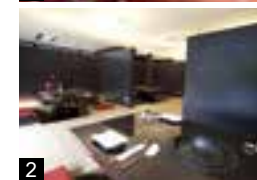
When you walk down a corridor full of lights, sparkling with crystal glass, into the inside of our museum, reminiscent of a medieval noble's house, you will see both a museum of Venetian glass from the 15th-19th centuries, and a museum of modern glass. The trees in the garden decorated with tens of thousands of crystal glass beads will surely fascinate you with their dazzling shine.

Hakone Garasunomori Museum
箱根ガラスの森美術館

☎ 0460-86-3111

MAP P25 ①

■ 940-48 Sengokuhara, Hakone-machi, Ashigarashimo-gun, Kanagawa ■ 9:00-17:30 (last entry: 17:00) ■ Open 365 days ■ 25 minutes by bus from Hakone-Yumoto Station (Hakone Tozan Railway) ■ <http://www.ciao3.com> ■ Entry Fee: Adults: 1,500yen / High School & University Students: 1,100yen / Primary & Junior High School Students: 600yen



1 2 Relax and enjoy your meal in our modern seating, with sunken-style low tables. We also offer a transportation service to and from the station, making it easy for you to visit us.

Popular yakiniku with our inherited secret sauce

Our flavorful Wagyu beef is cooked in a smokeless roaster, and served with our inherited secret sauce. Also our prices are reasonable! You will be glad to know you can have the rice that comes with our lunch sets as much as you like (priced from 880yen). Our special cold noodles are so popular that they have been featured on TV.

Korean Cuisine Yakiniku Gyeongbokgung
韓国料理・焼肉 景福宮

☎ 0460-84-5529

MAP P25 ①

■ 74-1 Sengokuhara, Hakone-machi, Ashigarashimo-gun, Kanagawa
■ Lunch: 12:00-14:00 / Dinner: 17:30-22:00
■ Open 365 days
■ 25 minutes by bus from Hakone-Yumoto Station (Hakone Tozan Railway)



1 A relaxed, refined interior. We have rooms that allow you to enjoy the magnificence of nature, and rooms on the top floor that command a view of Mt. Fuji.
2 Japanese-style creations are served for dinner. The photograph shows an example.

Enjoy a private open air bath

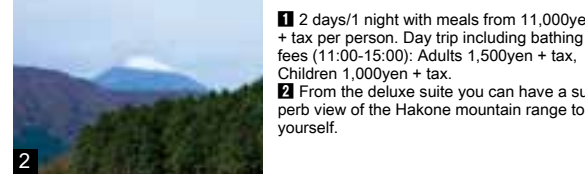
This is a quiet forest inn in Sengokuhara. All 9 rooms have cypress open air baths, allowing you to privately enjoy the active hot spring waters that flow continuously. Please enjoy our Japanese-style creations for dinner, made with fresh coastal fish and fresh local vegetables, as well as 'Fujiyama Wagyu beef'.

Hakone Yuyado Zen 箱根湯宿 然

☎ 0460-84-2400

MAP P25 ①

- 1245-96 Sengokuhara, Hakone-machi, Ashigarashimo-gun, Kanagawa
- 40 minutes by bus from Hakone-Yumoto Station (Hakone Tozan Railway)
- Telephone Reservations: 10:00-20:00



1 2 days/1 night with meals from 11,000yen + tax per person. Day trip including bathing fees (11:00-15:00): Adults 1,500yen + tax, Children 1,000yen + tax.
2 From the deluxe suite you can have a superb view of the Hakone mountain range to yourself.

An inn with a superb view of Mt. Fuji

Our guest rooms have large windows. On the garden side they look out over Mt. Fuji and the Hakone mountain range, and on the mountain side they look out over vibrant green trees. We have two types of hot springs, and there are 4 free baths where you can fully enjoy the cloudy sulfur springs. For dinner, try our Japanese/European dinner tray, as beautiful as it is delicious.

Hotel Kagetsuen ホテル花月園

☎ 0460-84-8621

MAP P25 ①

- 1244-2 Sengokuhara, Hakone-machi, Ashigarashimo-gun, Kanagawa
- 40 minutes by bus from Hakone-Yumoto Station (Hakone Tozan Railway)
- <http://hotel.kagetsuen.net/>



1 A sister property to Palace Hotel Tokyo. Rates start from 9,500yen per person per night, including breakfast.
2 A hotel overlooking the famed Mt. Fuji and Lake Ashi. Its "attention to detail" service attracts many international guests.

A Hotel Overlooking Mt. Fuji and Lake Ashi

At Palace Hotel Hakone, you can enjoy the beauty of Hakone's nature. Our spacious hot springs with large windows lets you spend a relaxing time surrounded by the colors of the four seasons of the Sengokuhara area. Choose from a variety of cuisines at our hotel restaurants, ranging from Japanese, specialty tempura and teppan-yaki, in addition to Western-style cuisine.

Palace Hotel Hakone パレスホテル箱根

☎ 0460-84-8501

MAP P25 ①

- 1245 Sengokuhara, Hakone-machi, Ashigarashimo-gun, Kanagawa
- 40 minutes by bus from Hakone-Yumoto Station (Hakone Tozan Railway)
- <http://hakone.palacehotel.co.jp/>



1 Gaze at the grace of Mt. Fuji and Lake Ashi from the large windows of the guest rooms. The beautiful scenery is like something out of an artist's painting.
2 The building's exterior: 1 night with 2 meals from 20,400yen per person.

A view of Mt. Fuji from every room

'Ryuguden' is a Japanese style hot spring hotel situated on the shores of Lake Ashi. All of its rooms command a magnificent view of Mt. Fuji and Lake Ashi. It has the traditional beauty of Japanese architecture along with hot springs and splendid Japanese-style meals. Our hotel offers a unique luxury that allows you to enjoy Mt. Fuji and the world of Japan to your heart's content.

Ryuguden 龍宮殿

☎ 0460-83-1121

MAP P25 ②

- 139 Moto-hakone, Hakone-machi, Ashigarashimo-gun, Kanagawa
- 65 minutes by bus from Hakone-Yumoto Station (Hakone Tozan Railway)
- <http://www.princehotels.co.jp/ryuguden/>



*Menus will change seasonally. (The photo is for illustrative purposes only.)

Enjoy original French-Japonais at Hakone Highland Hotel.

Hakone Highland Hotel is surrounded by the forest of Sengokuhara, one of the most nature-rich areas in Hakone. Enjoy the main dish of our French-Japonais lunch cooked with wood fire.



Restaurant La Forêt
 ■ Opening hours: 11:30 a.m. - 2:00 p.m.
 Lunch course: From 4,514 yen
 A la carte: From 1,901 yen

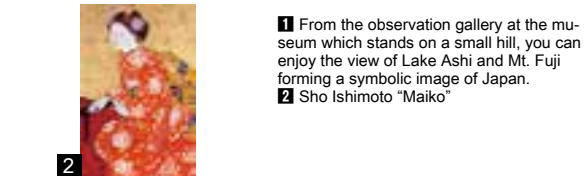


Lounge
 ■ Opening hours: 9:30 a.m. - 9:00 p.m.
 Seasonal dessert: From 594 yen



Sophisticated resort that blends in beautiful nature of highland
Address
 940 Sengokuhara Shinanoki, Hakone-machi, Ashigarashimo-gun, Kanagawa 250-0631
 For inquiries, please call 0460-84-8541 Visit our website. www.odakyu-hotel.co.jp/highland/english/

- From Odawara Station or Hakone-Yumoto Station, take the Hakone Tozan Bus bound for Togendai, and get off at Shinanoki/Hakone Highland Hotel
- From Gora Station, take the sightseeing spot tour bus bound for Shissai Kaen or Sengoku Information, and get off at Shinanoki/Hakone Highland Hotel
- From Shinjuku Station West Entrance, take the Odakyu Hakone Highway Bus and get off at Hakone Highland Hotel
- From Gotemba IC of Tomei expressway, about 20 minutes by car



1 From the observation gallery at the museum which stands on a small hill, you can enjoy the view of Lake Ashi and Mt. Fuji forming a symbolic image of Japan.
2 Sho Ishimoto "Maiko"

Japanese Painting Museum with a Magnificent View

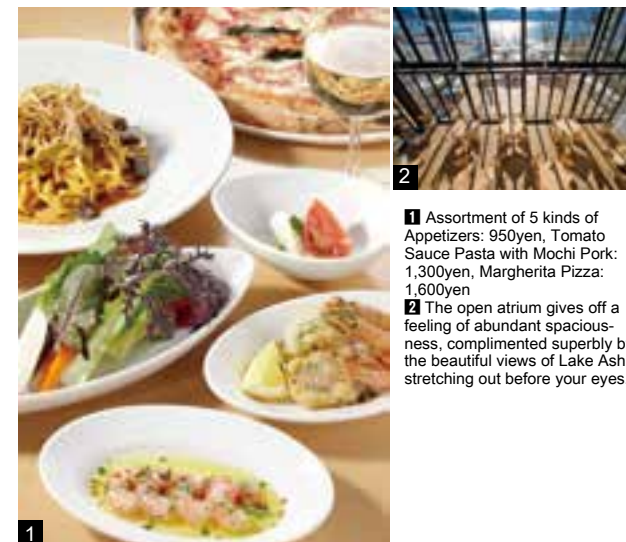
The museum overlooks Lake Ashinoko, and on a clear day you can see Mt. Fuji. There are art exhibitions showcasing various themes centering on Japanese Paintings which were selected from the approx. 4,000 pieces in our collection, ranging from works by great masters to fresh young talent. Enjoy tea served in artistic ceramics at the tea lounge. Hot sandwiches and pizza are also available.

Hakone Ashinoko Narukawa Art Museum 箱根・芦ノ湖 成川美術館

☎ 0460-83-6828

MAP P25 ②

- 570 Moto-hakone, Hakone-machi, Ashigarashimo-gun, Kanagawa
- 9:00-17:00 (Last entry 16:45) ■ Open 365 days ■ Entry Fee: Adults: 1,200yen / High School & University Students: 900yen / Primary & Junior High School Students: 600yen ■ 40 minutes by bus from Hakone-Yumoto Station on the Hakone Tozan Railway ■ <http://www.narukawamuseum.co.jp>



1 Assortment of 5 kinds of Appetizers: 950yen, Tomato Sauce Pasta with Mochi Pork: 1,300yen, Margherita Pizza: 1,600yen
2 The open atrium gives off a feeling of abundant spaciousness, complimented superbly by the beautiful views of Lake Ashi stretching out before your eyes.

Italian Cuisine on the Lakeside

With 30 varieties of pizza baked in a large Italian pizza oven, we offer you a genuine Italian flavor! You can enjoy delicious Italian food with cheeses and wines imported from Italy. Next door is a museum, a specialty shop, and a book store selling water color paintings painted by Mr. Toyoo Tamamura.

Ashinoko Terrace Italian Restaurant La Terraza 芦ノ湖テラス イタリアンレストラン ラ・テラツァ

☎ 0460-83-1074

MAP P25 ②

- 61 Moto-hakone, Hakone-machi, Ashigarashimo-gun, Kanagawa
- 8:00-20:00(L.O.19:30) ■ Open 365 days (May be closed on unspecified days in February and September) ■ 40 minutes by bus from Hakone Yumoto Station on Hakone Tozan Railway ■ <http://www.la-terrazza-ashinoko.co.jp>



*Menus will change seasonally. (The photo is for illustrative purposes only.)

Enjoy gourmet dining at Hôtel de Yama

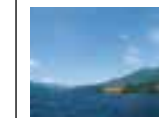
Hôtel de Yama by Lake Ashinoko in Hakone is a resort with a history of over 60 years. Enjoy either French or Japanese haute cuisine amidst beautiful scenery.



French Restaurant Vert Bois
 ■ Opening hours: 11:30 a.m. - 2:00 p.m.
 Lunch course: From 4,158 yen



Japanese Restaurant Tsutsuji-no-Chaya
 ■ Opening hours: 11:30 a.m. - 2:00 p.m.
 Lunch course: From 3,326 yen



Lakeside hotel with a spectacular view of Lake Ashinoko [Closed 6 Jan., 2015~20 Apr., 2015]
Address
 80 Moto-Hakone, Hakone-machi, Ashigarashimo-gun, Kanagawa 250-0522
 For inquiries, please call 0460-83-6321 Visit our website. www.odakyu-hotel.co.jp/yama-hotel/english/

- From Odawara Station or Hakone-Yumoto Station, take the Hakone Tozan Bus bound for Hakone-machi or Moto-Hakone Port. Get off at Moto-Hakone Port and take the complimentary shuttle bus.
- From Shinjuku Station West Entrance, take the Odakyu Hakone Highway Bus and get off at the last stop Hakone Odakyu Hôtel de Yama.
- From Odawara-Atsugi Road, get off the Hakone Shindo at Ashinokodaikan IC, and the hotel is about ten minutes from there.

The locations with a view of Mt. Fuji

You can enjoy the magnificent view of Mt. Fuji from near Sengokuhara or Moto-hakone.



from Mt.Kintoki



from Owakudani



from Lake Ashi



C



from Mt. Taikan

D

Bakery & Table HAKONE

Enjoy Lake Ashinoko's amazing view from the 3rd floor restaurant. You can enjoy hot sandwiches and sweets prepared right before your eyes in our open kitchen. We have a diverse menu and sure you will find something that fits you. We also have an English menu so no worries of not being able to read Japanese. Our staff is friendly and well trained willing to help with any of your needs.

The 2nd floor is where you will find our Cafe. Here, you can enjoy a wide variety of coffee, all while you enjoy freshly baked bread, purchased from the 1st floor.

The 1st floor bakery has an enormous variety of freshly baked breads prepared by a dedicated team of bakers working around the clock to ensure the freshest and highest of quality. You can also watch them bake from the 1st terrace where there is a large window which allows you to peek inside of the kitchen.

Pets are also allowed at the terrace section. There is also a hot spring foot bath available in the front side by lake. Here, you can enjoy freshly baked breads purchased from the bakery, and drinks purchased from the outside parlor. We hope to see you soon!



Menu	
• Galette "Roast Beef and Salad"	2,280yen
• Domestic pork Po-au-feu, vegetables and Sausage Stew	1,980yen
• Crepe "Orange and Grand Marnier Sauce"	1,280yen

TEL 0460-85-1530 www.bthjapan.com
 9-1, Motohakone, Hakone-machi Ashigarashimo-gun, Kanagawa, 250-0522, Japan
 • Bakery 10:00-17:00 • Parlor 10:00-17:00 • Cafe 8:30-17:00 (L.O 16:30)
 • Restaurant 11:30-20:30 (L.O 19:30) Monday & Thursday ...11:30-18:00 (L.O 17:00)

MISMO HAKONE ENGLISH vol.1

Staff

Publisher
Kazuhiro Nakamura

Editor in Chief
Yoshiko Maki

Deputy Editor in Chief
Koichiro Uramoto

Sales&Promotion Staff
Jun Saito

Editor
Kayoko Aihara
Hiroko Matsubayashi

Designer
Yukako Miyazawa
Daisuke Hisano
Yohei Iijima
Chieko Horiko
NIPPON PRICOM,inc.

Photographer
Junichi Ihara
Megumi Sakurai

Map Design
Shigeko Kobayashi

DTP Staff
Junna Shirasawa
Satomi Kamiya

Special Thanks
Akiko Gunji
Mika Tsunoda
Satoko Matsuoka
Miyu Yoshizawa
NIPPON PRICOM,inc.

Cooperation 協力

Odakyu Electric Railway Co., Ltd.
小田急電鉄株式会社

Odakyu Hakone Group
小田急箱根グループ

HAKONE TOWN
箱根町

HAKONE Convention Bureau
箱根コンベンションビューロー

Hakone Town Tourist Association
一般財団法人箱根町観光協会

Odawara City
小田原市

Issue 発行
iNCLUBE Co., Ltd.
株式会社イングループ

<http://www.mismonet.com>

本誌の広告に関するお問い合わせは
株式会社イングループ
〒215-0021
神奈川県川崎市麻生区上麻生1-5-1
リソナ新百合ヶ丘ビル5F
営業企画部 ☎044-959-3750

Printing and bookbinding 印刷・製本
SANKEI SOGO PRINTING Corporation
サンケイ総合印刷株式会社

次号は2015年5月発行予定です。



A resort hotel by Lake Ashi,
with views of the peak of Mt.Fuji.



■ 65 Hakone, Hakone-machi, Ashigarashimo-gun, Kanagawa, 250-0521, JAPAN
 ■ Tel: +81-460-83-6311 ■ <http://www.hakonehotel.jp/en/>



Minamiashigara-shi

Kanagawa Pref.

Odawara-shi

Shizuoka Pref.

Hakone-machi

Yugawara-machi

Manazuru-machi

Mishima-shi

Atami-shi

Shimizu-cho

Kannami-cho

HAKONE MAP



HAKONE GINYU

時間を忘れて、
旅を愉しむ。

*The guest feel 5 senses in scenery and find so many impression,
This is our Ryokan concept.*



TEL. 0460-82-3355