

JAPAN

HAKONE

 Japan.
Endless
Discovery.

2016
Winter/
Spring

vol.3

FREE

English
英語版

箱根

HAKONE/ODAWARA VISITOR'S GUIDE

Detailed
MAP
Included



Mt. Fuji and Lake Ashi

Mいi＊s＊u＊m＊◎
【ミスモ＊はこね】

Annex Suite,
where history comes alive in the Kan' in-no-miya Imperial Villa

Annex Suite "Kakou"
Open-Air Big Stone Bath in the Garden



Annex Suite "Zangetsu"
Open-Air Bath



The pool with an outdoor Jacuzzi

- » Annex Suite "Kakou" 2guests occupancy 90,000yen
- » Annex Suite "Zangetsu" 2guests occupancy 80,000yen

Room charge half board (dinner & breakfast) per person, per night.
All prices excluding tax/including service charge.



ALL AROUND THE WORLD, UNIQUE IN THE WORLD Our 500 restaurants & hotels offer the finest experiences all over the world.

Hotel

GÔRA KADAN

Tel. +81 (0)460-82-3331

✉ reservation@gorakadan.com

Restaurant

Kaiseki KADAN 後園花壇

located inside the luxurious inn GÔRA KADAN

Restaurant of the Kaiseki cuisine

Tel. +81 (0)460-82-3333

✉ kadan@gorakadan.com



Contents

- 5 Getting to Hakone
- 6 Let's Enjoy Hakone's Various Rides!
- 8 Transportation Hakone Freepass,
Tickets information
- 10 Events of the Year in Hakone
- 12 Must See in Hakone
- 14 Gourmet Foods & Good Goods
- 16 Odawara
- 18 Hakone-Yumoto
- 21 Miyanoshita, Kowakidani, Gora
- 24 Breathtaking Views of Mt. Fuji
- 26 Sengokuhara, Gotemba, Lake Ashi
- 29 Onsen Short List
- 30 Hakone / Odawara Map

【Culture and Etiquette】

- 4 Simple Japanese
- 9 Shrine and Temple Etiquette
- 17 Japanese Customs for Rooms and Meals
- 20 History of Hakones, Odawara
- 23 Pointers on Bathing Etiquette



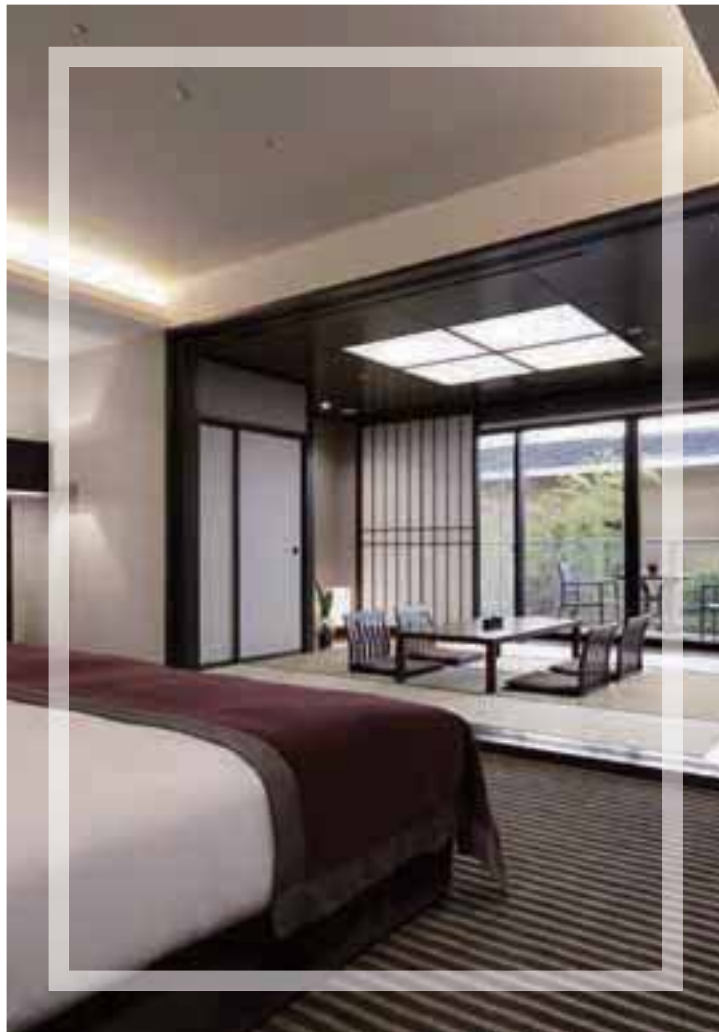
Hakone, known for its natural beauty that changes expressions with the seasons, is full of charms -- hot springs, museums and art galleries, historical buildings, leisure facilities, fantastic food and glorious view of Mt. Fuji, the world's cultural heritage site.

Please visit Hakone that made tourists of the world a captive, and make lots of memories there.

Information published in this magazine is as of November 2015. There may be cases of prices having been changed since then, so please check with the stores before use. And there are instances of consumption tax or bathing tax, other service fees applied separately. The overnight stay prices are a single person charge on weekday (Monday to Thursday and Sunday, excluding the day before a holiday) overnight stay with two meals, for a room by two persons unless otherwise stated. ※ The details of what have been referred in this magazine could be changed or discontinued due to weather or other reasons. Please check with the organizer/facility/store before heading out.

Please note that the opening/business hours, charges, closed days, event opening periods and menu contents of facilities and stores published in this magazine are subject to change without notice.

Unauthorized reproduction/copying of photographs, illustrations, maps or articles in this magazine are strictly forbidden.



Your home away from home, Hyatt Regency Hakone

Pristine mountain forests. World-famous hot springs.
Get away from it all. Relax in luxurious comfort
combined with classic Japanese style and hospitality.

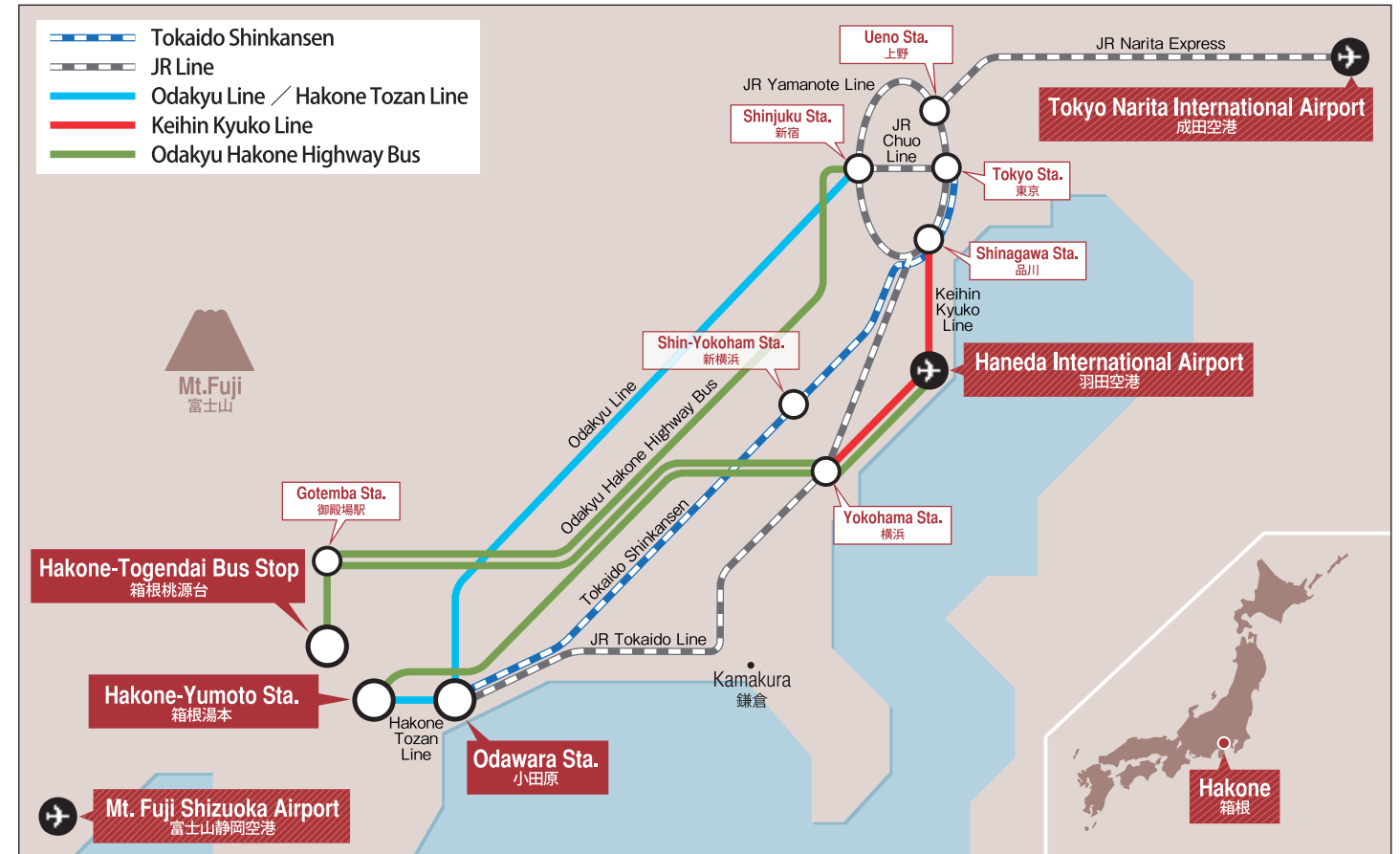


**HYATT REGENCY HAKONE
RESORT AND SPA**
1320 Gora, Hakone-Machi
Ashigarashimogun, Kanagawa
250-0408

Tel. 0460-82-2000
hakone.regency.hyatt.com

HYATT name, design and related marks are trademarks of Hyatt Corporation. ©2015 Hyatt Corporation. All rights reserved.

Getting to Hakone



Point 1

Simple Japanese

If you can learn some simple Japanese, it will be useful when trying to communicate.

Greeting and Daily Conversation

Yes / No	hai / iie
Good Morning	ohayo gozaimasu
Hello	konnichiwa
Good evening	konbanwa
Goodbye	sayonara
Thank you	arigato gozaimasu
Excuse me	sumimasen
I'm sorry	gomennasai
It's delicious	oishi

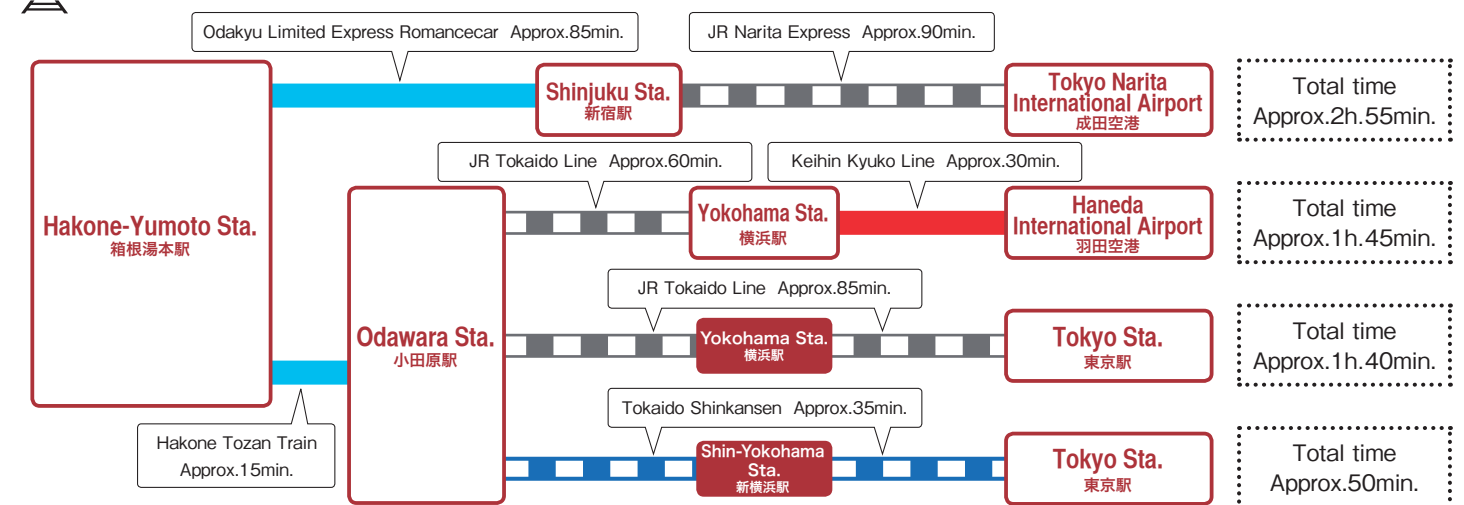
Shopping and Eating

How much is it?	Ikura desu ka?
What do you recommend?	Osusume wa nan desu ka?
What is this?	Kore wa nan desu ka?
Do you have ○○?	○○ wa arimasu ka?
I'll have this, please.	Kore o kudasai
Can I pay using my creditcard?	Kurejitto Kādo de shiharai dekimasu ka?

Sightseeing

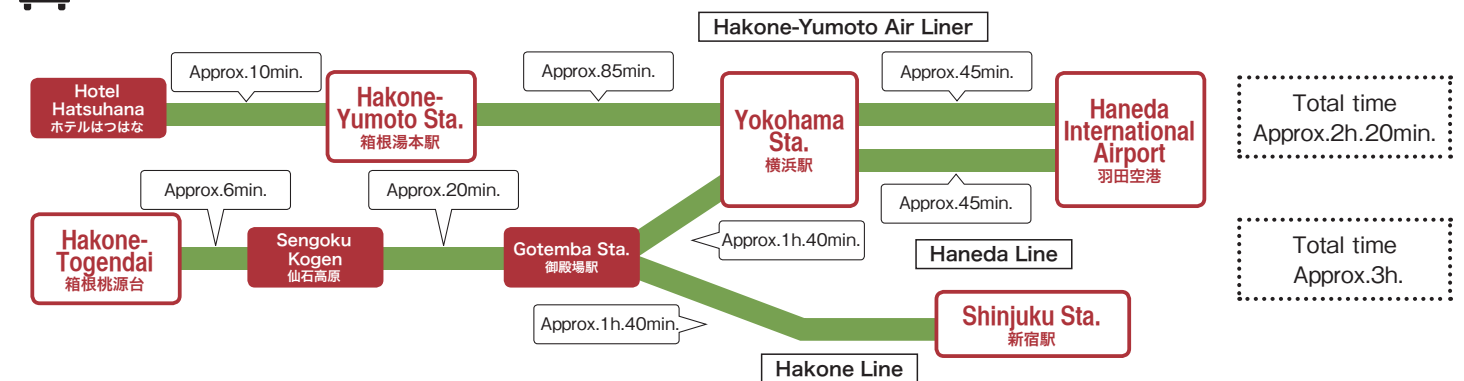
Where is the ○○?	○○ wa doko desu ka?	How long will it take?	Jikan wa dore gurai kakarimasu ka?
I want to go to ○○.	○○ ni ikitai desu	Could you please take my/our picture.	Shashin o totte kudasai
Toilet	toire	Can you speak English?	Eigo wa hanasemasu ka?
Station	eki	I lost my ○○.	○○ o nakushimashita
Bus Stop	basunoriba		
Tourist office	kanko annaijo		
Hospital	byouin		

Train



Bus

Odakyu Hakone Highway Bus



*It is an example. Estimated time is subject to change depending on operation and road condition.

Let's Enjoy Hakone's Various Rides!



Hakone Tozan Cable Car

Travels at approximately 12 kph to connect Gora and Sounzan stations in 10 minutes.

Hakone Tozan Railway

Travel from Odawara to Gora stations while enjoying surrounding wilderness and breathtaking views from railroad bridges. Also check out Allegra, the new railcar model.

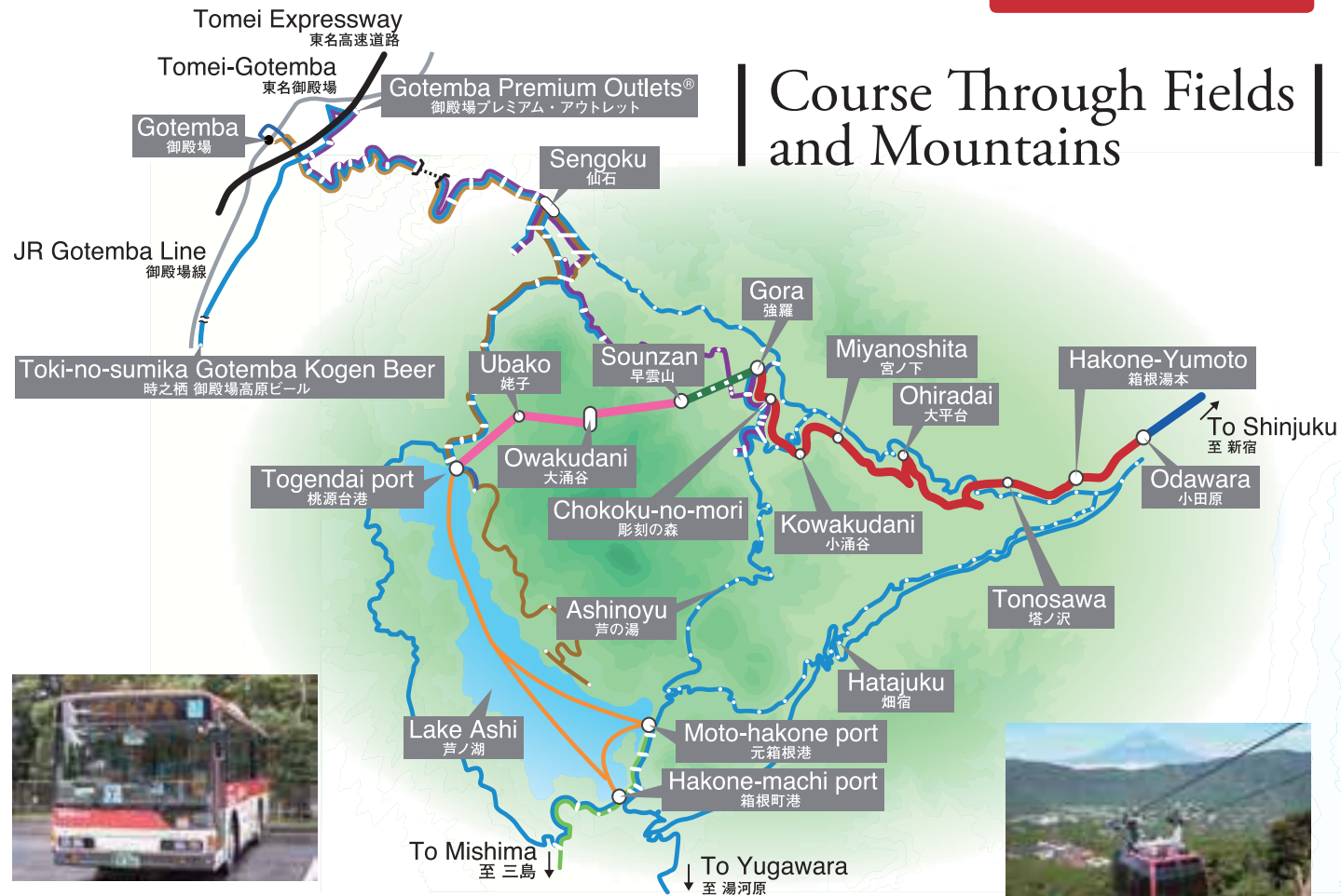


● Steepest pitch in Japan

Between Hakone-Yumoto and Kowakidani stations is an 80/1000 gradient, the steepest in Japan for an adhesion railway.

● Switchback

The railcar climbs the steep incline in a switchback zig-zag, changing directions back and forth.



Hakone Tozan Bus

Many buses operate, offering easy connections as it crisscrosses Hakone's fascinating mountain roads.

Odakyu Hakone Highway Bus

Offers direct transit from Shinjuku, Haneda Airport and Yokohama to Hakone and Gotemba.



"KANKO SHISETSU-MEGURI" Bus

(Tourist Attraction Sightseeing Bus/Hakone Tozan Bus)

This comfy way to go sports a fancy, retro-looking design as it circles tour locations like museums, with skylight windows for breathtaking views of sky and trees.



Hakone Ropeway

Enjoy the views during a 30-minute ride across four kilometers between Sounzan and Togendai stations, including the amazing Owakudani volcanic valley, Lake Ashi, and magnificent Mt. Fuji.

As of November 2015, a portion of the Hakone Ropeway is closed. Please refer to "Hakone navi" for details on the service status of substitute buses and other means of transport.

- Hakone Tozan Railway
- Hakone Tozan Bus
- "KANKO SHISETSU-MEGURI" Bus
- Hakone Tozan Cable Car
- Hakone Ropeway
- Hakone Sightseeing Cruise
- Odakyu Hakone Highway Bus

Recommendation

See page 8 for information on great savings with your Hakone Freepass.

Enjoy Lake Ashi Cruis

Hakone Lake Hotel

We are proud of "Mayu-no-mori" hot spring

Only 3 minutes walk from Togendai Station



Jan. 23rd 2016 OPEN!

Café & Souvenir HOTORIYA

Hakone-machi.port



Three Fine Ships

Three different sightseeing ships—the red Royal II, the chic Victory, and the Vasa with its elegant sculptures—Take you to the fascinating cruise on Lake Ashi.



Victory



Vasa



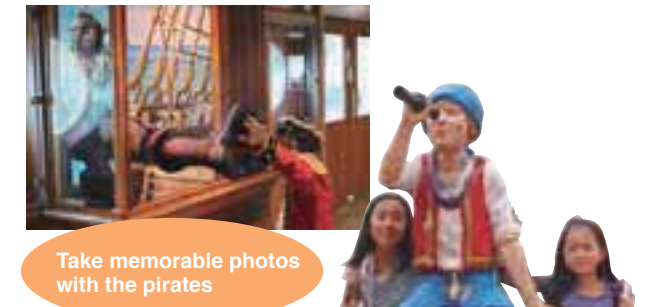
Royal II

Hakone Sightseeing Cruise (Hakone Pirate Ship)

☎ 0460-83-7722

www.hakone-kankosen.co.jp/foreign/en/

operates between Hakone-machi, Moto-Hakone and Togendai on Lake Ashi. Enjoy the excellent hakone skyline and a panoramic view of Mt. Fuji.



Take memorable photos with the pirates

① Rides and Nature Course

Hakone-Yumoto Sta. → Hakone Tozan Railway → Gora Sta. → Hakone Tozan Cable Car → Koen-shimo Sta. → Walk → Hakone Gora Park → Walk → Koen-kami Sta. → Hakone Tozan Cable Car → Sounzan Sta. → Hakone Ropeway → Owakudani → Hakone Ropeway → Togendai Port → Hakone Sightseeing Cruise → Moto-hakone Port → Walk → Hakone Shrine → Walk → Moto-hakone Port → Hakone Sightseeing Cruise → Hakone-machi Port → Walk → Hakone Sekisho → Hakone Tozan Bus → Hakone-Yumoto Sta.

As of November 2015, a portion of the Hakone Ropeway is closed. Please refer to "Hakone navi" for details on the service status of substitute buses and other means of transport.

② Hakone Old Tokaido Road Course

Hakone-Yumoto Sta. → Hakone Tozan Bus → Ichirizuka (Hatajuku) → Walk → Amazake Chaya → Walk → Stone-Paved Road → Walk → Cedar Avenue → Moto-hakone Port → Hakone Tozan Bus → Hakone-Yumoto Sta.

③ Sightseeing Course

Hakone-Yumoto Sta. → Hakone Tozan Railway → Kowakidani Sta. → Walk → Chisuji Falls → Walk → Kowaki-en → "KANKO SHISETSU-MEGURI" Bus → Hakone Garasunomori Museum (Venetian Glass Museum) → "KANKO SHISETSU-MEGURI" Bus → Gotemba Premium Outlets → "KANKO SHISETSU-MEGURI" Bus → Kowaki-en → Hakone Tozan Bus → Hakone-Yumoto Sta.



A convenient and economical excursion ticket Hakone Freepass

Enjoy the beauty of Hakone, surrounded by nature.

You can freely board eight different types of transportation in Hakone



All of the transport in the Hakone area which have this mark can be freely boarded.

For more information, refer to the brochure "箱根 HAKONE" available at all stations on the Odakyu line.

<8 different types of transportation>

- 1 Hakone Tozan Line
- 2 Hakone Tozan Cable Car
- 3 Hakone Ropeway
- 4 Hakone Sightseeing Cruise
- 5 Hakone Tozan Bus (in designated zones)
- 6 "KANKO SHISETSU-MEGURI" Bus (Tourist Attraction Sightseeing Bus/Hakone Tozan Bus)
- 7 Odakyu Hakone Highway Bus (in designated zones)
- 8 Numazu Tozan Tokai Bus (in designated zones)

<Sample fares>

	2 days	Adult	Child
From Shinjuku		5,140 yen	1,500 yen
From Odawara Gotemba		4,000 yen	1,000 yen

* Fares may vary depending on the starting station and length of validity. * 3 days ticket also available



<Examples of trips in Hakone using the Freepass>



* An additional limited express surcharge is required to ride the Romancecar.

Take the quick, comfortable Romancecar to Hakone! (Reservation required)



Passengers with a Freepass from Shinjuku to Hakone can board the Romancecar (reservations required) if they purchase the special express ticket (890yen).

<Romancecar limited Express surcharge & Normal fare>

limited Express Surcharge	Odawara	Hakone Yumoto	Normal fare	Odawara	Hakone Yumoto
From Shinjuku	890 yen	890 yen	From Shinjuku	880 yen	1,190 yen

Shinjuku to Hakone-Yumoto: approx. 85 min * Normal express train: approx. 115 min.

* With Hakone Freepass from Odawara and travel between Shinjuku and Hakone-Yumoto, by Romancecar, normal fare and limited express surcharge are required. Please contact staff for more information.

Places where the Freepass is available

1 Any Odakyu Line station

2 Odakyu Sightseeing Service Center, Shinjuku [Business hours 8:00-18:00]

Odakyu Sightseeing Service Center is special service counter for foreign tourists. English speaking staff are always available (on certain shifts Chinese speaking and Korean speaking staff are also available). They offer information about sightseeing along the Odakyu line in places like Hakone and Enoshima, as well as sales of tickets and Freepasses.

TEL:03-5321-7887
FAX:03-5321-7886

E-mail:welcom@odakyu-dentetsu.co.jp
WEB:www.odakyu.co.jp/english



Odakyu Sightseeing Service Center (Shinjuku)

There is also an Odakyu Sightseeing Service Center in Odawara.
Business hours 9:30-17:30
TEL:0465-24-4101

Point 2

Shrine and Temple Etiquette

Shrines are dedicated to Shinto gods, and temples to Buddhist figures such as bodhisattvas and various incarnations of Gautama. In both of these sacred places you should move and act calmly and speak quietly.



1 Bow slightly before entering a shrine's torii or a temple gate

The ground and space beyond a shrine's torii or a temple gate are considered sacred. Bow slightly before passing through torii or temple gate. As the center of the shrine walkway is the path of a sacred being, visitors should walk slightly to the right or left.



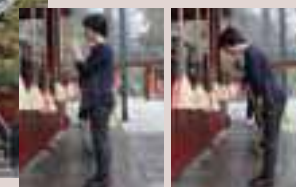
2 Rinse hands and mouth at the chozuya (ritual ablution pavilion)

After passing through shrine or temple entry, you'll find a small pavilion for rinsing hands and/or mouth before you step up to the sacred space occupied by shrine god or Buddhist deity.

Perform the ablution in five simple steps: ① with your right hand, dip the ladle into water and rinse your left hand; ② switch hands and rinse your right hand; ③ take the ladle with your right hand and pour some water into your left palm, and raise that cupped water to your mouth and rinse (taking care that your mouth does not directly contact any part of the ladle); ④ pour water onto your left hand to cleanse it; ⑤ raise the ladle cup straight up, perpendicular to the ground, to let the remaining water pour down the handle and clean it, and then return the ladle to its original spot on the fountain, face down.

3 Offering Ritual: Ring bell and toss money into offering chest

These days coins or bills are used as an offering to deities. In the past, these were made in the form of rice. There is no set amount to offer, so you should decided how much to give according to your wish or prayer, purification ritual, gratitude, or other matter. Temples usually don't have a rope pull, but if there is one, do as in a shrine; if none, make your silent pronouncement and toss gently into the slatted grate atop the offering chest.



4 Shrine Salutation: Bow twice, clap twice, and bow once to greet the deity

Bow deeply before a shrine's outer sanctuary and then make two bows, each at a 90-degree angle. Raise hands to chest center, Western-prayer style, and clap twice at a shrine but not a temple. Return hands to chest center and pray. Lower hands to sides and bow once, at a 90-degree angle. Bow again, deeply, and step back.

5 Shrine and Temple Option: amulet or paper votive

After making an offering, many visitors stop by a building where votives and amulets are sold. They also often draw paper fortunes. An amulet is worn to receive the deity's blessing; a paper votive is read to learn one's fortune. You also have the choice, according to custom, to tie the paper votive on a branch of a tree—on temple or shrine grounds—or you can take it home.



Distinguishing points of a temple

- Temples usually do not have torii but a formal structure of wood, often two stories high, as their gate. Bow slightly before passing through the overhead structure.
- When making offerings or praying at a temple, do not clap the hands. Bow deeply and then bring hands together, chest center (Western-prayer style), as you make your pronouncement.

(with thanks to Hakone Shrine)

Cherry blossoms in Miyagino at Hayakawa riverside
宮城野の早川堤の桜



春
spring

March

- mid Mountain Burning of Sengokuhara Pampas Grass Fields (Sengokuhara)
- 27 Sengokuhara Yudate Shishimai (Hot Water Lion Dance Ritual)



Azalea at Horaïen
蓬菜園のツツジ



Mountain Burning of Sengokuhara Pampas Grass Fields
すすき草原山焼き



Sengokuhara Yudate Shishimai
仙石原湯立獅子舞

July

- 15 Miyagino Yudate Shishimai (Hot Water Lion Dance Ritual) (Miyagino /Suwa Shrine)
- 31 Lake Ashi Festival (Moto-hakone/ Lake Ashi)

夏
summer

August

- 4 Kojiri Ryujin Festival (Kojiri/ Lake Ashi)
- 5 Torii Burning Festival (Moto-hakone/ Lake Ashi)
- 16 Hakone Daimonji-yaki bonfire (Gora/Miyagino)

Hiryu Falls
飛龍の滝



Chisuji falls
千条の滝

Lake Ashi Festival
湖水まつり



Hydrangea of Amidaji Temple
阿弥陀寺のアジサイ

Events of the year in Hakone

秋
autumn

Sengokuhara Pampas Grass Fields
仙石原のススキ草原



October

- mid Ashikari Festival (Ashi-no-yu)
- 24 Motomiya Yearly Festival (Summit of Komagatake)

November

- 3 Hakone Daimyo Procession (Hakone-Yumoto)

Hakone Daimyo Procession
箱根大名行列



Autumn leaves of Lake Ashi
芦ノ湖の紅葉



January

- 2,3 Tokyo-Hakone Collegiate Ekiden Relay Race
- 5 Lake Ashi Kosuibiraki (Moto-hakone/ Lake Ashi)

February

- 3 Setsubun Festival (Hakone Shrine)

冬
winter



View of Lake Ashi and Mt. Fuji from Onshi-Hakone Park
箱根恩賜公園からの芦ノ湖と富士山

Must See in Hakone

Sengokuhara
仙石原



Sengokuhara Pampas Grass Fields
仙石原ススキ草原

Experience the sensual feel of pampas grass fields at the foot of Mt. Daigatake, renowned for showing Hakone autumn at its best. These golden fields, swaying as one in the fall breeze, are wonderful to see and touch.



Owakudani 大涌谷

Created roughly three millennia ago by steam explosions, "Great Boiling Valley" is an active volcanic zone sourcing Hakone hot springs and a hot tourist spot for Mt. Fuji views. Feel the volcanic power amid natural beauty.

* As of November 2015, due to the active volcano, the Owakudani Park is still off limits.

Moto-Hakone, Hakone-Machi
元箱根・箱根町

Hakone Sekisho(Check-point)
箱根関所

Feel the past come alive at this historic checkpoint for foot and vehicle traffic along the Tokaido Road, linking Edo (now Tokyo) and Kyoto in the Edo period. Inspection and tax collection were held in the Edo-style building.



Cedar Avenue
杉並木

Along the historic Tokaido Road stands an avenue of cedars planted to give shade to travelers. Within this unique community are elders over 350 years old you must meet in their cool shadows.

Miyanoshita, Gora
宮ノ下・強羅



Hakone Gora Park
箱根強羅公園

Stroll around this French-styled park, opened in 1914, and get a clear sense of the design in bilateral symmetry around a fountain. Delights of the four seasons include a teahouse, ceramics, and flowers.



Chisuji falls
千条の滝

Note how this waterfall, three meters high and 25 meters wide, flows quietly and hangs like a reed screen over moss-covered rocks in the upper reaches of Jakotsu River. Enjoy seasonal changes like summer's glowing fireflies and autumn's fiery leaves.

Odawara
小田原



Odawara Castle
小田原城

No trip to Odawara will be complete without visiting this castle built by Omori Yoriharu, regional lord of Nishi-sagami during the Muromachi period (1337-1573). The Hojo Clan, entombed at Soun-ji, succeeded him in ruling from this historic fortress, said to have been the largest in Japan during the Warring States period.

* For an earthquake-resistant repair work and an exhibition renewal, Odawara Castle closes. A period Until the end of April, 2016.



Odawara Fishing port
小田原漁港

In addition to offering soothing sounds of harbor waters, this port serves up a rich sea harvest including horse mackerel and sardine. And being seaside, naturally the harbor has plenty of places to dine on the freshest seafood, possibly lunching on a catch hauled from the ocean by fishermen at dawn.

Hakone-Yumoto
箱根湯本



Soun-ji Temple 早雲寺

Construction of this historic temple was overseen by Hojo Soun, a military commander from the Warring States period (1467-1603). The grounds are done with exemplary taste, containing a traditional stone garden in the dry landscape style as well as a tomb equal to the enduring legacy of five generations of the Hojo Clan.



Yumoto-Kenban 湯本見番

Though it may be hard to believe geisha are not born but made, the daily training here of Yumoto geisha includes dancing, singing, reciting poetry, gracefully pouring drinks without spilling a drop, and more. In addition, seasonal events are held to demonstrate their accomplishments.



Hakone-Yumoto
箱根湯本

Arguably the most vibrant and lively hot spring district in all Hakone, Yumoto will soon convince you of its superior features, like hot springs for day trips, firmly established inns offering traditional hospitality, and streets around the station chock-a-block with restaurants and souvenirs shops.

Hakone Old Tokaido Road
箱根旧街道



Amazake Chaya 甘酒茶屋

Historic teahouse open for business early in the Edo period sits perched on the Hakone stretch of the Tokaido Road, a portion legendary for being the most perilous on the old highway. Don't miss the tangy taste of sweet sake, yet another minor legend dating back to the start of the teahouse as well as naming it.



Ishidatami
石畳

This stone-paved road was built at the beginning of the Edo period to make travel smooth and easy for royals as well as commoners. Present-day travelers can sense the passage of time as they look out on scenery as beautiful and captivating as it was for Edo pilgrims, priest, poets and others.

Hakone Stone Buddhas
箱根石仏群



Surrounding Shojin Pond is a stately gathering of Buddha sculptures and stone monuments going back seven centuries. Among these sacred figures sits the contemplative Rokudo-jizo, carved out of rock and said to be Kanto's largest Buddha figure.

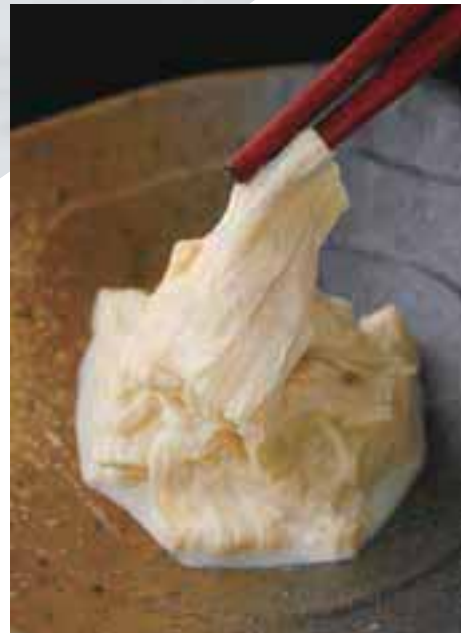




Yuba & Tofu

湯葉&豆腐

Tofu comes from coagulating soy milk (pressed from beans) with bittern into small blocks, and *yuba* from skimming off the top layer of heated soymilk. Hakone tofu and yuba, made with delicious local water, are known for "sweet" flavor and aroma.



Odawara Chochin (Odawara lantern)

小田原ちょうちん

These paper lanterns are made by attaching paper to a frame of thin bamboo sticks and are lit by a candle within. Odawara *chochin*, said to have been created during the Edo period for travelers crossing the Hakone mountains, can be neatly folded and put away. What's more, they're resistant to rain and fog. Being partially made from sacred trees, they were also used as a talisman against evil.



Yosegi-Zaiku (marquetry goods)

寄木細工

Hakone Yosegi-Zaiku come from combining various kinds of wood to create geometric shapes utilizing wood hues and grains. These are then planed down and affixed to small boxes and other items. This craft dates back to the late Edo period and a wide range of goods, including boxes and coasters, are still made today as traditional Hakone craftwork.



Onsen Manju (hot spring steamed bun)

温泉まんじゅう

This famous hot spring steamed bun is named for hot spring water used in the dough and for being steamed in hot spring vapors. They're sold not only in boxes to take home as gifts but also sold individually in stores, so be sure to try a freshly steamed bun when you visit.

What to choose from the fine assortment of Hakone gourmet foods and traditional goods? A difficult decision, but don't miss out on black eggs (unique to hot springs), tasty buckwheat noodles, elegant marquetry, and so much more!

Hakone & Odawara Gourmet Foods & Good Goods



Soba (buckwheat noodles)

そば

This traditional Japanese food goes back some 300 years and is made from ground buckwheat grain seeds. The deciding factor is water when making the noodles, which then offer a rich aroma and enjoyable texture. Good-quality water gushes in Hakone, so the taste of soba made here is specially delicious and popular.

Umeboshi (pickled plums)

梅干し

Japanese plums or *ume* are pickled in salt and dried in sunlight. The resulting *umeboshi* have been used as highly portable food by itinerant travelers passing through Hakone since the reign of the Odawara Hojo Clan and were highly valued in the Edo period by samurai accompanying *daimyo*. Unique Odawara varieties include *shisomaki umeboshi* (pickled ume wrapped in perilla leaf).



Kamaboko (fish cake)

かまぼこ

These fish cakes made from kneading then steaming minced white fish are known for their characteristic elastic texture and rich flavor. Transportation was inconvenient in the Edo period, so Odawara *kamaboko*—as preserved food made from fish caught fresh here—was served at local inns in Hakone. News of its delicious flavor soon spread nationwide.



Seafood Cuisine

海鮮料理

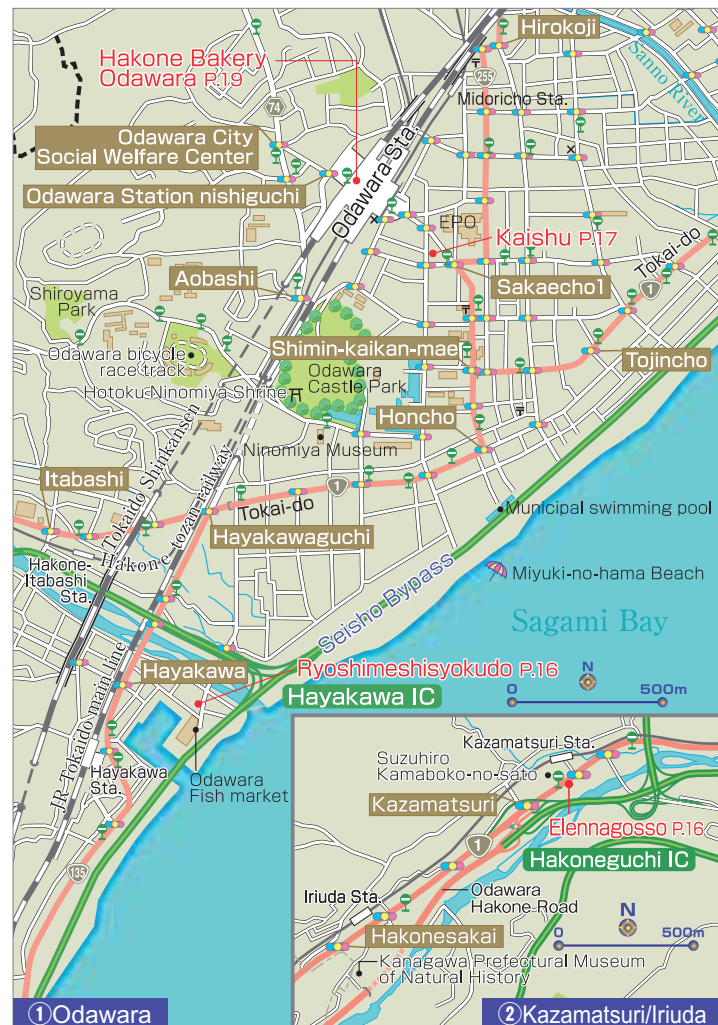
Hakone and Odawara, located between Sagami Bay and Suruga Bay, provide an abundant harvest of seafood, which means there's a wide variety of fresh fish, including sushi. Odawara has its own fishable harbor, so you can enjoy fresh catches of the day.

Wakasagi (pond smelt)

わかさぎ

A freshwater fish of Lake Ashi, *wakasagi* is a local specialty chosen for the Top 100 Local Specialties in Kanagawa. It's been used in local cuisine throughout the ages, and now you can try a variety of dishes like deep-fried or sweet boiled fish at restaurants near the lake.





1 A thrilling adventure in the treetops, more than 10 meters high.
2 Admission (including insurance): adults (18 or over) ¥3,600; children (ages 6-17) ¥2,600. Family discounts available.

Thrilling Adventure in the Forest

An outdoor park filled with trees whose origin is in France. Zip among the treetops in our special safety harness and enjoy 40 different activities. Our two-hour course can be challenged by first-grade elementary school students and above. Even adults will appreciate the sense of accomplishment.

Forest Adventure Odawara
 フォレストアドベンチャー・小田原

☎ 080-4330-4030 **MAP - P31**
 ■ 4391-1, Kamenokouyama, Kuno, Odawara, Kanagawa
 ■ 9:00-17:00 ■ Closed on Thursdays
 ■ 15-minute bus ride from Odawara Station (JR, Odakyu Line)
 ■ <http://www.forest-aventure.jp>

Specialty Rice Bowl Restaurant Run by a Local Fish Dealer

Our specialty restaurant offers seafood rice dishes, and is a hot topic on TV and in magazines in Odawara. We are directly managed by an Odawara Port fish dealer, so you will be delighted by both the quantity and the excellent taste. Enjoy discovering your favorites from 40 different varieties of seafood rice dishes. Our menus have been created by our fresh fish experts, and whether you enjoy a rice bowl, sashimi or tempura, you will remember its distinct flavor. You can take a commemorative photo inside our restaurant, which is decorated with the traditional banners fisherman hoist when they get a plentiful haul of fish.

- 1** Our Impressive 'Lobster Rice Bowl' is 1,780 yen + tax.
- 2** We offer a wide variety of 40 different types of seafood rice dishes, many of which you will not find elsewhere.
- 3** Our interior lets you savor the atmosphere of a Japanese fish market.

Kaisendonoya Odawara Kaishu
 海鮮丼屋 小田原 海舟

MAP - P16 ①

☎ 0465-24-2237

- 1-14-55 Sakaecho, Odawara, Kanagawa
- Weekdays: 11:00 - 18:00 / Sat/Sun/Holidays: 11:00 - 19:30
- Open 365 days
- 3 minutes walk from Odawara Station (JR / Odakyu line)



1 A wide variety of dishes including set meals as well as donburi bowls, sashimi, and deep-fried seafood.
2 Just head for this large sign.

Taste and Volume You Sure Will Be Satisfied

Conveniently located – six minutes on foot from JR Hayakawa Station. Our ITAMAE chef gets the freshest seafood directly from the market every morning and turns them into delicacy. He offers a wide variety of dishes that have long been staples at Japanese homes, including tempura, sashimi, deep-fried and stewed seafood. Leisurely stroll around Hayakawa Fishery Harbor is also recommended.

Minato no Teisyokuya Ryoshimeshiyokudo
 港の定食屋 漁師めし食堂

☎ 0465-24-0056 **MAP - P16 ①**
 ■ 1-4-8 Hayakawa, Odawara, Kanagawa
 ■ Weekdays: 10:00-16:00; Sat./Sun./Holidays: 10:00-17:00
 ■ Open daily
 ■ 6-minute walk from Hayakawa Station

Restaurant えれなご

Buffet : Elenagosso

In the morning, Elenagosso's chefs go to the local fish market and select the freshest seafood available. They also mainly use vegetables from local farmers grown using fertilizer made from leftover fish. Enjoy as much of our local delicacies as you like at this sustainable restaurant's all-you-can-eat buffet.



Buffet : Weekdays

- Lunch / 11:00 ~ 14:45 **¥1,850**
- Tea Time / 15:00 ~ 17:00 **¥1,300**
 (snacks & sweets)

Weekends and holidays

- Brunch / 9:30 ~ 11:00 **¥1,500**
- Lunch / 11:00 ~ 17:00 **¥1,850**
- Child / age 4 ~ 12 **Half price**
- Child / 3 and under **free**



245 Kazamatsuri, Odawara city, Kanagawa, Japan
 ■ Short walk from Kazamatsuri Sta., 10min drive from Odawara Sta.
 ■ 7 days a week.
 ■ Payment by credit cards accepted. **MAP - P31**
<http://www.kamaboko.com/english/>

Point 3 Japanese Customs for Rooms and Meals

Please take particular care for characteristic Japanese culture and customs when eating meals or staying at *ryokan* (Japanese-style inns) which have a traditional Japanese atmosphere.



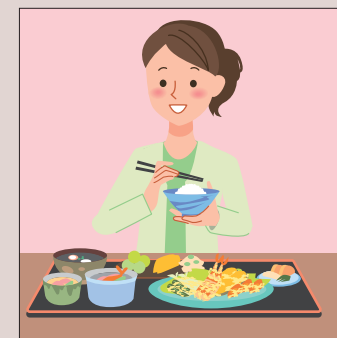
1 It is standard to remove your shoes in the entry hall before entering a room.

In the front entryway take off your shoes while facing forwards and then enter the room. You should then bend down and turn your shoes to face the other way, aligning them neatly.



3 Try wearing your yukata around the ryokan.

A yukata is a traditional type of Japanese clothing, often worn after bathing or while sleeping. Be sure to cover your body first with the right-hand side, then left-hand side. When staying at a ryokan, you're welcome to wander around in yukata.

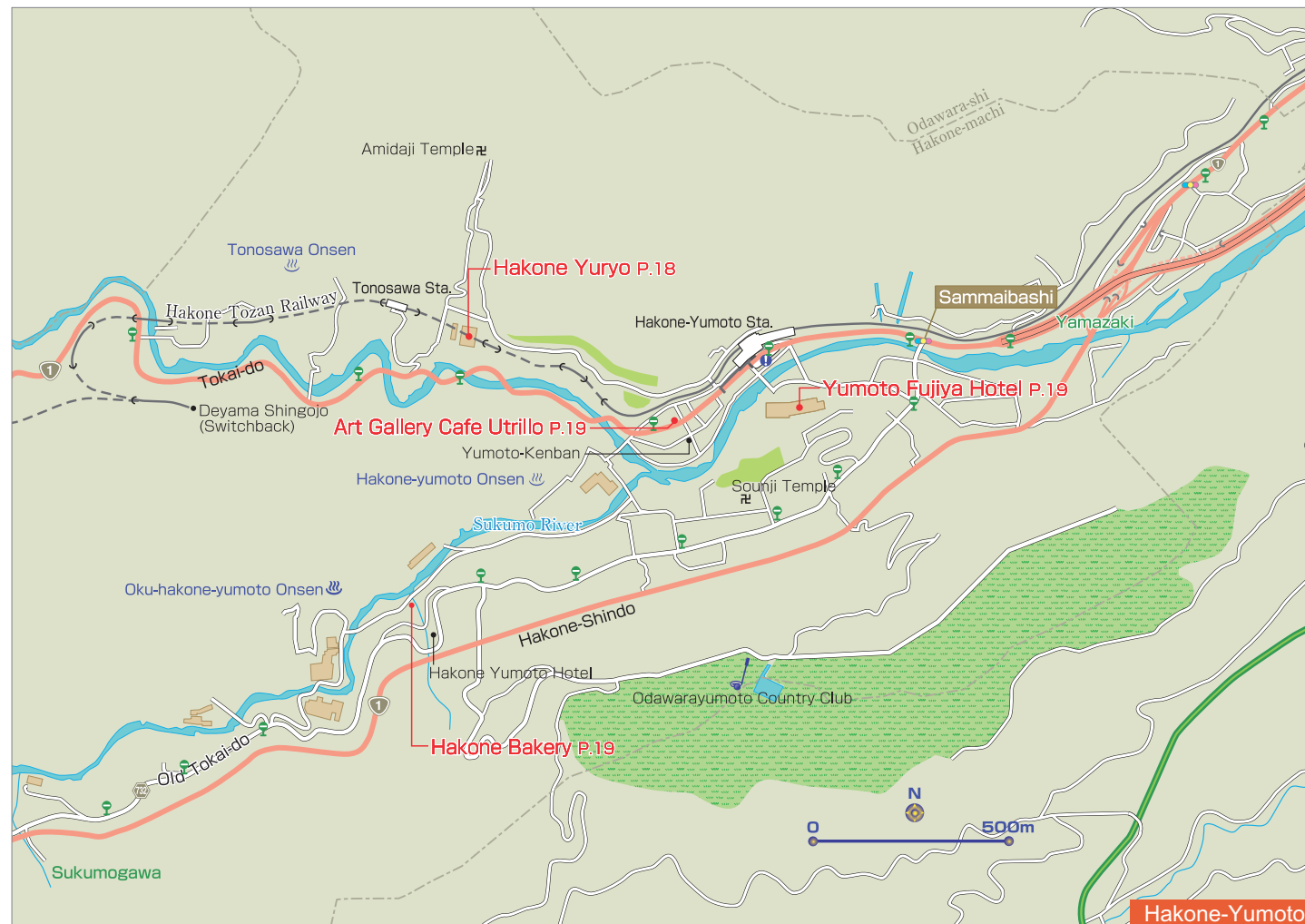


2 Bowls should be held in your hand when eating.

The bowl containing your rice as well as your soup bowl and other bowls should all be held in your hand while eating from them. Don't squeeze the chopsticks too strongly, hold them vertically, cross them over, or stab your food with them.

Simple Facts about Japanese-Style Rooms and Tatami Mats

- A Japanese-style room is one laid with tatami mats. One appealing feature is the rooms may be used for many purposes, such as a living room, bedroom, or guest room. A single tatami mat is roughly 180 cm x 90 cm, and is counted as 1 'jo' (a specific Japanese counter for tatami mats).
- Tatami mats provide Japan-style flooring. The face of tatami mats is woven grass, meaning they are highly absorbent, warm in winter, and cool in summer. Their fragrance also has a relaxing effect.



1 Enjoy this lunch set with sushi and tempura for ¥2,430 (plus tax).
2 You can easily see the hotel from Hakone-Yumoto Station.

Easy Access to Traditional Japanese Cuisine

Three-minute walk from Hakone-Yumoto Station. At Katsura-Japanese Cuisine and Sushi restaurant within the hotel, you can enjoy delicious lunches at reasonable prices, including sushi, tempura, and soba noodles. Recommended are carefully prepared menus like handmade soba noodles, sushi, and eel bowls. You can also enjoy locally produced sake.

Yumoto Fujiya Hotel 湯本富士屋ホテル

☎ 0460-85-6111 MAP P.18
256-1 Yumoto, Hakone-machi, Ashigarashimo-gun, Kanagawa
■ Lunch: 11:30-14:00 (till 14:30 on Sat./Sun./holidays); Dinner: 18:00-20:30
■ Open daily ■ 3-minute walk from Hakone-Yumoto Station (Hakone Tozan Railway) ■ <http://www.yumotofujiya.jp/en/>



1 Many regular customers come to enjoy our slow-cooked hashed beef (¥1,500) and Water Drip Coffee (hot, ¥900).
2 Spacious interior where you can relax on the sofa.

Enjoy Fine Art and Coffee

Enjoy coffee amid a retro ambiance while taking in the works of well-known artists including Maurice Utrillo. We also have a menu that includes spicy curry rice and a hamburger with mushroom sauce, as well as 10 to 15 varieties of desserts.

Art Gallery Cafe Utrillo 画廊喫茶ユトリロ

☎ 0460-85-7881 MAP P.18
692 Yumoto, Hakone-machi, Ashigarashimo-gun, Kanagawa
■ 9:00-20:00 ■ Holidays TBA ■ 3-minute walk from Hakone-Yumoto Station (Hakone Tozan Railway) ■ <http://utrillo-v.com/>

森の温泉。森のめし。

箱根温泉

HOT SPRINGS

Large communal baths: "Honden Yurakuan Oyu"

Indoor baths, open-air baths, pottery baths, and sauna facilities

Adults (including children of junior high school age or older): 1,400 yen
Children (4-12 yrs.): 700 yen
Children 5 yrs. and under are not admitted.

Opening Hours: Open 365 days a year (the resort may occasionally be closed for maintenance work)
Weekdays: 10:00-21:00 (last admission at 20:00)
Saturdays, Sundays and public holidays: 10:00-22:00 (last admission at 21:00)

Private open-air baths: "Hanare Yuya Kaden"

19 private rooms available

Reservations can be made by telephone (0460-85-8411) up to one month in advance.

Fee for private room use (per room, per 60-minute period):

Type 1 (7rooms)	Type 2 (8rooms)	Type 3 (4rooms)
3,900yen	4,900yen	5,900yen

Opening Hours: Open 365 days a year (the resort may occasionally be closed for maintenance work)
Weekdays: 10:00-21:00 (last admission at 20:00)
Saturdays, Sundays and public holidays: 10:00-22:00 (last admission at 21:00)

Hakone Yuryo — A hot spring resort that's easily accessible from Tokyo as a day trip

Hakone Yuryo can be reached easily from both Haneda Airport and Narita Airport, and is situated in one of Japan's most outstanding hot spring resort areas.

Experience a comfortable, enjoyable train journey on the Odakyu Line!

Shinjuku Sta. Approx 115 minutes (Limited Express "Romancecar" Odakyu Line + Hakone Tozan Line) → Hakone-Yumoto Sta. Approx 90 minutes → Narita Airport

Hakone-Yumoto Sta. Approx 45 minutes → Haneda Airport

Yokohama Sta. Approx 130 minutes (Hakone-Yumoto Airliner (Highway express bus)) → Hakone-Yumoto Sta.

Famed store under Hakone Yumoto Hotel management

Savor the rich buttery flavor of this renowned and beloved croissant as well as our special breads like soy-melon buns, raisin rye bread (aka pain de seigle aux raisins), and more.

Raclette cheese toast
(Hakone Yumoto shop shown. Not available at Odawara shop.)

Hakone-Yumoto Main Shop

Hakone Bakery Odawara Station Shop ☎ 0465-20-1126 7:00-21:00
Odawara Station, Nishi-guchi area, in front of Tokaido Shinkansen ticket wicket

Hakone Bakery

184 Yumoto Chaya, Hakone-machi, Ashigarashimo-gun, Kanagawa
☎ 0460-85-8876 Free parking (10 cars)
9:00-17:00 (last order, 16:30); closed Wed.

Make your trip
more
enjoyable!

History of Hakone, Odawara 歴史

In Hakone, the Hakone volcano has produced caldera and onsen (hot springs) over many long years. It is an area overflowing with mystery and history, where countless legends and the vestiges of many great people still live on.

<Nara Period to the Warring States Period>

Hot springs were opened in the Nara period (around 700AD). The hot springs were related to the Late Hojo Clan of the Warring States period.

According to one theory, the hot springs of Hakone were first opened in the Nara period (around 700AD). According to folklore of the time, "When 'Kiyosada', a priest of Kaga and disciple of Taicho, came to Hakone-Yumoto to pray and study, the hot springs began to flow, and the small pox which had been afflicting the people was cured". During the Warring States period (from around 1495 AD onwards), the Late Hojo Clan ruled as daimyos over the whole Kanto region for five generations from their base in Odawara Castle. Odawara prospered as a center of politics, economy and industry. Soun Hojo, the founder of the clan, was enshrined in 'Soun-ji' in Hakone-Yumoto, so military commanders would often visit Hakone to pay homage. The source of the springs near Soun-ji that the military commanders bathed in still remains, and the hot water there still continues to flow.



Odawara Castle was the ruling castle for five generations of the Late Hojo Clan from around 1496 onwards. It is now a castle ruins park, where beautiful views can be seen from the castle towers.

* For an earthquake-resistant repair work and an exhibition renewal, Odawara Castle closes. A period until the end of April, 2016.

A statue of Soun Hojo at the west entrance of Odawara Station.



The 'Taiko Stone Bath' in the Miyanoshita hot spring. This is the remains of the open-air bathtub created by Hideyoshi to heal his troops, and is no longer used for bathing.

<Warring States Period to Edo Period>

A place of healing for troops during Hideyoshi Toyotomi's attack on Odawara (1590). Its name come to back be known nationwide.

The 'Battle of Odawara' (1590) was daimyo Hideyoshi Toyotomi's final battle in his unification of the country. Hideyoshi spent two months fortifying Ishigakiyama in order to capture Odawara Castle. It is said that during the protracted war, Hideyoshi built a stone bathtub that utilized the hot springs of Jakotsu river in Miyanoshita, and used it to heal his soldier's wounds, as well as bathing in it himself.

In addition, at the height of the war, Hideyoshi held a tea ceremony and SEN no Rikyu, Ieyasu Tokugawa, Masamune Date, and Yodogimi all visited, allowing the area to prosper. It is said that Hime-no-mizu, a famous mineral water from Ohiradai, was used by Hideyoshi Toyotomi for the tea ceremony, and that the daughters of the Late Hojo Clan and the Toyotomi Clan used it as a face lotion. From then on, many women visited Hakone in order to follow their example.

<Edo Period to Meiji and Taisho Periods>

Transportation networks arranged by Ieyasu Tokugawa and Yukichi Fukuzawa, and the development of popular tourist attractions.

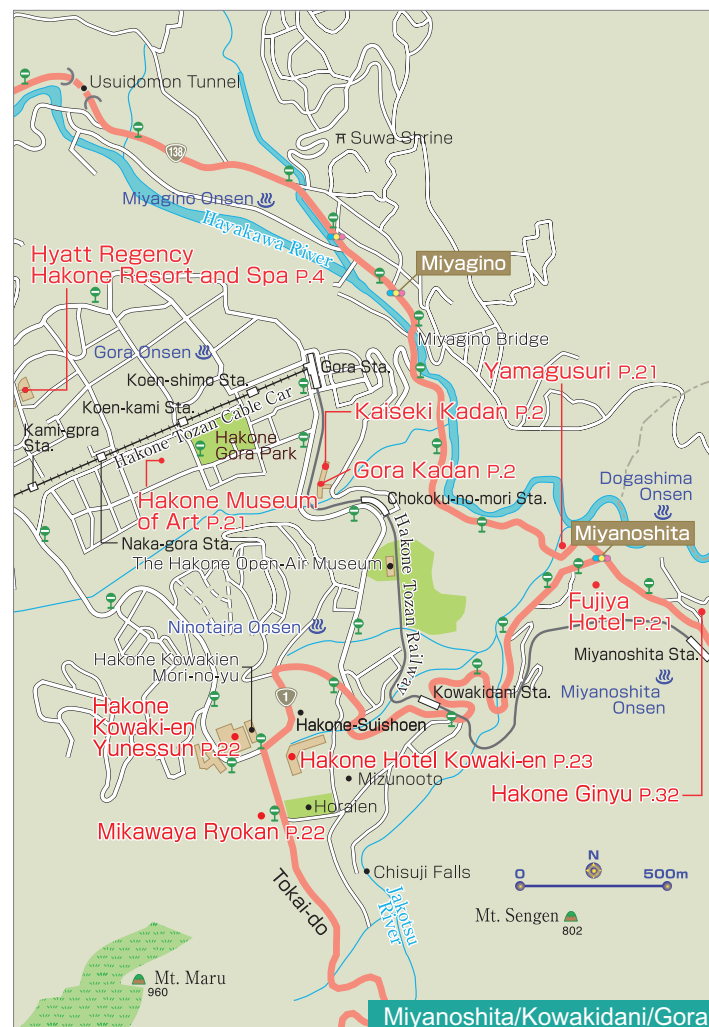
In 1603, Ieyasu Tokugawa, who set up the Edo shogunate, began work on the Tokaido highway. A hot spring health resort was born in Hakone, and it became famous for the '7 Hakone Hot Springs'. However, the inaccessibility of the hilly roads became known as the most perilous part of the Tokaido, and then in 1626 the shogunate established the 'Hakone Checkpoint' in order to secure defence of Edo.

From the Meiji period onwards, the 'Hakone Checkpoint' was abolished, and development of the area progressed as a location for recuperation and sight-seeing. Yukichi Fukuzawa enjoyed visiting the hot springs of Hakone, and after talking to local sympathizers, he assisted with the development of National Route 1 linking Odawara and Hakone. In 1877, Fujiya Hotel was opened as a hotel aimed at overseas visitors. Railroads were also established thanks to Odakyu Electric Railway, and the area developed as a popular, accessible tourist location.



The main role of the Hakone Checkpoint was checking for "letting in guns and letting out women". They particularly kept out a watchful eye for carried weapons, and wives of daimyos fleeing from Edo where they had been forced to live and held hostage.

※歴史や伝承の解釈には諸説あります。There are various theories regarding the history and the traditions.



1 Fujiya style rainbow trout, ¥2,200 (plus tax). The trout is sautéed in butter, then combined with mirin, sweetened sake, and soy sauce. This dish was created in response to the requests by many non-Japanese guests of the trout served as Japanese style.
2 "Hana Goten" (the Flower Palace) is the symbol of the Fujiya Hotel.

French Cuisine at the Old Established Hotel

This hotel was established in 1878 as Japan's first genuine resort hotel. It has been esteemed by many celebrities since then, including Helen Keller and Charles Chaplin. The main dining restaurant "The Fujiya", with its coffered ceiling and the paintings of birds and flowers on it, has served an elegant and modern taste of French Cuisine.

🏠 Fujiya Hotel 富士屋ホテル

☎ 0460-82-2211 (representative) MAP - P21

■ 359 Miyanoshita, Hakone-machi, Ashigarashimo-gun, Kanagawa ■ Breakfast: 7:30-9:30/Lunch: 11:30-14:00 (14:30pm on Sat/Sun/holidays)/Dinner: 17:45-20:00 (reservations required) ■ 7 minutes walk from Miyanoshita Station (Hakone Tozan Railway) ■ <http://www.fujiyahotel.jp/>



1 A perfect match for the great texture of barley and rice.
2 Our "Supreme Lunch Set" (2,680 Yen + tax) is served with traditional Japanese dishes, including tofu, dried fish, and fried kamaboko fish cake.

Delicious Traditional Japanese Food

Japanese yam is a beloved traditional food from ancient times. Its sticky texture is a perfect match for Japanese rice! Experience the real thing for traditional Japanese cuisine and culture with our fine set menu: tofu, dried fish, and miso soup. Consult with us as well for halal and vegetarian menu. What's more, bring this magazine when you dine at Yamagusuri and get a gift of yosegi-zaiku (parquetry goods).

🍴 Hakone Jinenjonomori Yamagusuri 箱根 自然薯の森 山薬

☎ 0460-82-1066 MAP - P21

■ 224 Miyanoshita, Hakone-machi, Ashigarashimo-gun, Kanagawa
■ 7:00 - 21:00
■ Open daily
■ 9 minutes walk from Miyanoshita Station (Hakone Tozan Railway)



1 The museum's classic Japanese garden, a Registered Monument of Japan, has one of the country's finest and most diverse moss gardens.
2 Explore priceless objects have art of historical and aesthetic value, including the important cultural asset of Male figure of Haniwa from ancient Japan.

Experience the Beauty of Japan

Aesthetic pleasures await you in oldest art museum of Hakone. Stroll a Japanese garden after viewing classic pottery and tea-ceremony vessels. Or relax from a seated garden view in a tea house serving green tea and a seasonal sweet. Bring this issue and enjoy entry-fee discounts for adults (¥100) and for students (¥50).

🏛️ Hakone Museum of Art 箱根美術館

☎ 0460-82-2623 MAP - P21

■ 1300 Gora, Hakone-machi, Ashigarashimo-gun, Kanagawa ■ Apr.-Nov.: 9:30-16:30 / Dec.-Mar.: 9:30-16:00 (last admission 30 mins. before closing) ■ Closed Thurs. (open if a holiday / Nov.: open daily) ■ Entry fees: adults, ¥900; high school and university students, ¥400; junior high school students and younger, free ■ A minute's walk from Koenkami Station (Hakone Tozan Cable Car) ■ <http://www.moart.or.jp/hakone/en>

- 1 The Main building has a distinct look, similar to a shrine or castle. Guest room rates per person start from ¥20,130 for a standard room, from ¥25,962 for a room with private bath included.
- 2 Enjoy fresh seasonal Traditional Japanese Cuisine.
- 3 Bathe in natural hot spring baths (Onsen).



Historical Japanese Hotel with Full Service Staff

Mikawaya Ryokan is a traditional Japanese style hotel that has been in operation from 1883 to the present day. Built using construction techniques used during the time of the Samurai, visitors to Japan would be hard pressed to find a more authentic Japanese experience. We are located in Hakone, Japan (2 hours west of Tokyo) seated on a dormant volcano, which supplies our natural hot spring baths found throughout our hotel.



Mikawaya Ryokan 三河屋旅館

☎ 0460-82-2231 MAP → P21
 ■ 503 Kowakidani, Hakone-Machi, Ashigarashimo-gun, Kanagawa ■ 20 minutes by bus from Hakone-Yumoto Station (Hakone Tozan Railway)
 ■ <http://www.hakone-mikawaya.com/language/09en.htm>



- 1 You can enjoy the luxurious and relaxing hot spring experience in brand new room with private open-air bath.
- 2 The historic garden was landscaped in 1914, as a private garden of a laisure home owned by MITSUI who is a business tycoon in Edo period.

Experience Genuine Four Seasons of JAPAN

Hakone Hotel Kowaki-en is a part of Hakone Kowaki-en which is consists of two accomodations and Spa amusement park. The Hotel boasts a vast expanse of beautiful Japanese garden in front of the lobby. You can enjoy Cherry Blossoms in Spring, Twinkle Fireflies Dancing in Summer, Colored Maple Leaves in Autumn and Sparkle White Snow in Winter. A Warm welcome awaits you at Hakone Hotel Kowaki-en.

Hakone Hotel Kowaki-en 箱根ホテル小涌園

☎ 0460-82-4111 MAP → P21
 ■ 1297 Ninotaira, Hakone-machi, Ashigarashimo-gun, Kanagawa, Japan
 ■ 20 minutes by bus from Hakone-Yumoto Station (Hakone Tozan Railway)
 ■ <http://hotel.hakone-kowakien.com/>



Hakone Free Wi-Fi App is released

"HAKONE FREE Wi-Fi SERVICE" Easy to connect. After downloading the app to your smartphone, tablet, or laptop, starts up the app(it) and connect to many hotspots with a single click. Hotspots in Hakone will be searched automatically and connect automatically. Of course it's FREE.

HAKONE TOWN Tourism Sec

TEL 0460-85-7410
 Open hours 8:30~17:15
 Closed on Saturday, Sunday and Public holidays



HAKONE KOWAKI-EN YUNESSUN

Hot Spring Amusement Park and Spa Resort

Hakone Kowaki-en YUNESSUN Spa Resort has so many kind of Spas. You can have fun at this all weather facility even on rainy days. So you'll find an array of fun Spas here. And we have many kind of shops and restaurants, so you can enjoy all day.

YUNESSUN [Swim suit Area]



MORINOYU [Naked Area]



Mio Mall



Shop "Mio Mall" is boosting the wide Selection of items. You'll find Hakone souvenirs!

Restaurants



We have many kind of restaurant. Italian, Japanese, and so on. Of course only the restaurant can be use!

Admission Fee (tax included)

[YUNESSUN] Adult Price ¥2,900 Child Price ¥1,600
 [MORINOYU] Adult Price ¥1,900 Child Price ¥1,200
 [Combined] Adult Price ¥4,100 Child Price ¥2,100
 [Mio Mall] Free of charge Admission free

Business hours

[YUNESSUN] 9:00~19:00 [March to October]
 9:00~18:00 [November to February]
 [MORINOYU] 11:00~21:00 [All season]
 Free of charge Admission free

Hakone Kowaki-en YUNESSUN

Tel.0460-82-4126

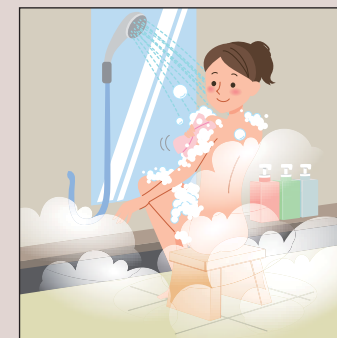


1297, Ninotaira, Hakone-machi, Ashigarashimo-gun, Kanagawa-Japan 250-0407 <http://www.yunessun.com/>

Point 4

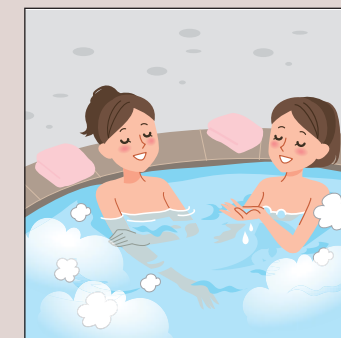
Pointers on Bathing Etiquette

These are places to relax and heal your mind and body, so enjoy your time calmly and refrain from any public pool-type antics.



1 Wash before entering the bath!

Wash face and body, then rinse off all soap before entering the tub. Enter naked, without wearing a towel, and enjoy soaking—only soaking.



2 No towels in the tub

Enter the bath slowly, to avoid splashing. As a matter of public hygiene, don't put or let your towel into the water and, in general, follow common-sense manners as well as these etiquette pointers.



3 Dry off after bath and before entering dressing room

Dry off with a towel in the bathing area, before entering the dressing room, to prevent the dressing room floor getting wet.

Onsen FAQs

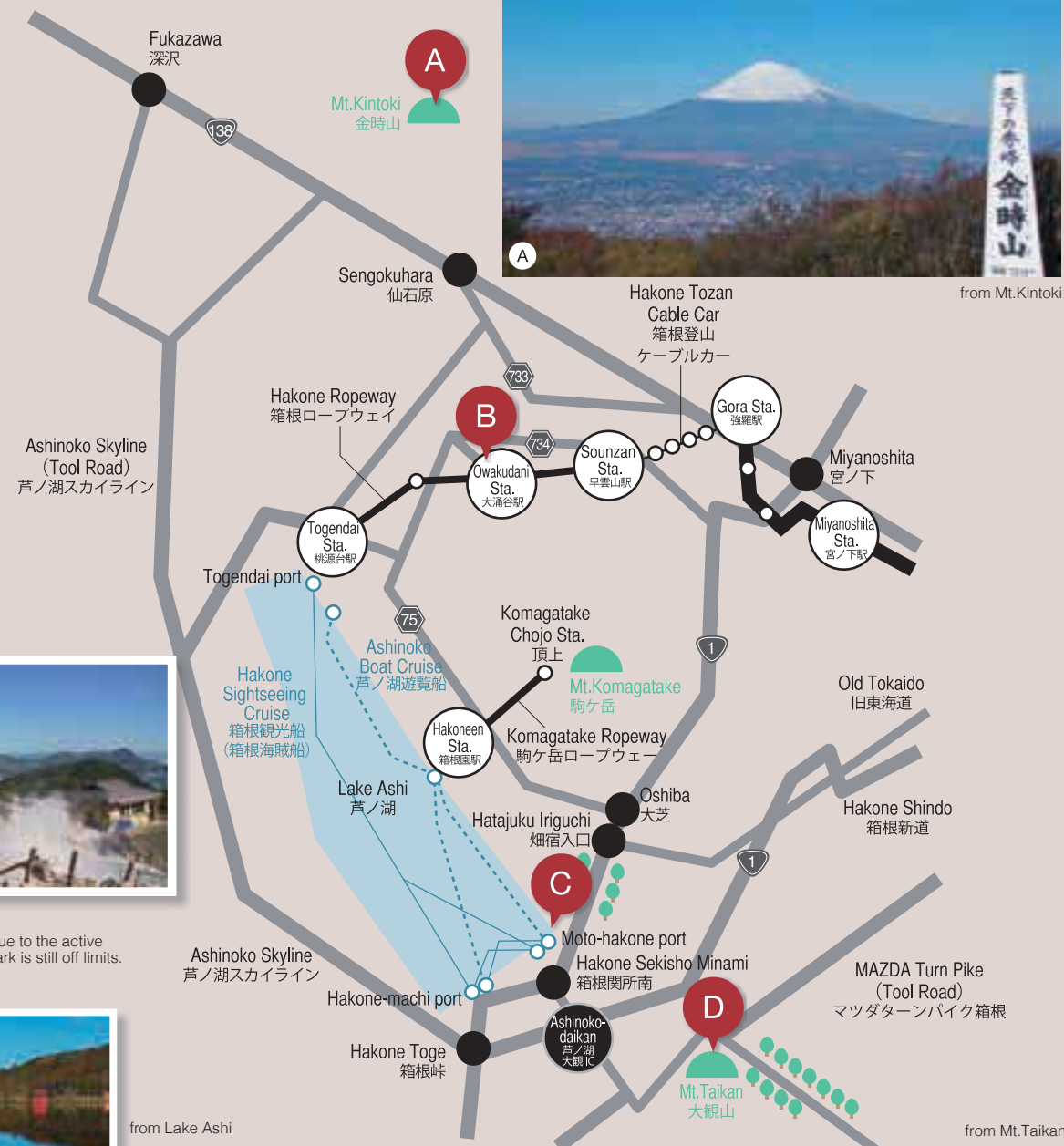
- Onsen water can be quite dense and the heat intense, so avoid getting dizzy by limiting your time: don't soak too long (no more than 15 minutes). Immerse yourself up to neck or waist, no deeper, and be sure to hydrate before and after a bath.
- Bath water may have some "floaties" that are natural mineral components, not trash or filthy bits, so don't worry if something tiny comes your way.

Breathtaking Views of Mt. Fuji

Mt. Fuji, symbolic home to Japanese people, became a World Cultural Heritage site by virtue of its beauty and being a source of spiritual as well as artistic inspiration. Experience all the joys of uniquely viewing Japan's sacred peak from Sengokuhara and Moto-Hakone areas.



from Mt.Kintoki



from Owakudani
* As of November 2015, due to the active volcano, the Owakudani Park is still off limits.



from Lake Ashi



C



from Mt.Taikan

D

Soak in a Fine View of World Heritage Mt. Fuji

Located at the foot of Mt. Fuji and overlooking Lake Ashi, Hakone is a popular tourist destination that has continually provided visitors with vistas of unsurpassed scenic beauty. The Hakone region makes up part of Japan's Fuji Hakone Izu National Park. Nestled among the natural wonders and serenity of this magnificent national park, Hotel Green Plaza Hakone offers visitors world class luxury and comfort for a totally relaxing experience.



Lobby



Japanese kaiseki cuisine



Asian twin room

Overnight & Two Meals with Hot Spring Plan

¥14,000 - ¥32,500 (per adult)

Asian Twin Plan

¥22,500 - ¥40,500 (per adult)

One-Day Bath with Lunch Plan

(face and bath towels incl.)

Weekdays (Japanese lunchbox)
Adult ¥3,800 / Child ¥2,900
Sat., Sun., holidays and specified days (lunch buffet)
Adult ¥3,800 / Child ¥1,800

- Bath Hours 12:00 - 15:00
Restaurant Hours 12:00 - 14:30 (last order, 14:00)
- Big bath not available 1st and 3rd Thu.
other closed days: TBA
- Above rates are subject to change and include consumption tax but exclude bath tax.



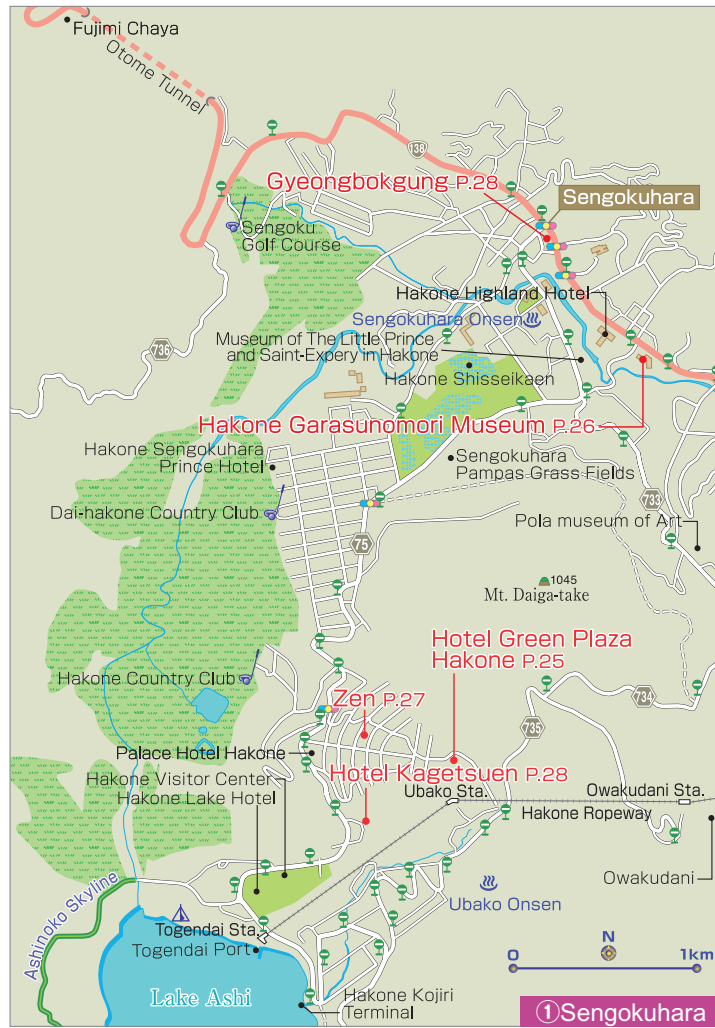
HOTEL GREEN PLAZA HAKONE

1244-2 Sengokuhara Hakone-machi Ashigarashimo-gun Kanagawa-ken 250-0631
[Access] • 35 minutes by Izu-Hakone Bus from Hakone-Yumoto Station;
5-minute walk from Ubako bus stop
• 3-minute walk from Ubako Station on Hakone Ropeway

Wi-Fi connection (all guestrooms & lobby)

Reservation Center 0570-092-489 [Open all year round] 9:00-21:00

<http://www.hgp.co.jp/language/english/sp/>



1 Unique craftsmen carefully combine pieces of special wood to create high-quality pieces that become more attractive and compelling the more you use it. These pieces make wonderful souvenirs as highly portable items like chopsticks and key holders that are quite popular.

Japan's Traditional Woodcraft

Izumiya is an exclusive yosegi-zaiku (parquetry) house renowned not only for great design and quality but also the broadest variety of goods in Hakone area. They carry many original products, especially the popular himitsu-bako (secret or puzzle box). Goods variety includes trays, iPhone cases, paulownia tansu, and more. We ship overseas.

Hakone Parquetry House IZUMIYA

伝統工芸 箱根寄木細工専門店 いづみや

☎ 0460-83-6030

MAP-P26 ②

- 158 Hakone, Hakone-machi, Ashigarashimo-gun, Kanagawa
- 10:00-17:00 ■ Closed on Thursdays ■ Parking available
- 45 minutes by bus from Hakone-Yumoto Station (Hakone Tozan Railway)



1 Most popular is our first-class serving of cold soba loaded high with seafood and vegetables (¥2,380): ten kinds of tempura, including two jumbo shrimps, eggplant, eringi and shitake mushrooms.

2 Walk through the torii gate and you're here.

Your Place for Tempura Soba

Dive into our taste-tempting menu boasting a variety of authentic Japanese dishes—mouth-watering tempura and buckwheat noodles (soba), including our house specialty of Lake Ashi smelt tempura, rice topped with soy-flavored chicken and egg, and other treats. Tourists everywhere prize Shinsho for our savory selection and hearty portions.

Shinsho Soba 深生そば

☎ 0460-83-6618

MAP-P26 ②

- 6-17 Motohakone, Hakone-machi, Ashigarashimo-gun, Kanagawa
- Open 11:00-16:30 ■ Holidays TBA ■ Parking available ■ 40-minute bus ride from Hakone-Yumoto Station (Hakone Tozan Railway)
- <http://www.moart.or.jp/hakone/en>



1 With our exclusive lobby view of Mt. Fuji, you'll think Japan's most famous mountain was there just for you!

2 Hot spring with a fabulous view of Mt. Fuji Room rates per person from ¥13,500 for overnight stays with breakfast.

Matchless View of Mt. Fuji

LaLa Gotemba offers our guests an uncompromising, matchless view of Mt. Fuji from specially located guestrooms as well as a brilliant night view of the city from outdoor baths and guestroom verandas. Enjoy exciting sight-seeing and shopping from our convenient location, just 10 minutes by car to Gotemba Premium Outlets. Express bus service from Haneda and Shinjuku to Gotemba Interchange approx 1.5-hour bus ride from Shinjuku Station.

LaLa GOTENBA Hotel & Resort

☎ 0120-620-980

MAP-P30

- 2571 Fukasawa, Gotemba-shi, Shizuoka Prefecture
- 40-minute bus ride from Hakone-Yumoto Station (Hakone Tozan Railway)
- <http://www.lala-gotenba.com>



1 Many exhibitions are held, so you'll always find something interesting even with repeat visits.

2 Also attractive is our cafe-restaurant, with professional Italian singers performing *canzone*.

Enter a Magical World of Glass

When you walk down the corridor of sparkling crystal leading into our museum, reminiscent of a medieval noble's house, you enter a world of Venetian glass spanning the work of artisans from the 15th-19th centuries to today. Garden trees decorated with tens of thousands of crystal glass beads shine dazzlingly.

Hakone Garasunomori Museum

☎ 0460-86-3111

MAP-P26 ①

- 940-48 Sengokuhara, Hakone-machi, Ashigarashimo-gun, Kanagawa ■ 9:00-17:30 (last admission: 17:00) ■ Open daily ■ Admission fees: adults, ¥1,500; high school and university students, ¥1,100; primary and junior high students, ¥600. ■ 25-minute bus ride from Hakone-Yumoto Station (Hakone Tozan Railway) ■ <http://www.ciao3.com>



1 A refined yet relaxed interior. What's more, guestrooms let you enjoy the magnificence of nature, while rooms on the top floor command a spectacular view of Mt. Fuji.

2 Japanese-style creations are served for dinner. The photograph shows an example.

Enjoy a Private Open-Air Bath

This is a quiet forest inn in Sengokuhara. All nine rooms have cypress-lined open-air baths, allowing you to privately enjoy the active hot spring waters that flow continuously. Please enjoy our Japanese-style creations for dinner, made with fresh coastal fish and fresh local vegetables, as well as Fujiyama Wagyu beef.

Hakone Yuyado Zen 箱根湯宿 然

☎ 0460-84-2400

MAP-P26 ①

- 1245-96 Sengokuhara, Hakone-machi, Ashigarashimo-gun, Kanagawa
- 40-minute bus ride from Hakone-Yumoto Station (Hakone Tozan Railway)
- Phone reservation time: 10:00-20:00

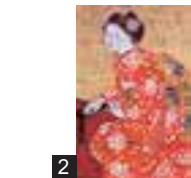
FUJIYA HOTEL GMAH

A resort hotel by Lake Ashi, with views of the peak of Mt. Fuji.



芦ノ湖 HAKONE HOTEL

- 65 Hakone, Hakone-machi, Ashigarashimo-gun, Kanagawa, 250-0521, JAPAN
- Tel: +81-460-83-6311 ■ <http://www.hakonehotel.jp/en/>



- 1 From the museum observation gallery perched atop a small hill, you can enjoy an emblematic view of Japan created by Lake Ashi and Mt. Fuji.
- 2 Maiko by Sho Ishimoto

Nihonga Museum with a Magnificent View

The museum overlooks Lake Ashinoko, and on a clear day you can see Mt. Fuji. There are art exhibitions showcasing various themes centering on Nihonga selected from 4,000 pieces in our collection, ranging from works by great masters to fresh young talent. Enjoy tea served in artistic ceramics at the tea lounge. Hot sandwiches and pizza are also available.

Hakone Ashinoko Narukawa Art Museum 箱根・芦ノ湖 成川美術館

☎ 0460-83-6828 MAP P26 ②

- 570 Moto-hakone, Hakone-machi, Ashigarasimo-gun, Kanagawa
- 9:00-17:00 (last admission: 16:45) ■ Open daily ■ Admission: adults, ¥1,300; high school and university students, ¥900; primary and junior high students, ¥600.
- 35-minute bus ride from Hakone-Yumoto Station (Hakone Tozan Railway)
- <http://www.narukawamuseum.co.jp>



- 1 Room rates per person: overnight with two meals, from ¥11,000 (plus tax). Day trip, including bathing fees (11:00-15:00): adults, ¥1,500 (plus tax); children, ¥1,000 (plus tax).
- 2 From the deluxe suite you have a superb view of the Hakone mountain range—all to yourself.

Inn with Superb View of Mt. Fuji and Four Sulfur Hot Springs

Our Wi-Fi enabled guestrooms have large windows, with some on the garden side looking out over Mt. Fuji. We have two types of hot springs, with four opaque sulfur springs you can reserve free of charge. For dinner, try our seasonal Japanese/Western dinner tray, as beautiful as it is delicious.

Hotel Kagetsuen ホテル花月園

☎ 0460-84-8621 MAP P26 ①

- 1244-2 Sengokuhara, Hakone-machi, Ashigarashimo-gun, Kanagawa
- 40-minute bus ride from Hakone-Yumoto Station (Hakone Tozan Railway)
- <http://hotel.kagetsuen.net/>



- 1 Gaze at the grace of Mt. Fuji and Lake Ashi from the large windows of the guest rooms. The beautiful scenery is like something out of an artist's painting.
- 2 The building's exterior. 1 night with 2 meals from 20,400yen per person.

A view of Mt. Fuji from every room

'Ryuguden' is a Japanese style hot spring hotel situated on the shores of Lake Ashi. All of its rooms command a magnificent view of Mt. Fuji and Lake Ashi. It has the traditional beauty of Japanese architecture along with hot springs and splendid Japanese-style meals. Our hotel offers a unique luxury that allows you to enjoy Mt. Fuji and the world of Japan to your heart's content.

Ryuguden 龍宮殿

☎ 0460-83-1121 MAP P26 ②

- 139 Moto-hakone, Hakone-machi, Ashigarashimo-gun, Kanagawa
- 65 minutes by bus from Hakone-Yumoto Station (Hakone Tozan Railway)
- <http://www.princehotels.co.jp/ryuguden/>



- 1 2 Relax and enjoy your meal in our modern seating, with sunken-style low tables. We also offer transportation to and from the station.

Popular Yakiniku with Our Inherited Secret Sauce

Cook flavorful Wagyu beef in a smokeless roaster and dip it in our inherited secret sauce. We offer an extensive a la carte menu of healthy Korean cuisine, and our special cold noodles are so popular they've been featured on TV.

Korean Cuisine Yakiniku Gyeongbokgung 韓国料理・焼肉 景福宮

☎ 0460-84-5529 MAP P26 ①

- 74-1 Sengokuhara, Hakone-machi, Ashigarashimo-gun, Kanagawa
- Lunch: 12:00-14:00 / Dinner: 17:30-22:00 ■ Holidays TBA
- 25-minute bus ride from Hakone-Yumoto Station (Hakone Tozan Railway)

Hakone

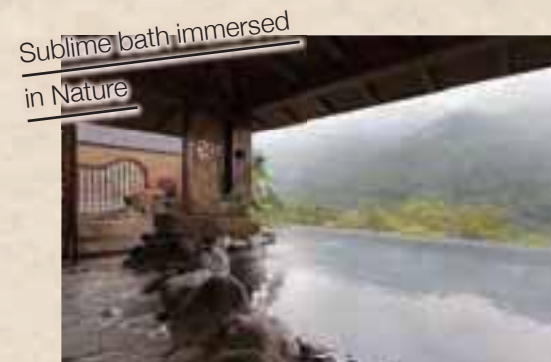
Onsen Short List

There are many kinds of Hakone hot springs (*onsen*) in which you can immerse yourself in luxuriant relaxation: those offering magnificent views or opaque springs where the color changes through shifting minerals; onsen with reserved bathing to relax in private or with unique colors, scents, and more. Indulge yourself in a bevy of choices suited to your travel needs and personal preference.



Outdoor bath with stunning view of Mt. Fuji

Hotel Green Plaza Hakone (see page 25)



Sublime bath immersed in nature

Hakone Ginyu (see page 32)



Opaque water brimming with the essence of onsen bathing

Hakone Yuyado Zen (see page 27)



Bath overflowing with a playful spirit

Hakone Kowaki-en YUNESSUN (see page 22)



Reserved bathing for ultimate relaxation in private

Hakone Yuryo (see page 18)

MISMO HAKONE ENGLISH vol.3

Staff
Publisher
Kazuhiro Nakamura

Editor in Chief
Yoshiko Maki

Deputy Editor in Chief
Koichiro Uramoto

Sales&Promotion Staff
Jun Saito

Editor
Kayoko Aihara
Hiroko Matsubayashi

Designer
Yukako Miyazawa
NIPPON PRICOM,inc.

Photographer
Junichi Ihara
Megumi Sakurai

Map Design
Shigeko Kobayashi

DTP Staff
Junna Shirasawa
Satomi Kamiya

Special Thanks
McDAVIS ASSOCIATES,INC.
NIPPON PRICOM,inc.

Cooperation 協力
Odakyu Electric Railway Co., Ltd.
小田急電鉄株式会社

Odakyu Hakone Group
小田急箱根グループ

HAKONE TOWN
箱根町

HAKONE Convention Bureau
箱根コンベンションビューロー

Hakone Town Tourist Association
一般財団法人箱根町観光協会

Odawara City
小田原市

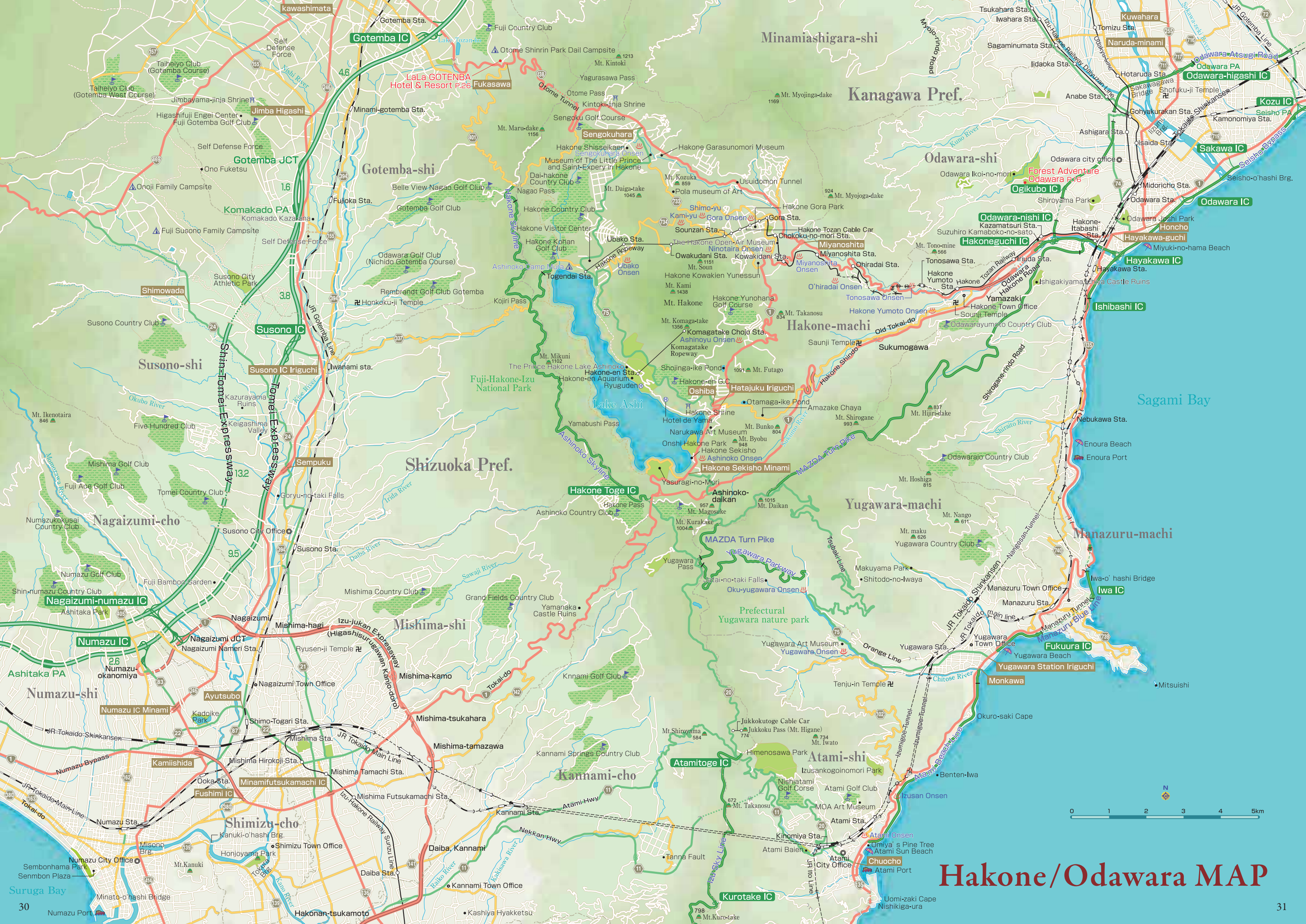
Issue 発行
iNCLUBE Co., Ltd.
株式会社インクルーブ

<http://www.mismonet.com>

本誌の広告に関するお問い合わせは
株式会社インクルーブ
〒215-0021
神奈川県川崎市麻生区上麻生1-5-1
りそな新百合ヶ丘ビル5F
営業企画部 ☎044-959-3750

Printing and bookbinding 印刷・製本
SANKEI SOGO PRINTING Corporation
サンケイ総合印刷株式会社

次号は2016年5月発行予定です。



Hakone/Odawara MAP



HAKONE GINYU

連山を見渡し
山紫水明の
境に遊ぶ



*The guest feel 5 senses in scenery and find so many impression,
This is our Ryokan concept.*

