

JAPAN



2017
Winter/
Spring

vol.5

FREE

English
英語版

HAKONE

箱根

HAKONE/ODAWARA VISITOR'S GUIDE

Detailed
MAP
Included



Mt. Fuji and Lake Ashi

Mいiすsみo😊
【ミスモ*はこね】

Japanese Culture
and Etiquette



“A most exclusive Japanese retreat”

A stay in Gôra Kadan, the former retreat of the Imperial Family, Kanin-no-miya, situated in the heart of Hakone National Park, is an invitation to bring your five senses to life by immersing yourself in the ancient Japanese way of life.



The rooms have been designed in a minimalist style, and the hotel's facilities include a swimming pool, a spa, and a beauty salon.



ALL AROUND THE WORLD, UNIQUE IN THE WORLD Our 500 restaurants & hotels offer the finest experiences all over the world.

Hotel
GÔRA KADAN

2 guests occupancy 50,000~90,000yen
Room charge half board (dinner & breakfast) per person, per night.
All prices excluding tax/including service charge.

Tel. +81(0)460-82-3331
✉ reservation@gorakadan.com

Restaurant
Kaiseki KADAN 花 苑 花 壇

located inside the luxurious inn GÔRA KADAN
Restaurant of the Kaiseki cuisine
Tel. +81(0)460-82-3333
✉ kadan@gorakadan.com



Contents

- 5 Getting to Hakone
- 6 Let's Enjoy Hakone's Various Rides!
- 8 Transportation Hakone Freepass, Tickets information
- 10 Events of the Year in Hakone
- 12 Must See in Hakone
- 14 Gourmet Foods & Good Goods
- 16 Odawara
- 18 Hakone-Yumoto
- 22 Miyanoshita, Kowakidani, Gora
- 25 Breathtaking Views of Mt. Fuji
- 26 Sengokuhara, Gotemba, Lake Ashi
- 29 Onsen Short List
- 30 Hakone / Odawara Map

[Culture and Etiquette]

- 3 Simple Japanese
- 4 Pointers on Bathing Etiquette
- 9 Shrine and Temple Etiquette
- 23 Japanese Customs for Rooms and Meals
- 24 History of Hakones, Odawara



Information published in this magazine is as of November, 2016. There may be cases of prices having been changed since then, so please check with the stores before use. And there are instances of consumption tax or bathing tax, other service fees applied separately. The overnight stay prices are a single person charge on weekday (Monday to Thursday and Sunday, excluding the day before a holiday) overnight stay with two meals, for a room by two persons unless otherwise stated.
※ The details of what have been referred in this magazine could be changed or discontinued due to weather or other reasons. Please check with the organizer/facility/store before heading out.

Please note that the opening/business hours, charges, closed days, event opening periods and menu contents of facilities and stores published in this magazine are subject to change without notice.

Unauthorized reproduction/copying of photographs, illustrations, maps or articles in this magazine are strictly forbidden.

Point 1

Simple Japanese

If you can learn some simple Japanese, it will be useful when trying to communicate.

Greeting and Daily Conversation

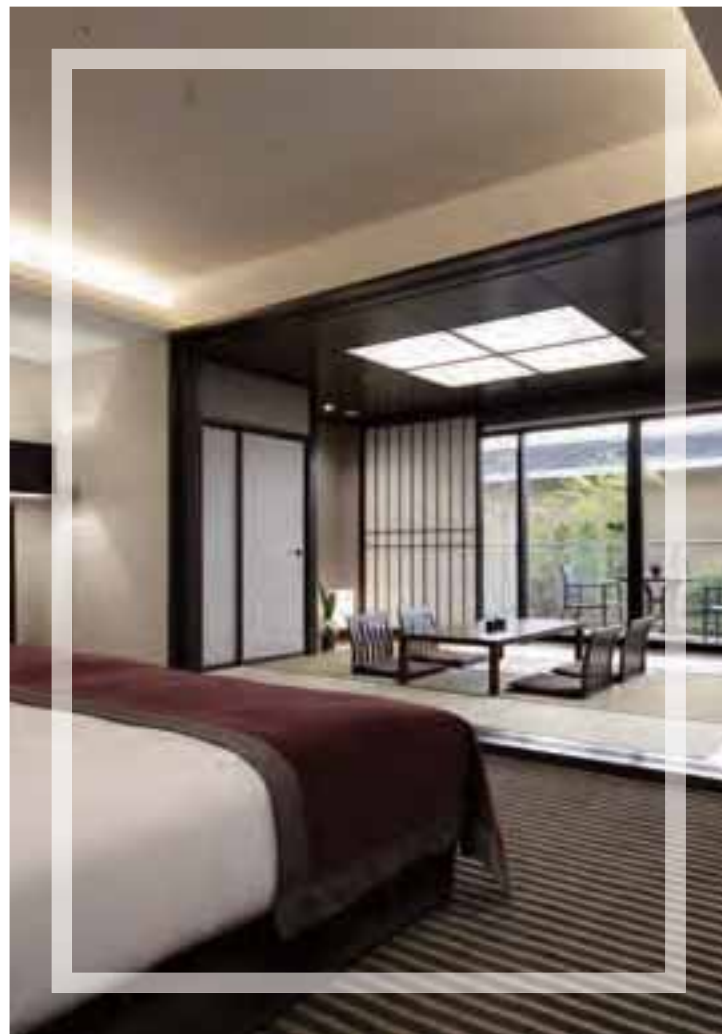
Yes / No	hai / iie はい / いいえ
Good Morning	ohayo (gozaimasu) おはよう(ございます)
Hello	konnichiwa こんにちは
Good evening	konbanwa こんばんは
Goodbye	sayonara さようなら
Thank you	arigato (gozaimasu) ありがとう(ございます)
Excuse me	sumimasen すみません
I'm sorry	gomennasai ごめんなさい
It's delicious	oishi おいしい

Shopping and Eating

How much is it?	Ikura desu ka? いくらですか?
What do you recommend?	Osusume wa nani desu ka? おすすめは何ですか?
What is this?	Kore wa nani desu ka? これは何ですか?
Do you have ○○?	○○ wa arimasu ka? ○はありますか?
I'll have this, please.	Kore o kudasai これをください
Can I pay using my creditcard?	Kurejitto Kādo de shiharai dekimasu ka? カードで支払いできますか?

Sightseeing

Where is the ○○?	○○ wa doko desu ka? はどこですか?	How long will it take?	Jikan wa dore gurai kakarimasu ka? 時間はどれくらいかかりますか?
I want to go to ○○.	○○ ni ikitai desu に行きたいです	Could you please take my/our picture.	Shashin o totte kudasai 写真を撮ってください
Toilet.....	toire トイレ	Can you speak English?	Eigo wa hanasemasu ka? 英語は話せますか?
Station	eki 駅	I lost my ○○.	○○ o nakushimashita ○を失くしました
Bus Stop	basunoriba バス乗り場	Tourist office	kanko annaijo 観光案内所
		Hospital	byouin 病院



Your home away from home, Hyatt Regency Hakone

Pristine mountain forests. World-famous hot springs.
Get away from it all. Relax in luxurious comfort
combined with classic Japanese style and hospitality.

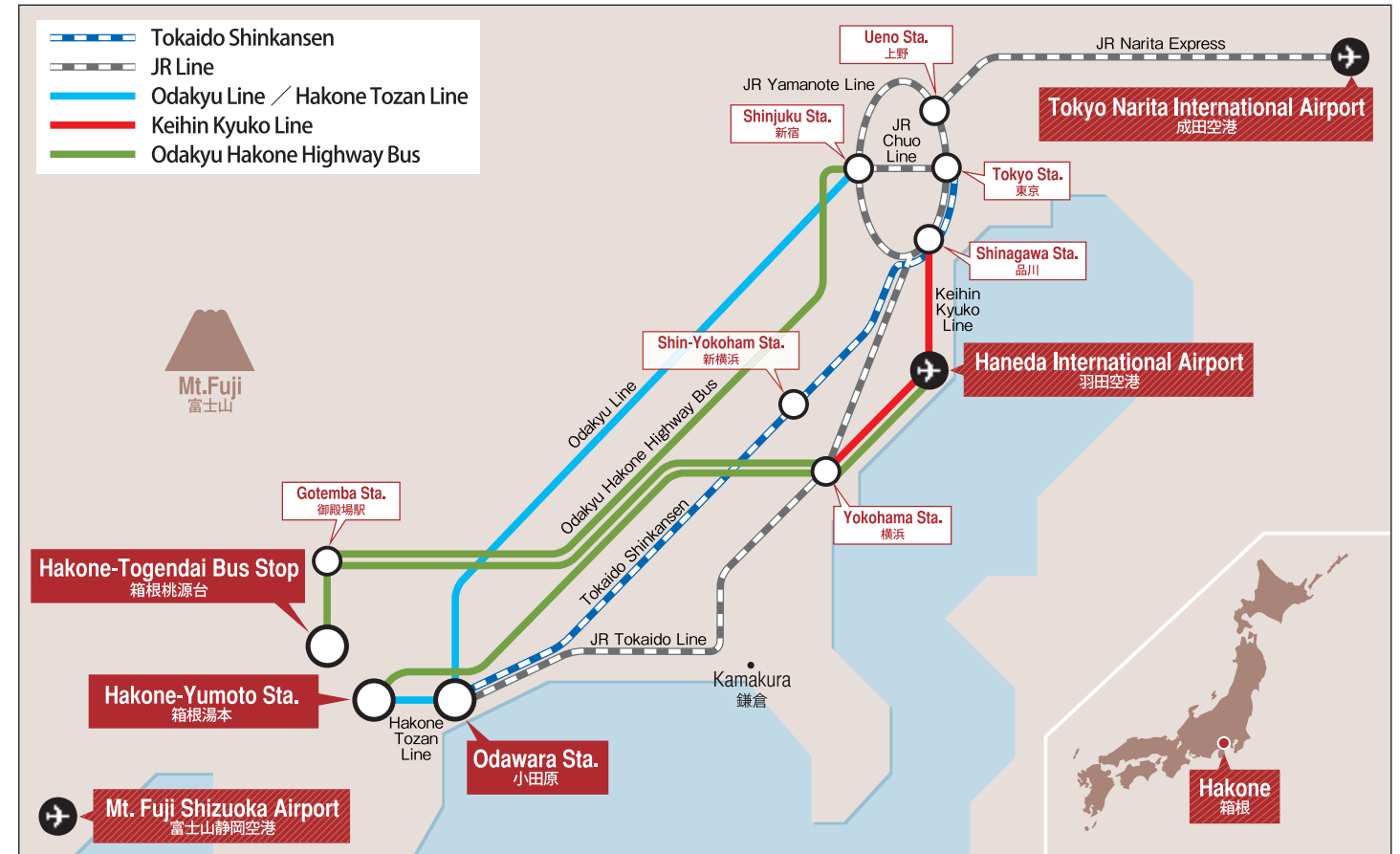


**HYATT REGENCY HAKONE
RESORT AND SPA**
1320 Gora, Hakone-Machi
Ashigarashimogun, Kanagawa
250-0408

Tel. 0460-82-2000
hakone.regency.hyatt.com

HYATT name, design and related marks are trademarks of Hyatt Corporation. ©2015 Hyatt Corporation. All rights reserved.

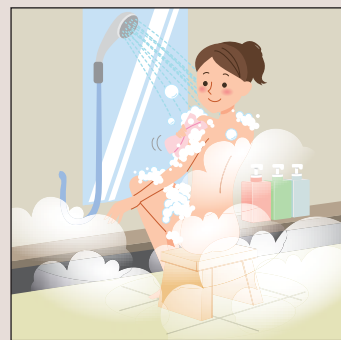
Getting to Hakone



Point 2

Pointers on Bathing Etiquette

These are places to relax and heal your mind and body, so enjoy your time calmly and refrain from any public pool-type antics.



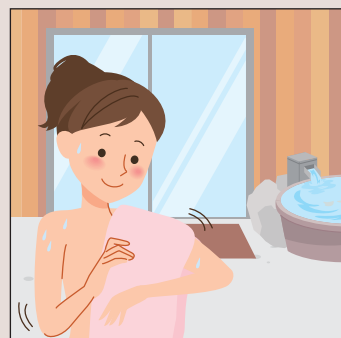
1 Wash before entering the bath!

Wash face and body, then rinse off all soap before entering the tub. Enter naked, without wearing a towel, and enjoy soaking—only soaking.



2 No towels in the tub

Enter the bath slowly, to avoid splashing. As a matter of public hygiene, don't put or let your towel into the water and, in general, follow common-sense manners as well as these etiquette pointers.



3 Dry off after bath and before entering dressing room

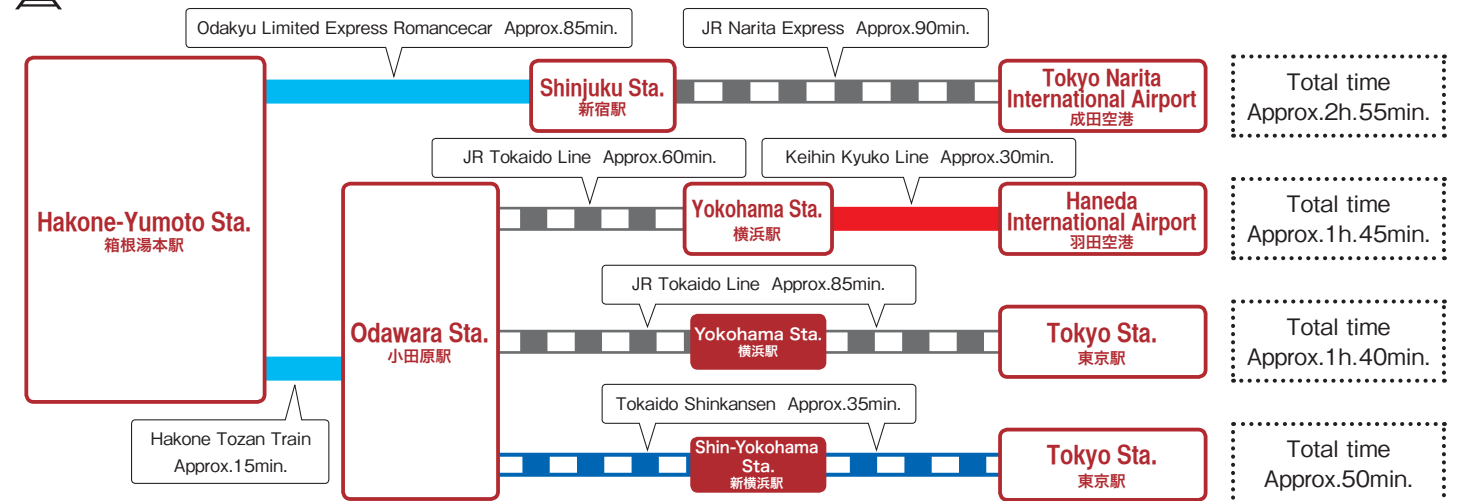
Dry off with a towel in the bathing area, before entering the dressing room, to prevent the dressing room floor getting wet.

Onsen FAQs

- Onsen water can be quite dense and the heat intense, so avoid getting dizzy by limiting your time: don't soak too long (no more than 15 minutes). Immerse yourself up to neck or waist, no deeper, and be sure to hydrate before and after a bath.
- Bath water may have some "floaties" that are natural mineral components, not trash or filthy bits, so don't worry if something tiny comes your way.

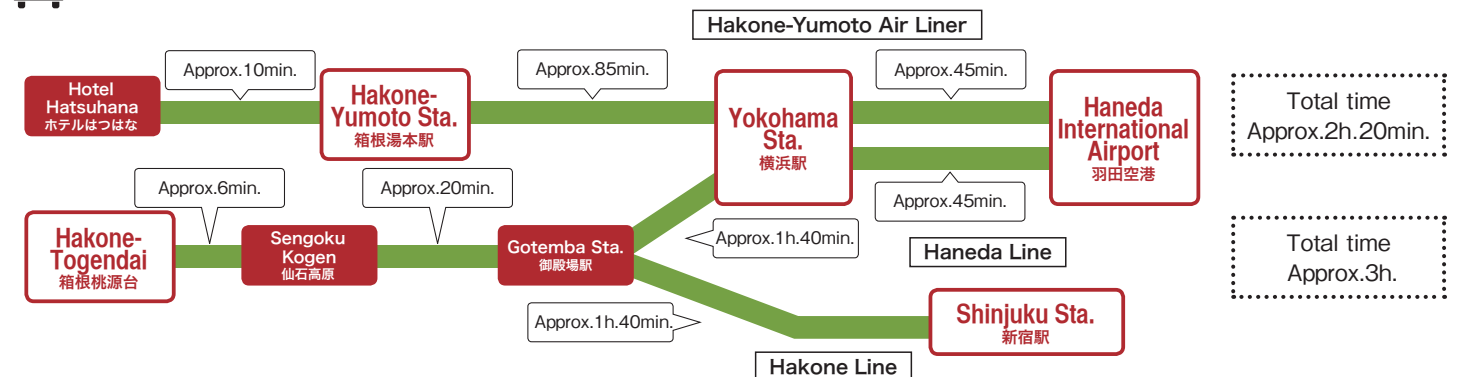


Train



Bus

Odakyu Hakone Highway Bus



*It is an example. Estimated time is subject to change depending on operation and road condition.

Let's Enjoy Hakone's Various Rides!

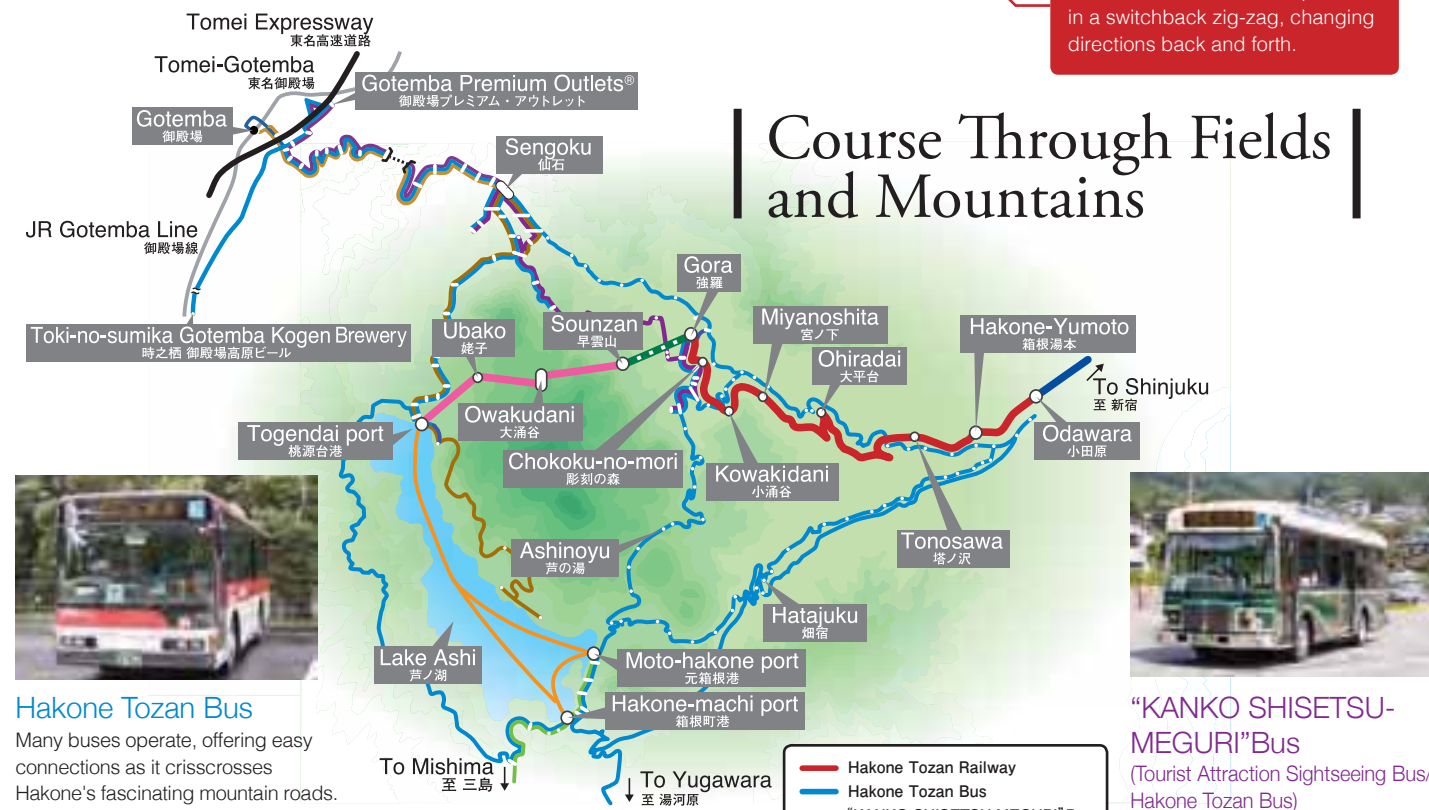


Hakone Tozan Cable Car
Travels at approximately 1.2km to connect Gora and Sounzan stations in 10 minutes.

Hakone Tozan Railway
Travel from Odawara to Gora stations while enjoying surrounding wilderness and breathtaking views from railroad bridges. Also check out Allegra, the new railcar model.



- **Steepest pitch in Japan**
Between Hakone-Yumoto and Kowakidani stations is an 80/1000 gradient, the steepest in Japan for an adhesion railway.
- **Switchback**
The railcar climbs the steep incline in a switchback zig-zag, changing directions back and forth.



Hakone Tozan Bus
Many buses operate, offering easy connections as it crisscrosses Hakone's fascinating mountain roads.



"KANKO SHISETSU-MEGURI" Bus
(Tourist Attraction Sightseeing Bus/ Hakone Tozan Bus)
This comfy way to go sports a fancy, retro-looking design as it circles tour locations like museums, with skylight windows for breathtaking views of sky and trees.



Odakyu Hakone Highway Bus
Offers direct transit from Shinjuku, Tokyo, Haneda Airport and Yokohama to Hakone and Gotemba.

Recommendation See page 8 for Information on great savings with your Hakone Freepass.

① Rides and Nature Course

Hakone-Yumoto Sta. → Hakone Tozan Railway → Gora Sta. → Hakone Tozan Cable Car → Koen-shimo Sta. → Walk → Hakone Gora Park → Walk → Koen-kami Sta. → Hakone Tozan Cable Car → Sounzan Sta. → Hakone Ropeway → Owakudani → Hakone Ropeway → Togendai Port → Hakone Sightseeing Cruise → Moto-hakone Port → Walk → Hakone Shrine → Walk → Moto-hakone Port → Hakone Sightseeing Cruise → Hakone-machi Port → Walk → Hakone Sekisho → Hakone Tozan Bus → Hakone-Yumoto Sta.

※ The ropeway does not operate on second and fourth Thursdays due to maintenance. Replacement bus service is available. Operation is suspended between Sounzan and Owakudani stations due to construction from Jan. 10 to Apr. 14, 2017.

② Hakone Old Tokaido Road Course

Hakone-Yumoto Sta. → Hakone Tozan Bus → Ichirizuka (Hatajuku) → Walk → Amazake Chaya → Walk → Stone-Paved Road → Walk → Cedar Avenue → Walk → Moto-hakone Port → Hakone Tozan Bus → Hakone-Yumoto Sta.

③ Sightseeing Course

Hakone-Yumoto Sta. → Hakone Tozan Railway → Kowakidani Sta. → Walk → Chisuji Falls → Walk → Kowaki-en → "KANKO SHISETSU-MEGURI" Bus → Hakone Garasunomori Museum (Venetian Glass Museum) → "KANKO SHISETSU-MEGURI" Bus → Gotemba Premium Outlets® → "KANKO SHISETSU-MEGURI" Bus → Gora → Hakone Tozan Railway → Hakone-Yumoto Sta.

Whether cruising through the sky, crossing a lake, ascending or descending mountain trails on wheels or ropeway, Hakone boasts exciting ways to go and a chance to experience magnificent nature.



Hakone Ropeway

☎0465-32-2205
www.hakoneropeway.co.jp/foreign/en/

Enjoy the views during a 30-minute ride across four kilometers between Sounzan and Togendai stations, including the amazing Owakudani volcanic valley, Lake Ashi, and magnificent Mt. Fuji.



Fully experience nature's finest from the sky

Owakudani original curry and rice with soft-boiled egg



Owakudani Ekisyokudo
(The restaurant in Owakudani Station)

Enjoy 130-meter view!

Sounzan Station is 757 meters high, and Owakudani Station 1,044, a difference of 287 meters traveled in about 10 minutes. Enjoy the breathtaking view of Owakudani from a gondola height of 130 meters!



The ropeway does not operate on second and fourth Thursdays due to maintenance. Replacement bus service is available. Operation is suspended between Sounzan and Owakudani stations due to construction from Jan. 10 to Apr. 14, 2017.

Enjoy Lake Ashi Cruise

Hakone Lake Hotel

We are proud of "Mayuno-mori" hot spring
Only 3 minute walk from Togendai Station



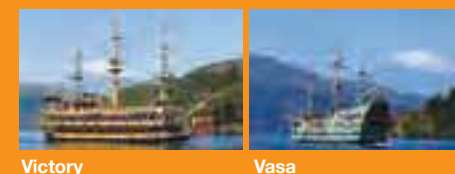
Jan. 23, 2016 OPEN!

Café & Souvenir HOTORIYA
Hakone-machi.port



Three Fine Ships

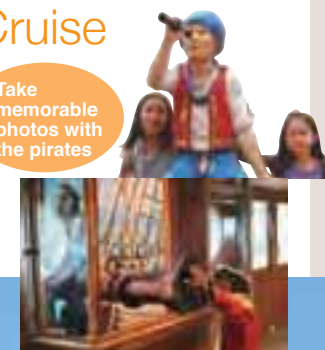
Three different sightseeing ships—the red Royal II, the chic Victory, and the Vasa with its elegant sculptures—take you to the fascinating cruise on Lake Ashi.



Hakone Sightseeing Cruise (Hakone Pirate Ship)

☎0460-83-7722
www.hakone-kankosen.co.jp/foreign/en/
operates between Hakone-machi, Moto-Hakone and Togendai on Lake Ashi. Enjoy the excellent hakone skyline and a panoramic view of Mt. Fuji.

Take memorable photos with the pirates



Recommendation Unlimited ride on the Hakone Sightseeing Cruise and the Hakone Ropeway with Sightseeing Cruise & Ropeway 1Day Ticket / Hakone Freepass



A convenient and economical excursion ticket Hakone Freepass

Enjoy the beauty of Hakone, surrounded by nature.

You can freely board eight different types of transportation in Hakone



All of the transport in the Hakone area which have this mark can be freely boarded.

For more information, refer to the brochure "箱根 HAKONE" available at all stations on the Odakyu line.

<8 different types of transportation>

- 1 Hakone Tozan Line
- 2 Hakone Tozan Cable Car
- 3 Hakone Ropeway
- 4 Hakone Sightseeing Cruise
- 5 Hakone Tozan Bus (in designated zones)
- 6 "KANKO SHISETSU-MEGURI" Bus (Tourist Attraction Sightseeing Bus/Hakone Tozan Bus)
- 7 Odakyu Hakone Highway Bus (in designated zones)
- 8 Tokai Bus Orange Shuttle (in designated zones)

<Sample fares>

	2 days	Adult	Child
From Shinjuku		5,140 yen	1,500 yen
From Odawara Gotemba		4,000 yen	1,000 yen

* Fares may vary depending on the starting station and length of validity. * 3 days ticket also available



<Examples of trips in Hakone using the Freepass>



* An additional limited express surcharge is required to ride the Romancecar.

Take the quick, comfortable Romancecar to Hakone! (Reservation required)



Passengers with a Freepass from Shinjuku to Hakone can board the Romancecar (reservations required) if they purchase the special express ticket (890yen).

<Romancecar limited Express surcharge & Normal fare>

limited Express Surcharge	Odawara	Hakone Yumoto	Normal fare	Odawara	Hakone Yumoto
From Shinjuku	890 yen	890 yen	From Shinjuku	880 yen	1,190 yen

Shinjuku to Hakone-Yumoto: approx. 85 min * Normal express train: approx. 115 min.

* With Hakone Freepass from Odawara and travel between Shinjuku and Hakone-Yumoto, by Romancecar, normal fare and limited express surcharge are required. Please contact staff for more information.

Places where the Freepass is available

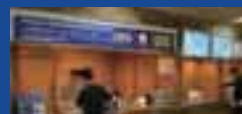
1 Any Odakyu Line station

2 Odakyu Sightseeing Service Center, Shinjuku [Business hours 8:00-18:00]

Odakyu Sightseeing Service Center is special service counter for foreign tourists. English speaking staff are always available (on certain shifts Chinese speaking and Korean speaking staff are also available). They offer information about sightseeing along the Odakyu line in places like Hakone and Enoshima, as well as sales of tickets and Freepasses.

TEL:03-5321-7887
FAX:03-5321-7886

E-mail:welcom@odakyu-dentetsu.co.jp
WEB:www.odakyu.co.jp/english



Odakyu Sightseeing Service Center (Shinjuku)

There is also an Odakyu Sightseeing Service Center in Odawara.
Business hours 8:30-18:00
TEL:0465-24-4101

Point 3

Shrine and Temple Etiquette

Shrines are dedicated to Shinto gods, and temples to Buddhist figures such as bodhisattvas and various incarnations of Gautama. In both of these sacred places you should move and act calmly and speak quietly.



1 Bow slightly before entering a shrine's torii or a temple gate

The ground and space beyond a shrine's torii or a temple gate are considered sacred. Bow slightly before passing through torii or temple gate. As the center of the shrine walkway is the path of a sacred being, visitors should walk slightly to the right or left.



2 Rinse hands and mouth at the chozuya (ritual ablution pavilion)

After passing through shrine or temple entry, you'll find a small pavilion for rinsing hands and/or mouth before you step up to the sacred space occupied by shrine god or Buddhist deity.

Perform the ablution in five simple steps: ① with your right hand, dip the ladle into water and rinse your left hand; ② switch hands and rinse your right hand; ③ take the ladle with your right hand and pour some water into your left palm, and raise that cupped water to your mouth and rinse (taking care that your mouth does not directly contact any part of the ladle); ④ pour water onto your left hand to cleanse it; ⑤ raise the ladle cup straight up, perpendicular to the ground, to let the remaining water pour down the handle and clean it, and then return the ladle to its original spot on the fountain, face down.

3 Offering Ritual: Ring bell and toss money into offering chest

These days coins or bills are used as an offering to deities. In the past, these were made in the form of rice. There is no set amount to offer, so you should decided how much to give according to your wish or prayer, purification ritual, gratitude, or other matter. Temples usually don't have a rope pull, but if there is one, do as in a shrine; if none, make your silent pronouncement and toss gently into the slatted grate atop the offering chest.



4 Shrine Salutation: Bow twice, clap twice, and bow once to greet the deity

Bow deeply before a shrine's outer sanctuary and then make two bows, each at a 90-degree angle. Raise hands to chest center, Western-prayer style, and clap twice at a shrine but not a temple. Return hands to chest center and pray. Lower hands to sides and bow once, at a 90-degree angle. Bow again, deeply, and step back.

5 Shrine and Temple Option: amulet or paper votive

After making an offering, many visitors stop by a building where votives and amulets are sold. They also often draw paper fortunes. An amulet is worn to receive the deity's blessing; a paper votive is read to learn one's fortune. You also have the choice, according to custom, to tie the paper votive on a branch of a tree—on temple or shrine grounds—or you can take it home.



Distinguishing points of a temple

- Temples usually do not have torii but a formal structure of wood, often two stories high, as their gate. Bow slightly before passing through the overhead structure.
- When making offerings or praying at a temple, do not clap the hands. Bow deeply and then bring hands together, chest center (Western-prayer style), as you make your pronouncement.

(with thanks to Hakone Shrine)



Cherry blossoms in Miyagino at Hayakawa Riverside
宮城野の早川堤の桜

春
spring

March

- mid Mountain Burning of Sengokuhara Pampas Grass Fields (Sengokuhara)
- 27 Sengokuhara Yudate Shishimai (Hot Water Lion Dance Ritual)



Mountain Burning of Sengokuhara Pampas Grass Fields
すすき草原山焼き



Sengokuhara Yudate Shishimai
仙石原湯立獅子舞



Azalea at Horaien
蓬萊園のツツジ

July

- 15 Miyagino Yudate Shishimai (Hot Water Lion Dance Ritual) (Miyagino / Suwa Shrine)
- 31 Lake Ashi Festival (Moto-hakone / Lake Ashi)

夏
summer

Hiryu Falls
飛龍の滝



Chisuji falls
千条の滝

August

- 4 Kojiri Ryujin Festival (Kojiri / Lake Ashi)
- 5 Torii Burning Festival (Moto-hakone / Lake Ashi)
- 16 Hakone Daimonji-yaki Bonfire (Gora / Miyagino)

Lake Ashi Festival
湖水まつり



Hydrangeas along the Hakone Tozan Railway
箱根登山電車沿線のアジサイ

Events of the year in Hakone

秋
autumn

Sengokuhara Pampas Grass Fields
仙石原のススキ草原



October

- mid Ashikari Festival (Ashi-no-yu)
- 24 Motomiya Yearly Festival (Summit of Komagatake)

November

- 3 Hakone Daimyo Procession (Hakone-Yumoto)

Hakone Daimyo Procession
箱根大名行列



Autumn Colors of Lake Ashi
芦ノ湖の紅葉



January

- 2,3 Tokyo-Hakone Collegiate Ekiden Relay Race
- 5 Lake Ashi Kosuibiraki (Moto-hakone / Lake Ashi)

February

- 3 Setsubun Festival (Hakone Shrine)

冬
winter



View of Lake Ashi and Mt. Fuji from Onshi-Hakone Park
箱根恩賜公園からの芦ノ湖と富士山

Must See in Hakone

Sengokuhara 仙石原



Sengokuhara Pampas Grass Fields 仙石原ススキ草原

Experience the sensual feel of pampas grass fields at the foot of Mt. Daigatake, renowned for showing Hakone autumn at its best. These golden fields, swaying as one in the fall breeze, are wonderful to see and touch.



Owakudani 大涌谷

Created roughly three millennia ago by steam explosions, "Great Boiling Valley" is an active volcanic zone sourcing Hakone hot springs and a hot tourist spot for Mt. Fuji views. Feel the volcanic power amid natural beauty.

Moto-Hakone, Hakone-Machi 元箱根・箱根町

Hakone Sekisho (Check-point) 箱根関所

Feel the past come alive at this historic checkpoint for foot and vehicle traffic along the Tokaido Road, linking Edo (now Tokyo) and Kyoto in the Edo period. Inspection and tax collection were held in the Edo-style building.



Cedar Avenue 杉並木

Along the historic Tokaido Road stands an avenue of cedars planted to give shade to travelers. Within this unique community are elders over 350 years old you must meet in their cool shadows.

Hakone Shrine 箱根神社

Established amid the Nara period, this shrine was dedicated to all the local gods of Kanto and now is known for obtaining fortune, protection against evil, wish fulfillment, and safe road travel.



Hakone Stone Buddhas 箱根石仏群



Surrounding Shojin Pond is a stately gathering of Buddha sculptures and stone monuments going back seven centuries. Among these sacred figures sits the contemplative Rokudo-jizo, carved out of rock and said to be Kanto's largest Buddha figure.

Miyanoshita, Gora 宮ノ下・強羅



Hakone Gora Park 箱根強羅公園

Stroll around this French-styled park, opened in 1914, and get a clear sense of the design in bilateral symmetry around a fountain. Delights of the four seasons include a teahouse, ceramics, and flowers.



Chisuji falls 千条の滝

Note how this waterfall, three meters high and 25 meters wide, flows quietly and hangs like a reed screen over moss-covered rocks in the upper reaches of Jakotsu River. Enjoy seasonal changes like summer's glowing fireflies and autumn's fiery leaves.

Odawara 小田原



Odawara Castle 小田原城

No trip to Odawara will be complete without visiting this castle built by Omori Yoriharu, regional lord of Nishi-sagami during the Muromachi period (1337-1573). The Hojo Clan, entombed at Soun-ji, succeeded him in ruling from this historic fortress, said to have been the largest in Japan during the Warring States period.



Odawara Fishing port 小田原漁港

In addition to offering soothing sounds of harbor waters, this port serves up a rich sea harvest including horse mackerel and sardine. And being seaside, naturally the harbor has plenty of places to dine on the freshest seafood, possibly lunching on a catch hauled from the ocean by fishermen at dawn.

Hakone-Yumoto 箱根湯本

Hakone Old Tokaido Road 箱根旧街道



Amazake Chaya 甘酒茶屋

Historic teahouse open for business early in the Edo period sits perched on the Hakone stretch of the Tokaido Road, a portion legendary for being the most perilous on the old highway. Don't miss the tangy taste of sweet sake, yet another minor legend dating back to the start of the teahouse as well as naming it.



Ishidatami 石畳

This stone-paved road was built at the beginning of the Edo period to make travel smooth and easy for royals as well as commoners. Present-day travelers can sense the passage of time as they look out on scenery as beautiful and captivating as it was for Edo pilgrims, priest, poets and others.



Soun-ji Temple 早雲寺

Construction of this historic temple was overseen by Hojo Soun, a military commander from the Warring States period (1467-1603). The grounds are done with exemplary taste, containing a traditional stone garden in the dry landscape style as well as a tomb equal to the enduring legacy of five generations of the Hojo Clan.



Yumoto-Kenban 湯本見番

Though it may be hard to believe geisha are not born but made, the daily training here of Yumoto geisha includes dancing, singing, reciting poetry, gracefully pouring drinks without spilling a drop, and more. In addition, seasonal events are held to demonstrate their accomplishments.



Hakone-Yumoto 箱根湯本

Arguably the most vibrant and lively hot spring district in all Hakone, Yumoto will soon convince you of its superior features, like hot springs for day trips, firmly established inns offering traditional hospitality, and streets around the station chock-a-block with restaurants and souvenirs shops.



Owakudani Black Eggs
大涌谷黒たまご

卵を約 80℃の温泉池でゆで、さらに約 100℃の釜で蒸した大涌谷の名物。殻が真っ黒なのは温泉成分の反応による。延命・子育てのお地蔵様にあやかり、ひとつ食べると7年長生きできると言われている。大涌谷では、目の前でゆでる作業を眺めることができる。



Yuba & Tofu

湯葉 & 豆腐

「湯葉」は、豆乳を煮たときにできる皮膜をすくい取ったもの。「豆腐」は大豆の搾り汁、豆乳ににがりを加えて固めたもの。箱根の美味しい水を使って作る豆腐や湯葉は、材料の大豆の甘みと香りが生かされている。



Odawara Chochin
(Odawara lantern)

小田原ちょうちん

細い竹ひごの骨に紙を張り、中にろうそくを立てて作られていた提灯。小田原提灯は江戸時代中期に、箱根の山越えをする旅人のために作られたと言われている。折りたたむことができるうえ、雨や霧に強い。一部に神木を使っているため、魔除けとしても利用された。



Yosegi-Zaiku
(marquetry goods)

寄木細工

さまざまな種類の木材を組み合わせて作る箱根寄木細工。色合いや木目が異なる木片を合わせて幾何学文様を作り、これを大鉋で薄く削り、小箱などに貼り付ける。江戸時代末期より創始され、箱根の伝統的工芸品として現在も、箱やコースターなどさまざまな製品が作られている。



Onsen Manju
(hot spring steamed bun)

温泉まんじゅう

生地に温泉水を使ったり、蒸す過程で温泉の蒸気を使うことから名付けられた温泉地名物の饅頭。お土産用の箱売りだけでなく、バラ売りをしているお店もあるので、旅の途中で、ぜひ蒸し立てを味わってみて！

箱根のグルメやお土産は迷うほど豊富！温泉地ならではの黒たまごや名水を使用した蕎麦、伝統工芸の寄木細工など、どれも必見です。

Hakone & Odawara Gourmet Foods & Good Goods

箱根のグルメ&お土産



Soba (buckwheat noodles)
そば

約 300 年前から存在していたという日本の伝統食。ソバの実を挽いて作る麺は、豊かな香りとほどよい歯ごたえが楽しめる。そばの決め手は水。箱根には、良質の水が湧き出て、これを使用しているので一段と美味しく、人気がある。

Umeboshi
(pickled plums)

梅干し

梅の果実を塩で漬け込み、天日干しにしたもの。小田原北條時代より戦時の携帯用食品として用いられ、徳川時代には参勤交代の武士や箱根越えの旅人に重宝されていた。小田原特有の紫蘇巻梅干しなどもある。



Kamaboko
(fish cake)

かまぼこ

「かまぼこ」は、白身魚のすり身を練り、加熱したもの。弾力のある食感と風味豊かな味わいが特徴。交通が不便だった江戸時代は、小田原周辺でとれた新鮮な魚を使った保存食の「小田原かまぼこ」が、箱根の旅館で食されていた。その美味しさが口伝えで全国へ広まったそう。



Seafood Cuisine

海鮮料理

相模湾と駿河湾の間に位置する箱根・小田原では、新鮮な魚介類が豊富にとれるので、寿司や活魚料理などの海鮮料理が充実している。小田原には漁港があるので、とれたての魚介を楽しめる。

Wakasagi (pond smelt)

わかさぎ

芦ノ湖に生息する淡水魚わかさぎは、「かながわの名産百選」に選ばれ、箱根の特産品の一つとなっている。古くから郷土料理に使用され、今も芦ノ湖畔のお店で、フライや甘露煮など、さまざまなメニューが食べられる。



Seafood Gourmet Theme Park Odawara Hayakawa Gyoson

小田原早川漁村

Go Portside
for Good Food
and Fun!

Oyster
Fest!



海鮮丼
Seafood rice bowl

浜焼
Hamayaki
("shore grilled," a quick bite)

地魚
Local fish

お土産
Souvenirs

しらす
Fried shirasu
(whitebait fish)

1F
Aburiya
fishermen's hamayaki
☎ 0465-24-7804 ■ Hours: 10:00-22:00
All you can eat and drink (80 min.)
general, ¥3,000;
seniors (age 65 and up),
¥2,500; elementary school,
¥1,700; pre-school, ¥1,200;
age three and younger, free

1F
Umaimono Yatai
(vendors)
■ Hours: 12:00-16:00

2F **Kaisendonya Kaishu**
(seafood rice bowl restaurant)
■ Hours: weekdays, 11:00-17:00; Sat., Sun., hol., 10:00-17:00

2F **Gyoko no Shirasu Ichiba**
(house specialty, whitebait)
■ Hours: 11:00-16:00

1F
Kaneyoshi
souvenir shop
■ Hours: 10:00-17:00

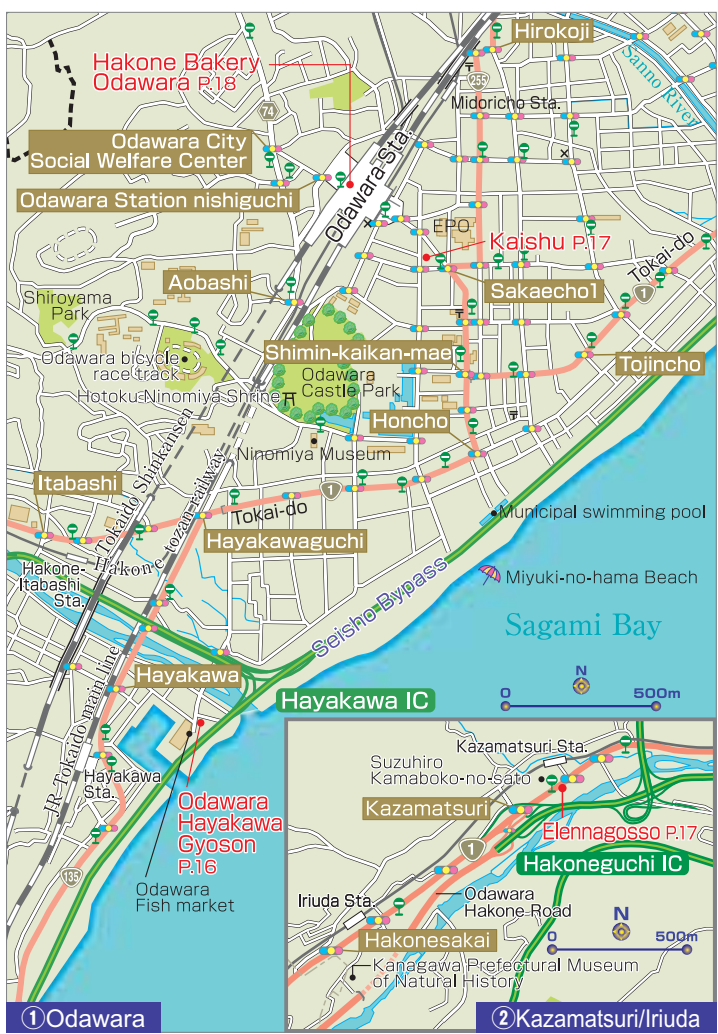


<http://gyoson.com>

〔 Odawara Hayakawa Gyoson 〕
☎ 0465-24-7800
1-9 Hayakawa, Odawara-shi
■ Hours: 10:00-22:00, daily (varies by branch)
■ Access:
5 min. by taxi from Odawara Station
5 min. on foot from Hayakawa Station
(JR Tokaido Line)
15 min. by taxi from Hakone-Yumoto Station

〔 Daini (Second) Gyoson 〕
☎ 0465-23-3360
1-11-2 Hayakawa, Odawara-shi
■ Hours (open daily):
weekdays, 10:00-17:00;
Sat., Sun., hol., 10:00-22:00

Reservations
accepted



1
2
A thrilling adventure in the treetops,
more than 10 meters high.
Admission (including insurance):
adults (18 or over) ¥3,600; children
(ages 6-17) ¥2,600. Family discounts
available.

Thrilling Adventure in the Forest
An outdoor park filled with trees whose origin is in France. Zip among the treetops in our special safety harness and enjoy 40 different activities. Our two-hour course can be challenged by first-grade elementary school students and above. Even adults will appreciate the sense of accomplishment.

Forest Adventure Odawara
フォレストアドベンチャー・小田原
☎ 080-4330-4030
■ 4391-1, Kamenokouyama, Kuno, Odawara, Kanagawa
■ 9:00-17:00 ■ Closed on Thursdays
■ 15-minute bus ride from Odawara Station (JR, Odakyu Line)
■ <http://www.forest-aventure.jp>



1 Our outstanding Lobster Rice Bowl is ¥1,880 (plus tax).
2 We offer a wide variety of 40 different types of seafood rice dishes, many of which you won't find elsewhere.

Specialty Rice Bowl Restaurant Run by a Local Fish Dealer
Our specialty restaurant offering seafood rice dishes is a hot topic on TV and in magazines. A fish dealer directly manages us, so you'll be delighted by both the quantity and the excellent taste. Enjoy discovering your favorites from 40 different varieties of seafood rice dishes. Whether you enjoy a rice bowl, sashimi or tempura, you won't forget its distinct flavor.

Kaisendonya Odawara Kaishu
海鮮丼屋 小田原 海舟
☎ 0465-24-2237
■ 1-14-55 Sakaecho, Odawara, Kanagawa
■ 11:00-20:00
■ Open daily
■ 3-minute walk from Odawara Station (JR/Odakyu line)

Restaurant



Buffet : Elennagosso

In the morning, Elennagosso's chefs go to the local fish market and select the freshest seafood available. They also mainly use vegetables from local farmers grown using fertilizer made from leftover fish. Enjoy as much of our local delicacies as you like at this sustainable restaurant's all-you-can-eat buffet.

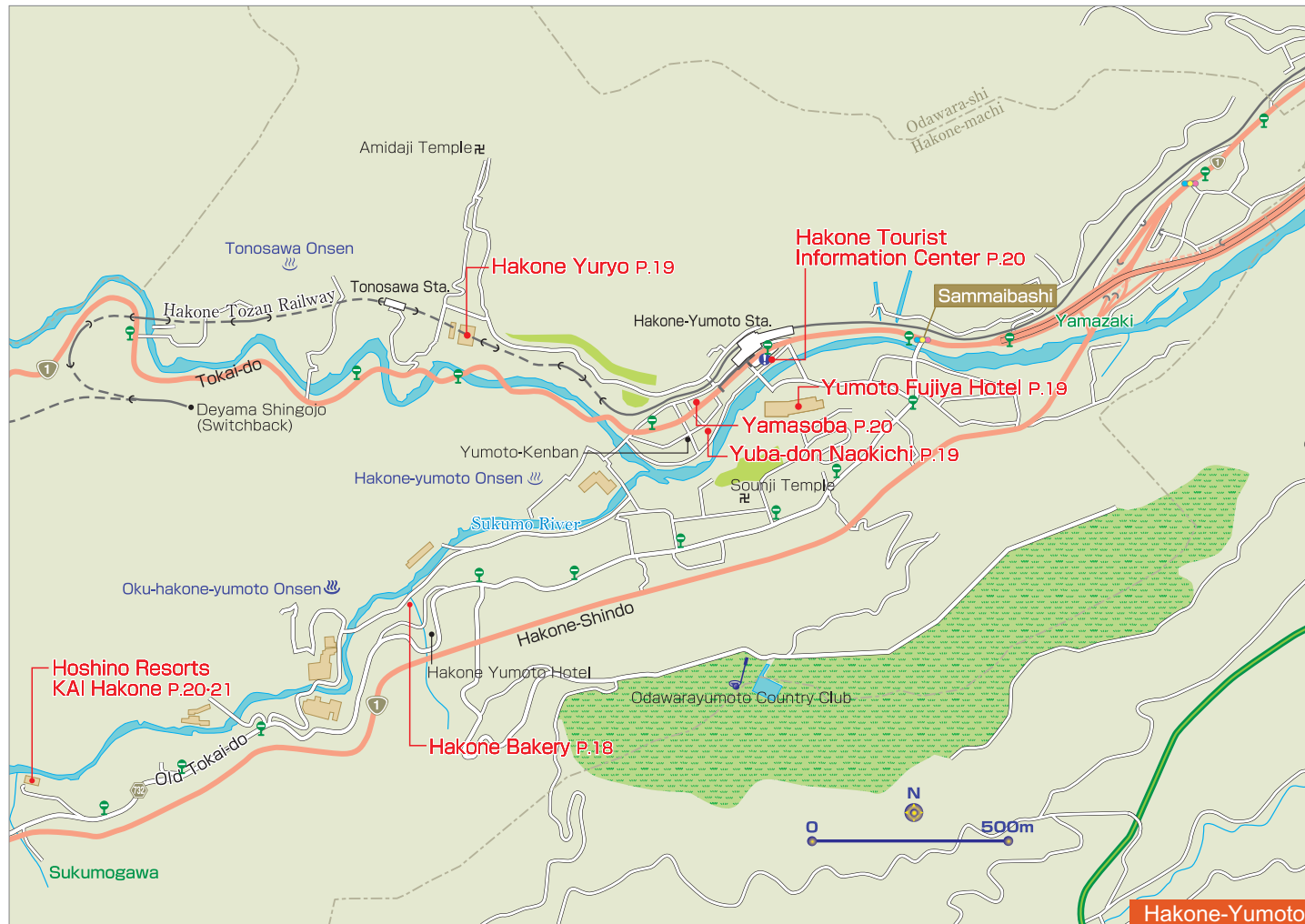


Buffet : Weekdays
● Lunch / 11:00~14:45 ¥1,900
● Tea Time / 15:00~17:00 (snacks&sweets) ¥1,300

Weekends and holidays
● Brunch / 9:30~11:00 ¥1,500
● Lunch / 11:00~17:00 ¥2,200
● Child / age4~12 Half price
● Child / 3 and under free



245 Kazamatsuri, Odawara city, Kanagawa, Japan
■ Short walk from Kazamatsuri Sta., 10min drive from Odawara Sta.
■ 7 days a week.
■ Payment by credit cards accepted. <http://www.kamaboko.com/english/>



1 Three-minute walk from Hakone-Yumoto Station. Photo op: Ajsai Bridge, in front of the hotel.
2 Discovered in the eighth century, Yumoto Hot Springs has the longest history of Hakone's 17 major hot springs.

Comfort Zone Deep in Nature

Rooms with a view of mountains or of Hakone's funicular train are inviting, as are dining options like izakaya or restaurants serving seasonal-focused Japanese, Western, and Chinese cuisine. What's more, refreshing immersion awaits you in outdoor open-air bathing set amid nature; large public indoor bathing, with room to move at ease; and private family bathing, all renowned for beautifying the skin.

Yumoto Fujiya Hotel 湯本富士屋ホテル

☎ 0460-85-6111 MAP-P18
 ■ 256-1 Yumoto, Hakone-machi, Ashigarashimo-gun, Kanagawa
 ■ Lunch: 11:30-14:00 (till 14:30 on Sat./Sun./holidays); Dinner: 18:00-20:30
 ■ Open daily ■ 3-minute walk from Hakone-Yumoto Station (Hakone Tozan Railway) ■ <http://www.yumotofujiya.jp/en/>



1 Each Yuba-don(¥980) is individually boiled with egg, so this dish takes time and effort to prepare.
2 You can enjoy the scenery of the clear stream from our store windows.

Experience, delicious local dish called Yuba-don

Fresh Japanese yuba (tofu skin) is made by lifting the heated skin from soy milk with skewers. Our yuba, made from the finest quality soy beans, is boiled together with bonito broth, and layered with beaten eggs over rice. Our soft, delicious Yuba-don is a masterpiece of which everyone should taste at least once in life. We also have a free footbath at the front.

Yuba-don Naokichi 湯葉井 直吉

☎ 0460-85-5148 MAP-P18
 ■ 696 Yumoto, Hakone-machi, Ashigarashimo-gun, Kanagawa
 ■ 11:00-18:00(L.O.)
 ■ Closed on Tuesdays(Open on Tuesday holidays)
 ■ 3 minutes walk from Hakone-Yumoto Station(Hakone Tozan Railway)

Famed store under Hakone Yumoto Hotel management

Raclette cheese toast (Hakone Yumoto shop shown. Not available at Odawara shop.)

Savor the rich buttery flavor of this renowned and beloved croissant as well as our special breads like soy-melon buns, raisin rye bread (aka pain de seigle aux raisins), and more.

Hakone Bakery
 184 Yumoto Chaya, Hakone-machi, Ashigarashimo-gun, Kanagawa
 ☎ 0460-85-8876 Free parking (10 cars)
 9:00-17:00 (last order, 16:30); Open daily

Hakone Bakery Odawara
 Hakone Bakery Odawara Station Shop ☎ 0465-20-1126 7:00-21:00
 Odawara Station, Nishi-guchi area, in front of Tokaido Shinkansen ticket wicket

森の温泉。森のめし。箱根温泉

Hakone Yuryo — A hot spring resort that's easily accessible from Tokyo as a day trip

HOT SPRINGS

Large communal baths: "Honden Yurakuan Oyu"
 Indoor baths, open-air baths, pottery baths, and sauna facilities
 Adults (including children of junior high school age or older): 1,400 yen
 Children (4-12 yrs.): 700 yen
 Opening Hours: Open 365 days a year (the resort may occasionally be closed for maintenance work)
 Weekdays: 10:00-21:00 (last admission at 20:00)
 Saturdays, Sundays and public holidays: 10:00-22:00 (last admission at 21:00)

Private open-air baths: "Hanare Yuya Kaden"
 19 private rooms available
 Reservations can be made by telephone (0460-85-8411) up to one month in advance.
 Fee for private room use (per room, per 60-minute period):

Type 1 (7rooms)	Type 2 (8rooms)	Type 3 (4rooms)
3,900yen	4,900yen	5,900yen

 Opening Hours: Open 365 days a year (the resort may occasionally be closed for maintenance work)
 Weekdays: 10:00-21:00 (last admission at 20:00)
 Saturdays, Sundays and public holidays: 10:00-22:00 (last admission at 21:00)

Hakone Yuryo can be reached easily from both Haneda Airport and Narita Airport, and is situated in one of Japan's most outstanding hot spring resort areas. Experience a comfortable, enjoyable train journey on the Odakyu Line!

Limited Express "Romancecar" Odakyu Line + Hakone Tozan Line Approx 115 minutes
 Approx 90 minutes Narita Airport
 Approx 45 minutes Haneda Airport
 Approx 130 minutes Yokohama Sta. Hakone-Yumoto Airliner (Highway express bus)

1 The Lobby Lounge like a gallery is furnished with Hakone Yosegi Zaiku .
 2 Image of the new room with an open-air bath, opening on 25th of February, 2017
 3 As the main dish, we offer premium beef *Meiji Sukiyaki* hot pot flavored with miso.



Luxury Riverside Hot Spring Inn

Hoshino Resorts KAI Hakone is a small luxury Japanese inn located on the banks of a mountain stream just off the Hakone Kyukaido. Reimagined with modern edge, 8 rooms on the top floor will reopen on February 25th, 2017. Two of the brand new rooms are designed for couples to enjoy the private open-air bath at the terrace. The traditional Hakone's handcrafts, Yosegi-Zaiku are used as the room's decorations. At the dining, a series of plates with Japanese seasonal ingredients of utter visual are served in a Kaiseki style dinner. Enjoy the hospitality and the nature surrounding ryokan.

Hoshino Resorts KAI Hakone
 星野リゾート 界 箱根

☎ 0570-073-011 P18

- 230 Yumoto Chaya, Hakone-machi, Ashigarashimo-gun, Kanagawa
- An 8-minute bus ride followed by a 5-minute walk from Hakone-Yumoto Station (Hakone Tozan Railway)
- <http://www.hoshinoresorts.com/en/resortsandhotels/kai/hakone.html>



Hot Spring in KAI Hakone

Blissful bathing and dining. Luxury experience.

KAI is a collection of ryokan, traditional Japanese inns, all with fewer than 50 rooms, that boast soothing hot springs and Japanese-style interiors.

Be enchanted staying at our authentic ryokan.

Experience the spirit of this country's traditional hospitality---"Omotenashi"



Hot soba noodles topped with Japanese yam, wild vegetables, and egg yolk

Yamaimo Soba
¥1,180

Peak Taste You've Known and Loved for Half a Century

Yamatake Soba
¥1,300

Tendon (regular)
¥1,320

Healthy soba noodles served cold, heaped with grated daikon and mushrooms

Rice bowl loaded with deep-fried jumbo shrimp, fish, and fresh veggies

Hakone Jinenjo YAMASOBA
 TEL : 0460-85-7889
 704 Yumoto, Hakonemachi, Ashigarashimo-gun, Kanagawa
 11:00 ~ 19:00 Closed:Thursdays
 No Parking Credit Card not accepted
<http://www.yamasoba.com>



Hakone Tourist Information Center

Obtain the latest information of the whole Hakone area, such as sample trip plans and the best spots of the season here. English-speaking staff is always waiting to help plan your trip around Hakone.

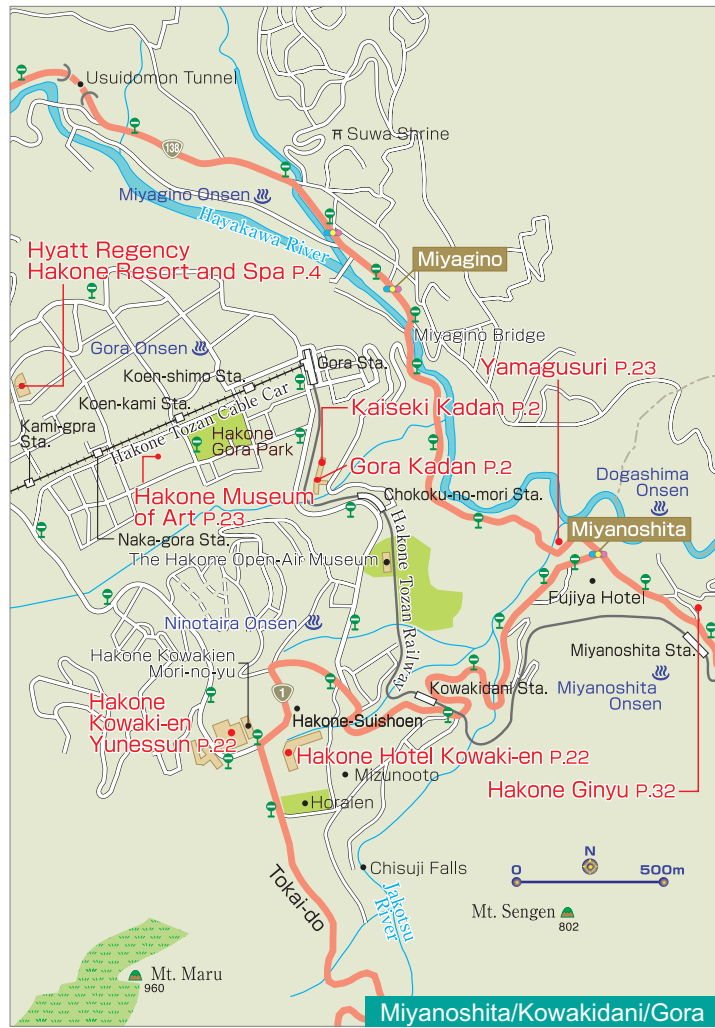
Hakone Tourist Information Center
 Open hours 9:00~17:45 (open every day)
 TEL 0460-85-5700



Reservations
 0570-073-011 / <http://www.hoshinoresorts.com/en/>



Hoshino Resorts



1 You can enjoy the luxurious and relaxing hot spring experience in our suite with private open-air bath room.
2 The historic garden was landscaped in 1914, as a private garden of a leisure home owned by MITSUI who is a business tycoon in Edo period.

Experience Genuine Four Seasons of JAPAN

Hakone Hotel Kowaki-en is a part of Hakone Kowaki-en which consists of three accommodations and Spa amusement park. The Hotel boasts a vast expanse of beautiful Japanese garden in front of the lobby. You can enjoy Cherry Blossoms in Spring, Twinkle Fireflies Dancing in Summer, Colored Maple Leaves in Autumn and Sparkle White Snow in Winter. A Warm welcome awaits you at Hakone Hotel Kowaki-en.

Hakone Hotel Kowaki-en 箱根ホテル小涌園
 ☎ 0460-82-4111 MAP P.22
 ■ 1297 Ninotaira, Hakone-machi, Ashigarashimo-gun, Kanagawa, Japan
 ■ 20 minutes by bus from Hakone-Yumoto Station (Hakone Tozan Railway)
 ■ <http://hotel.hakone-kowakien.com/en/>



1 The museum's classic Japanese garden, a Registered Monument of Japan, has one of the country's finest and most diverse moss gardens.
2 Explore priceless objects have art of historical and aesthetic value, including the important cultural asset of Male figure of Haniwa from ancient Japan.

Experience the Beauty of Japan

Aesthetic pleasures await you in oldest art museum of Hakone. Stroll a Japanese garden after viewing classic pottery and tea-ceremony vessels. Or relax from a seated garden view in a tea house serving green tea and a seasonal sweet. Bring this issue and enjoy entry-fee discounts for adults (¥100) and for students (¥50).

Hakone Museum of Art 箱根美術館
 ☎ 0460-82-2623 MAP P.22
 ■ 1300 Gora, Hakone-machi, Ashigarashimo-gun, Kanagawa ■ Apr.-Nov.: 9:30-16:30 / Dec.-Mar.: 9:30-16:00 (last admission 30 mins. before closing) ■ Closed Thurs. (open if a holiday / Nov.: open daily) ■ Entry fees: adults, ¥900; high school and university students, ¥400; junior high school students and younger, free ■ A minute's walk from Koenkami Station (Hakone Tozan Cable Car) ■ <http://www.moart.or.jp/hakone/en>

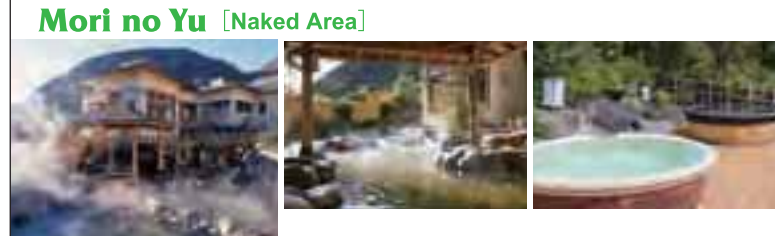
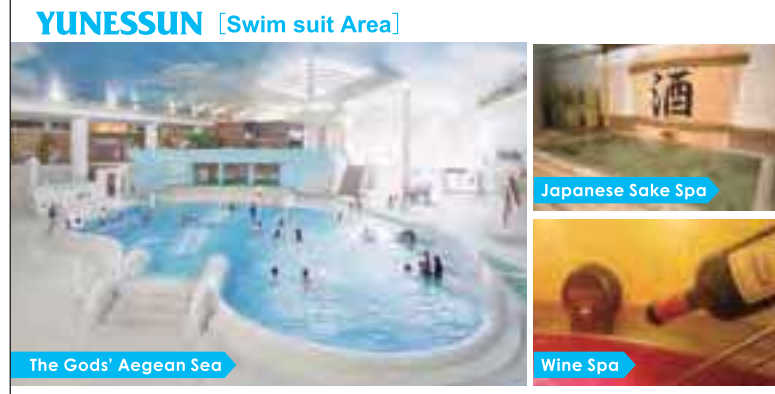


Delicious Traditional Japanese Food

Japanese yam is a beloved traditional food from ancient times. Its sticky texture is a perfect match for Japanese rice! Experience the real thing for traditional Japanese cuisine and culture with our fine set menu: tofu, dried fish, and miso soup. Consult with us as well for halal and vegetarian menu. What's more, bring this magazine when you dine at Yamagusuri and get a gift of yosegi-zaiku (parquetry goods).

Hakone Jinenjonomori Yamagusuri 箱根 自然薯の森 山薬
 ☎ 0460-82-1066 MAP P.22
 ■ 224 Miyanoshita, Hakone-machi, Ashigarashimo-gun, Kanagawa
 ■ 7:00 - 21:00
 ■ Open daily
 ■ 9 minutes walk from Miyanoshita Station (Hakone Tozan Railway)

Let's enjoy unique spas!! YUNESSUN Spa Resort



Hot Spring Amusement Park and Spa Resort
 Hakone Kowaki-en YUNESSUN Spa Resort has so many kind of Spas. You can have fun at this all weather facility even on rainy days. You'll find an array of fun Spas here. And we have many kind of shops and restaurants, you can enjoy all day.

SPECIAL COUPON 000-2161
LET'S HAVE FUN YUNESSUN SPA RESORT!!
 > You can rent a swim suit **50%OFF**
 > You can use free towel(1set for 1person)

	Adult	Child
Combined (YUNESSUN & Mori no Yu)	¥4,100▶¥2,800	¥2,100▶¥1,500
YUNESSUN (Swim Suit Area)	¥2,900▶¥2,000	¥1,600▶¥1,100
Mori no Yu (Naked Area)	¥1,900▶¥1,300	¥1,200▶ ¥700

This is discount ticket, please show this at the front desk. Valid: 2017/12/31

Transportation (By bus and train)
 • From Odawara Sta., take a bus bound for "Moto-Hakone-Ko/Hakone-Machi," and get off at "Kowaki-en" (approx.40min.)
 • From Hakone-Yumoto Sta., take a bus bound for "Moto-Hakone-Ko/Hakone-Machi," and get off at "Kowaki-en" (approx.20min.)
Business hours [YUNESSUN] 9:00~19:00 / [Mori no Yu] 11:00~20:00
 Parking fee ¥1,200/day Senior (60 and over) and disabled is discounts. For more information, please contact to us. Child Admission Age starts from 3years old to elementary school age.

Hakone Kowaki-en YUNESSUN
 Tel.0460-82-4126
 1297, Ninotaira, Hakone-machi, Ashigarashimo-gun, Kanagawa-Japan 250-0407
<http://www.yunessun.com/>

Point 4 Japanese Customs for Rooms and Meals

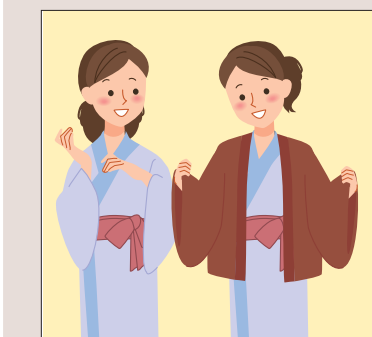
Please take particular care for characteristic Japanese culture and customs when eating meals or staying at *ryokan* (Japanese-style inns) which have a traditional Japanese atmosphere.



1 It is standard to remove your shoes in the entry hall before entering a room.
 In the front entryway take off your shoes while facing forwards and then enter the room. You should then bend down and turn your shoes to face the other way, aligning them neatly.



2 Bowls should be held in your hand when eating.
 The bowl containing your rice as well as your soup bowl and other bowls should all be held in your hand while eating from them. Don't squeeze the chopsticks too strongly, hold them vertically, cross them over, or stab your food with them.



3 Try wearing your yukata around the ryokan.
 A yukata is a traditional type of Japanese clothing, often worn after bathing or while sleeping. Be sure to cover your body first with the right-hand side, then left-hand side. When staying at a ryokan, you're welcome to wander around in yukata.

Simple Facts about Japanese-Style Rooms and Tatami Mats
 ■ A Japanese-style room is one laid with tatami mats. One appealing feature is the rooms may be used for many purposes, such as a living room, bedroom, or guest room. A single tatami mat is roughly 180 cm x 90 cm, and is counted as 1 'jo' (a specific Japanese counter for tatami mats).
 ■ Tatami mats provide Japan-style flooring. The face of tatami mats is woven grass, meaning they are highly absorbent, warm in winter, and cool in summer. Their fragrance also has a relaxing effect.

Make your trip
more
enjoyable!

History of Hakone, Odawara 歴史

In Hakone, the Hakone volcano has produced caldera and onsen (hot springs) over many long years. It is an area overflowing with mystery and history, where countless legends and the vestiges of many great people still live on.

<Nara Period to the Warring States Period>

Hot springs were opened in the Nara period (around 700AD). The hot springs were related to the Late Hojo Clan of the Warring States period.

According to one theory, the hot springs of Hakone were first opened in the Nara period (around 700AD). According to folklore of the time, "When 'Kiyosada', a priest of Kaga and disciple of Taicho, came to Hakone-Yumoto to pray and study, the hot springs began to flow, and the small pox which had been afflicting the people was cured". During the Warring States period (from around 1495 AD onwards), the Late Hojo Clan ruled as daimyos over the whole Kanto region for five generations from their base in Odawara Castle. Odawara prospered as a center of politics, economy and industry. Soun Hojo, the founder of the clan, was enshrined in 'Soun-ji' in Hakone-Yumoto, so military commanders would often visit Hakone to pay homage. The source of the springs near Soun-ji that the military commanders bathed in still remains, and the hot water there still continues to flow.



Odawara Castle was the ruling castle for five generations of the Late Hojo Clan from around 1496 onwards. It is now a castle ruins park, where beautiful views can be seen from the castle towers.

A statue of Soun Hojo at the west entrance of Odawara Station.



The 'Taiko Stone Bathing' in the Miyanoshita hot spring. This is the remains of the open-air bathtub created by Hideyoshi to heal his troops, and is no longer used for bathing.

<Warring States Period to Edo Period>

A place of healing for troops during Hideyoshi Toyotomi's attack on Odawara (1590). Its name come to back be known nationwide.

The 'Battle of Odawara' (1590) was daimyo Hideyoshi Toyotomi's final battle in his unification of the country. Hideyoshi spent two months fortifying Ishigakiyama in order to capture Odawara Castle. It is said that during the protracted war, Hideyoshi built a stone bathtub that utilized the hot springs of Jakotsu river in Miyanoshita, and used it to heal his soldier's wounds, as well as bathing in it himself.

In addition, at the height of the war, Hideyoshi held a tea ceremony and SEN no Rikyu, Ieyasu Tokugawa, Masamune Date, and Yodogimi all visited, allowing the area to prosper. It is said that Hime-no-mizu, a famous mineral water from Ohiradai, was used by Hideyoshi Toyotomi for the tea ceremony, and that the daughters of the Late Hojo Clan and the Toyotomi Clan used it as a face lotion. From then on, many women visited Hakone in order to follow their example.

<Edo Period to Meiji and Taisho Periods>

Transportation networks arranged by Ieyasu Tokugawa and Yukichi Fukuzawa, and the development of popular tourist attractions.

In 1603, Ieyasu Tokugawa, who set up the Edo shogunate, began work on the Tokaido highway. A hot spring health resort was born in Hakone, and it became famous for the '7 Hakone Hot Springs'. However, the inaccessibility of the hilly roads became known as the most perilous part of the Tokaido, and then in 1626 the shogunate established the 'Hakone Checkpoint' in order to secure defence of Edo.

From the Meiji period onwards, the 'Hakone Checkpoint' was abolished, and development of the area progressed as a location for recuperation and sight-seeing. Yukichi Fukuzawa enjoyed visiting the hot springs of Hakone, and after talking to local sympathizers, he assisted with the development of National Route 1 linking Odawara and Hakone. In 1877, Fujiya Hotel was opened as a hotel aimed at overseas visitors. Railroads were also established thanks to Odakyu Electric Railway, and the area developed as a popular, accessible tourist location.



The main role of the Hakone Checkpoint was checking for "letting in guns and letting out women". They particularly kept out a watchful eye for carried weapons, and wives of daimyos fleeing from Edo where they had been forced to live and held hostage.

※歴史や伝承の解釈には諸説あります。There are various theories regarding the history and the traditions.

Breathtaking Views of Mt. Fuji

Mt. Fuji, symbolic home to Japanese people, became a World Cultural Heritage site by virtue of its beauty and being a source of spiritual as well as artistic inspiration. Experience all the joys of uniquely viewing Japan's sacred peak from Sengokuhara and Moto-Hakone areas.



from Mt.Kintoki



from Owakudani



from Lake Ashi

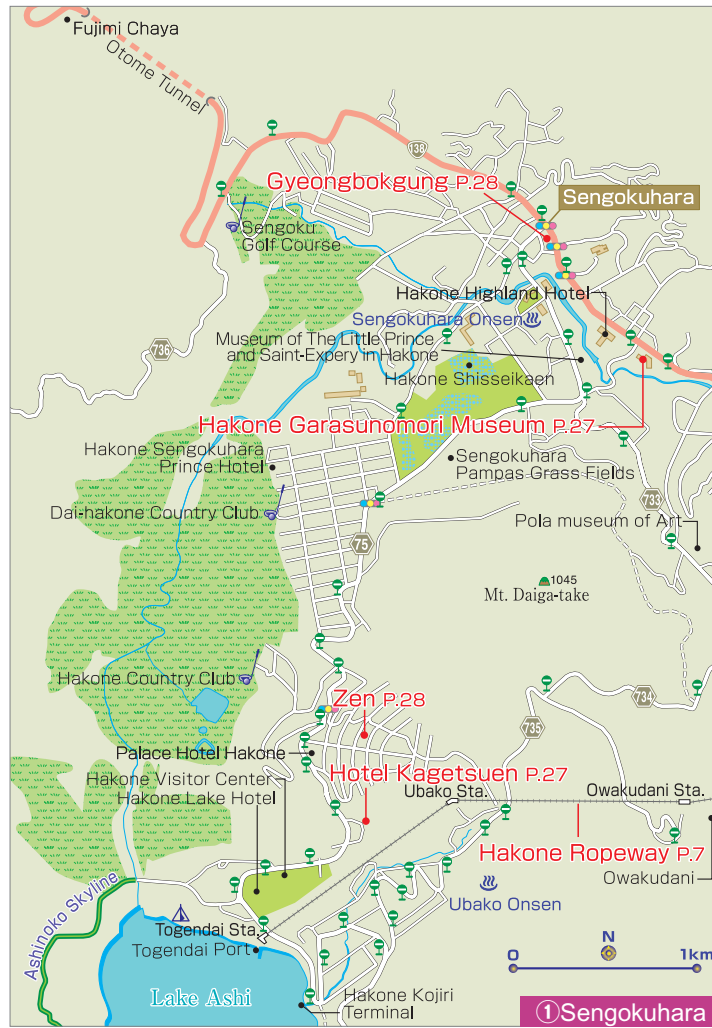


C



D

from Mt.Taikan



1 Many exhibitions are held, so you'll always find something interesting even with repeat visits.
2 Also attractive is our cafe-restaurant, with professional Italian singers performing *canzone*.

Enter a Magical World of Glass

When you walk down the corridor of sparkling crystal leading into our museum, reminiscent of a medieval noble's house, you enter a world of Venetian glass spanning the work of artisans from the 15th-19th centuries to today. Garden trees decorated with tens of thousands of crystal glass beads shine dazzlingly.

Hakone Garasunomori Museum 箱根ガラスの森美術館

☎ 0460-86-3111

MAP-P26 ①

■ 940-48 Sengokuhara, Hakone-machi, Ashigarashimo-gun, Kanagawa ■ 9:00-17:30 (last admission: 17:00) ■ Open daily ■ Admission fees: adults, ¥1,500; high school and university students, ¥1,100; primary and junior high students, ¥600. ■ 25-minute bus ride from Hakone-Yumoto Station (Hakone Tozan Railway) ■ <http://www.ciao3.com>



1 From the museum observation gallery perched atop a small hill, you can enjoy an emblematic view of Japan created by Lake Ashi and Mt. Fuji.
2 Maiko by Sho Ishimoto

Nihonga Museum with a Magnificent View

The museum overlooks Lake Ashinoko, and on a clear day you can see Mt. Fuji. There are art exhibitions showcasing various themes centering on Nihonga selected from 4,000 pieces in our collection, ranging from works by great masters to fresh young talent. Enjoy tea served in artistic ceramics at the tea lounge. Hot sandwiches and pizza are also available.

Hakone Ashinoko Narukawa Art Museum 箱根・芦ノ湖 成川美術館

☎ 0460-83-6828

MAP-P26 ②

■ 570 Moto-hakone, Hakone-machi, Ashigarashimo-gun, Kanagawa ■ 9:00-17:00 (last admission: 16:45) ■ Open daily ■ Admission: adults, ¥1,300; high school and university students, ¥900; primary and junior high students, ¥600. ■ 35-minute bus ride from Hakone-Yumoto Station (Hakone Tozan Railway) ■ <http://www.narukawamuseum.co.jp>



1 Gaze at the grace of Mt. Fuji and Lake Ashi from the large windows of the guest rooms. The beautiful scenery is like something out of an artist's painting.
2 The building's exterior. 1 night with 2 meals from 20,400yen per person.

A view of Mt. Fuji from every room

'Ryuguden' is a Japanese style hot spring hotel situated on the shores of Lake Ashi. All of its rooms command a magnificent view of Mt. Fuji and Lake Ashi. It has the traditional beauty of Japanese architecture along with hot springs and splendid Japanese-style meals. Our hotel offers a unique luxury that allows you to enjoy Mt. Fuji and the world of Japan to your heart's content.

Ryuguden 龍宮殿

☎ 0460-83-1121

MAP-P26 ②

■ 139 Moto-hakone, Hakone-machi, Ashigarashimo-gun, Kanagawa
■ 65 minutes by bus from Hakone-Yumoto Station (Hakone Tozan Railway)
■ <http://www.princehotels.co.jp/ryuguden/>



1 Kinubiki Tempura Shoga Udon, ¥1,404.
2 Kinubiki Tenseiro, ¥1,944. Washoku artisanal cooks create dishes with such appeal that Japanese as well as Hollywood stars travel far and wide to be here.

Renowned and Novel Noodles

Kinubiki Udon offers finely rendered udon noodles of the highest-grade Japanese wheat and well-known Hakone water, kneaded together with grated Japanese black burdock and sesame. This trademark udon is registered and enjoyed only in this restaurant.

Kinubiki no Sato 絹引の里

☎ 0460-83-5151

MAP-P26 ②

■ 6-10 Moto Hakone, Hakone-machi, Ashigarashimo-gun, Kanagawa
■ Daily Hours (with seasonal variation): 11:00-18:00 (last order)
■ 40 minutes by bus from Hakone-Yumoto Station (Hakone Tozan Railway)
■ <http://www.kinubikinosato.jp> (in Japanese)

1 Relax in the raised tatami sitting area and then sleep at ease in a bed, all in the comfort of this Japanese-and-Western guestroom. Room rates per person: overnight with two meals, from ¥11,000 (plus tax).
2 Luxuriate in the open spaces of a huge bath with large windows or enjoy the privacy of solo bathing, free of charge.
3 From the deluxe suite you have a superb view of the Hakone mountain range—all to yourself.



Inn with Superb View of Mt. Fuji and Four Sulfur Hot Springs

Renovations in April 2016 enhance your stay even more, including Wi-Fi enabled guestrooms with large windows, some on the garden side looking out over Mt. Fuji. Immerse yourself in a choice of four opaque sulfur springs reserved for private bathing free of charge. For dinner, try our seasonal Japanese/Western dinner tray, as beautiful as it is delicious. Savor the variety of some 40 Japanese and Western dishes in the all-you-can-eat breakfast.

Hotel Kagetsuen ホテル花月園

☎ 0460-82-2231

MAP-P26 ①

■ 1244-2 Sengokuhara, Hakone-machi, Ashigarashimo-gun, Kanagawa
■ 40-minute bus ride from Hakone-Yumoto Station (Hakone Tozan Railway)
■ <http://hotel.kagetsuen.net/>





1 With our exclusive lobby view of Mt. Fuji, you'll think Japan's most famous mountain was there just for you!
2 Hot spring with a fabulous view of Mt. Fuji Room rates per person from ¥13,500 for overnight stays with breakfast.

Matchless View of Mt. Fuji

LaLa Gotemba offers our guests an uncompromising, matchless view of Mt. Fuji from specially located guestrooms as well as a brilliant night view of the city from outdoor baths and guestroom verandas. Enjoy exciting sight-seeing and shopping from our convenient location, just 10 minutes by car to Gotemba Premium Outlets. Express bus service from Haneda and Shinjuku to Gotemba Interchange approx 1.5-hour bus ride from Shinjuku Station.

LaLa GOTENBA Hotel & Resort
LaLa GOTENBA ホテル&リゾート

☎ 0120-620-980 **MAP-P30**
■ 2571 Fukasawa, Gotemba-shi, Shizuoka Prefecture
■ 40-minute bus ride from Hakone-Yumoto Station (Hakone Tozan Railway)
■ <http://www.lala-gotenba.com>



1 2 Relax and enjoy your meal in our modern seating, with sunken-style low tables. We also offer transportation to and from the station.

Popular Yakiniku with Our Inherited Secret Sauce

Cook flavorful Wagyu beef in a smokeless roaster and dip it in our inherited secret sauce. We offer an extensive a la carte menu of healthy Korean cuisine, and our special cold noodles are so popular they've been featured on TV.

Korean Cuisine Yakiniku Gyeongbokgung
韓国料理・焼肉 景福宮

☎ 0460-84-5529 **MAP-P26** ①
■ 74-1 Sengokuhara, Hakone-machi, Ashigarashimo-gun, Kanagawa
■ Lunch:12:00-14:00 / Dinner:17:30-22:00 ■ Holidays TBA
■ 25-minute bus ride from Hakone-Yumoto Station (Hakone Tozan Railway)



1 A refined yet relaxed interior. What's more, guestrooms let you enjoy the magnificence of nature, while rooms on the top floor command a spectacular view of Mt. Fuji.
2 Japanese-style creations are served for dinner. The photograph shows an example.

Enjoy a Private Open-Air Bath

This is a quiet forest inn in Sengokuhara. All nine rooms have cypress-lined open-air baths, allowing you to privately enjoy the active hot spring waters that flow continuously. Please enjoy our Japanese-style creations for dinner, made with fresh coastal fish and fresh local vegetables, as well as Fujiyama Wagyu beef.

Hakone Yuyado Zen 箱根湯宿 然

☎ 0460-84-2400 **MAP-P26** ①
■ 1245-96 Sengokuhara, Hakone-machi, Ashigarashimo-gun, Kanagawa
■ 40-minute bus ride from Hakone-Yumoto Station (Hakone Tozan Railway)
■ Phone reservation time: 10:00-20:00

FUJIYA HOTEL CHAIN

A resort hotel by Lake Ashi,
with views of the peak of Mt. Fuji.

Hakone Hotel
FUJIYA HOTEL LAKE YUASA ANEXA

■ 65 Hakone, Hakone-machi, Ashigarashimo-gun, Kanagawa, 250-0521, JAPAN
■ Tel: +81-460-83-6311 ■ <http://www.hakonehotel.jp/en/>

Hakone Onsen Short List

There are many kinds of Hakone hot springs (*onsen*) in which you can immerse yourself in luxuriant relaxation: those offering magnificent views or opaque springs where the color changes through shifting minerals; onsen with reserved bathing to relax in private or with unique colors, scents, and more. Indulge yourself in a bevy of choices suited to your travel needs and personal preference.



Sublime bath immersed in Nature

Hakone Ginyu (see page 32)



Outdoor bath with stunning view of Mt. Fuji

Hotel Green Plaza Hakone



Opaque water brimming with the essence of onsen bathing

Hakone Yuyado Zen (see page 28)



Bath overflowing with a playful spirit

Hakone Kowaki-en YUNESSUN (see page 22)



Reserved bathing for ultimate relaxation in private

Hakone Yuryo (see page 19)

MISMO HAKONE ENGLISH vol.5

Staff
Publisher
Kazuhiro Nakamura
Editor in Chief
Yoshiko Maki
Deputy Editor in Chief
Koichiro Uramoto
Sales&Promotion Staff
Wataru Hasumi
Editor
Kayoko Aihara
Hiroko Matsubayashi
Yoshiko Kanai

Designer
Yukako Miyazawa
NIPPON PRICOM,inc.
Photographer
Junichi Ihara
Megumi Sakurai
Map Design
Shigeko Kobayashi
DTP Staff
Junna Shirasawa

Special Thanks
McDAVIS ASSOCIATES,INC.
NIPPON PRICOM,inc.
Cooperation 協力
Odakyu Electric Railway Co., Ltd.
小田急電鉄株式会社
Odakyu Hakone Group
小田急箱根グループ
HAKONE TOWN
箱根町

HAKONE Convention Bureau
箱根コンベンションビューロー
Hakone Town Tourist Association
一般財団法人箱根町観光協会
Odawara City
小田原市
Issue 発行
iNCLUBE Co., Ltd.
株式会社インクルーブ
<http://www.mismonet.com>

本誌の広告に関するお問い合わせは
株式会社インクルーブ
〒215-0021
神奈川県川崎市麻生区上麻生1-5-1
りそな新百合ヶ丘ビル5F
営業企画部 ☎044-959-3750
Printing and bookbinding 印刷・製本
SANKEI SOGO PRINTING Corporation
サンケイ総合印刷株式会社
次号は2017年6月発行予定です。



Hakone/Odawara MAP

0 1 2 3 4 5km

HAKONE GINYU

連山を見渡し
山紫水明の
境に遊ぶ



*The guest feel 5 senses in scenery and find so many impression,
This is our Ryokan concept.*



TEL. 0460-82-3355