

JAPAN

HAKONE

 Japan.
Endless
Discovery.

2018
Winter/
Spring

vol.7

FREE

English
英語版

HAKONE / ODAWARA / Mt. FUJI VISITOR'S GUIDE

Detailed
MAP
Included

箱根

Mt. Fuji and Lake Ashi



- Breathtaking Views of Mt. Fuji
- Hakone's Various Rides
- Experience Hakone

Japanese Culture and Etiquette

Mi-S-MO
【ミスモ*はこね】



“A most exclusive Japanese retreat”

A stay in Gôra Kadan, the former retreat of the Imperial Family, Kanin-no-miya, situated in the heart of Hakone National Park, is an invitation to bring your five senses to life by immersing yourself in the ancient Japanese way of life.



The rooms have been designed in a minimalist style, and the hotel's facilities include a swimming pool, a spa, and a beauty salon.



ALL AROUND THE WORLD, UNIQUE IN THE WORLD *Our 500 restaurants & hotels offer the finest experiences all over the world.*

Hotel


GÔRA KADAN

2 guests occupancy 51,500~92,700yen
 Room charge half board (dinner & breakfast) per person, per night.
 All prices excluding tax/including service charge.

Tel. +81(0)460-82-3331

✉ reservation@gorakadan.com

Restaurant

Kaiseki KADAN 後苑花壇

located inside the luxurious inn GÔRA KADAN

Restaurant of the Kaiseki cuisine

Tel. +81(0)460-82-3333

✉ kadan@gorakadan.com



Contents

- 5 Getting to Hakone
- 6 Breathtaking Views of Mt. Fuji
- 8 Let's Enjoy Hakone's Various Rides!
- 10 Recommended Courses to Enjoy Hakone
- 11 Transportation Hakone Freepass, Tickets information
- 12 Must See in Hakone
- 20 Experience Hakone

Area Attractions

- 15 Odawara
- 17 Hakone-Yumoto
- 21 Miyanoshita, Kowakidani, Gora
- 25 Sengokuhara, Lake Ashi
- 30 Hakone / Odawara Map

Culture and Etiquette

- 4 Simple Japanese
- 19 Pointers on Bathing Etiquette
- 23 Japanese Customs for Rooms and Meals
- 24 Shrine and Temple Etiquette



Hakone, known for its natural beauty that changes expressions with the seasons, is full of charms -- hot springs, museums and art galleries, historical buildings, leisure facilities, fantastic food and glorious view of Mt. Fuji, the world's cultural heritage site.

Please visit Hakone that made tourists of the world a captive, and make lots of memories there.

Information published in this magazine is as of October, 2017. There may be cases of prices having been changed since then, so please check with the stores before use. And there are instances of consumption tax or bathing tax, other service fees applied separately. The overnight stay prices are a single person charge on weekday (Monday to Thursday) and Sunday, excluding the day before a holiday) overnight stay with two meals, for a room by two persons unless otherwise stated.
 ※ The details of what have been referred in this magazine could be changed or discontinued due to weather or other reasons. Please check with the organizer/facility/store before heading out.

Please note that the opening/business hours, charges, closed days, event opening periods and menu contents of facilities and stores published in this magazine are subject to change without notice.

Unauthorized reproduction/copying of photographs, illustrations, maps or articles in this magazine are strictly forbidden.



A feast for all your senses. Make the most of being away.

Pristine mountain forests. World-famous hot springs and cuisine. Relax and savor this rare pairing of luxurious comfort with classic Japanese style and hospitality.

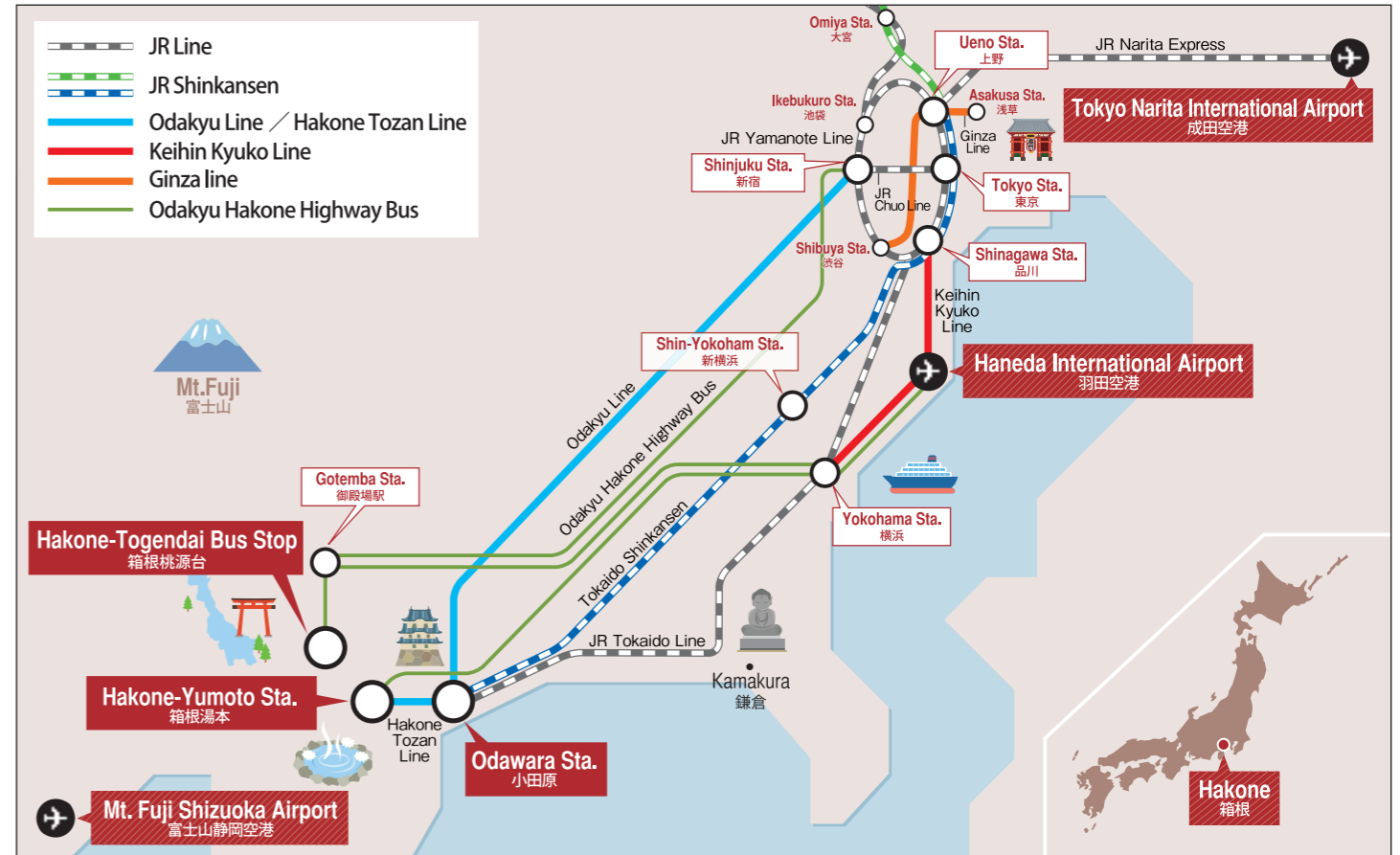
Tel. 0460-82-2000
hakone.regency.hyatt.com

HYATT REGENCY HAKONE RESORT AND SPA
1320 Gora, Hakone-Machi
Ashigarashimogun, Kanagawa 250-0408



HYATT name, design and related marks are trademarks of Hyatt Corporation. ©2017 Hyatt Corporation. All rights reserved.

Getting to Hakone



Point 1

Simple Japanese

If you can learn some simple Japanese, it will be useful when trying to communicate.

Greeting and Daily Conversation

Yes / No	hai / iie
Good Morning	ohayo (gozaimasu)
Hello	konnichiwa
Good evening	konbanwa
Goodbye	sayonara
Thank you	arigato (gozaimasu)
Excuse me	sumimasen
I'm sorry	gomennasai
It's delicious	oishi

Shopping and Eating

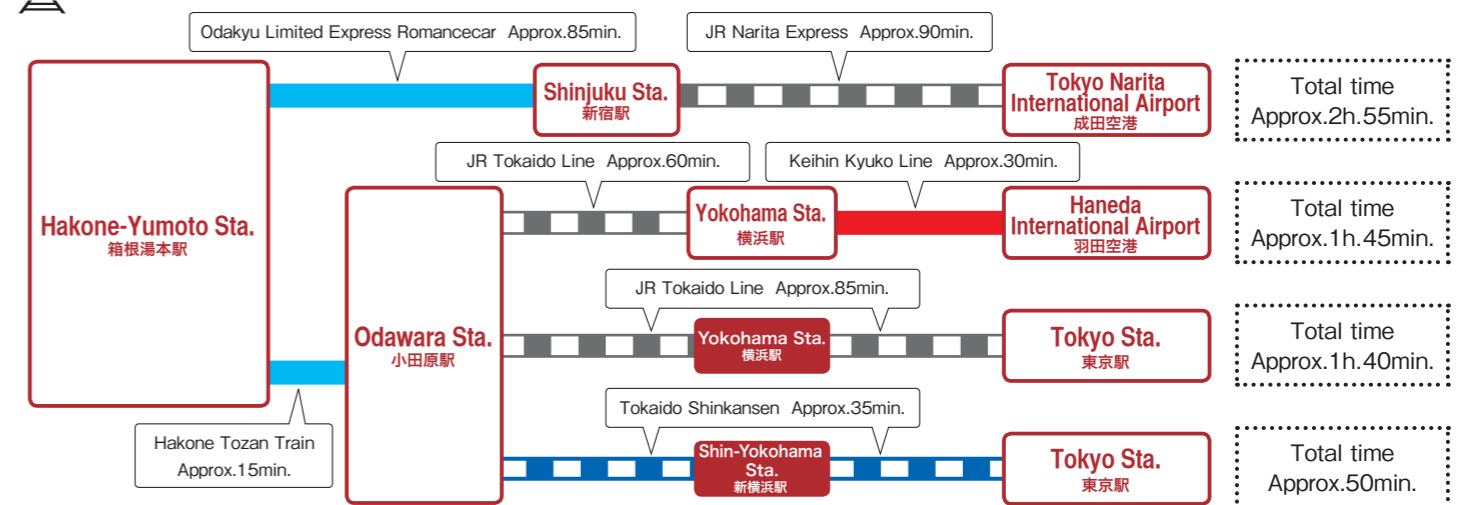
How much is it?	Ikura desu ka?
What do you recommend?	Osusume wa nani desu ka?
What is this?	Kore wa nani desu ka?
Do you have ○○?	○○ wa arimasu ka?
I'll have this, please.	Kore o kudasai
Can I pay using my creditcard?	Kurejitto Kādo de shiharai dekimasu ka?

Sightseeing

Where is the ○○?	wa doko desu ka?	How long will it take?	Jikan wa dore gurai kakarimasu ka?
I want to go to ○○.	ni ikitai desu	Could you please take my/our picture.	Shashin o totte kudasai
Toilet	toire	Can you speak English?	Eigo wa hanasemasu ka?
Station	eki	I lost my ○○.	○○ o nakushimashita
Bus Stop	basunoriba		

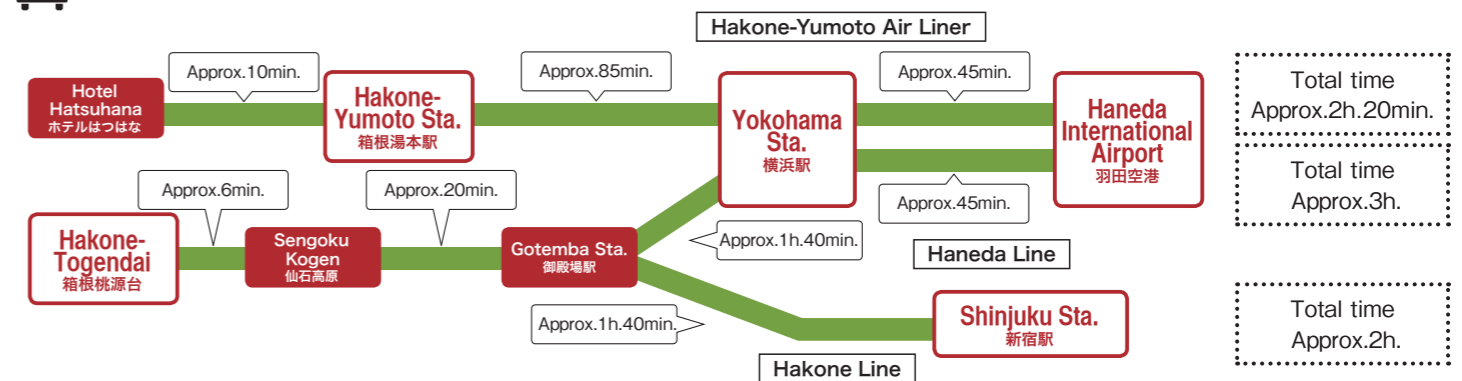
Tourist office	kanko annaijo
Hospital	byouin

Train



Bus

Odakyu Hakone Highway Bus



*It is an example. Estimated time is subject to change depending on operation and road condition.

Breathtaking Views of Mt. Fuji

Mt. Fuji, symbolic home to Japanese people, became a World Cultural Heritage site by virtue of its beauty and being a source of spiritual as well as artistic inspiration. Experience all the joys of uniquely viewing Japan's sacred peak from Sengokuhara and Moto-Hakone areas.



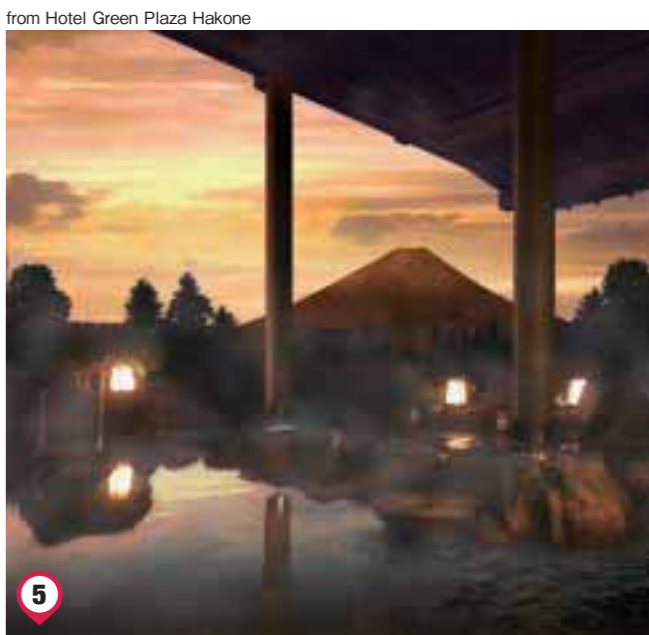
from Mt. Komagatake



from Owakudani



from Hakone Ashinoko Narukawa Art Museum



from Hotel Green Plaza Hakone



from Moto-hakone Port



from Maiden of the bell (Otometoge)

Let's Enjoy Hakone's Various Rides!

Whether cruising through the sky, crossing a lake, ascending or descending mountain trails on wheels or ropeway, Hakone boasts exciting ways to go and a chance to experience magnificent nature.



Fully experience nature's finest from the sky

Enjoy Heavenly Views



Hakone Ropeway

☎0465-32-2205
www.hakoneropeway.co.jp/foreign/en/

Enjoy the views during a 30-minute ride across 4 kilometers between Sounzan and Togendai stations, including the amazing Owakudani volcanic valley, Lake Ashi, and magnificent Mt. Fuji.

Hakone Tozan Cable Car

Travels at approximately 1.2 kilometers to connect Gora and Sounzan stations in 10 minutes.



Hakone Tozan Railway

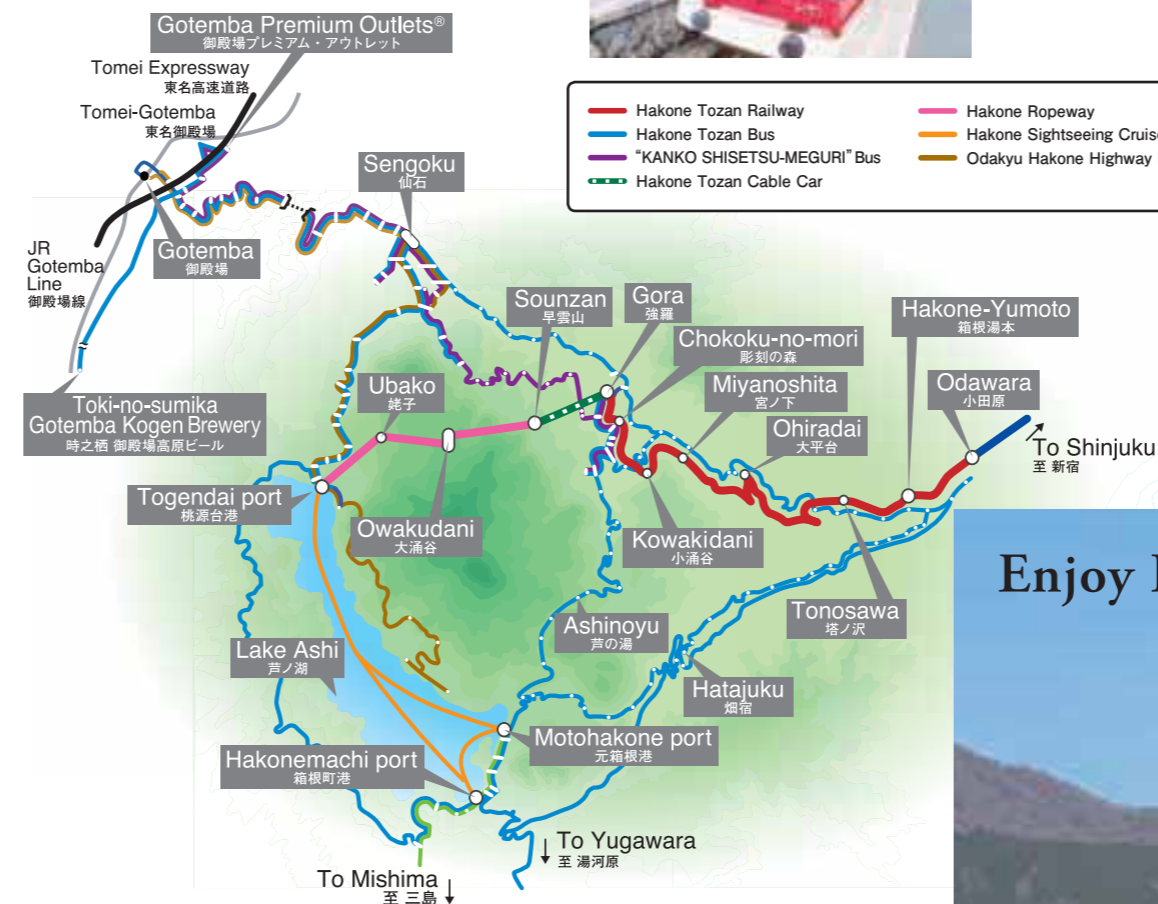
Travel from Odawara to Gora stations while enjoying the surrounding wilderness and breathtaking views from railroad bridges.

Steepest pitch in Japan

Between Hakone-Yumoto and Kowakidani stations is an 80/1000 gradient, the steepest in Japan for an adhesion railway.

Switchback

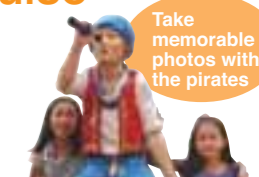
The railcar climbs the steep incline in a switchback zig-zag, changing directions back and forth.



Hakone Sightseeing Cruise

☎0460-83-7722
www.hakone-kankosen.co.jp/foreign/en/

Operates between Hakonemachi, Moto-Hakone and Togendai on Lake Ashi. Enjoy the excellent Hakone skyline and a panoramic view of Mt. Fuji.



Take memorable photos with the pirates

Owakudani original curry and rice with soft-boiled egg



Owakudani Ekisyokudo
 (The restaurant in Owakudani Station)

Enjoy 130-meter view!

Sounzan Station is 757 meters high, and Owakudani Station 1,044 meters high, a difference of 287 meters traveled in about 10 minutes. Enjoy the breathtaking view of Owakudani from a gondola height of 130 meters!



Enjoy Lake Ashi Cruise



Royal II

Three Fine Ships

Three different sightseeing ships — the red Royal II, the chic Victory, and the Vasa with its elegant sculptures — take you to the fascinating cruise on Lake Ashi.



Victory



Vasa



"KANKO SHISETSU-MEGURI" Bus
 (Tourist Attraction Sightseeing Bus/ Hakone Tozan Bus)

This comfy way to go sports a fancy, retro-looking design as it circles tour locations like museums, with skylight windows for breathtaking views of sky and trees.



Hakone Tozan Bus

Many buses operate, offering easy connections as it crisscrosses Hakone's fascinating mountain roads.



Odakyu Hakone Highway Bus

Offers direct transit from Shinjuku, Tokyo, Haneda Airport and Yokohama to Hakone and Gotemba.

Recommendation See page 11 for Information on great savings with your Hakone Freepass.

Hakone Lake Hotel

We are proud of "Mayu-no-mori" hot spring



Only 3-minute walk from Togendai Station.

Café & Souvenir HOTORIYA

Visiting old, learn new.



Hakonemachi port

Recommendation Unlimited ride on the Hakone Sightseeing Cruise and the Hakone Ropeway with Sightseeing Cruise & Ropeway 1Day Ticket / Hakone Freepass

Recommended Courses to Enjoy Hakone

1 RIDES AND HISTORY COURSE

Hakone-Yumoto Sta.
Hakone Tozan Railway

Gora Sta.
Hakone Tozan Cable Car

Koen-shimo Sta.
Walk

Hakone Gora Park
Walk

Koen-kami Sta.
Hakone Tozan Cable Car

Sounzan Sta.
Hakone Ropeway

Owakudani Sta.
Hakone Ropeway

Togendai Sta./Port
Hakone Sightseeing Cruise

Motohakone Port
Walk


Hakone Shrine
Walk

Motohakone Port
Hakone Sightseeing Cruise

Hakonemachi Port
Walk

Hakone Sekisho
Hakone Tozan Bus

Hakone-Yumoto Sta.




2 NATURE COURSE

Hakone-Yumoto Sta.

Hakone Tozan Railway

Kowakidani Sta.
Walk

Chisuji Falls
Walk

Kowaki-en
"KANKO SHISETSU-MEGURI" Bus

Hakone Venetian Glass Museum

Hakone Venetian Glass Museum

Hakone Yuryo
Hot spring (onsen)

Hakone-Yumoto Sta.







A convenient and economical excursion ticket

Hakone Freepass

Enjoy the beauty of Hakone, surrounded by nature.

You can freely board eight different types of transportation in Hakone



All of the transport in the Hakone area which have this mark can be freely boarded.

For more information, refer to the brochure "箱根 HAKONE" available at all stations on the Odakyu line.

<8 different types of transportation>

- Hakone Tozan Line
- Hakone Tozan Cable Car
- Hakone Ropeway
- Hakone Sightseeing Cruise
- Hakone Tozan Bus (in designated zones)
- "KANKO SHISETSU-MEGURI" Bus (Tourist Attraction Sightseeing Bus/Hakone Tozan Bus)
- Odakyu Hakone Highway Bus (in designated zones)
- Tokai Bus Orange Shuttle (in designated zones)

<Sample fares>

2 days	Adult	Child
From Shinjuku	5,140 yen	1,500 yen
From Odawara Gotemba	4,000 yen	1,000 yen

* Fares may vary depending on the starting station and length of validity. * 3 days ticket also available



<Examples of trips in Hakone using the Freepass>



* An additional limited express surcharge is required to ride the Romancecar.

Take the quick, comfortable Romancecar to Hakone! (Reservation required)



Passengers with a Freepass from Shinjuku to Hakone can board the Romancecar (reservations required) if they purchase the special express ticket (890yen).

* Shinjuku to Hakone-Yumoto: approx. 85 min * Normal express train: approx. 115 min. * With Hakone Freepass from Odawara and travel between Shinjuku and Hakone-Yumoto, by Romancecar, normal fare and limited express surcharge are required. Please contact staff for more information.

<Romancecar limited Express surcharge>

Limited Express Surcharge	Odawara	Hakone Yumoto
From Shinjuku	890 yen	890 yen

The prices are subject to change.

Places where the Freepass is available

- Any Odakyu Line station
- Odakyu Sightseeing Service Center, Shinjuku [Business hours 8:00-18:00]

Odakyu Sightseeing Service Center is special service counter for foreign tourists. English speaking staff are always available (on certain shifts Chinese speaking and Korean speaking staff are also available). They offer information about sightseeing along the Odakyu line in places like Hakone and Enoshima, as well as sales of tickets and Freepasses.

TEL:03-5321-7887
FAX:03-5321-7886
E-mail:welcom@odakyu-dentetsu.co.jp
WEB:www.odakyu.co.jp/english



Odakyu Sightseeing Service Center (Shinjuku)

There is also an Odakyu Sightseeing Service Center in Odawara.
Business hours 8:30-18:00
TEL:0465-24-4101

Must See in Hakone

Sengokuhara 仙石原



Sengokuhara Pampas Grass Fields 仙石原ススキ草原

Experience the sensual feel of pampas grass fields at the foot of Mt. Daigatake, renowned for showing Hakone autumn at its best. These golden fields, swaying as one in the fall breeze, are wonderful to see and touch.



Owakudani 大涌谷

Created roughly 3 millennia ago by steam explosions, "Great Boiling Valley" is an active volcanic zone sourcing Hakone hot springs and a hot tourist spot for Mt. Fuji views. Feel the volcanic power amid natural beauty.

Moto-Hakone, Hakone-Machi 元箱根・箱根町

Hakone Sekisho (Check-point) 箱根関所

Feel the past come alive at this historic checkpoint for foot and vehicle traffic along the Tokaido Road, linking Edo (now Tokyo) and Kyoto in the Edo period. Inspection and tax collection were held in the Edo-style building.



Cedar Avenue 杉並木

Along the historic Tokaido Road stands an avenue of cedars planted to give shade to travelers. Within this unique community are elders over 350 years old you must meet in their cool shadows.

Hakone Shrine 箱根神社

Established amid the Nara period, this shrine was dedicated to all the local gods of Kanto and now is known for obtaining fortune, protection against evil, wish fulfillment, and safe road travel.



Miyanoshita, Gora 宮ノ下・強羅



Hakone Gora Park 箱根強羅公園

Stroll around this French-styled park, opened in 1914, and get a clear sense of the design in bilateral symmetry around a fountain. Delights of the four seasons include a teahouse, ceramics, and flowers.



Chisuji falls 千条の滝

Note how this waterfall, 3 meters high and 25 meters wide, flows quietly and hangs like a reed screen over moss-covered rocks in the upper reaches of Jakotsu River. Enjoy seasonal changes like summer's glowing fireflies and autumn's fiery leaves.

Odawara 小田原



Odawara Castle 小田原城

No trip to Odawara will be complete without visiting this castle built by Omori Yoriharu, regional lord of Nishi-sagami during the Muromachi period (1337-1573). The Hojo Clan, entombed at Soun-ji, succeeded him in ruling from this historic fortress, said to have been the largest in Japan during the Warring States period.



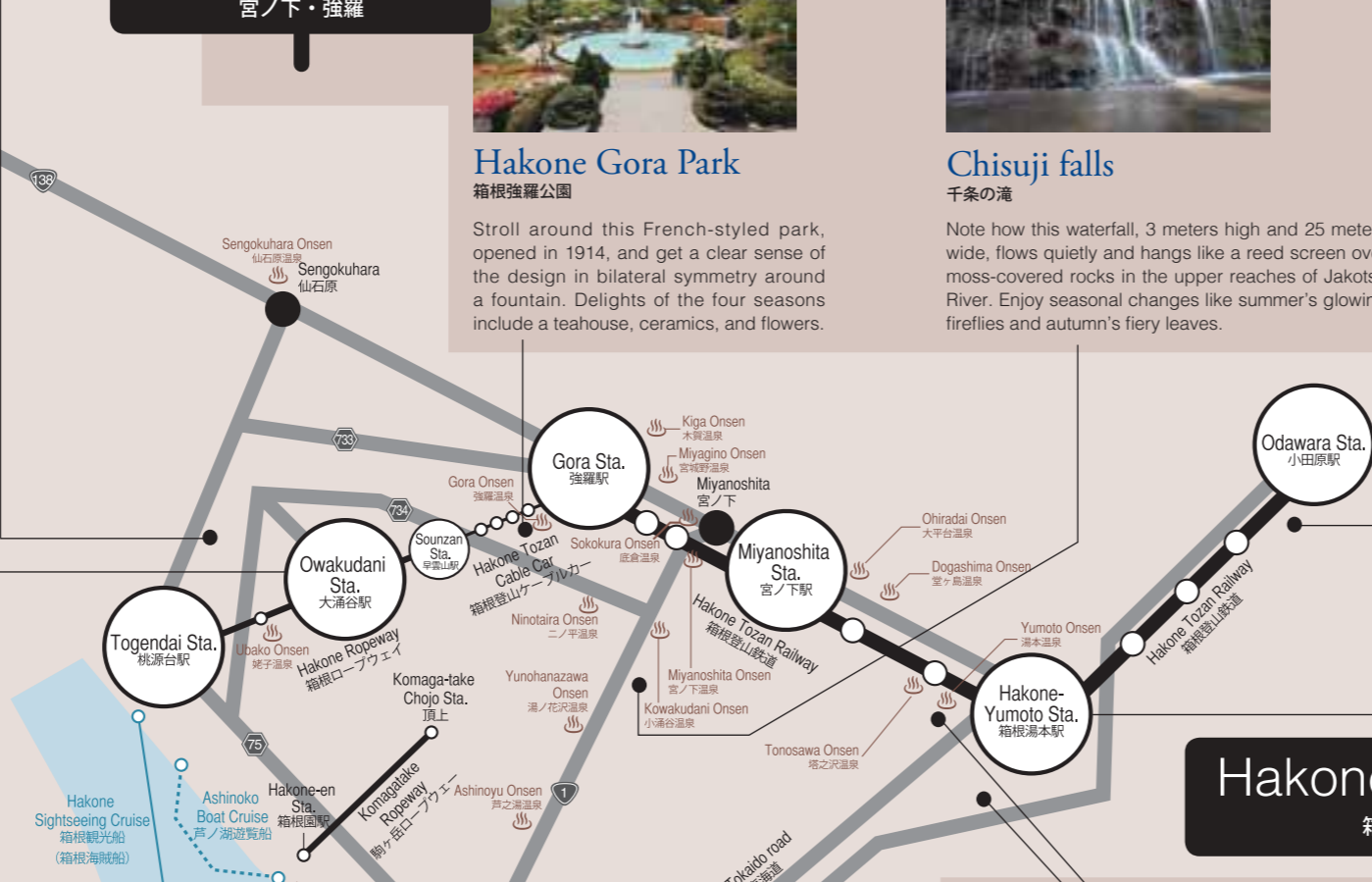
Hotoku Ninomiya Shrine 報徳二宮神社

Established in 1894, next to Odawara Castle, the shrine has since been famous for the divine figure of Ninomiya Sontoku, well-known agriculturalist and philosopher.



Odawara Fishing port 小田原漁港

In addition to offering soothing sounds of harbor waters, this port serves up a rich sea harvest including horse mackerel and sardine. And being seaside, naturally the harbor has plenty of places to dine on the freshest seafood, possibly lunching on a catch hauled from the ocean by fishermen at dawn.



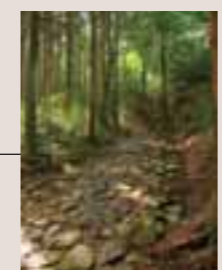
Hakone-Yumoto 箱根湯本

Hakone Old Tokaido Road 箱根旧街道



Amazake Chaya 甘酒茶屋

Historic teahouse open for business early in the Edo period sits perched on the Hakone stretch of the Tokaido Road, a portion legendary for being the most perilous on the old highway. Don't miss the tangy taste of sweet sake, yet another minor legend dating back to the start of the teahouse as well as naming it.



Ishidatami 石畳

This stone-paved road was built at the beginning of the Edo period to make travel smooth and easy for royals as well as commoners. Present-day travelers can sense the passage of time as they look out on scenery as beautiful and captivating as it was for Edo pilgrims, priest, poets and others.



Soun-ji Temple 早雲寺

Construction of this historic temple was overseen by Hojo Soun, a military commander from the Warring States period (1467-1603). The grounds are done with exemplary taste, containing a traditional stone garden in the dry landscape style as well as a tomb equal to the enduring legacy of five generations of the Hojo Clan.



Yumoto-Kenban 湯本見番

Though it may be hard to believe geisha are not born but made, the daily training here of Yumoto geisha includes dancing, singing, reciting poetry, gracefully pouring drinks without spilling a drop, and more. In addition, seasonal events are held to demonstrate their accomplishments.



Hakone-Yumoto 箱根湯本

Arguably the most vibrant and lively hot spring district in all Hakone, Yumoto will soon convince you of its superior features, like hot springs for day trips, firmly established inns offering traditional hospitality, and streets around the station chock-a-block with restaurants and souvenirs shops.

Seafood Gourmet Theme Park Odawara Hayakawa Gyoson

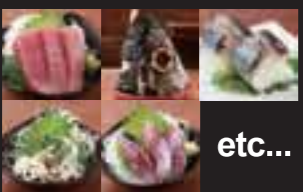
小田原早川漁村

Go Portside
for Good Food
and Fun!

80min.
All you can eat and drink



Experience otokogi service
—done with great spirit—
every 30 minutes!



etc...

Be ready for whatever comes
to delight your palate!

**Feast on fresh seafood BBQ
to your heart's content!**



<http://gyoson.com>

1F Aburiya
fishermen's hamayaki

☎ 0465-24-7804 ■ Hours: 10:00-22:00

Cost
general, ¥2,980;
elementary school, ¥1,500;
pre-school, ¥800;
age three and younger, free

All you can
eat and drink
(80 min.)

- 1F Umaimono Yatai (vendors)** ■ Hours: 11:00-16:00
- 1F Kaneyoshi souvenir shop** ■ Hours: 10:00-17:00
- 2F Kaisendonya Kaishu (seafood rice bowl restaurant)**
■ Hours: weekdays, 11:00-17:00; Sat., Sun., hol., 10:00-17:00
- 2F Gyoko no Shirasu Ichiba** ■ Hours: 11:00-16:00
(house specialty, whitebait)

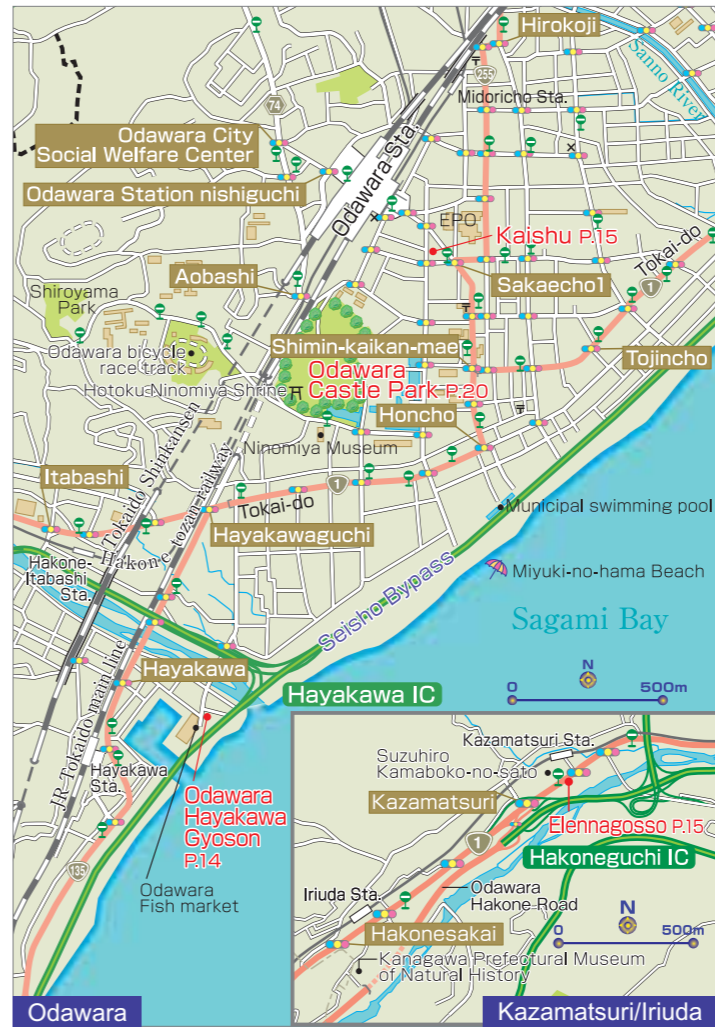
〔 Odawara Hayakawa Gyoson 〕

☎ 0465-24-7800
1-9 Hayakawa, Odawara-shi
■ Hours: 10:00-22:00, daily (varies by branch)
■ Access:
5 min. by taxi from Odawara Station
5 min. on foot from Hayakawa Station
(JR Tokaido Line)
15 min. by taxi from Hakone-Yumoto Station

〔 Daini (Second) Gyoson 〕

☎ 0465-23-3360
1-11-2 Hayakawa, Odawara-shi
■ open daily

Reservations
only



Specialty Rice Bowl Restaurant Run by a Local Fish Dealer
Our specialty restaurant offering seafood rice dishes is a hot topic on TV and in magazines. A fish dealer directly manages us, so you'll be delighted by both the quantity and the excellent taste. Enjoy discovering your favorites from 40 different varieties of seafood rice dishes. Whether you enjoy a rice bowl, sashimi or tempura, you won't forget its distinct flavor.

Kaisendonya Odawara Kaishu
海鮮丼屋 小田原 海舟
☎ 0465-24-2237
■ 1-14-55 Sakaecho, Odawara, Kanagawa
■ 11:00-20:00
■ Open daily
■ 3-minute walk from Odawara Station (JR/Odakyu line)



1 A thrilling adventure in the treetops, more than 10 meters high.
2 Admission (including insurance): adults (18 or over) ¥3,600; children (ages 6-17) ¥2,600. Family discounts available.

Thrilling Adventure in the Forest
An outdoor park filled with trees whose origin is in France. Zip among the treetops in our special safety harness and enjoy 40 different activities. Our two-hour course can be challenged by first-grade elementary school students and above. Even adults will appreciate the sense of accomplishment.

Forest Adventure Odawara
フォレストアドベンチャー・小田原
☎ 080-4330-4030
■ 4391-1, Kamenokouyama, Kuno, Odawara, Kanagawa
■ 9:00-17:00 ■ No fixed holidays
■ 15-minute bus ride from Odawara Station (JR/Odakyu Line)
■ <http://www.foret-aventure.jp>

Restaurant

えねなご

Buffet : Elennagosso

In the morning, Elennagosso's chefs go to the local fish market and select the freshest seafood available. They also mainly use vegetables from local farmers grown using fertilizer made from leftover fish. Enjoy as much of our local delicacies as you like at this sustainable restaurant's all-you-can-eat buffet.

Buffet : Weekdays

- Lunch / 11:00~14:45 **¥1,900**
- Tea Time / 15:00~17:00 **¥1,300**
(snacks&sweets)

Weekends and holidays

- Brunch / 9:30~11:00 **¥1,500**
- Lunch / 11:00~17:00 **¥2,200**

● Child / age4~12 Half price. 3 and under free.
*Our all-you-can-eat buffet is available for 80 minutes.



245 Kazamatsuri, Odawara city, Kanagawa, Japan
■ Short walk from Kazamatsuri Sta., 10-min drive from Odawara Sta.
■ 7 days a week. Open daily (closed Jan. 1 and other days)
■ Payment by credit cards accepted.
<http://www.kamaboko.com/en/>

Inviting Warmth of Japanese Culture: The Pleasure of Onsen (Hot Springs)

Stay & Enjoy

1 Matsuzakaya Honten

松坂屋 本店



Japan's Great Inn for Over 350 Years

Since 1662, the Inn has maintained the traditions which reflect the History that will make your trip memorable in one of the Hakone's leading historical onsen.

2 Kinnotake Tonosawa

金乃竹 塔ノ澤



Remarkable Immersion in Nature

It has an extensive site of 66,116 Square Meter integrated with nature. All the rooms with an out-door bath for the mental and physical liberation with outstanding service.

3 Okudo Saryo Rikyuan

おくど茶寮 利休庵



Savory Dining and Bathing

Savor healthy, meat-free kaiseki cuisine prepared with care. Also enjoy the milky-white hot spring.



5 Hakone Botanical Garden of Wetlands

箱根湿生花園



Floral Delight in Four Seasons

We have about 1,700 varieties of flora, abounding in the seasonal beauty which make this garden popular destination for taking photos.



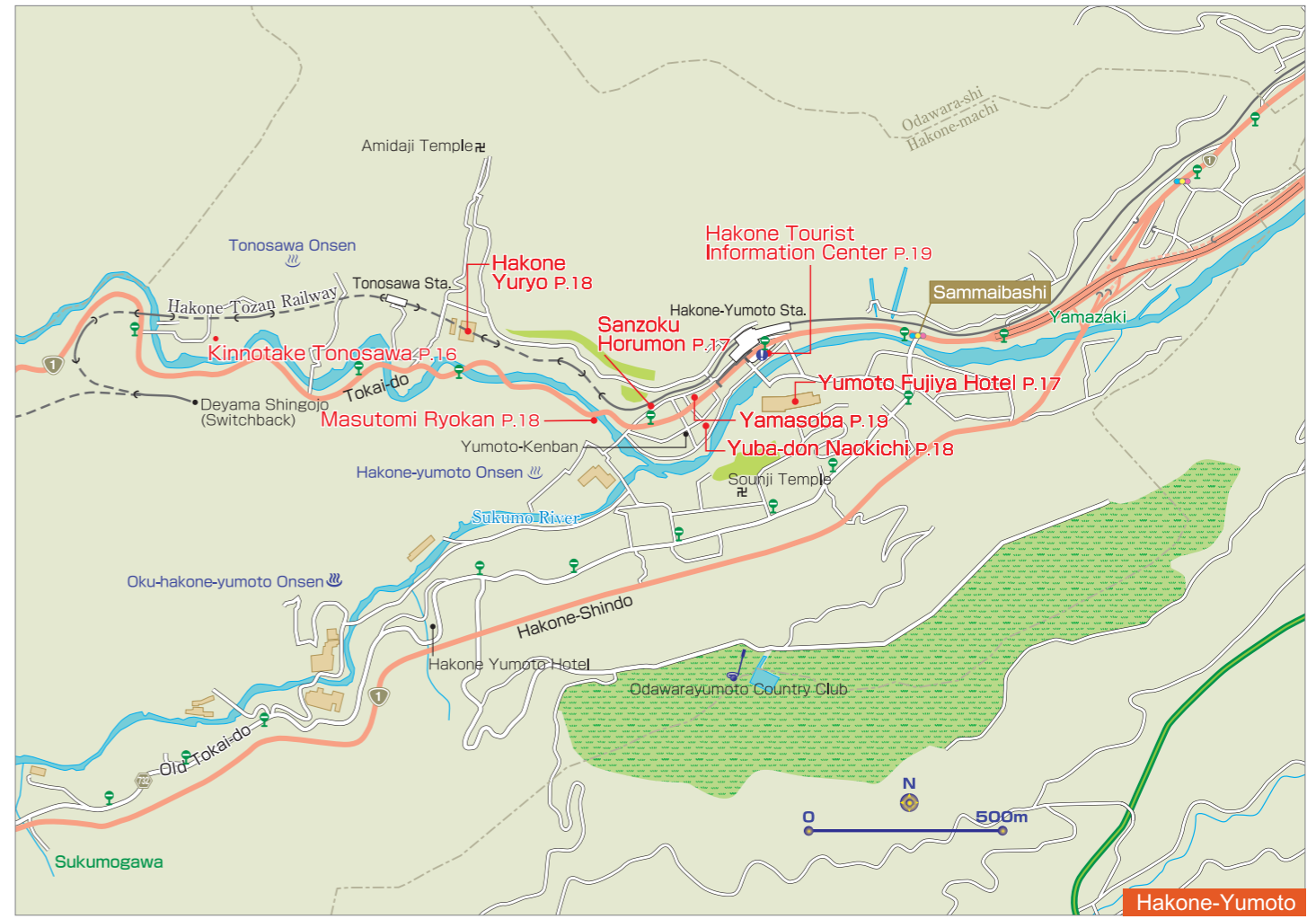
4 Kinnotake Sengokuhara

金乃竹 仙石原



Hakone's Premier Luxury Inn

Enjoy the rooms with an outdoor bath emphasizing private feeling. An accommodation full of playful spirit with ancient stories as a theme.



1 Three-minute walk from Hakone-Yumoto Station. Photo op: Ajisai Bridge, in front of the hotel.
2 Discovered in the eighth century, Yumoto Hot Springs has the longest history of Hakone's 17 major hot springs.

Comfort Zone Deep in Nature

Rooms with a view of mountains or of Hakone's funicular train are inviting, as are dining options like izakaya or restaurants serving seasonal-focused Japanese, Western, and Chinese cuisine. What's more, refreshing immersion awaits you in outdoor open-air bathing set amid nature; large public indoor bathing, with room to move at ease; and private family bathing, all renowned for beautifying the skin.



1 Part of the fun is cooking luscious meat yourself at a shichirin grill at each table. Various yakiniku dishes from ¥480.
2 Terrace dining is a popular choice by day—for people as well as pets—so have a great time with friends and family at our spacious restaurant.

Fun and Popular Yakiniku Until Late

For succulent yakiniku ("grilled meat"), this is the place to go: rich varieties of meat served with care for handmade sauce, dressing, and even kimchi. Among many conveniences, like nearby Hakone-Yumoto Station and pets allowed for terrace dining, is our uniquely late closing time of 1:00 AM. Also savory is our reasonable lunch menu.

1. Matsuzakaya Honten

57 Ashinoyu, Hakone-machi, Ashigarashimo-gun, Kanagawa

☎0460-83-6511
http://www.matsuzakaya1662.com/

MAP P25②

2. Kinnotake Tonosawa

191 Tonosawa, Hakone-machi, Ashigarashimo-gun, Kanagawa

☎0460-85-9800
http://kinnotake-tonosawa.com/

MAP P17

3. Okudo Saryo Rikyuan

817-460, Sengokuhara, Ashigarashimo-gun, Kanagawa

☎0460-85-8282
http://www.sengokuhara.com/

MAP P25①

4. Kinnotake Sengokuhara

817-342, Sengokuhara, Ashigarashimo-gun, Kanagawa

☎0460-85-9200
http://www.kinnotake.com/

MAP P25①

5. Hakone Botanical Garden of Wetlands

817, Sengokuhara, Ashigarashimo-gun, Kanagawa

☎0460-84-7293
http://hakonekanko.com/
Open 9:00-17:00 / Closed from Dec. 1 to Mar. 19 / Admission: ¥700 adults, ¥400 primary school students

MAP P25①

Yumoto Fujiya Hotel 湯本富士屋ホテル

☎0460-85-6111

MAP P17

■ 256-1 Yumoto, Hakone-machi, Ashigarashimo-gun, Kanagawa
■ Lunch: 11:30-14:00 (till 14:30 on Sat./Sun./holidays); Dinner: 18:00-20:30
■ Open daily ■ 3-minute walk from Hakone-Yumoto Station (Hakone Tozan Railway) ■ http://www.yumotofujiya.jp/en/

Sanzoku Horumon 山賊ホルモン

☎0460-85-5337

MAP P17

■ 724-5 Yumoto, Hakone-machi, Ashigarashimo-gun, Kanagawa
■ 12:00-25:00 (last order 24:30)
■ Closed on Thursdays
■ 3-minute walk from Hakone-Yumoto Station (Hakone Tozan Railway)



1 Traditional Japanese-style architecture and warm hospitality are popular with overseas travelers.
2 Washoku meal of seasonal vegetables and fresh seafood is healthy and delicious. Enjoy our specially prepared breakfast, too.

Hot-Spring Inn Focused on Washoku

Relax in comfort and style at this Japanese inn, a five-minute walk from Hakone-Yumoto Station, where you can immerse yourself in a rooftop open-air bath (¥2,000/45 min., total fee for two) boasting the best hot-spring water quality in Hakone. As you bathe, enjoy a magnificent view of Hakone's beautiful sunrise or sunset beyond the mountains.

Mamane-yu Masutomi Ryokan

ままね湯 ますとみ旅館

☎ 0460-85-5775

MAP P.17

- 656 Yumoto, Hakone-machi, Ashigarashimo-gun, Kanagawa
- Five-minute walk from Hakone-Yumoto Station (Hakone Tozan Railway)
- <http://www.mamaneyu.jp/>



Experience, delicious local dish called Yuba-don

Fresh Japanese yuba (tofu skin) is made by lifting the heated skin from soy milk with skewers. Our yuba, made from the finest quality soy beans, is boiled together with bonito broth, and layered with beaten eggs over rice. Our soft, delicious Yuba-don is a masterpiece of which everyone should taste at least once in life. We also have a free footbath at the front.

Yuba-don Naokichi 湯葉井 直吉

☎ 0460-85-5148

MAP P.17

- 696 Yumoto, Hakone-machi, Ashigarashimo-gun, Kanagawa
- 11:00-18:00, last order
- Closed on Tuesdays (Open on Tuesday holidays)
- 3-minute walk from Hakone-Yumoto Station (Hakone Tozan Railway)



Hakone Tourist Information Center

Obtain the latest information of the whole Hakone area, such as sample trip plans and the best spots of the season here. English-speaking staff is always waiting to help plan your trip around Hakone.

Hakone Tourist Information Center

Open hours 9:00~17:45 (open every day)

TEL 0460-85-5700

Hot soba noodles topped with Japanese yam, wild vegetables, and egg yolk

Yamaimo Soba ¥1,180

Peak Taste You've Known and Loved for Half a Century

Yamatake Soba ¥1,300

Tendon (regular) ¥1,320

Healthy soba noodles served cold, heaped with grated daikon and mushrooms

Rice bowl loaded with deep-fried jumbo shrimp, fish, and fresh veggies

家蕎麦 箱根自製蕎麦

Hakone Jinenjo YAMASOBA

TEL : 0460-85-7889

704 Yumoto, Hakonemachi, Ashigarashimo-gun, Kanagawa

11:00 ~ 19:00 Closed: Thursdays

No Parking Credit Card not accepted

<http://www.yamasoba.com>

森の温泉。森のめし。

箱根温泉

HOT SPRINGS

Large communal baths: "Honden Yurakuan Oyu"

Indoor baths, open-air baths, pottery baths, and sauna facilities

Adults (including Age 13 and over) :1,400 yen
Children (Age 6-12) : 700 yen

Opening Hours : Open 365 days a year (the resort may occasionally be closed for maintenance work)

Weekdays: 10:00-21:00 (last admission at 20:00)
Saturdays, Sundays and public holidays: 10:00-22:00 (last admission at 21:00)

Private open-air baths: "Hanare Yuya Kaden"

19 private rooms available

Reservations can be made by telephone (0460-85-8411) up to one month in advance.

Fee for private room use (per room, per 60-minute period):

Type 1 (7 rooms)	Type 2 (8 rooms)	Type 3 (4 rooms)
4,000 yen	5,000 yen	6,000 yen

Opening Hours : Open 365 days a year (the resort may occasionally be closed for maintenance work)

Weekdays: 10:00-21:00 (last admission at 20:00)
Saturdays, Sundays and public holidays: 10:00-22:00 (last admission at 21:00)

Hakone Yuryo
— A hot spring resort that's easily accessible from Tokyo as a day trip

Hakone Yuryo can be reached easily from both Haneda Airport and Narita Airport, and is situated in one of Japan's most outstanding hot spring resort areas.

Experience a comfortable, enjoyable train journey on the Odakyu Line!

Limited Express "Romancecar" Odakyu Line + Hakone Tozan Line Approx 115 minutes

Approx 90 minutes Narita Airport

Approx 45 minutes Haneda Airport

Approx 130 minutes Yokohama Sta. Hakone-Yumoto Airliner (Highway express bus)

Pointers on Bathing Etiquette

These are places to relax and heal your mind and body, so enjoy your time calmly and refrain from any public pool-type antics.

Point 2

1 Wash before entering the bath!

Wash face and body, then rinse off all soap before entering the tub. Enter naked, without wearing a towel, and enjoy soaking—only soaking.

2 No towels in the tub

Enter the bath slowly, to avoid splashing. As a matter of public hygiene, don't put or let your towel into the water and, in general, follow common-sense manners as well as these etiquette pointers.

3 Dry off after bath and before entering dressing room

Dry off with a towel in the bathing area, before entering the dressing room, to prevent the dressing room floor getting wet.

Onsen FAQs

- Onsen water can be quite dense and the heat intense, so avoid getting dizzy by limiting your time: don't soak too long (no more than 15 minutes). Immerse yourself up to neck or waist, no deeper, and be sure to hydrate before and after a bath.
- Bath water may have some "floaties" that are natural mineral components, not trash or filthy bits, so don't worry if something tiny comes your way.

Experience *Hakone*

Yosegi-Zaiku



Hakone's traditional marquetry craft dates back to the Edo period (1603-1867). Experience making a trick box (*karakuri-bako*) using beautiful pieces of wood.

1



Inside Hakone Gora Park is Hakuundo tearoom, built during the Taisho era (1912-1926), where you can tour the space and enjoy powdered green tea (*matcha*) and Japanese sweets.

2

Tencha



Wishing at Shrine Fountain

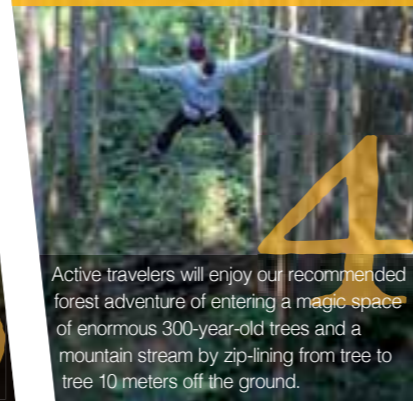


In a precinct of Hakone Shrine is the nine-headed dragon shrine of Kuzuryu, with a sacred fountain honoring the dragon god in front. Write your wish and pledge to fulfill it on a slip of paper and release it into the fountain.



3

Tree Climbing and Zip Line Adventure



Active travelers will enjoy our recommended forest adventure of entering a magic space of enormous 300-year-old trees and a mountain stream by zip-lining from tree to tree 10 meters off the ground.

4



At Odawara Castle, dress like a samurai in armor and helmet, a kimono-clad princess, or in the costume of Fuma ninja who supported the Hojo Clan.

Armor and Ninja Costumes

1 Hakone Trick Museum ☎0460-83-6604

■ 10:00-17:00 (last admission, 16:00) ■ Daily [MAP P25 ②]
■ Fee: Trick box (small), from ¥1,550 ■ Reservation required

2 Hakuundo, Hakone Gora Park ☎0460-82-2825

■ 10:00-16:00 ■ Daily (with entry fee) [MAP P21]
■ Wintertime remodeling is planned. Please inquire for details.
■ Fee: Inside tour, ¥500 (tea & sweets included)

3 Hakone Shrine ☎0460-83-7123

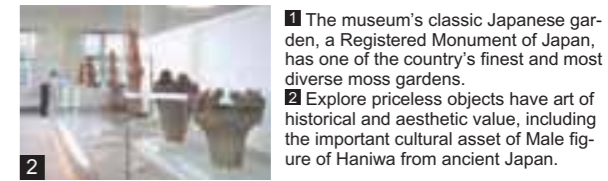
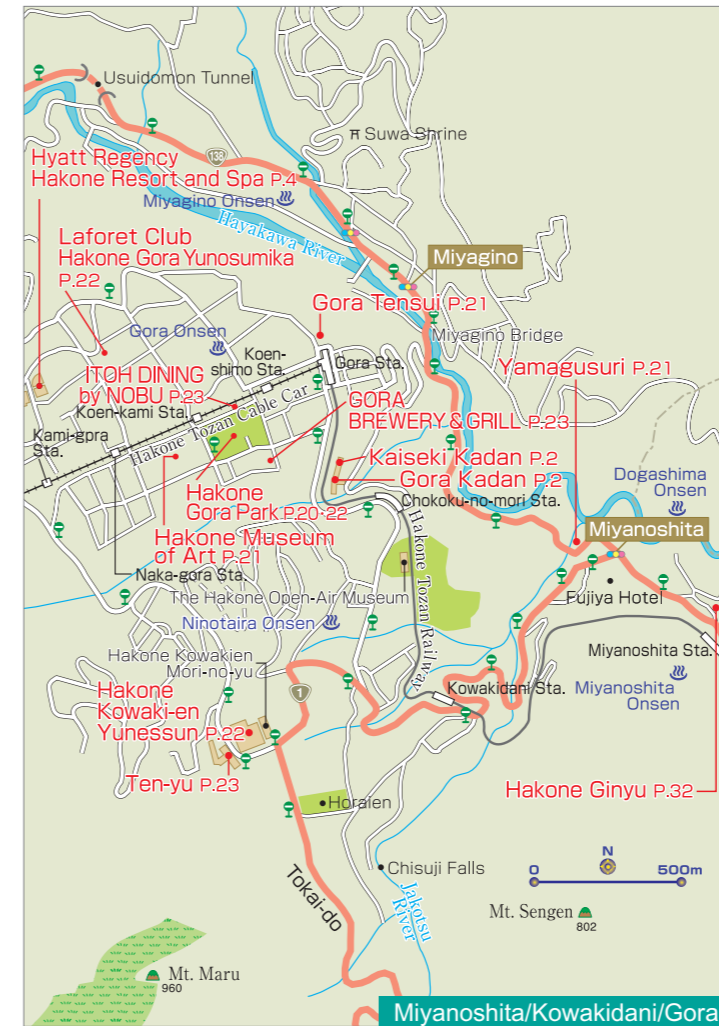
■ 9:00-16:00 ■ Daily ■ Fee: ¥500 [MAP P25 ②]

4 Forest Adventure Odawara ☎080-4330-4030

■ 9:00-17:00 ■ Closed: No fixed holidays [MAP P31]
■ Fees (accident insurance included): adults (18 and older), ¥3,600; children (1st grade, elementary school, to 17), ¥2,600 ■ Family discount available ■ Reservation required

5 Tokiwagi Gate, Odawara Castle Honmaru Hiroba ☎080-6887-2154

■ 9:30-16:00 (last admission, 15:30) ■ Daily [MAP P15]
■ Fees (costume dress-up): adults (junior high schoolers and older), ¥300; children (elementary schoolers and younger), ¥200



1 The museum's classic Japanese garden, a Registered Monument of Japan, has one of the country's finest and most diverse moss gardens.
2 Explore priceless objects have art of historical and aesthetic value, including the important cultural asset of Male figure of Haniwa from ancient Japan.

Experience the Beauty of Japan

Aesthetic pleasures await you in oldest art museum of Hakone. Stroll a Japanese garden after viewing classic pottery and tea-ceremony vessels. Or relax from a seated garden view in a tea house serving green tea and a seasonal sweet. Bring this issue and enjoy entry-fee discounts for adults (¥100) and for students (¥50).

Hakone Museum of Art 箱根美術館

☎0460-82-2623 [MAP P21]

■ 1300 Gora, Hakone-machi, Ashigarashimo-gun, Kanagawa ■ Apr.-Nov.: 9:30-16:30 / Dec.-Mar.: 9:30-16:00 (last admission 30 mins. before closing) ■ Closed Thur. (open if a holiday / Nov.: open daily) ■ Entry fees: adults, ¥900; high school and university students, ¥400; junior high school students and younger, free ■ A minute's walk from Koenkama Station (Hakone Tozan Cable Car) ■ <http://www.moart.or.jp/hakone/en>



1 Relax and enjoy a varied sweets set with nonalcoholic drink (¥1,300~) at a café offering superb views.
2 Check in while unwinding in a footbath.

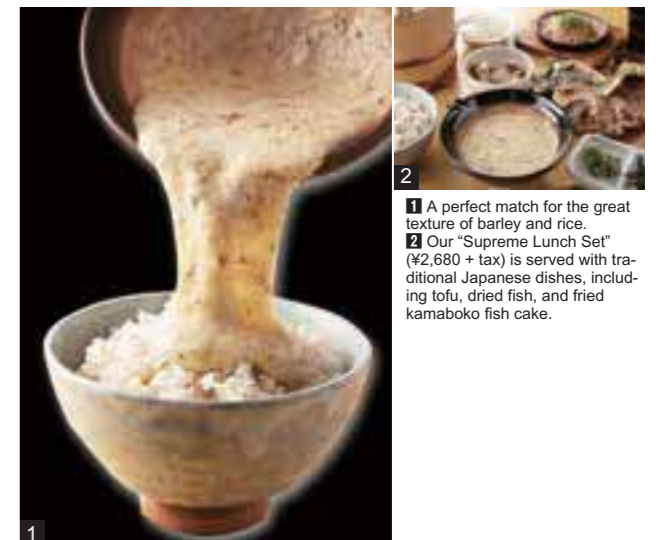
Premier Stay in Elegant Hot-Spring Inn

Check in while enjoying the luxury of a welcome drink and footbath from a table in the café-bar. In addition to an open-air bath with panoramic view of the magnificent Hakone mountains, you can reserve for private use two *ganbanyoku* (bedrock baths) that soothe fatigue with negative ions and far infrared rays naturally emanating from stones. After checkout, enjoy a luxurious time at the adjacent Café de Tensui, which boasts a superb view.

Gora Tensui 強羅天翠

☎0570-062-302 [MAP P21]

■ 1320-276 Gora, Hakone-machi, Ashigarashimo-gun, Kanagawa
■ 2-minute walk from Gora Station (Hakone Tozan Railway)
■ Café de Tensui (adjacent): 11:30-14:30 (last order, 14:00); closed Tue.
■ <http://www.gora-tensui.com>



1 A perfect match for the great texture of barley and rice.
2 Our "Supreme Lunch Set" (¥2,680 + tax) is served with traditional Japanese dishes, including tofu, dried fish, and fried kamaboko fish cake.

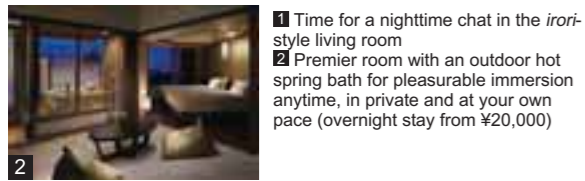
Delicious Traditional Japanese Food

Japanese yam is a beloved traditional food from ancient times. Its sticky texture is a perfect match for Japanese rice! Experience the real thing for traditional Japanese cuisine and culture with our fine set menu: tofu, dried fish, and miso soup. Consult with us as well for halal and vegetarian menu. What's more, bring this magazine when you dine at Yamagusuri and get a gift of *yosegi-zaiku* (parquetry goods).

Hakone Jinenjonomori Yamagusuri 箱根 自然薯の森 山薬

☎0460-82-1066 [MAP P21]

■ 224 Miyanoshita, Hakone-machi, Ashigarashimo-gun, Kanagawa
■ Weekdays: 10:00 - 20:30; Sat./Sun./holidays: 7:00 - 20:30 (last order, 20:00)
■ Open daily
■ 9-minute walk from Miyanoshita Station (Hakone Tozan Railway)



1 Time for a nighttime chat in the *irori*-style living room
2 Premier room with an outdoor hot spring bath for pleasurable immersion anytime, in private and at your own pace (overnight stay from ¥20,000)

Stay at a Modern Japanese Hot Spring Inn

Take off your shoes for a delightful stay amid the hospitality of our hot spring inn, and relax in a guestroom offering calm ambience, contemporary Japanese décor, and free WiFi. Luxuriate in outdoor baths set not only in a Japanese garden, a source of pride, but also some guestrooms. Good taste also awaits in our restaurant, where the latest in Japanese-Western fusion is served with a wondrous view of the Hakone mountains.

Laforet Club Hakone Gora Yunosumika
ラフォーレ倶楽部 箱根強羅 湯の楼

TEL 0460-82-2121 MAP P21
1320 Gora, Hakone-machi, Ashigarashimo-gun, Kanagawa
5-minute walk from Naka-Gora Station on Hakone Tozan Cable Car Line
http://www.laforet.co.jp/gora/



1 Savor a cup of *matcha* and *wagashi* Japanese sweets while experiencing Japanese culture. (¥500 for tea and sweets; 10:00-16:00)
2 Hakuundo Cha-en tea garden is a unique space with the ambience of a mountain hut.

Popular Matcha Experience in Hakone

Gora Park in Hakone, immersed in nature, is dotted with a botanical garden; facilities for pottery making, glass blowing and more; and dining. Highly recommended as well is the ever-popular *matcha* experience, which can be thoroughly enjoyed for the first time without knowing about manners and other details. (Wintertime remodeling is planned. Please inquire for details)

Hakone Gora Park
箱根強羅公園

TEL 0460-82-2825 MAP P21
1300 Gora, Hakone-machi, Ashigarashimo-gun, Kanagawa ■ 9:00-17:00 ■ Open daily ■ Admission: ¥550 adults, free for children (including elementary schoolers). (free admission with Hakone Freepass) ■ 5-minute walk from Gora Station (Hakone Tozan Railway) http://www.hakone-tozan.co.jp/gorapark/



01 Gaze at the endless horizon. This gorgeous open-air onsen will complete your stay at Hakone.
02 Ten-yu chefs present Japanese fusion courses with the top-quality delicacies.
03 Though all rooms have tatami mats, you can sleep on Western-style beds.

Escape to rich nature matched with stylish tradition

Welcome to Hakone Kowakien Ten-yu, a true sanctuary facing magnificent mountains in Hakone, far from your bustling city life. The concept behind a *ryokan* is the harmony of authentic Japanese hospitality and nature. You can watch the sky at sunrise while bathing in our enormous open-air onsen with an infinite horizon view. In addition, all rooms come with their own private open-air bath. In the evening, take pleasure in delicious Japanese cuisine beautifully presented at your table. Our concierge will meet every need for your honeymoon or anniversary stay. Enjoy the heavenly experience of true Japanese service during your time at Ten-yu.

箱根小涌園 天悠
Hakone Kowakien TEN-YU

TEL. +81-460-82-5111 http://www.hakone-tenyu.com/
Address: 1297 Ninotaira, Hakone-machi Check-in: 3pm Check-out: 11am Access: Approximately 20-minute bus ride from Hakone Yumoto Station (Hakone Tozan Train). Located right by the Ten-yu bus stop. Attraction: Hakone Open-Air Museum and Hakone Gora Park is only 6-minute bus ride from Hakone Kowakien Ten-yu.



KOBE BEEF TEPPANYAKI

ITOH DINING by NOBU

► Lunch Time 11:30 ~ 15:00 (last order, 14:20)
► Dinner Time 17:00 ~ 21:30 (last order, 20:30)
Open daily

1300-64 Gora, Hakone-machi, Ashigarashimo-gun, Kanagawa
TEL : 0460-83-8209



CRAFT BEER with NOBU FOOD

GORA BREWERY & GRILL

► Lunch Time 11:30 ~ 15:00 (last order, 14:20)
► Dinner Time 17:00 ~ 21:30 (last order, 20:30)
Open daily

1300-72 Gora, Hakone-machi, Ashigarashimo-gun, Kanagawa
TEL : 0460-83-8107

Let's enjoy unique spas!! YUNESSUN Spa Resort

YUNESSUN (swimsuit area)



Mori no Yu (bathing area)



Shopping



Shop "Mio Mall" is boosting the wide selection of items. You'll find Hakone souvenirs!

Restaurants



We have many kinds of restaurant: Italian, Japanese, and more that can be enjoyed by guests and non-guests alike.

Hot Spring Amusement Park and Spa Resort

Hakone Kowaki-en YUNESSUN Spa Resort has many kind of spas. You can have fun at this all-weather facility, even on rainy days. You'll find many fun spas here. And we have many kind of shops and restaurants that you can enjoy all day.

SPECIAL COUPON

000-2161

LET'S HAVE FUN YUNESSUN SPA RESORT!!

- > You can rent a swimsuit **50%OFF**
- > You can use free towels (1 set for 1 person)

	Adult	Child
Combined (YUNESSUN & Mori no Yu)	¥4,100 ▶ ¥2,800	¥2,100 ▶ ¥1,500
YUNESSUN (swimsuit area)	¥2,900 ▶ ¥2,000	¥1,600 ▶ ¥1,100
Mori no Yu (bathing area)	¥1,900 ▶ ¥1,300	¥1,200 ▶ ¥700

This is discount ticket, please show this at the front desk. Valid: 2018/6/30

Transportation (By bus and train)

- From Odawara Sta., take a bus bound for "Hakone-jinja-iriguchi/Hakonemachi-ko" and get off at "Kowaki-en" (approx. 40min.)
- From Hakone-Yumoto Sta., take a bus bound for "Hakone-jinja-iriguchi/Hakonemachi-ko" and get off at "Kowaki-en" (approx. 20min.)

Business hours [YUNESSUN] 9:00-19:00 / [Mori no Yu] 11:00-20:00

Parking fee ¥1,200/day Seniors (60 and over) and disabled get discounts. For more information, please contact to us. Child admission age starts from 3 years old to elementary school age.

Hakone Kowaki-en YUNESSUN
Tel. 0460-82-4126
Spa Resort

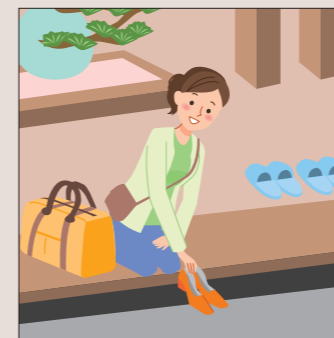
1297, Ninotaira, Hakone-machi, Ashigarashimo-gun, Kanagawa-Japan 250-0407

https://www.yunessun.com/en/

Point 3

Japanese Customs for Rooms and Meals

Please take particular care for characteristic Japanese culture and customs when eating meals or staying at *ryokan* (Japanese-style inns) which have a traditional Japanese atmosphere.



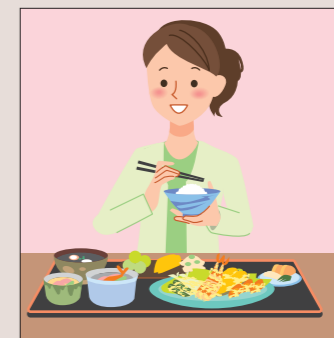
1 It is standard to remove your shoes in the entry hall before entering a room.

In the front entryway take off your shoes while facing forwards and then enter the room. You should then bend down and turn your shoes to face the other way, aligning them neatly.



3 Try wearing your yukata around the ryokan.

A yukata is a traditional type of Japanese clothing, often worn after bathing or while sleeping. Be sure to cover your body first with the right-hand side, then left-hand side. When staying at a ryokan, you're welcome to wander around in yukata.



2 Bowls should be held in your hand when eating.

The bowl containing your rice as well as your soup bowl and other bowls should all be held in your hand while eating from them. Don't squeeze the chopsticks too strongly, hold them vertically, cross them over, or stab your food with them.

Simple Facts about Japanese-Style Rooms and Tatami Mats

- A Japanese-style room is one laid with tatami mats. One appealing feature is the rooms may be used for many purposes, such as a living room, bedroom, or guest room. A single tatami mat is roughly 180 cm x 90 cm, and is counted as 1 'jo' (a specific Japanese counter for tatami mats).
- Tatami mats provide Japan-style flooring. The face of tatami mats is woven grass, meaning they are highly absorbent, warm in winter, and cool in summer. Their fragrance also has a relaxing effect.

Point 4 Shrine and Temple Etiquette

Shrines are dedicated to Shinto gods, and temples to Buddhist figures such as bodhisattvas and various incarnations of Gautama. In both of these sacred places you should move and act calmly and speak quietly.

1 Bow slightly before entering a shrine's torii or a temple gate

The ground and space beyond a shrine's torii or a temple gate are considered sacred. Bow slightly before passing through torii or temple gate. As the center of the shrine walkway is the path of a sacred being, visitors should walk slightly to the right or left.



2 Rinse hands and mouth at the chozuya (ritual ablution pavilion)

After passing through shrine or temple entry, you'll find a small pavilion for rinsing hands and/or mouth before you step up to the sacred space occupied by shrine god or Buddhist deity.

Perform the ablution in five simple steps: ① with your right hand, dip the ladle into water and rinse your left hand; ② switch hands and rinse your right hand; ③ take the ladle with your right hand and pour some water into your left palm, and raise that cupped water to your mouth and rinse (taking care that your mouth does not directly contact any part of the ladle); ④ pour water onto your left hand to cleanse it; ⑤ raise the ladle cup straight up, perpendicular to the ground, to let the remaining water pour down the handle and clean it, and then return the ladle to its original spot on the fountain, face down.

3 Offering Ritual: Ring bell and toss money into offering chest

These days coins or bills are used as an offering to deities. In the past, these were made in the form of rice. There is no set amount to offer, so you should decide how much to give according to your wish or prayer, purification ritual, gratitude, or other matter. Temples usually don't have a rope pull, but if there is one, do as in a shrine; if none, make your silent pronouncement and toss gently into the slatted grate atop the offering chest.



4 Shrine Salutation: Bow twice, clap twice, and bow once to greet the deity

Bow deeply before a shrine's outer sanctuary and then make two bows, each at a 90-degree angle. Raise hands to chest center, Western-prayer style, and clap twice at a shrine but not a temple. Return hands to chest center and pray. Lower hands to sides and bow once, at a 90-degree angle. Bow again, deeply, and step back.

5 Shrine and Temple Option: amulet or paper votive

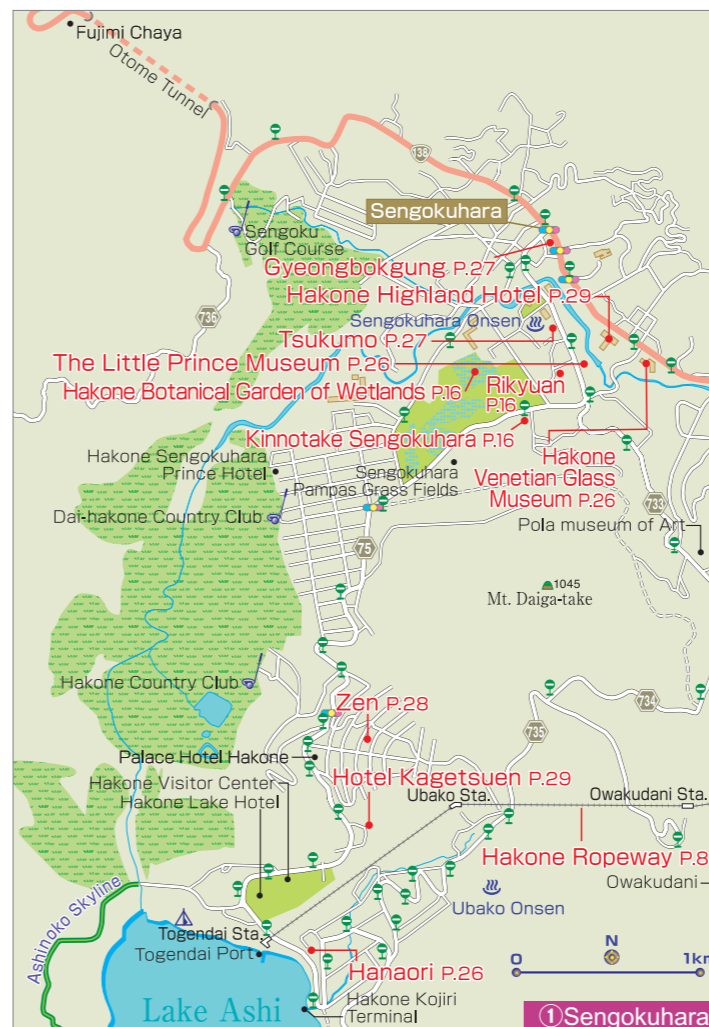
After making an offering, many visitors stop by a building where votives and amulets are sold. They also often draw paper fortunes. An amulet is worn to receive the deity's blessing; a paper votive is read to learn one's fortune. You also have the choice, according to custom, to tie the paper votive on a branch of a tree—on temple or shrine grounds—or you can take it home.



Distinguishing points of a temple

- Temples usually do not have torii but a formal structure of wood, often two stories high, as their gate. Bow slightly before passing through the overhead structure.
- When making offerings or praying at a temple, do not clap the hands. Bow deeply and then bring hands together, chest center (Western-prayer style), as you make your pronouncement.

(with thanks to Hakone Shrine)



Your Main Stop for Udon

Ore no Udon Aka®, winning third in Japan's No.1 udon competition, is characterized by eater-friendly noodles with glutinous texture, mild not spicy, afloat in a crimson soup of savory stock—a specialty available only here. Unagi Gozen eel set (¥3,200) is a limited service for 50 people per day. Succulent ramen (¥850) is also popular.

Ore no Udon Aka® Main Shop

- ☎ 0460-83-8063 MAP P25 ②
- 15 Hakone, Hakone-machi, Ashigarashimo-gun, Kanagawa
 - 11:00-16:00 ■ Closed Tue.
 - 45 minutes by bus from Hakone-Yumoto Station (Hakone Tozan Railway)



Scrumptious Sizzlin' Chicken

Everyone will ooh and ahh when biting into this scrumptious deep-fried chicken (kara-age), created by the owner after years of endless variations and a fine match for wine. Marinated in herbs and white wine, this kara-age comes up crisp yet moist and tender. Lunch comes with bread made with Guinness beer, salad, soup, fruit, and drink choice.

Hakone Karaage Karatto

- ☎ 0460-83-5008 MAP P25 ②
- 10 Moto-Hakone, Hakone-machi, Ashigarashimo-gun, Kanagawa
 - 11:00-19:00 ■ Closed Wed.
 - 40-minute bus ride from Hakone-Yumoto Station (Hakone Tozan Railway)

1 Highly touted terrace with sitting well makes you feel afloat in the lake.
 2 & 3 Viewing Lake Ashi while soaking in the bath is sure to remove travel fatigue. 2-minute walk from Togendai Station. Overnight stay (2 adults/room; breakfast & dinner) starts at ¥13,500 (tax excluded) per person.



Superb Views of Lake Ashi At a Soothing Hot Spring Hotel

This renowned hotel providing superb views of Lake Ashi in every season and hot springs will invite you to take off your shoes and unwind in guestrooms of Japanese-Western style. Some luxurious guestrooms have a terrace offering magnificent lake views and private open-air bathing. Buffet dinner features new washoku dishes in season. Experience a matchless stay while enjoying this distinct Lake Ashi resort.

Hakone Ashinoko Hanaori
 箱根・芦ノ湖 はなをり

☎0557-86-4716 (Reservations) MAP-P25 ①
 ■ 160 Moto-Hakone, Hakone-machi, Ashigarashimo-gun, Kanagawa
 ■ Reservations: 9:00-18:00
 ■ 40-minute bus ride from Hakone-Yumoto Station (Hakone Tozan Railway)
 ■ <https://hanaori.jp/ashinoko/>



Original Jinenjo Soba in a White House

Specialty soba (buckwheat noodles) will delight your palate in a grand mansion of white façade and eclectic Japanese-Western interior. Trained in a longstanding traditional shop, the owner creates original soba in accord with the day's temperature and humidity. Kneading *jinenjo* (Japanese yam) into soba flour results in al dente noodles of excellent texture, superbly matched by a fragrant soup made with two kinds of bonito flakes. A la carte menu includes roast duck that goes well with wine or Japanese sake.

1 Choose three appetizers from nine when ordering our popular Soba Gozen menu.
 2 Open interior is impressive.
 3 Richly varied dishes go quite well with wine or Japanese sake.



Jinenjosoba Hakone Tsukumo
 じねんじょ蕎麦 箱根 九十九

☎0460-84-0899 MAP-P25 ①
 ■ 917-11 Sengokuhara, Hakone-machi, Ashigarashimo-gun, Kanagawa
 ■ 11:00-20:30 (last order, 20:00) ■ No fixed holidays ■ Parking available
 ■ 25-minute bus ride from Hakone-Yumoto Station (Hakone Tozan Railway)
 ■ <http://www.hakone-soba.com/>



1 Enjoy a panoramic view of Owakudani from the garden.
 2 Also attractive is our cafe-restaurant, with professional Italian singers performing *canzone*.

Enter a Magical World of Glass

Our extensive museum collection showcases not only Venetian glass that aroused the interest of European royals and nobles for 300 years, from the 16th to the 19th century, but also innovative creations by contemporary artists active in the 21st century. This is the only art museum in Japan where you can see an entire work of Venetian glass.

Hakone Venetian Glass Museum
 箱根ガラスの森美術館

☎0460-86-3111 MAP-P25 ①
 ■ 940-48 Sengokuhara, Hakone-machi, Ashigarashimo-gun, Kanagawa ■ 10:00-17:30 (last admission: 17:00) ■ Open daily (excluding 11 days after the second Monday of January) ■ Admission fees: adults, ¥1,500; high school and university students, ¥1,100; primary and junior high students, ¥600. ■ 25-minute bus ride from Hakone-Yumoto Station (Hakone Tozan Railway) ■ <http://www.ciao3.com>

The Little Prince Museum

箱根サンシャイン MUSEE DU PETIT PRINCE DE SAINT-EXUPERY A HAKONE TBS

Romantic Starry Night
 from Nov.3,2017 to Jan.8,2018

Museum 9:00~18:00 (last admission 17:00)
 Exhibition hall business hours 9:00~17:30
 Video hall screening hours 9:00~17:30

Restaurant 11:00~18:00 (last order 17:30)
 Lunch Time 11:30~17:00, last order

Audio guide app (free trial version)

Android iPhone

909 Sengokuhara, Hakone-machi, Ashigarashimo-gun, Kanagawa-ken
 TEL:0460-86-3700 <http://www.tbs.co.jp/l-prince/en/>
 Le Petit Prince™ Succession Antoine de Saint-Exupéry Licensed by 聖レ Petit Prince™ 星の王子さま™



1 Relax and enjoy your meal in our modern seating, with sunken-style low tables. We also offer transportation to and from the station.

Popular Yakiniku with Our Inherited Secret Sauce

Cook flavorful Wagyu beef in a smokeless roaster and dip it in our inherited secret sauce. We offer an extensive a la carte menu of healthy Korean cuisine, and our special cold noodles are so popular they've been featured on TV.

Korean Cuisine Yakiniku Gyeongbokgung
 韓国料理・焼肉 景福宮

☎0460-84-5529 MAP-P25 ①
 ■ 74-1 Sengokuhara, Hakone-machi, Ashigarashimo-gun, Kanagawa
 ■ Lunch:11:30-14:00 / Dinner:17:30-22:00 ■ No fixed holidays
 ■ 25-minute bus ride from Hakone-Yumoto Station (Hakone Tozan Railway)



1 From the museum observation gallery perched atop a small hill, you can enjoy an emblematic view of Japan created by Lake Ashi and Mt. Fuji.
 2 Maiko by Sho Ishimoto.

Nihonga Museum with a Magnificent View

The museum overlooks Lake Ashinoko, and on a clear day you can see Mt. Fuji. There are art exhibitions showcasing various themes centering on Nihonga selected from 4,000 pieces in our collection, ranging from works by great masters to fresh young talent. Enjoy tea served in artistic ceramics at the tea lounge. Hot sandwiches and pizza are also available.

Hakone Ashinoko Narukawa Art Museum
 箱根・芦ノ湖 成川美術館

☎0460-83-6828 MAP-P25 ②
 ■ 570 Moto-Hakone, Hakone-machi, Ashigarashimo-gun, Kanagawa
 ■ 9:00-17:00 (last admission: 16:45) ■ Open daily ■ Admission: adults, ¥1,300; high school and university students, ¥900; primary and junior high students, ¥600.
 ■ 35-minute bus ride from Hakone-Yumoto Station (Hakone Tozan Railway)
 ■ <http://www.narukawamuseum.co.jp>



1 With our exclusive lobby view of Mt. Fuji, you'll think Japan's most famous mountain was there just for you!
2 Hot spring with a fabulous view of Mt. Fuji. Room rates per person from ¥13,500 for overnight stays with breakfast.

Matchless View of Mt. Fuji

LaLa Gotenba offers our guests an uncompromising, matchless view of Mt. Fuji from specially located guestrooms as well as a brilliant night view of the city from outdoor baths and guestroom verandas. Enjoy exciting sight-seeing and shopping from our convenient location, just 10 minutes by car to Gotemba Premium Outlets. Express bus service from Haneda and Shinjuku to Gotemba Interchange approx 1.5-hour bus ride from Shinjuku Station.

LaLa GOTENBA Hotel & Resort
LaLa GOTENBA ホテル&リゾート

☎ 0120-620-980 **MAP** P 30
■ 2571 Fukasawa, Gotemba-shi, Shizuoka Prefecture
■ 40-minute bus ride from Hakone-Yumoto Station (Hakone Tozan Railway)
■ <http://www.lala-gotenba.com>



1 Kinubiki Tempura Shoga Udon, ¥1,404.
2 Kinubiki Tenseiro, ¥1,944. Washoku artisanal cooks create dishes with such appeal that Japanese as well as Hollywood stars travel far and wide to be here.

Renowned and Novel Noodles

Kinubiki Udon offers finely rendered *udon* noodles of the highest-grade Japanese wheat and well-known Hakone water, kneaded together with grated Japanese burdock and sesame. This trademark udon is registered and enjoyed only in this restaurant.

Kinubiki no Sato 絹引の里

☎ 0460-83-5151 **MAP** P25 ②
■ 6-10 Moto Hakone, Hakone-machi, Ashigarashimo-gun, Kanagawa
■ Daily Hours (with seasonal variation): 11:00-18:00, last order
■ 40-minute bus ride from Hakone-Yumoto Station (Hakone Tozan Railway)
■ <http://www.kinubikinosato.jp> (in Japanese)



1 Room rates per person: overnight with two meals, from ¥11,000 (plus tax). Day trip, including bathing fees (11:00-15:00): adults, ¥1,500 (plus tax); children, ¥1,000 (plus tax).
2 From the deluxe suite you have a superb view of the Hakone mountain range—all to yourself.

Inn with Superb View of Mt. Fuji and Four Sulfur Hot Springs

Our Wi-Fi enabled guestrooms have large windows, with some on the garden side looking out over Mt. Fuji. We have two types of hot springs, with four opaque sulfur springs you can reserve free of charge. For dinner, try our seasonal Japanese/Western dinner tray, as beautiful as it is delicious.

Hotel Kagetsuen ホテル花月園

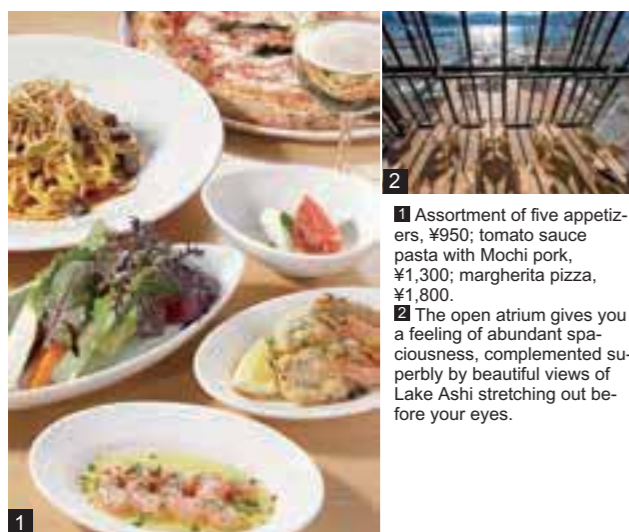
☎ 0460-84-8621 **MAP** P25 ①
■ 1244-2 Sengokuhara, Hakone-machi, Ashigarashimo-gun, Kanagawa
■ 40-minute bus ride from Hakone-Yumoto Station (Hakone Tozan Railway)
■ <http://hotel.kagetsuen.net/>



A resort hotel by Lake Ashi, with views of the peak of Mt. Fuji.



■ 65 Hakone, Hakone-machi, Ashigarashimo-gun, Kanagawa, 250-0521, JAPAN
■ Tel: +81-460-83-6311 ■ <http://www.hakonehotel.jp/en/>



1 Assortment of five appetizers, ¥950; tomato sauce pasta with Mochi pork, ¥1,300; margherita pizza, ¥1,800.
2 The open atrium gives you a feeling of abundant spaciousness, complemented superbly by beautiful views of Lake Ashi stretching out before your eyes.

Italian Cuisine on the Lakeside

With 30 varieties of pizza baked in a large Italian pizza oven, we offer you a genuine taste of Italy! You can enjoy delicious Italian cuisine with cheeses and wines crafted in Italy. Next door you'll find a museum, a specialty shop, and a bookstore selling watercolors by Toyoo Tamamura.

Ashinoko Terrace Italian Restaurant La Terraza
芦ノ湖テラス イタリアンレストラン ラ・テラッツァ

☎ 0460-83-1074 **MAP** P25 ②
■ 61 Moto-Hakone, Hakone-machi, Ashigarashimo-gun, Kanagawa
■ Weekdays: 10:30-20:00; Sat./Sun./holidays: 9:00-20:00 (last order, 19:30)
■ Open daily (except February) ■ 40-minute bus ride from Hakone-Yumoto Station (Hakone Tozan Railway) ■ <http://www.la-terrazza-ashinoko.co.jp>



1 A refined yet relaxed interior. What's more, guestrooms let you enjoy the magnificence of nature, while rooms on the top floor command a spectacular view of Mt. Fuji.
2 Japanese-style creations are served for dinner. The photograph shows an example.

Enjoy a Private Open-Air Bath

This is a quiet forest inn in Sengokuhara. All 9 rooms have cypress-lined open-air baths, allowing you to privately enjoy the active hot spring waters that flow continuously. Please enjoy our Japanese-style creations for dinner, made with fresh coastal fish and fresh local vegetables.

Hakone Yuyado Zen 箱根湯宿 然

☎ 0460-84-2400 **MAP** P25 ①
■ 1245-96 Sengokuhara, Hakone-machi, Ashigarashimo-gun, Kanagawa
■ 40-minute bus ride from Hakone-Yumoto Station (Hakone Tozan Railway)
■ Phone reservation time: 10:00-20:00



Enjoy sophisticated lunches at the hotels in Hakone.

HÔTEL DE YAMA
Enjoy beautiful French or Japanese cuisine in the restaurants at Hôtel de Yama overlooking Lake Ashi.

French Restaurant Vert Bois Opening hours: 11:30 a.m. - 2:00 p.m. Lunch course: From 3,326 yen
Japanese Restaurant Tsutsuji-no-Chaya Opening hours: 11:30 a.m. - 2:00 p.m. Lunch course: From 2,138 yen



Address 80 Moto-Hakone, Hakone-machi, Ashigarashimo-gun, Kanagawa 250-0522
Visit our website. www.hakone-hoteldeyama.jp/en/
For inquiries, please call 0460-83-6321

HAKONE HIGHLAND HOTEL
Proudly presenting French japonais cuisine, featuring a main dish baked in a firewood stove, at Hakone Highland Hotel in Sengokuhara.

Restaurant La Forêt Opening hours: 11:30 a.m. - 2:00 p.m. Lunch course: From 3,326 yen
Lounge Opening hours: 9:30 a.m. - 9:00 p.m. Seasonal dessert: From 594 yen



Address 940 Sengokuhara Shinanoki, Hakone-machi, Ashigarashimo-gun, Kanagawa 250-0631
Visit our website. www.hakone-highlandhotel.jp/en/
For inquiries, please call 0460-84-8541

Staff
Publisher
 Kazuhiro Nakamura

Editor in Chief
 Yoshiko Maki

Deputy Editor in Chief
 Koichiro Uramoto

Sales & Promotion Staff
 Sonomi Fujisawa
 Mikimaro Momose

Editor
 Kayoko Aihara Hiroko Matsubayashi
 Yoshiko Kanai

Designer
 Yukako Miyazawa Kana Inaba
 NIPPON PRICOM,inc.

Photographer
 Junichi Ihara Megumi Sakurai

Map Design
 Shigeko Kobayashi

DTP Staff
 Junna Shirasawa

Special Thanks
 McDAVIS ASSOCIATES,INC.
 NIPPON PRICOM,inc.

Cooperation 協力
 Odakyu Electric Railway Co., Ltd.
 小田急電鉄株式会社
 Odakyu Hakone Group
 小田急箱根グループ
 HAKONE TOWN
 箱根町
 HAKONE Convention Bureau
 箱根コンベンションビューロー
 Hakone Town Tourist Association
 一般財団法人箱根町観光協会
 Odawara City
 小田原市

Issue 発行
 INCLUBE Co., Ltd.
 株式会社インクルーブ

http://www.mismonet.com

本誌の広告に関するお問い合わせは
 株式会社インクルーブ
 〒215-0021
 神奈川県川崎市麻生区上麻生1-5-1
 りそな新百合ヶ丘ビル5F
 営業企画部 ☎044-959-3750

Printing and bookbinding 印刷・製本
 SANKEI SOGO PRINTING Corporation
 サンケイ総合印刷株式会社

次号は2018年5月発行予定です。



- A** Odawara 小田原
- B** Hakone-Yumoto 箱根湯本
- C** Miyanoshita / Kowakidani / Gora
宮ノ下・小涌谷・強羅
- D** Sengokuhara 仙石原
- E** Lake Ashi 芦ノ湖

Hakone/Odawara MAP

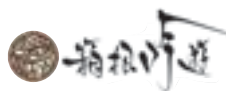


HAKONE GINYU

連山を見渡し
山紫水明の
境に遊ぶ



*The guest feel 5 senses in scenery and find so many impression,
This is our Ryokan concept.*



TEL. 0460-82-3355