

JAPAN



2018
Summer/
Autumn

vol.8

FREE

English
英語版

HAKONE / ODAWARA / Mt. FUJI VISITOR'S GUIDE

Detailed
MAP
Included

箱根



Mt. Fuji and Lake Ashi



- Breathtaking Views of Mt. Fuji
- Hakone's Various Rides
- Experience Hakone

Japanese Culture and Etiquette

Mi-s-mo
【ミスモ*はこね】

“A most exclusive Japanese retreat”



stonebath opened

A stay in Gôra Kadan, the former retreat of the Imperial Family, Kanin-no-miya, situated in the heart of Hakone National Park, is an invitation to bring your five senses to life by immersing yourself in the ancient Japanese way of life.

The rooms have been designed in a minimalist style, and the hotel's facilities include a swimming pool, stonebath, hammam a spa, and a beauty salon.



ALL AROUND THE WORLD, UNIQUE IN THE WORLD Our 500 restaurants & hotels offer the finest experiences all over the world.

Hotel

GÔRA KADAN

2 guests occupancy 51,500~92,700yen
Room charge half board (dinner & breakfast) per person, per night.
All prices excluding tax/including service charge.

Tel. +81(0)460-82-3331

✉ reservation@gorakadan.com

Restaurant

Kaiseki KADAN 懐石料理 花 壇

located inside the luxurious inn GÔRA KADAN

Restaurant of the Kaiseki cuisine

Tel. +81(0)460-82-3333

✉ kadan@gorakadan.com



Contents

- 5 Getting to Hakone
- 6 Breathtaking Views of Mt. Fuji
- 8 Let's Enjoy Hakone's Various Rides!
- 10 Recommended Courses to Enjoy Hakone
- 11 Transportation HAKONE KAMAKURA PASS,
Tickets information
- 12 Must See in Hakone
- 24 Experience Hakone

Area Attractions

- 16 Odawara
- 18 Hakone-Yumoto
- 21 Miyanoshita, Kowakidani, Gora
- 26 Sengokuhara, Lake Ashi
- 30 Hakone / Odawara Map

Culture and Etiquette

- 4 Simple Japanese
- 7 Shrine and Temple Etiquette
- 17 Japanese Customs for Rooms and Meals
- 23 Pointers on Bathing Etiquette

Hakone, known for its natural beauty that changes expressions with the seasons, is full of charms -- hot springs, museums and art galleries, historical buildings, leisure facilities, fantastic food and glorious view of Mt. Fuji, the world's cultural heritage site.

Please visit Hakone that made tourists of the world a captive, and make lots of memories there.

Information published in this magazine is as of May, 2018. There may be cases of prices having been changed since then, so please check with the stores before use. And there are instances of consumption tax or bathing tax, other service fees applied separately. The overnight stay prices are a single person charge on weekday (Monday to Thursday and Sunday, excluding the day before a holiday) overnight stay with two meals, for a room by two persons unless otherwise stated. ※ The details of what have been referred in this magazine could be changed or discontinued due to weather or other reasons. Please check with the organizer/facility/store before heading out.

Please note that the opening/business hours, charges, closed days, event opening periods and menu contents of facilities and stores published in this magazine are subject to change without notice.

Unauthorized reproduction/copying of photographs, illustrations, maps or articles in this magazine are strictly forbidden.



A feast for all
your senses.
Make the most
of being away.

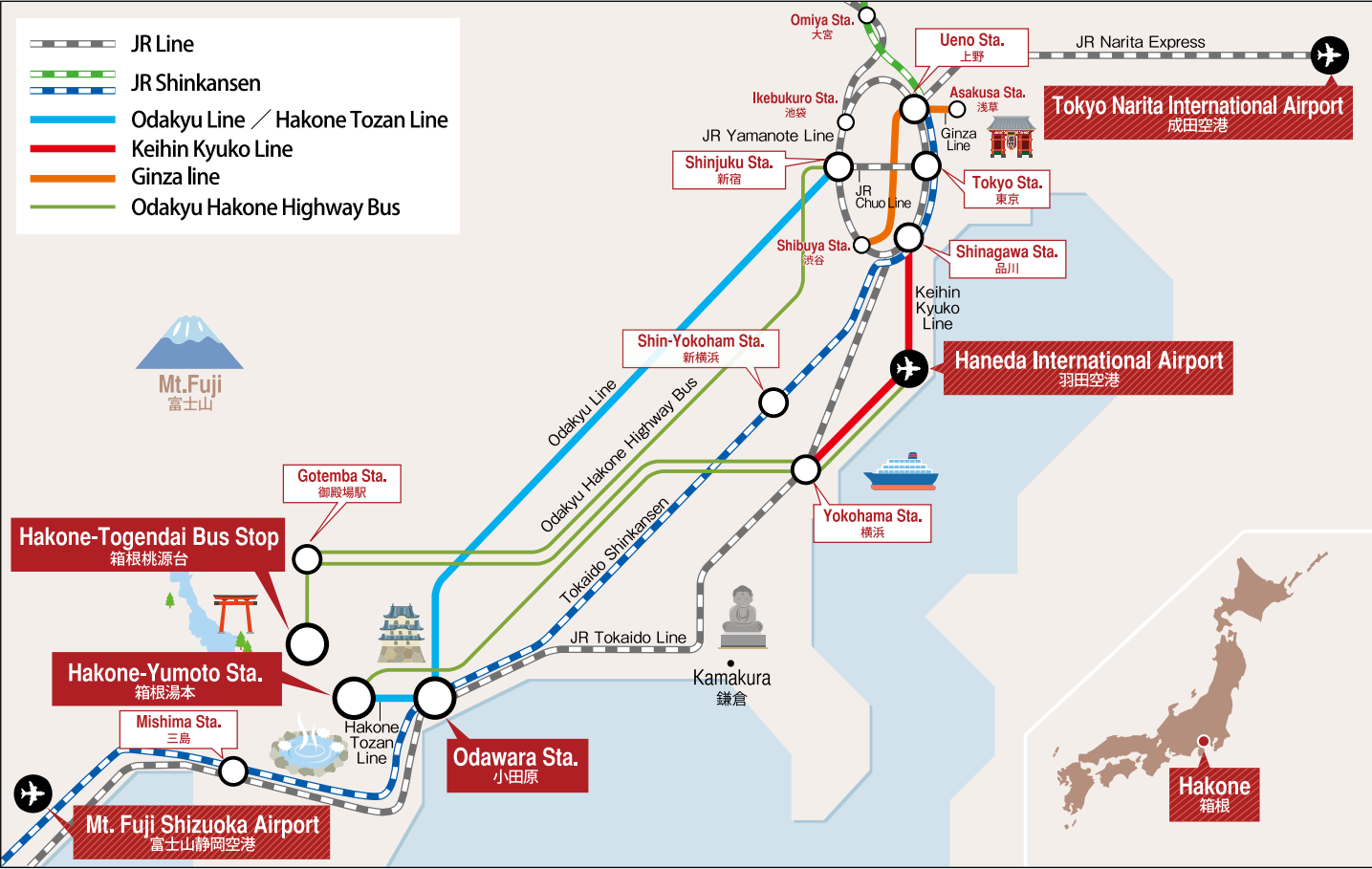
Pristine mountain forests. World-famous hot springs
and cuisine. Relax and savor this rare pairing of luxurious
comfort with classic Japanese style and hospitality.

Tel. 0460-82-2000
hakone.regency.hyatt.com

**HYATT REGENCY HAKONE
RESORT AND SPA**
1320 Gora, Hakone-Machi
Ashigarashimogun, Kanagawa 250-0408

HYATT name, design and related marks are trademarks of Hyatt Corporation.
©2017 Hyatt Corporation. All rights reserved.

Getting to Hakone



Point 1

Simple Japanese

If you can learn some simple Japanese, it will be useful when trying to communicate.

Greeting and Daily Conversation

Yes / No hai / iie
Good Morning ohayo (gozaimasu)
Hello konnichiwa
Good evening konbanwa
Goodbye sayonara
Thank you arigato (gozaimasu)
Excuse me sumimasen
I'm sorry gomennasai
It's delicious oishi

Shopping and Eating

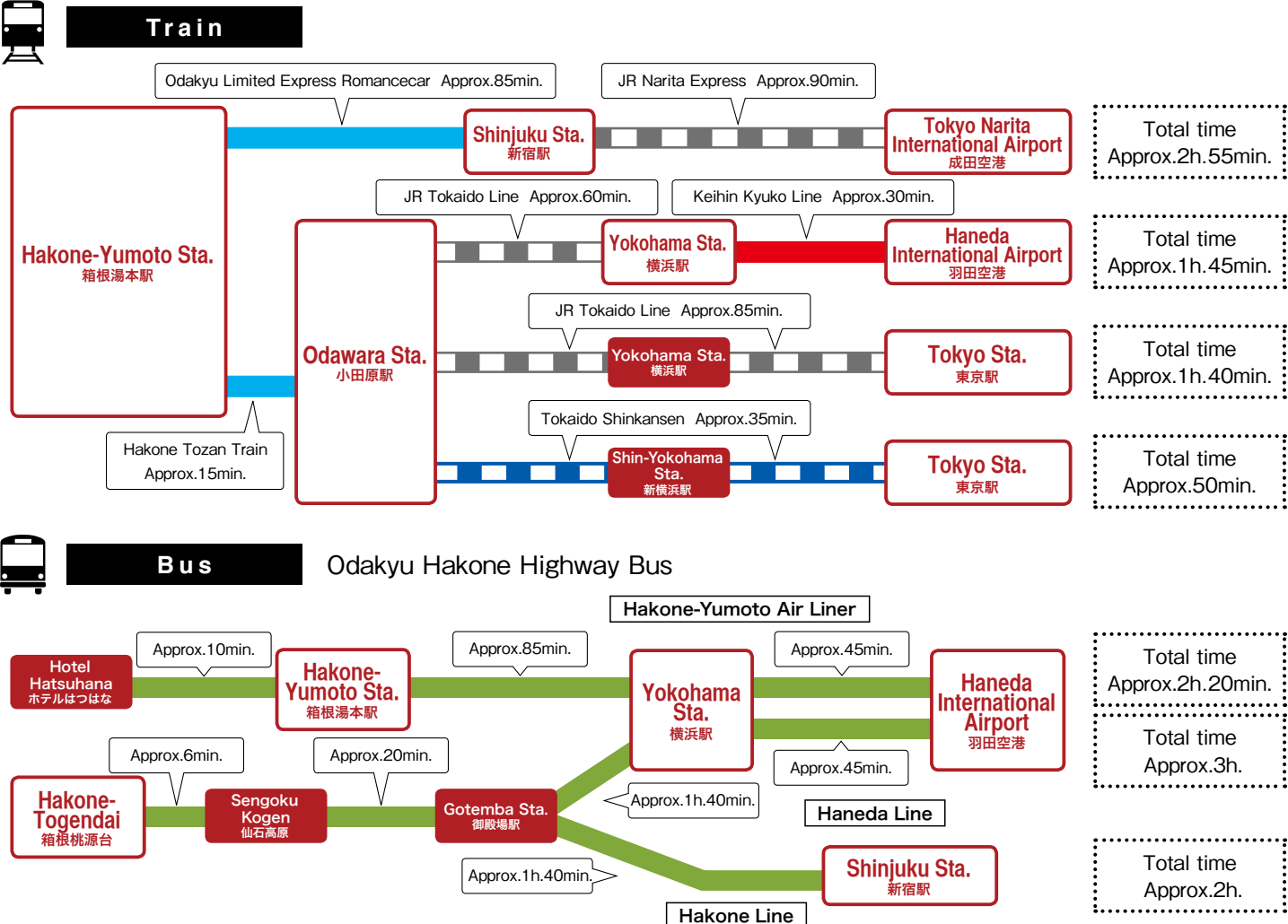
How much is it? Ikura desu ka?
What do you recommend? Osusume wa nani desu ka?
What is this? Kore wa nani desu ka?
Do you have ○○? ○○ wa arimasu ka?
I'll have this, please. Kore o kudasai
Can I pay using my creditcard? Kurejitto Kādo de shiharai dekimasu ka?

Sightseeing

Where is the ○○? wa doko desu ka?
I want to go to ○○. ni ikitai desu

Toilet..... toire	Tourist office kanko annaijo
Station eki	Hospital byouin
Bus Stop basunoriba	

How long will it take? Jikan wa dore gurai kakarimasu ka?
Could you please take my/our picture. Shashin o totte kudasai
Can you speak English? Eigo wa hanasemasu ka?
I lost my ○○. ○○ o nakushimashita



*It is an example. Estimated time is subject to change depending on operation and road condition.

Breathtaking Views of Mt. Fuji

Mt. Fuji, symbolic home to Japanese people, became a World Cultural Heritage site by virtue of its beauty and being a source of spiritual as well as artistic inspiration. Experience all the joys of uniquely viewing Japan's sacred peak from Sengokuhara and Moto-Hakone areas.



from Mt. Kintoki



from Owakudani



from Lake Ashi



C



D

Point 2

Shrine and Temple Etiquette

Shrines are dedicated to Shinto gods, and temples to Buddhist figures such as bodhisattvas and various incarnations of Gautama. In both of these sacred places you should move and act calmly and speak quietly.



1 Bow slightly before entering a shrine's torii or a temple gate

The ground and space beyond a shrine's *torii* or a temple gate are considered sacred. Bow slightly before passing through torii or temple gate. As the center of the shrine walkway is the path of a sacred being, visitors should walk slightly to the right or left.



2 Rinse hands and mouth at the chozuya (ritual ablution pavilion)

After passing through shrine or temple entry, you'll find a small pavilion for rinsing hands and/or mouth before you step up to the sacred space occupied by shrine god or Buddhist deity.

Perform the ablution in five simple steps: ① with your right hand, dip the ladle into water and rinse your left hand; ② switch hands and rinse your right hand; ③ take the ladle with your right hand and pour some water into your left palm, and raise that cupped water to your mouth and rinse (taking care that your mouth does not directly contact any part of the ladle); ④ pour water onto your left hand to cleanse it; ⑤ raise the ladle cup straight up, perpendicular to the ground, to let the remaining water pour down the handle and clean it, and then return the ladle to its original spot on the fountain, face down.



3 Offering Ritual: Ring bell and toss money into offering chest

These days coins or bills are used as an offering to deities. In the past, these were made in the form of rice. There is no set amount to offer, so you should decide how much to give according to your wish or prayer, purification ritual, gratitude, or other matter. Temples usually don't have a rope pull, but if there is one, do as in a shrine; if none, make your silent pronouncement and toss gently into the slatted grate atop the offering chest.



4 Shrine Salutation: Bow twice, clap twice, and bow once to greet the deity

Bow deeply before a shrine's outer sanctuary and then make two bows, each at a 90-degree angle. Raise hands to chest center, Western-prayer style, and clap twice at a shrine but not a temple. Return hands to chest center and pray. Lower hands to sides and bow once, at a 90-degree angle. Bow again, deeply, and step back.

5 Shrine and Temple Option: amulet or paper votive

After making an offering, many visitors stop by a building where votives and amulets are sold. They also often draw paper fortunes. An amulet is worn to receive the deity's blessing; a paper votive is read to learn one's fortune. You also have the choice, according to custom, to tie the paper votive on a branch of a tree—on temple or shrine grounds—or you can take it home.



Distinguishing points of a temple

- Temples usually do not have torii but a formal structure of wood, often two stories high, as their gate. Bow slightly before passing through the overhead structure.
- When making offerings or praying at a temple, do not clap the hands. Bow deeply and then bring hands together, chest center (Western-prayer style), as you make your pronouncement.

(with thanks to Hakone Shrine)

Let's Enjoy Hakone's Various Rides!

Whether cruising through the sky, crossing a lake, ascending or descending mountain trails on wheels or ropeway, Hakone boasts exciting ways to go and a chance to experience magnificent nature.



Fully experience nature's finest from the sky

Enjoy Heavenly Views



Hakone Ropeway

☎0465-32-2205
www.hakoneropeway.co.jp/foreign/en/

Enjoy the views during a 30-minute ride across 4 kilometers between Sounzan and Togendai stations, including the amazing Owakudani volcanic valley, Lake Ashi, and magnificent Mt. Fuji.

Hakone Tozan Cable Car

Travels at approximately 1.2 kilometers to connect Gora and Sounzan stations in 10 minutes.



Hakone Tozan Railway

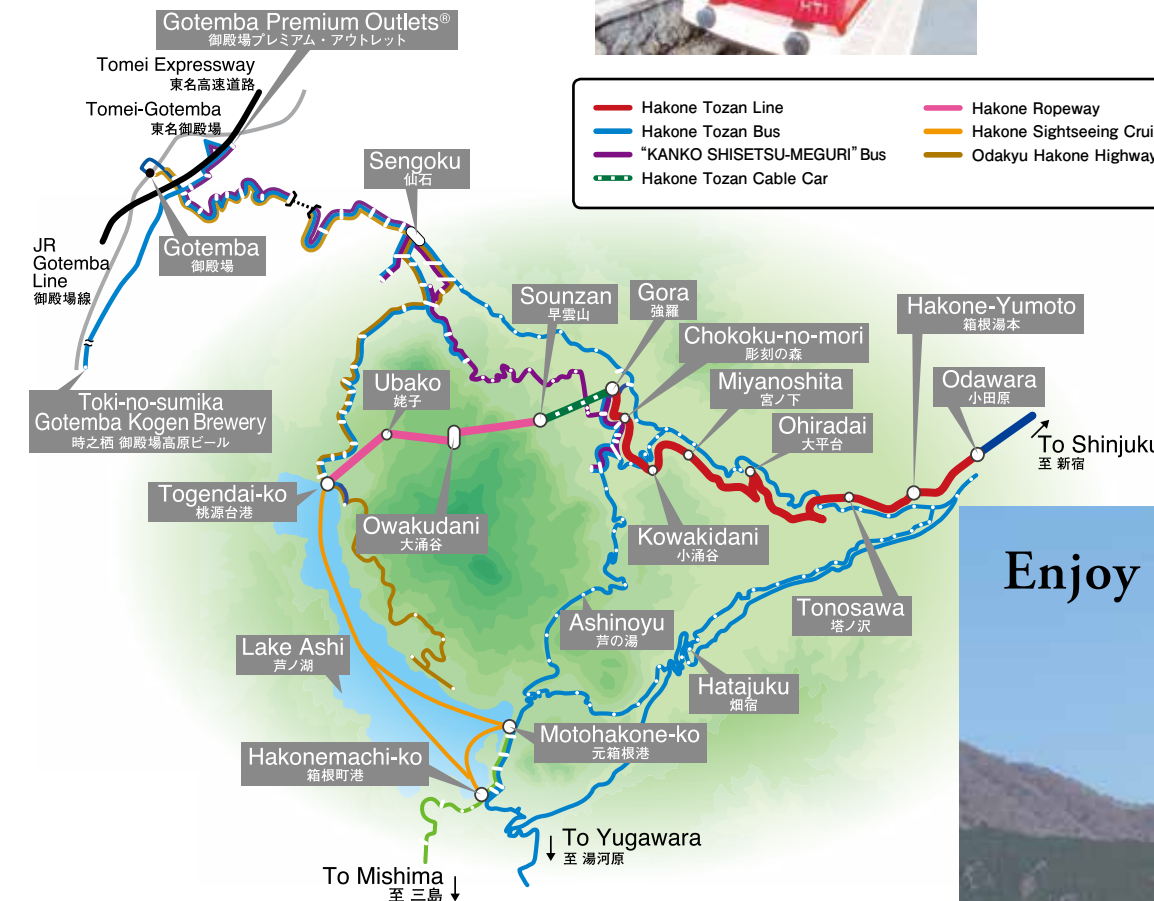
Travel from Odawara to Gora stations while enjoying the surrounding wilderness and breathtaking views from railroad bridges.

Steepest pitch in Japan

Between Hakone-Yumoto and Kowakidani stations is an 80/1000 gradient, the steepest in Japan for an adhesion railway.

Switchback

The railcar climbs the steep incline in a switchback zig-zag, changing directions back and forth.



Owakudani original curry and rice with soft-boiled egg



Owakudani Ekisyokudo
(The restaurant in Owakudani Station)

Note: Access to the Owakudani area may be restricted due to volcanic gas emission.

Enjoy 130-meter view!

Sounzan Station is 757 meters high, and Owakudani Station 1,044 meters high, a difference of 287 meters traveled in about 10 minutes. Enjoy the breathtaking view of Owakudani from a gondola height of 130 meters!



Hakone Sightseeing Cruise

☎0460-83-7722
www.hakone-kankosen.co.jp/foreign/en/

Operates between Hakonemachi, Moto-Hakone and Togendai on Lake Ashi. Enjoy the excellent hakone skyline and a panoramic view of Mt. Fuji.



Enjoy Lake Ashi Cruise



Royal II

Three Fine Ships

Three different sightseeing ships — the red Royal II, the chic Victory, and the Vasa with its elegant sculptures — take you to the fascinating cruise on Lake Ashi.



Victory



Vasa



"KANKO SHISETSU-MEGURI" Bus

(Tourist Attraction Sightseeing Bus/ Hakone Tozan Bus)

This comfy way to go sports a fancy, retro-looking design as it circles tour locations like museums, with skylight windows for breathtaking views of sky and trees.



Hakone Tozan Bus

Many buses operate, offering easy connections as it crisscrosses Hakone's fascinating mountain roads.

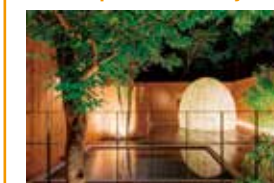


Odakyu Hakone Highway Bus

Offers direct transit from Shinjuku, Tokyo, Haneda Airport and Yokohama to Hakone and Gotemba.

Hakone Lake Hotel

We are proud of "Mayu-no-mori" hot spring



Only 3-minute walk from Togendai Station.

Café & Souvenir HOTORIYA

Visiting old, learn new.



Hakonemachi port

Recommendation See page 11 for Information on great savings with your Hakone Freepass.

Recommendation Unlimited ride on the Hakone Sightseeing Cruise and the Hakone Ropeway with Sightseeing Cruise & Ropeway 1Day Ticket / Hakone Freepass

Recommended Courses to Enjoy Hakone

1 RIDES AND HISTORY COURSE



2 NATURE COURSE



A Convenient, Value-priced Excursion Ticket

HAKONE KAMAKURA PASS



Ride the Odakyu Line and various transportations in Hakone, Enoshima and Kamakura as much as you like!

Hakone

Unlimited use of 8 Hakone-area transportation modes

① Hakone Tozan Line ② Hakone Tozan Bus ③ "KANKO SHISETSU-MEGURI" Bus (Tourist-Attraction Sightseeing Bus/Hakone Tozan Bus) ④ Hakone Tozan Cable Car ⑤ Hakone Ropeway ⑥ Hakone Sightseeing Cruise ⑦ Odakyu Hakone Highway Bus ⑧ Tokai Bus Orange Shuttle

*Unlimited use of ②, ⑦ and ⑧ only within designated zones shown on map. *Cannot be used on transport other than ① to ⑥ or on scheduled sightseeing buses. *For ⑦, passengers with reserved seats have priority. No boarding if all seats are occupied.

Enoshima/
Kamakura

Unlimited
rides of all
Enoden lines

Odakyu
Line

Unlimited
rides of all
Odakyu lines

<Fares>

Adults	Children (6-11)
6,500 yen	2,250 yen

<Period of validity>

3
days

*The period of validity is indicated by the stamp on your ticket. *Regardless of what time you start using the pass, the period of validity will end when transport operating hours end on the third day.

Take the quick, comfortable Romancecar to Hakone and Katase Enoshima! [Reservation required]



Passengers with a HAKONE KAMAKURA PASS can board the Romancecar (reservations required) if they purchase additional express ticket.

*Shinjuku to Hakone-Yumoto: approx. 75min *Normal express train: approx. 115min.

*Shinjuku to Katase-Enoshima: approx. 65min *Normal express train: approx. 70min.

<Romancecar limited Express surcharge>

limited Express Surcharge	Odawara	Hakone Yumoto	Katase Enoshima
From Shinjuku	890 yen	1,090 yen	620 yen

Places where the Freepass is available

• Odakyu Sightseeing Service Center, Shinjuku West [Business hours 8:00-18:00]

Odakyu Sightseeing Service Center is special service counter for foreign tourists. English speaking staff are always available. They offer information about sightseeing along the Odakyu line in places like Hakone and Enoshima, as well as sales of tickets and Freepasses.

TEL:03-5321-7887
FAX:03-5321-7886

E-mail:welcome@odakyu-dentetsu.co.jp
WEB:https://www.odakyu.jp/english/index_after/



1st floor (Ground Floor), Odakyu Line Shinjuku Station West Exit

>>> Hakone Navi

Hakone Travel and Transportation
Information Website

<http://www.hakonenavi.jp/english/>



Sengokuhara Pampas Grass Fields

仙石原スキ草原

Experience the sensual feel of pampas grass fields at the foot of Mt. Daigatake, renowned for showing Hakone autumn at its best. These golden fields, swaying as one in the fall breeze, are wonderful to see and touch.



Owakudani 大涌谷

Created roughly 3 millennia ago by steam explosions, "Great Boiling Valley" is an active volcanic zone sourcing Hakone hot springs and a hot tourist spot for Mt. Fuji views. Feel the volcanic power amid natural beauty.



Moto-Hakone, Hakone-Machi

元箱根・箱根町

Hakone Shrine

箱根神社

Established amid the Nara period, this shrine was dedicated to all the local gods of Kanto and now is known for obtaining fortune, protection against evil, wish fulfillment, and safe road travel.



Hakone Sekisho

(Check-point)

箱根関所

Feel the past come alive at this historic checkpoint for foot and vehicle traffic along the Tokaido Road, linking Edo (now Tokyo) and Kyoto in the Edo period. Inspection and tax collection were held in the Edo-style building.



Sengokuhara

仙石原

Miyanoshita, Gora

宮ノ下・強羅



Hakone Gora Park

箱根強羅公園

Stroll around this French-styled park, opened in 1914, and get a clear sense of the design in bilateral symmetry around a fountain. Delights of the four seasons include a teahouse, ceramics, and flowers.



Chisuji falls

千条の滝

Note how this waterfall, 3 meters high and 25 meters wide, flows quietly and hangs like a reed screen over moss-covered rocks in the upper reaches of Jakotsu River. Enjoy seasonal changes like summer's glowing fireflies and autumn's fiery leaves.

Odawara

小田原



Odawara Castle

小田原城

No trip to Odawara will be complete without visiting this castle built by Omori Yoriharu, regional lord of Nishi-sagami during the Muromachi period (1337-1573). The Hojo Clan, entombed at Soun-ji, succeeded him in ruling from this historic fortress, said to have been the largest in Japan during the Warring States period.



Hotoku Ninomiya Shrine

報徳二宮神社

Established in 1894, next to Odawara Castle, the shrine has since been famous for the divine figure of Ninomiya Sontoku, well-known agriculturalist and philosopher.



Odawara Fishing port

小田原漁港

In addition to offering soothing sounds of harbor waters, this port serves up a rich sea harvest including horse mackerel and sardine. And being seaside, naturally the harbor has plenty of places to dine on the freshest seafood, possibly lunching on a catch hauled from the ocean by fishermen at dawn.

Hakone-Yumoto

箱根湯本

Hakone Old Tokaido Road

箱根旧街道



Amazake Chaya

甘酒茶屋

Historic teahouse open for business early in the Edo period sits perched on the Hakone stretch of the Tokaido Road, a portion legendary for being the most perilous on the old highway. Don't miss the tangy taste of sweet sake, yet another minor legend dating back to the start of the teahouse as well as naming it.



Ishidatami

石畳

This stone-paved road was built at the beginning of the Edo period to make travel smooth and easy for royals as well as commoners. Present-day travelers can sense the passage of time as they look out on scenery as beautiful and captivating as it was for Edo pilgrims, priest, poets and others.

Hakone Stone Buddhas

箱根石仏群



Surrounding Shojin Pond is a stately gathering of Buddha sculptures and stone monuments going back 7 centuries. Among these sacred figures sits the contemplative Rokudo-jizo, carved out of rock and said to be Kanto's largest Buddha figure.

Hakone-Yumoto

箱根湯本

Arguably the most vibrant and lively hot spring district in all Hakone, Yumoto will soon convince you of its superior features, like hot springs for day trips, firmly established inns offering traditional hospitality, and streets around the station chock-a-block with restaurants and souvenirs shops.



Yumoto-Kenban

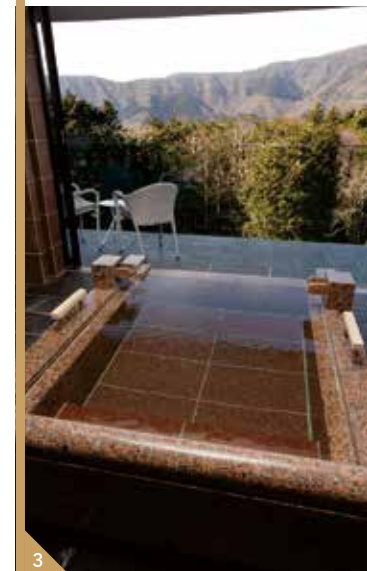
湯本見番

Though it may be hard to believe geisha are not born but made, the daily training here of Yumoto geisha includes dancing, singing, reciting poetry, gracefully pouring drinks without spilling a drop, and more. In addition, seasonal events are held to demonstrate their accomplishments.





THE HIRAMATSU HOTELS & RESORTS SENGOKUHARA



1. Dinner course on a certain day. Ingredients of taste and beautiful presentation are pursued without compromise.
2. Entrance with luxurious ambience. 3. Spacious guestroom baths let you fully stretch out in comfort without concern for weather or outdoor temperature. Terrace-side window can be opened.

In this elegant hotel of famed Hiramatsu, winner of a star in a famous restaurant guide, you'll experience refined hospitality and savor the fusion of Italian and French cuisines in an original menu by Head Chef Kenjiro Yoshikoshi, sure to impress the most demanding epicurean. Utmost care is given to the exciting moment of serving, finishing dishes before your eyes. Dinner is available by reservation to other than hotel guests.

An interior like an art museum displays works by famous painters—

Miro, Picasso, Chagall, and more—make dining a special time as you enjoy fine food and drinks. Eleven guestrooms come in three types, each with breathtaking views and a bath fed continuously by water direct from famed Hakone hot springs.

Sengokuhara itself offers inspired sightseeing from Miyagino cherry blossoms to Mt. Fuji views from Owakudani. Relax and unwind in this highland resort surrounded by the outer rim of a Hakone caldera, all amid the heart of nature.

DATA

The Hiramatsu
Hotels & Resorts
Sengokuhara

1245-337 Sengokuhara,
Hakone-machi,
Ashigarashimo-gun, Kanagawa

- Per person rate: one night with two meals, from ¥53,070
- Dinner : 16:00-20:00 (last order)
- Reservation required (possible on the day of dining)
- Open daily

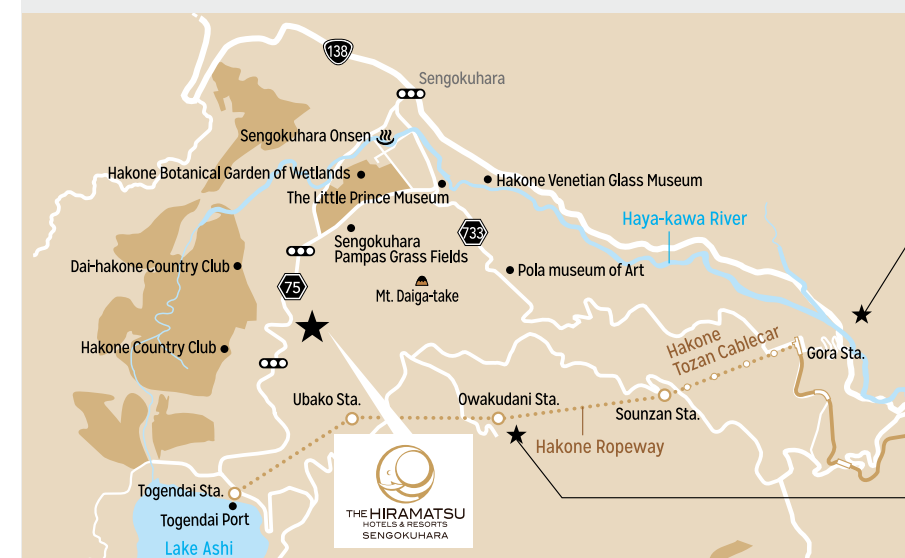
Tel : 0460-83-8981

Savory Journey to Refined Hospitality



4. Stylish guestroom gives you highest-quality sleep in a most elegant bed. 5. Head Chef Kenjiro Yoshikoshi has served with renown in many of Hiramatsu's Italian restaurants.

map of surrounding areas



Cherry blossoms in Miyagino peak from early to mid-April.



Majestic view of Mt. Fuji from Owakudani is a must-see.

<http://www.hiramatsuhotels.com/sengokuhara/>



1 A thrilling adventure in the treetops, more than 10 meters high.
2 Admission (including insurance): adults (18 or over) ¥3,600; children (ages 6-17) ¥2,600. Family discounts available.

Thrilling Adventure in the Forest

An outdoor park filled with trees whose origin is in France. Zip among the treetops in our special safety harness and enjoy 40 different activities. Our two-hour course can be challenged by first-grade elementary school students and above. Even adults will appreciate the sense of accomplishment.

★ Forest Adventure Odawara フォレストアドベンチャー・小田原

☎ 080-4330-4030

MAP P 31

- 4391-1, Kamenokouyama, Kuno, Odawara, Kanagawa
- 9:00-17:00 ■ No fixed holidays
- 15-minute bus ride from Odawara Station (JR/Odakyu Line)
- <http://www.forest-adventure.jp>

Original Japanese Cuisine in Historic Setting

Dine on original washoku (Japanese cuisine) in a leading restaurant of Odawara going back more than 120 years, located in a 90-year-old building declared a nationally designated tangible cultural property. In this historic setting, you'll sit down to a delectable meal of ingredients bought fresh every morning at a local market. Enjoy sushi, tempura, and sashimi prepared by our own itamae (master chef). Every dish is made for taste and appearance as well as requests for vegetarian, muslim, kosher, or other religious servings (reservation required; enquire if for that very day).

Daruma Ryoriten

国指定登録有形文化財 のれんと味
だるま料理店

☎ 0465-22-4128

MAP P 16

- 2-1-30 Honcho, Odawara-shi, Kanagawa
- 11:00-20:00 (last order)
- Open daily
- 8-minute walk from Odawara Station (JR, Odakyu)
- URL: <http://www.darumanet.com/>



1 Set meals from ¥6,000. Savor authentic Japanese cuisine to your heart's content.
2 Chinese-style gabled eaves and hipped roof feature in this building declared a nationally designated tangible cultural property.
3 Beautiful Kiri-no-Ma has classic Japanese-style furnishings as well as chairs.



1 Enjoy at leisure the flavor of tradition in our historic *kamaboko* shop, est. in 1868.
2 Tantalizing rounds of *tamaboko*, ¥250 each (excluding tax).

Savor the Inviting Taste of Tradition

Our long-established shop specializes in *kamaboko* (boiled fish paste)—Odawara soul food—made with a traditional method maintained for over 150 years. Enjoy our popular deep-fried balls of boiled fish paste, called *tamaboko*, perfect as a strolling snack. Good taste is also on hand in our shop museum, also located in the space and atmosphere of a historic house.

Maruu Tashiro 丸う田代總本店

☎ 0120-22-9221

MAP P 16

- 3-6-13 Hamacho, Odawara-shi, Kanagawa
- 9:00-19:00 ■ Open daily ■ Parking available
- 20-minute walk from Odawara Station (JR, Odakyu)
- URL: <http://www.maruu.com>



1 **2** Rice Bowl with Three Local Fish of the Day is a popular dish with ingredients changed daily, for ¥1,480 (excluding tax). Not to be missed is the Tempura and Local Fish Sashimi Set for ¥1,980 (excluding tax).

Delectable Seafood Rice Bowl Dishes

Kaisendonya, as its name indicates, specializes in rice bowls topped with seafood (*kaisen-don*) from Odawara and Sagami Bay that deliver satisfying taste and volume. Managed by a fishmonger, the restaurant offers matchless ingredients and freshness. Regulars come from near and far not only for about 40 kinds of *kaisen-don* but also for its sashimi and tempura.

Kaisendonya Odawara Kaishu 海鮮丼屋 小田原 海舟

☎ 0465-24-2237

MAP P 16

- 1-14-55 Sakaecho, Odawara, Kanagawa
- 11:00-16:30 (till 19:30 on Sat./Sun./holidays)
- Open daily
- 3-minute walk from Odawara Station (JR/Odakyu line)

Point 3

Japanese Customs for Rooms and Meals

Please take particular care for characteristic Japanese culture and customs when eating meals or staying at *ryokan* (Japanese-style inns) which have a traditional Japanese atmosphere.



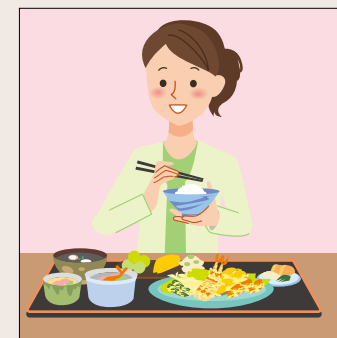
1 It is standard to remove your shoes in the entry hall before entering a room.

In the front entryway take off your shoes while facing forwards and then enter the room. You should then bend down and turn your shoes to face the other way, aligning them neatly.



3 Try wearing your *yukata* around the *ryokan*.

A *yukata* is a traditional type of Japanese clothing, often worn after bathing or while sleeping. Be sure to cover your body first with the right-hand side, then left-hand side. When staying at a *ryokan*, you're welcome to wander around in *yukata*.



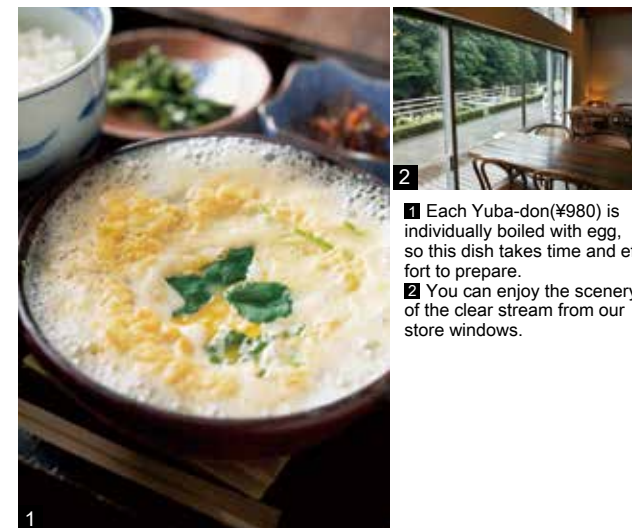
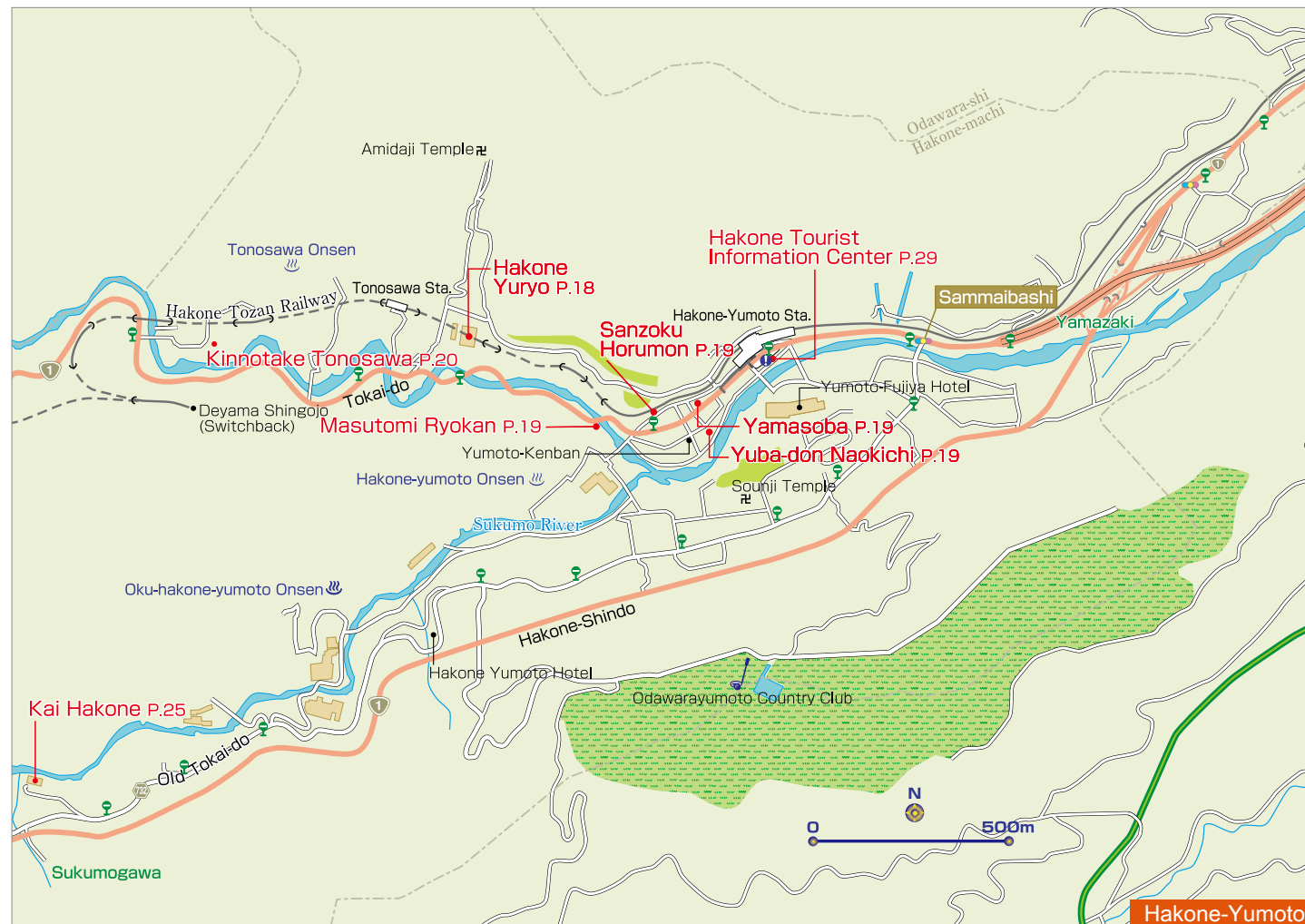
2 Bowls should be held in your hand when eating.

The bowl containing your rice as well as your soup bowl and other bowls should all be held in your hand while eating from them. Don't squeeze the chopsticks too strongly, hold them vertically, cross them over, or stab your food with them.

Simple Facts about Japanese-Style Rooms and Tatami Mats

■ A Japanese-style room is one laid with tatami mats. One appealing feature is the rooms may be used for many purposes, such as a living room, bedroom, or guest room. A single tatami mat is roughly 180 cm x 90 cm, and is counted as 1 'jo' (a specific Japanese counter for tatami mats).

■ Tatami mats provide Japan-style flooring. The face of tatami mats is woven grass, meaning they are highly absorbent, warm in winter, and cool in summer. Their fragrance also has a relaxing effect.



Experience, delicious local dish called Yuba-don

Fresh Japanese yuba (tofu skin) is made by lifting the heated skin from soy milk with skewers. Our yuba, made from the finest quality soy beans, is boiled together with bonito broth, and layered with beaten eggs over rice. Our soft, delicious Yuba-don is a masterpiece of which everyone should taste at least once in life. We also have a free footbath at the front.

Yuba-don Naokichi 湯葉井 直吉

☎ 0460-85-5148

MAP P.18

- 696 Yumoto, Hakone-machi, Ashigarashimo-gun, Kanagawa
- 11:00-18:00, last order
- Closed on Tuesdays(Open on Tuesday holidays)
- 3-minute walk from Hakone-Yumoto Station(Hakone Tozan Railway)



Fun and Popular Yakiniku Until Late

For succulent *yakiniku* (grilled meat), this is the place to go: rich varieties of meat served with care for handmade sauce, dressing, and even *kimchi*. Among many conveniences, like nearby Hakone-Yumoto Station, is our uniquely late closing time of 1:00 AM. Also savory are our reasonable lunch sets from ¥1,150 (excluding tax).

Sanzoku Horumon 山賊ホルモン

☎ 0460-85-5337

MAP P.18

- 724-5 Yumoto, Hakone-machi, Ashigarashimo-gun, Kanagawa
- 12:00-25:00 (last order 24:30)
- Closed on Thursdays
- 3-minute walk from Hakone-Yumoto Station (Hakone Tozan Railway)

森の温泉。森のめし。

箱根湯本

HOT SPRINGS

Large communal baths: “Honden Yurakuan Oyu”

Indoor baths, open-air baths, pottery baths, and sauna facilities

Adults (Including Age 13 and over): 1,400 yen
Children (Age 6-12): 700 yen
Children aged 5yrs. and under are not admitted.

Opening Hours: Open 365 days a year (the resort may occasionally be closed for maintenance work)

Weekdays: 10:00-21:00 (last admission at 20:00)
Saturdays, Sundays and public holidays: 10:00-22:00 (last admission at 21:00)

Private open-air baths: “Hanare Yuya Kaden”

19 private rooms available

Reservations can be made by telephone (0460-85-8411) up to one month in advance.

Fee for private room use (per room, per 60-minute period):

Type 1 (7rooms)	Type 2 (8rooms)	Type 3 (4rooms)
4,000 yen	5,000 yen	6,000 yen

Opening Hours: Open 365 days a year (the resort may occasionally be closed for maintenance work)

Weekdays: 10:00-21:00 (last admission at 20:00)
Saturdays, Sundays and public holidays: 10:00-22:00 (last admission at 21:00)

Hakone Yuryo

— A hot spring resort that's easily accessible from Tokyo as a day trip

Hakone Yuryo can be reached easily from both Haneda Airport and Narita Airport, and is situated in one of Japan's most outstanding hot spring resort areas.

Experience a comfortable, enjoyable train journey on the Odakyu Line!

Limited Express “Romancecar”
Odakyu Line+Hakone Tozan Line Approx 115 minutes

Tonosawa Sta. → Hakone-Yumoto Sta. → Odawara Sta. → Shinjuku Sta. → Haneda Airport

Approx 45 minutes

Yokohama Sta. → Hakone-Yumoto Airiner (Highway express bus) Approx 130 minutes

Approx 90 minutes

Narita Airport



Hot-Spring Inn Focused on Washoku

Relax in comfort and style at this Japanese inn, a five-minute walk from Hakone-Yumoto Station, where you can immerse yourself in a rooftop open-air bath (¥2,000/45 min., total fee for two) boasting the best hot-spring water quality in Hakone. As you bathe, enjoy a magnificent view of Hakone's beautiful sunrise or sunset beyond the mountains.

Mamane-yu Masutomi Ryokan ままね湯 ますとも旅館

☎ 0460-85-5775

MAP P.18

- 656 Yumoto, Hakone-machi, Ashigarashimo-gun, Kanagawa
- 5-minute walk from Hakone-Yumoto Station (Hakone Tozan Railway)
- <http://www.mamaneyu.jp/>

Yamaimo Soba
¥1,180

Yamatake Soba
¥1,300

Tendon (regular)
¥1,320

Hot soba noodles topped with Japanese yam, wild vegetables, and egg yolk

Healthy soba noodles served cold, heaped with grated daikon and mushrooms

Rice bowl loaded with deep-fried jumbo shrimp, fish, and fresh veggies

Peak Taste You've Known and Loved for Half a Century

山そば

Hakone Jinenjo YAMASOBA

TEL : 0460-85-7889

704 Yumoto, Hakonemachi, Ashigarashimo-gun, Kanagawa

11:00 ~ 19:00 Closed: Thursdays

No Parking Credit Card not accepted

<http://www.yamasoba.com>

Harmony of Sculpture and Nature



The Hakone Open-Air Museum, opened in scenic Hakone in 1969. It was the first museum in Japan devoted to sculpture in the open air. Situated on roughly 70,000 square meters of parkland, the Museum has distant vistas of mountain and sea that change with the changing seasons.



THE HAKONE OPEN-AIR MUSEUM

彫刻の森美術館 0460-82-1161 MAP P21

*1121 Ninotaira, Hakone-machi, Ashigarashimo-gun, Kanagawa *9:00-17:00 (Last admission: 16:30) *365 days/year *Adults: 1,600 yen University and high school students: 1,200 yen Middle and elementary school students: 800 yen *Hakone Tozan Railway to Chokoku-no-Mori Station, from which it is a 2-minute walk to the museum *<http://www.hakone-oam.or.jp>



1 Magnificent mural of Fujin and Raijin (wind and thunder gods, respectively), 12 x 30 meters, entitled Wind/Time, sweeps you into a mythic world from the museum entrance.
2 Dining facility in a renovated Japanese-style house has a garden that lets you bathe in the richness of Hakone nature.

Swept Up by Time and Beauty

The Okada Museum of Art boasts one of the largest indoor exhibition spaces in Hakone. About 450 Japanese and Asian paintings, ceramics, and other works from ancient times to the present are regularly exhibited throughout its five floors. Immerse yourself first in a world of beauty and then in a dining facility and footbath cafe for a relaxing experience complete with aesthetic appreciation.

Okada Museum of Art
岡田美術館

☎ 0460-87-3931

MAP P21

■ 493-1 Kowakudani, Hakone-machi, Ashigarashimo-gun, Kanagawa ■ 9:00-17:00 (no admission after 16:30) ■ Open daily ■ Entry fees: adults/university students, ¥2,800; elementary/junior high/high school students, ¥1,800; garden admission, ¥300.
■ 20-minute bus ride from Hakone-Yumoto Station (Hakone Tozan Railway) and 1-minute walk from Kowakien bus stop. ■ URL: <http://www.okada-museum.com/en>



1 The museum's classic Japanese garden, a Registered Monument of Japan, has one of the country's finest and most diverse moss gardens.
2 Explore priceless objects have art of historical and aesthetic value, including the important cultural asset of Male figure of Haniwa from ancient Japan.

Experience the Beauty of Japan

Aesthetic pleasures await you in oldest art museum of Hakone. Stroll a Japanese garden after viewing classic pottery and tea-ceremony vessels. Or relax from a seated garden view in a tea house serving green tea and a seasonal sweet. Bring this issue and enjoy entry-fee discounts for adults (¥100) and for students (¥50).

Hakone Museum of Art
箱根美術館

☎ 0460-82-2623

MAP P21

■ 1300 Gora, Hakone-machi, Ashigarashimo-gun, Kanagawa ■ Apr.-Nov.: 9:30-16:30 / Dec.-Mar.: 9:30-16:00 (last admission 30 mins. before closing) ■ Closed Thur. (open if a holiday / Nov.: open daily) ■ Entry fees: adults, ¥900; high school and university students, ¥400; junior high school students and younger, free ■ 1-minute walk from Koenkai Station (Hakone Tozan Cable Car) ■ <http://www.moaart.or.jp/hakone/en>

KOBE BEEF TEPPANYAKI

ITOH DINING by NOBU

► Lunch Time
11:30 ~ 15:00 (last order, 14:20)
► Dinner Time
17:00 ~ 21:30 (last order, 20:30)
Open daily

1300-64
Gora, Hakone-machi,
Ashigarashimo-gun, Kanagawa
TEL : 0460-83-8209

CRAFT BEER with NOBU FOOD



GORA BREWERY & GRILL

► Lunch Time
11:30 ~ 15:00 (last order, 14:20)
► Dinner Time
17:00 ~ 21:30 (last order, 20:30)
Open daily

1300-72
Gora, Hakone-machi,
Ashigarashimo-gun, Kanagawa
TEL : 0460-83-8107

Genuine Japanese Inn Since 1883

Enjoy the true spirit of Japanese hospitality as experienced from 1883 at a Registered Cultural Property establishment.



三河屋旅館

MIKAWAYA RYOKAN

TEL. +81(0)460-82-2231

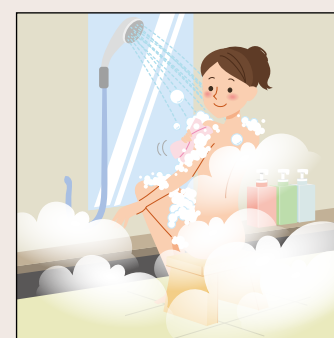
503 Kowakidani, Hakone-Machi, Ashigarashimo-gun, Kanagawa
Access by public transportation is nearby at the Horai-en bus stop from Hakone-Yumoto Station (bound for Moto-Hakone or Hakone-machi), a 20-minute ride.
<http://www.hakone-mikawayama.com/language/09en.htm>



Point 4

Pointers on Bathing Etiquette

These are places to relax and heal your mind and body, so enjoy your time calmly and refrain from any public pool-type antics.



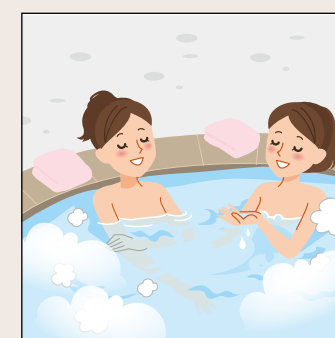
1 Wash before entering the bath!

Wash face and body, then rinse off all soap before entering the tub. Enter naked, without wearing a towel, and enjoy soaking—only soaking.



3 Dry off after bath and before entering dressing room

Dry off with a towel in the bathing area, before entering the dressing room, to prevent the dressing room floor getting wet.



2 No towels in the tub

Enter the bath slowly, to avoid splashing. As a matter of public hygiene, don't put or let your towel into the water and, in general, follow common-sense manners as well as these etiquette pointers.

Onsen FAQs

■ Onsen water can be quite dense and the heat intense, so avoid getting dizzy by limiting your time: don't soak too long (no more than 15 minutes). Immerse yourself up to neck or waist, no deeper, and be sure to hydrate before and after a bath.
■ Bath water may have some "floaties" that are natural mineral components, not trash or filthy bits, so don't worry if something tiny comes your way.

Experience *Hakone*

Yosegi-Zaiku



Hakone's traditional marquetry craft dates back to the Edo period (1603–1867). Experience making a trick box (*karakuri-bako*) using beautiful pieces of wood.



Inside Hakone Gora Park is Hakuundo tearoom, built during the Taisho era (1912–1926), where you can tour the space and enjoy powdered green tea (*matcha*) and Japanese sweets.

Tencha



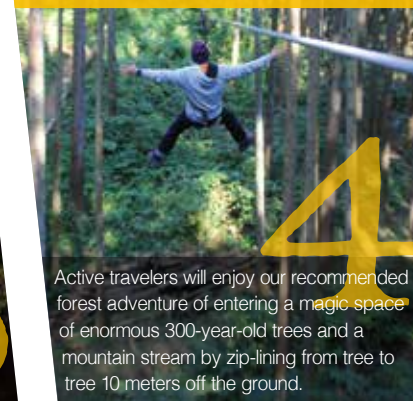
Wishing at Shrine Fountain



In a precinct of Hakone Shrine is the nine-headed dragon shrine of Kuzuryu, with a sacred fountain honoring the dragon god in front. Write your wish and pledge to fulfill it on a slip of paper and release it into the fountain.



Tree Climbing and Zip Line Adventure



Active travelers will enjoy our recommended forest adventure of entering a magic space of enormous 300-year-old trees and a mountain stream by zip-lining from tree to tree 10 meters off the ground.



At Odawara Castle, dress like a samurai in armor and helmet, a kimono-clad princess, or in the costume of Fuma ninja who supported the Hojo Clan.

Armor and Ninja Costumes

1 Hakone Trick Museum ☎0460-83-6604

■ 10:00–17:00 (last admission, 16:00) ■ Daily [MAP P26 ②]
■ Fee: Trick box (small), from ¥1,550 ■ Reservation required

2 Hakuundo, Hakone Gora Park ☎0460-82-2825

■ 10:00–16:00 ■ Daily (with entry fee) [MAP P21]
■ Wintertime remodeling is planned. Please inquire for details.
■ Fee: Inside tour, ¥500 (tea & sweets included)

3 Hakone Shrine ☎0460-83-7123

■ 9:00–16:00 ■ Daily ■ Fee: ¥500 [MAP P26 ②]

4 Forest Adventure Odawara ☎080-4330-4030

■ 9:00–17:00 ■ Closed: No fixed holidays [MAP P31]
■ Fees (accident insurance included): adults (18 and older), ¥3,600; children (1st grade, elementary school, to 17), ¥2,600 ■ Family discount available ■ Reservation required

5 Tokiwagi Gate, Odawara Castle Honmaru Hiroba ☎080-6887-2154

■ 9:30–16:00 (last admission, 15:30) ■ Daily [MAP P16]
■ Fees (costume dress-up): adults (junior high schoolers and older), ¥300; children (elementary schoolers and younger), ¥200



Rooms



Activities



Dining

Japan's hidden luxuries—at your fingertips

KAI is a leading brand of luxury boutique hot spring ryokans.

Every establishment offers a contemporary take on the traditional Japanese inn, providing unique, location-specific experiences—from exclusive activities to specialty suites—designed to immerse guests in the lavish world of Japanese regional craftsmanship.

Free Wi-fi

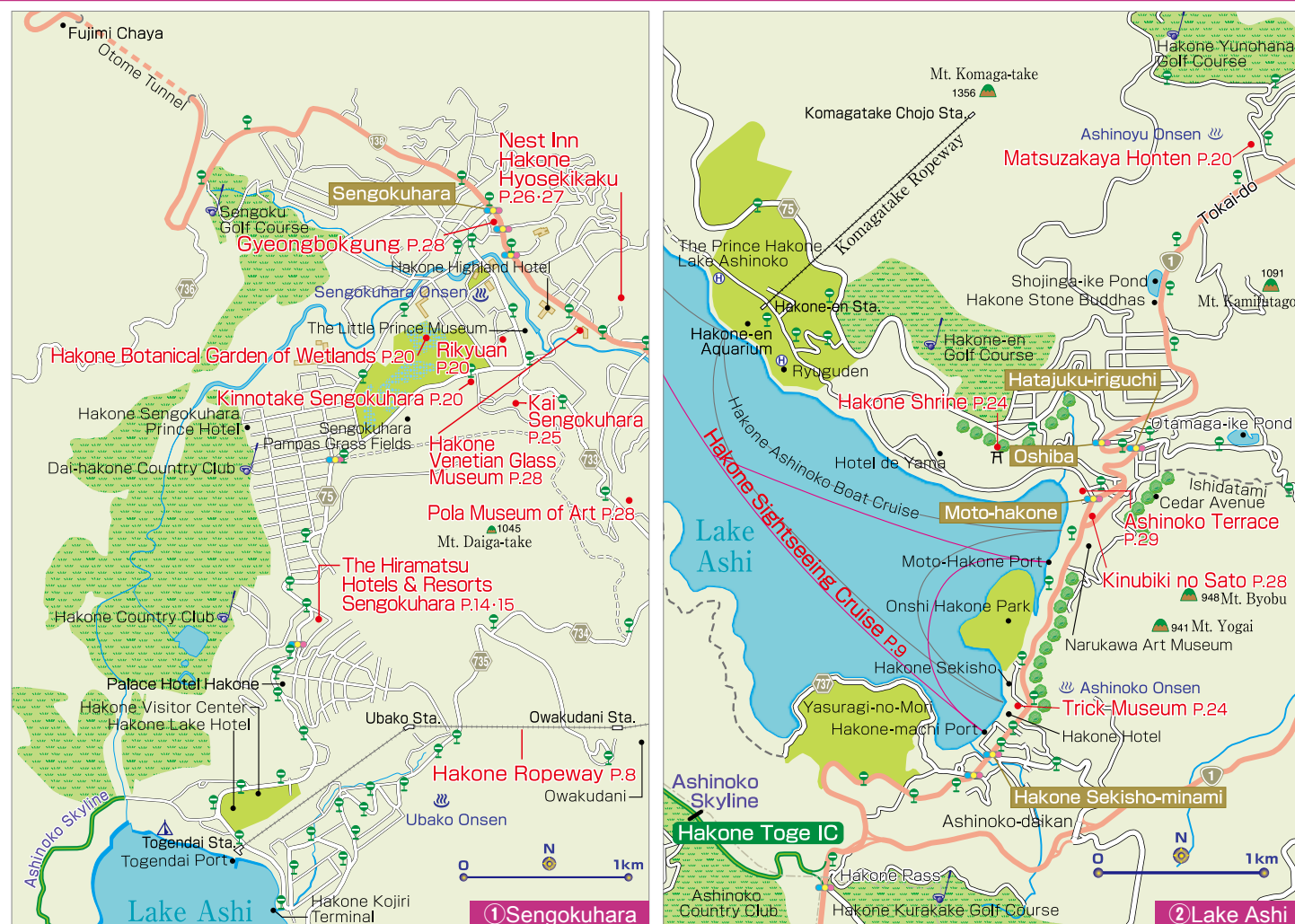
English-speaking staff

Outdoor bath

July.2018 New open
KAI Sengokuhara (HAKONE)



<https://kai-ryokan.jp>



Bathe and Breathe in Forest and Nature

Our hotel of 37 guest rooms, 11 detached villa suites, cafe, common space and more set on a vast site of 55,230 sq.m comprising facilities of ultimate luxury is something rare in Hakone. Special attention is given to your dining pleasure, as seen in food cooked on logwood fire to extract the choicest flavors from ingredients and fresh-baked bread from our restaurant's bakery served for breakfast. Other savory services include kaiseki cuisine served in a Japanese-style room with more than a century's history, Owakudani hot springs, and BMW car-sharing.

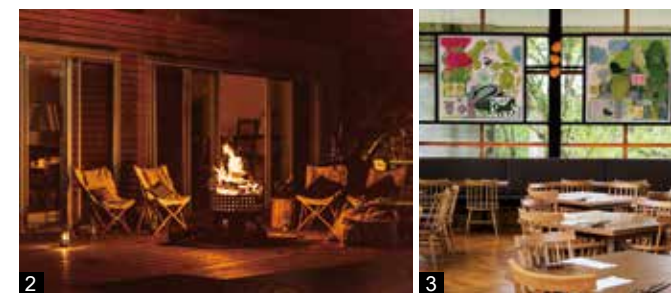
Nest Inn Hakone Hyosekikaku
NEST INN HAKONE 俵石閣

☎ 0460-83-9090

MAP - P.26 ①

■ 1290 Sengokuhara, Hakone-machi, Ashigarashimo-gun, Kanagawa ■ Access: 25-minute bus ride from Hakone-Yumoto Station (Hakone Tozan Railway) ■ URL: <http://www.nestinn-h.co.jp>

- 1 Eleven detached villa suites, surrounded by trees, are in harmony with nature.
- 2 Added pleasure is a fireside chat with other guests.
- 3 Enjoy handmade dishes focused on local ingredients in a restaurant open also to non-hotel guests.



NEST INN HAKONE Villa Suites

nestinn-h.co.jp/stay/villa-suites/

A “NEST” full of riches in HAKONE

11 retreat villas all made of “karamatu” wood surrounded by 55,000 m² Geopark forest with “kaiseki” restaurant in the 100year's sukiya-style private house.

<Room>

<Nature>

<Food>

NEST INN HAKONE Villa Suites
1290 Sengokuhara, Hakone-machi Ashigarashimo-gun, Kanagawa
T,0460-83-9090 info@nestinn-h.co.jp

NEST INN HAKONE
1290, Sengokuhara Hakone-machi Ashigarashimo-gun Kanagawa
T,0460-83-9090 info@nestinn-h.co.jp

NEST INN HAKONE

<https://nestinn-h.co.jp/>

Please come and experience “NEST”
Where you can be cozy and comfortable in the 55,000 m² rich forest ecosystem
HAKONE Geopark and casual French restaurant serving regional authentic food.



- 1 Enjoy a panoramic view of Owakudani from the garden.
2 Also attractive is our cafe-restaurant, with professional Italian singers performing *canzone*.

Enter a Magical World of Glass

Our extensive museum collection showcases not only Venetian glass that aroused the interest of European royals and nobles for 300 years, from the 16th to the 19th century, but also innovative creations by contemporary artists active in the 20th and 21st century. This is the only art museum in Japan where you can see an entire work of Venetian glass.

Hakone Venetian Glass Museum 箱根ガラスの森美術館

☎ 0460-86-3111  MAP  P26 ①

■ 940-48 Sengokuhara, Hakone-machi, Ashigarashimo-gun, Kanagawa ■ 10:00-17:30 (last admission: 17:00) ■ Open daily (excluding 11 days after the second Monday of January) ■ Admission fees: adults, ¥1,500; high school and university students, ¥1,100; primary and junior high students, ¥600. ■ 25-minute bus ride from Hakone-Yumoto Station (Hakone Tozan Railway) ■ <http://www.hakone-garasunomori.jp>



- 1 *La Coiffure*, Pierre-Auguste Renoir, 1888. Pola Museum of Art Collection
2 Museum entrance. Nature trail offers a pleasant walk of about 20 minutes.

Appealing Art in Hakone's Natural Setting

The unique setting of Pola Museum enhances appreciation of its vast and compelling collection. Themed exhibitions, events, and more showcase over 10,000 works of Western paintings by acclaimed masters like Monet, Renoir, and Picasso as well as stellar Japanese paintings, prints, and sculpture plus Asian ceramics. As you enjoy walking the surrounding nature trails, be sure to note the harmonious integration of nature and architecture in the museum's highly acclaimed design, which won several awards, including the Architectural Institute of Japan Award.

Pola Museum of Art ポーラ美術館

☎ 0460-84-2111  MAP  P26 ①

■ 1285 Kozukayama, Sengokuhara, Hakone-machi, Ashigarashimo-gun, Kanagawa ■ 9:00-17:00 (no admission after 16:30) ■ Open daily ■ Entry fees: adults, ¥1,800; senior discount (over 65), ¥1,600; university/high school students, ¥1,300; junior high/elementary school students, ¥700 (free on Sat.) ■ 13-minute bus ride from Gora Station (Hakone Tozan Railway) ■ URL: <http://www.polamuseum.or.jp/english/>




- 1 Assortment of five appetizers, ¥950; tomato sauce pasta with Mochi pork, ¥1,300; margherita pizza, ¥1,800.
2 The open atrium gives you a feeling of abundant spaciousness, complemented superbly by beautiful views of Lake Ashi stretching out before your eyes.

Italian Cuisine on the Lakeside

With 30 varieties of pizza baked in a large Italian pizza oven, we offer you a genuine taste of Italy! You can enjoy delicious Italian cuisine with cheeses and wines crafted in Italy. Next door you'll find a museum, a specialty shop, and a bookstore selling watercolors by Toyoo Tamamura.

Ashinoko Terrace Italian Restaurant La Terraza 芦ノ湖テラス イタリアンレストラン ラ・テラッツァ

☎ 0460-83-1074  MAP  P26 ②

■ 61 Moto-Hakone, Hakone-machi, Ashigarashimo-gun, Kanagawa
■ Weekdays: 10:30-20:00; Sat./Sun./holidays: 9:00-20:00 (last order, 19:30)
■ Open daily (except February) ■ 40-minute bus ride from Hakone-Yumoto Station (Hakone Tozan Railway) ■ <http://www.la-terrazza-ashinoko.co.jp>



Hakone Tourist Information Center

Obtain the latest information of the whole Hakone area, such as sample trip plans and the best spots of the season here. English-speaking staff is always waiting to help plan your trip around Hakone.

Hakone Tourist Information Center

Open hours 9:00~17:45 (open every day)

TEL 0460-85-5700



- 1 Kinubiki Tempura Shoga Udon, ¥1,404.
2 Kinubiki Tenseiro, ¥1,944.
Washoku artisanal cooks create dishes with such appeal that Japanese as well as Hollywood stars travel far and wide to be here.

Renowned and Novel Noodles

Kinubiki Udon offers finely rendered *udon* noodles of the highest-grade Japanese wheat and well-known Hakone water, kneaded together with grated Japanese burdock and sesame. This trademark udon is registered and enjoyed only in this restaurant.

Kinubiki no Sato 絹引の里

☎ 0460-83-5151  MAP  P26 ②

■ 6-10 Moto Hakone, Hakone-machi, Ashigarashimo-gun, Kanagawa
■ Daily Hours (with seasonal variation): 11:00-18:00, last order ■ Open daily
■ 40-minute bus ride from Hakone-Yumoto Station (Hakone Tozan Railway)
■ <http://www.kinubikinosato.jp> (in Japanese)



- 1 Beautiful marbling in select *kuroge* wagyu is a proof of great taste.
2 Dine leisurely at your table, complete with modern foot well. Station pick-up and drop-off are available.

Yakiniku Restaurant for Fine Kuroge Wagyu

Come to this popular *yakiniku* ("grilled meat") restaurant and savor the rich taste of quality *kuroge* wagyu (Japanese black beef) at reasonable prices. Cook your selection atop a smokeless grill, dip it in our secret house sauce, and delight in the umami of this fine beef cut. Also enjoy a wide variety of a la carte dishes. With closing hours at 10 PM, you can sit back and dine at leisure with family and friends!

Korean Cuisine Yakiniku Gyeongbokgung 韓国料理・焼肉 景福宮

☎ 0460-84-5529  MAP  P26 ①

■ 74-1 Sengokuhara, Hakone-machi, Ashigarashimo-gun, Kanagawa ■ 11:30-14:00/17:30-22:00 (last order 21:30) ■ No fixed holidays ■ 25-minute bus ride from Hakone-Yumoto Station (Hakone Tozan Railway) ■ URL: <http://www.okada-museum.com/en>



 **JAPAN AIRLINES**

Staff
Publisher
Kazuhiro Nakamura

Editor in Chief
Yoshiko Maki

Deputy Editor in Chief
Koichiro Uramoto

Sales & Promotion Staff
Sonomi Fujisawa

Editor
Kayoko Aihara Hiroko Matsubayashi
Yoshiko Kanai

Designer
Yukako Miyazawa Kana Inaba
NIPPON PRICOM,inc.

Photographer
Junichi Ihara Megumi Sakurai
Junko Nanba

Map Design
Shigeko Kobayashi

DTP Staff
Junna Shirasawa

Special Thanks
McDAVIS ASSOCIATES,INC.
NIPPON PRICOM,inc.

Cooperation 協力
Odakyu Electric Railway Co., Ltd.
小田電鉄株式会社
Odakyu Hakone Group
小田急箱根グループ
HAKONE TOWN
箱根町
HAKONE Convention Bureau
箱根コンベンションビューロー
Hakone Town Tourist Association
一般財団法人箱根町観光協会
Odawara City
小田原市

Issue 発行
INCLUBE Co., Ltd.
株式会社イングループ

http://www.mismonet.com

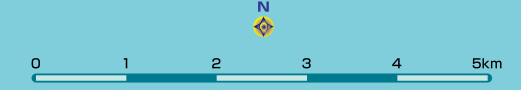
本誌の広告に関するお問い合わせは
株式会社イングループ
〒215-0021
神奈川県川崎市麻生区上麻生1-5-1
りそな新百合ヶ丘ビル5F
営業企画部 ☎044-959-3750

Printing and bookbinding 印刷・製本
SANKI SOGO PRINTING Corporation
サンケイ総合印刷株式会社

次号は2018年11月発行予定です。



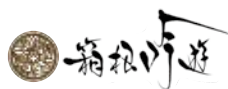
Hakone/Odawara MAP



HAKONE GINYU

連山を見渡し
山紫水明の
境に遊ぶ

*The guest feel 5 senses in scenery and find so many impression,
This is our Ryokan concept.*



TEL. 0460-82-3355