

JAPAN

HAKONE



2019
Summer/
Autumn

vol.10

FREE

English
英語版

HAKONE / ODAWARA / Mt. FUJI VISITOR'S GUIDE

Detailed
MAP
Included

箱根

Mt. Fuji and Lake Ashi



- Breathtaking Views of Mt. Fuji
- Hakone's Various Rides
- Experience Hakone

Japanese Culture and Etiquette

M₃i*s-M₃o
【ミスモ*はこね】



Rooms



Activities



Dining

Japan's hidden luxuries—at your fingertips

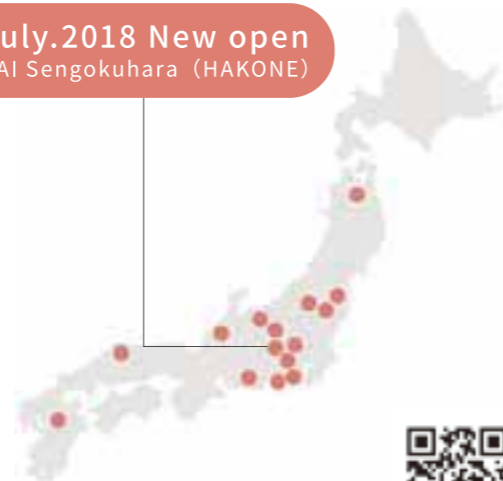
KAI is a leading brand of luxury boutique hot spring ryokans. Every establishment offers a contemporary take on the traditional Japanese inn, providing unique, location-specific experiences—from exclusive activities to specialty suites—designed to immerse guests in the lavish world of Japanese regional craftsmanship.

Free Wi-fi

English-speaking staff

Outdoor bath

July.2018 New open
KAI Sengokuhara (HAKONE)



<https://kai-ryokan.jp/en>



Contents

- 5 Getting to Hakone
- 9 Breathtaking Views of Mt. Fuji
- 10 Let's Enjoy Hakone's Various Rides!
- 12 Recommended Courses to Enjoy Hakone
- 13 HAKONE KAMAKURA PASS,
Tickets information
- 14 Must See in Hakone
- 23 Experience Hakone

Area Attractions

- 16 Odawara
- 20 Hakone-Yumoto
- 24 Miyanoshita, Kowakidani, Gora
- 28 Sengokuhara, Lake Ashi
- 30 Hakone / Odawara Map

Culture and Etiquette

- 4 Simple Japanese
- 19 Shrine and Temple Etiquette
- 22 Japanese Customs for Rooms and Meals
- 26 Pointers on Bathing Etiquette



Hakone, known for its natural beauty that changes expressions with the seasons, is full of charms – hot springs, museums and art galleries, historical buildings, leisure facilities, fantastic food and glorious view of Mt. Fuji, the world's cultural heritage site.

Please visit Hakone that made tourists of the world a captive, and make lots of memories there.

Information published in this magazine is as of April, 2019. There may be cases of prices having been changed since then, due to consumption tax rate revision and other reasons, so please check with the stores before use. And there are instances of consumption tax or bathing tax, other service fees applied separately. The overnight stay prices are a single person charge on weekday (Monday to Thursday and Sunday, excluding the day before a holiday) overnight stay with two meals, for a room by two persons unless otherwise stated. ※ The details of what have been referred in this magazine could be changed or discontinued due to weather or other reasons. Please check with the organizer/facility/store before heading out.

Please note that the opening/business hours, charges, closed days, event opening periods and menu contents of facilities and stores published in this magazine are subject to change without notice.

Unauthorized reproduction/copying of photographs, illustrations, maps or articles in this magazine are strictly forbidden.



ICHINOYU New Hotel will Open
on August 3rd, 2019

Japanese Ryokan style Hotel Group "ICHINOYU"

Please feel free to contact us at any time

TEL. Overseas: +81-460-85-5331
Domestic: 0460-85-5331

FAX. Overseas: +81-460-85-5335
Domestic: 0460-85-5335

E-mail reservation@ichinoyu.co.jp

Website www.ichinoyu.co.jp/eng/

fb.com/english.ichinoyu

ichinoyu_group

@ICHINOYU_HAKONE



Website



The quality & reasonable price for your "Hakone" trip
Enjoy your relaxing time with "good hot spring bath" "good food" "good trip"
in ICHINOYU hotels

Foundation in 1630
7 Ryokan style hotel in Hakone

A feast for all your senses. Make the most of being away.

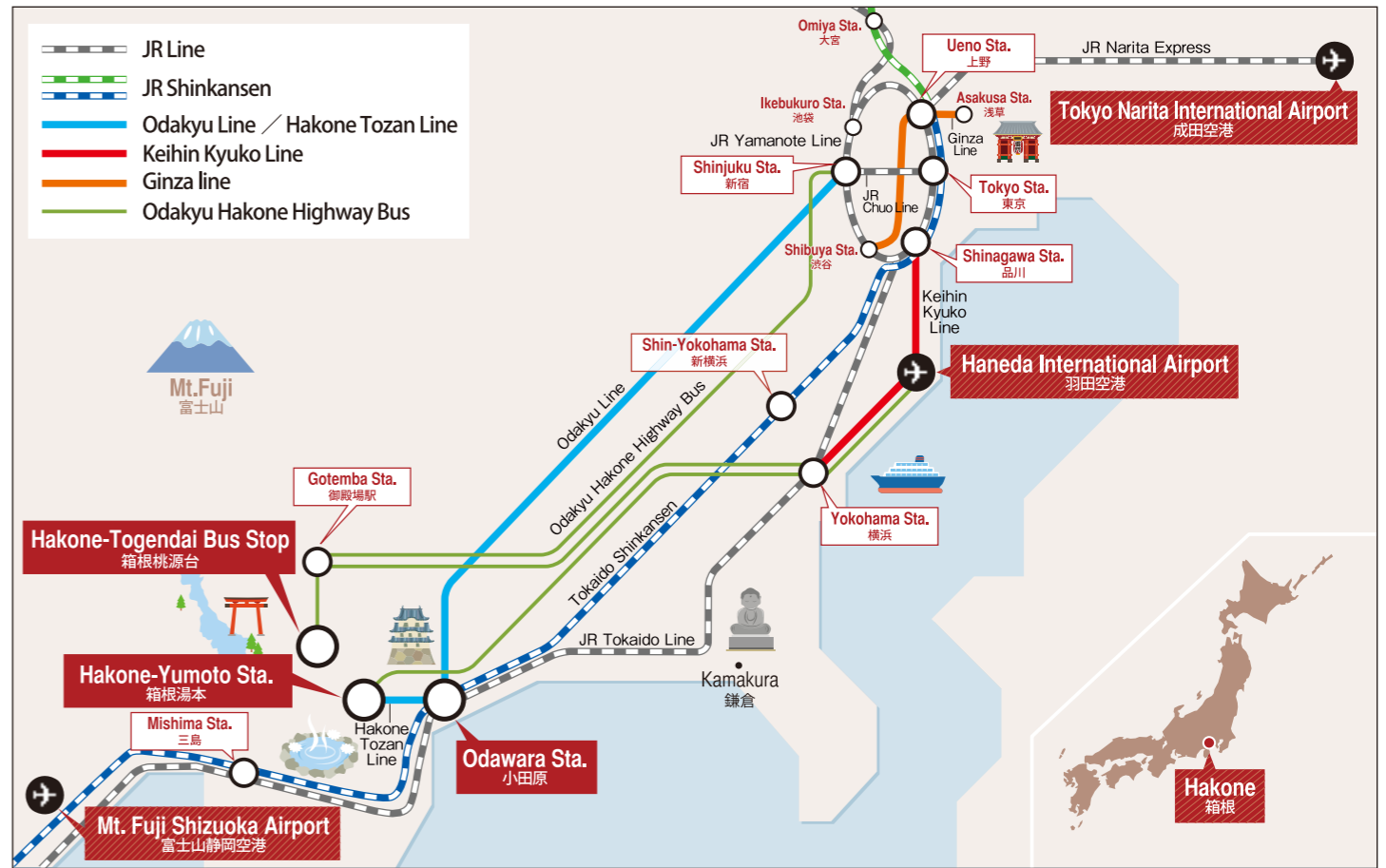
Pristine mountain forests. World-famous hot springs and cuisine. Relax and savor this rare pairing of luxurious comfort with classic Japanese style and hospitality.

Tel. 0460-82-2000
hakone.regency.hyatt.com

HYATT REGENCY HAKONE RESORT AND SPA
1320 Gora, Hakone-Machi
Ashigarashimogun, Kanagawa 250-0408

HYATT name, design and related marks are trademarks of Hyatt Corporation. ©2017 Hyatt Corporation. All rights reserved.

Getting to Hakone



Point 1 Simple Japanese

If you can learn some simple Japanese, it will be useful when trying to communicate.

Greeting and Daily Conversation

Yes / No hai / iie
Good Morning ohayo (gozaimasu)
Hello konnichiwa
Good evening konbanwa
Goodbye sayonara
Thank you arigato (gozaimasu)
Excuse me sumimasen
I'm sorry gomennasai
It's delicious oishi

Shopping and Eating

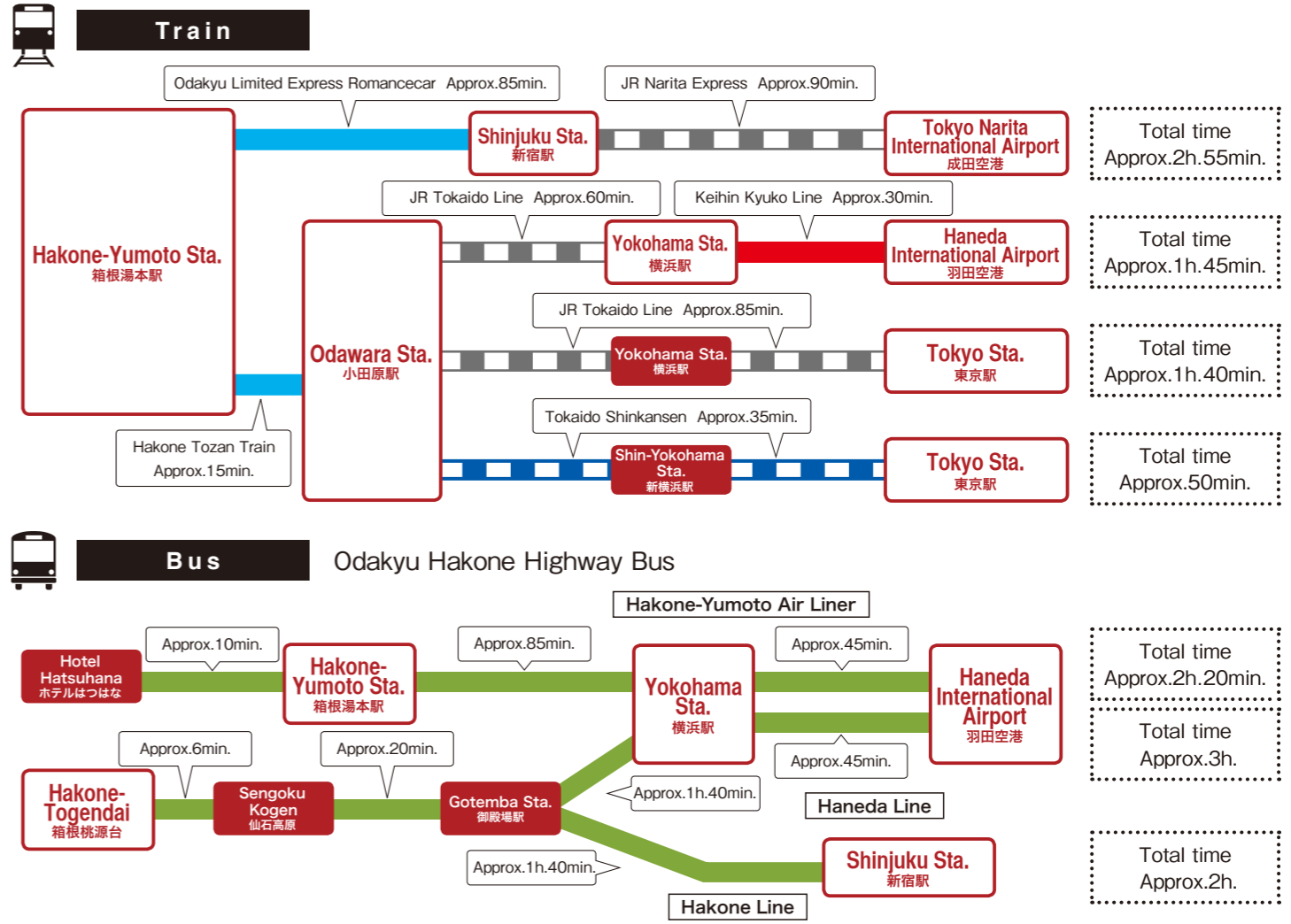
How much is it? Ikura desu ka?
What do you recommend? Osusume wa nani desu ka?
What is this? Kore wa nani desu ka?
Do you have ○○? ○○ wa arimasu ka?
I'll have this, please. Kore o kudasai
Can I pay using my creditcard? Kurejitto Kādo de shiharai dekimasu ka?

Sightseeing

Where is the ○○? wa doko desu ka?
I want to go to ○○. ni ikitai desu

Toilet..... toire	Tourist office kanko annaijo
Station eki	Hospital byouin
Bus Stop basunoriba	

How long will it take? Jikan wa dore gurai kakarimasu ka?
Could you please take my/our picture. Shashin o totte kudasai
Can you speak English? Eigo wa hanasemasu ka?
I lost my ○○. ○○ o nakushimashita





Heavenly Taste of Cream Foam and Hot Spring Ambience

Enjoy Fruits of Hakone Mountains and Sea, and The Premium Malt's Beer

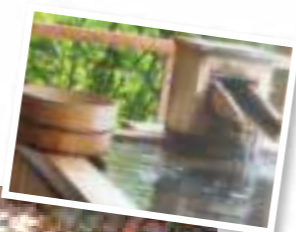
Hakone is Japan's leading hot spring resort, where you can enjoy a hot spring inn, drop-in bath, gourmet dining, and great shopping. 808 Monsmare, adjacent to Hakone-Yumoto Station, Hakone's gateway, is an Italian

restaurant where you can enjoy fruits of Hakone mountains and sea, all grilled to perfection over wood fire for dishes that pair perfectly with The Premium Malt's beer. Its silky smooth and creamy foam is achieved via utter focus on ingredients, creation process, serving vessel, and pouring method.

Thanks to high-quality foam and delicate hops aroma, a premier taste experience is yours. The best balance of beer and foam is a 7:3 ratio, especially when served for optimal taste in special glasses made expressly to retain foam 1.2 times richer than conventional ones. The special shape of the glasses enables beer to slowly flow onto your palette, releasing rich flavor and aromatic nose. Washing by hand and natural drying are *de riguer*, as dishwasher washing may leave oil and wiping them with a cloth may leave small fibers. By all means, savor a glass of beer, the ultimate creation of soul and technology.



Nothing like a bubbling hot spring! ♨️



Hot spring ambience around Hakone-Yumoto Station



808 Monsmare

☎0460-83-9098 MAP - P20
 MIRA HAKONE 1F 698-10
 Yumoto, Hakone-machi,
 Ashigarashimo-gun, Kanagawa
 ■9:00-21:00 ■Open daily
 1-minute walk from Hakone-Yumoto Station (Hakone Tozan Railway)
<https://808monsmare.com/>



1 3 A rich array of oven-grilled pizzas, including Pizza Norma (¥1,580 + tax) 2 Owner and staff 4 Today's wagyu firewood-grilled steak (200 g) (¥4,500 + tax)

神泡。

K A M I A W A

The creamy foam defines the beer.

Only select ingredients brewed with precision. It's the harmony between the process and ingredients that gives birth to an incredibly creamy head, KAMIWA.

Add the proper pour and experience smooth texture in a satisfying foamy head to be enjoyed anytime.



ストップ! 20歳未満飲酒・飲酒運転。妊娠中や授乳期の飲酒はやめましょう。お酒はなによりも適量です。

サントリービール株式会社

水と生きる SUNTORY

The PREMIUM MALT'S





連山を見渡し
山紫水明の
境に遊ぶ

The guest feel 5 senses in scenery
and find so many impression,
This is our Ryokan concept.

Breathtaking Views of Mt. Fuji

Mt. Fuji, symbolic home to Japanese people, became a World Cultural Heritage site by virtue of its beauty and being a source of spiritual as well as artistic inspiration. Experience all the joys of uniquely viewing Japan's sacred peak from Sengokuhara and Moto-Hakone areas.



from Mt. Komagatake



from Owakudani



from Hakone Ashinoko Narukawa Art Museum



from Moto-hakone Port



from Hotel Green Plaza Hakone

Let's Enjoy Hakone's Various Rides!

Whether cruising through the sky, crossing a lake, ascending or descending mountain trails on wheels or ropeway, Hakone boasts exciting ways to go and a chance to experience magnificent nature.



Fully experience nature's finest from the sky

Enjoy Heavenly Views



※ Due to maintenance work, operation is suspended between Sounzan and Owakudani stations from May 10 to 30, and between Owakudani and Togendai stations from May 31 to July 1, 2019. Bus service is available as alternate transportation.

Hakone Ropeway

☎0465-32-2205
www.hakoneropeway.co.jp/foreign/en/

Enjoy the views during a 30-minute ride across 4 kilometers between Sounzan and Togendai stations, including the amazing Owakudani volcanic valley, Lake Ashi, and magnificent Mt. Fuji.

Hakone Tozan Cable Car

Travels at approximately 1.2 kilometers to connect Gora and Sounzan stations in 10 minutes.



Hakone Tozan Railway

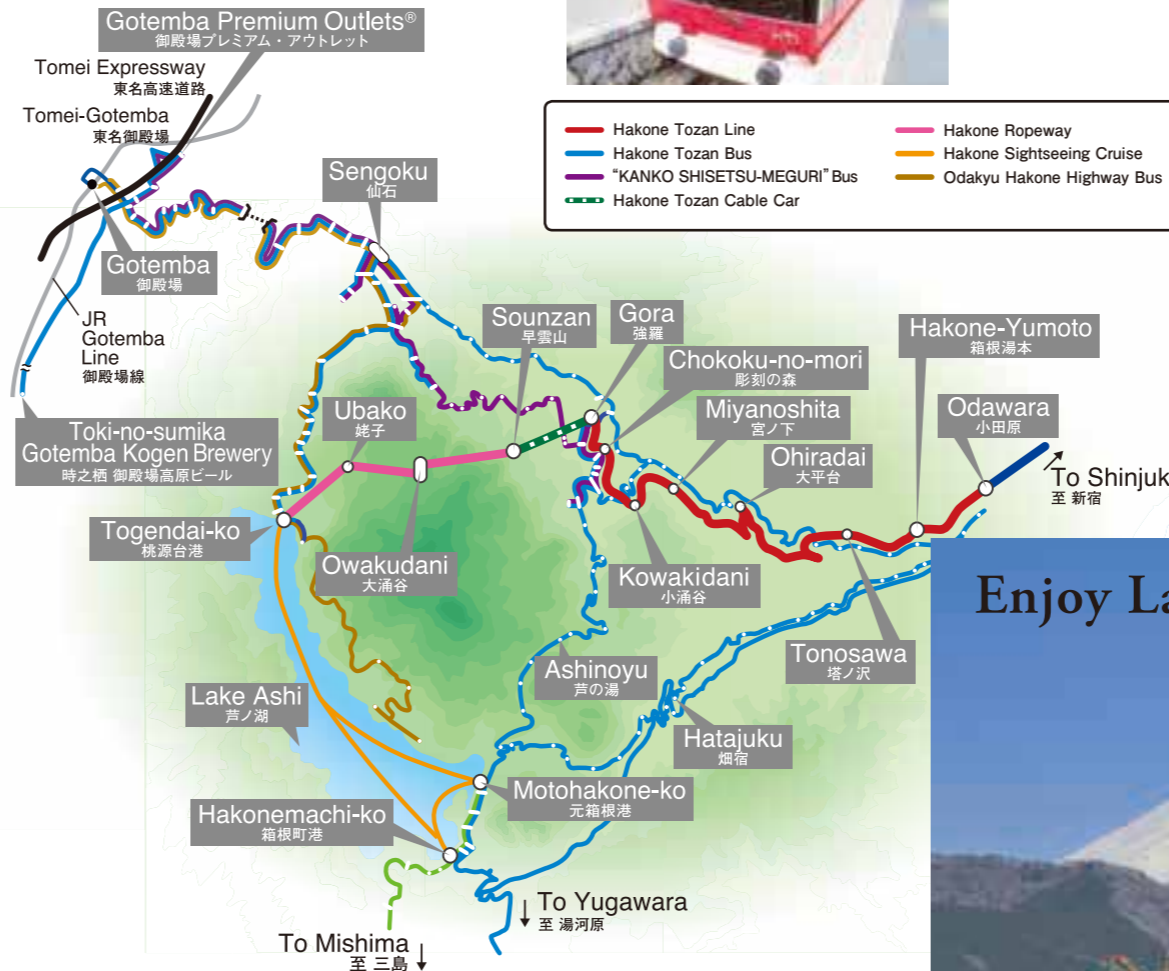
Travel from Odawara to Gora stations while enjoying the surrounding wilderness and breathtaking views from railroad bridges.

Steepest pitch in Japan

Between Hakone-Yumoto and Kowakidani stations is an 80/1000 gradient, the steepest in Japan for an adhesion railway.

Switchback

The railcar climbs the steep incline in a switchback zig-zag, changing directions back and forth.



Hakone Sightseeing Cruise

☎0460-83-7722
www.hakone-kankosen.co.jp/foreign/en/

Operates between Hakonemachi, Moto-Hakone and Togendai on Lake Ashi. Enjoy the excellent hakone skyline and a panoramic view of Mt. Fuji.



Owakudani original curry and rice with soft-boiled egg



Owakudani Ekisyokudo
 (The restaurant in Owakudani Station)

Note: Access to the Owakudani area may be restricted due to volcanic gas emission.

Enjoy 130-meter view!

Sounzan Station is 757 meters high, and Owakudani Station 1,044 meters high, a difference of 287 meters traveled in about 10 minutes. Enjoy the breathtaking view of Owakudani from a gondola height of 130 meters!



Enjoy Lake Ashi Cruise



Queen Ashinoko, a New Ship Debuts in April 2019

A classical feel is created by lavish use of wood from floor to ceiling and detailed attention to furnishings. Enjoy a sense of high-quality resort.



'KANKO SHISETSU-MEGURI' Bus

This comfy way to go sports a fancy, retro-looking design as it circles tour locations like museums, with skylight windows for breathtaking views of sky and trees.



Hakone Tozan Bus

Many buses operate, offering easy connections as it crisscrosses Hakone's fascinating mountain roads.



Odakyu Hakone Highway Bus

Offers direct transit from Shinjuku, Tokyo, Haneda Airport and Yokohama to Hakone and Gotemba.

Recommendation See page 13 for Information on great savings with your Hakone Freepass.

Recommendation Unlimited ride on the Hakone Sightseeing Cruise and the Hakone Ropeway with Sightseeing Cruise & Ropeway 1Day Ticket / Hakone Freepass

Recommended Courses to Enjoy Hakone

1 RIDES AND HISTORY COURSE



2 NATURE COURSE



A Convenient, Value-priced Excursion Ticket

HAKONE KAMAKURA PASS



Ride the Odakyu Line and various transportations in Hakone, Enoshima and Kamakura as much as you like!

Hakone

Unlimited use of 8 Hakone-area transportation modes
 ① Hakone Tozan Line ② Hakone Tozan Bus ③ "KANKO SHISETSU-MEGURI" Bus (Tourist-Attraction Sightseeing Bus/Hakone Tozan Bus) ④ Hakone Tozan Cable Car ⑤ Hakone Ropeway ⑥ Hakone Sightseeing Cruise ⑦ Odakyu Hakone Highway Bus ⑧ Tokai Bus Orange Shuttle

*Unlimited use of ②, ⑦ and ⑧ only within designated zones shown on map. *Cannot be used on transport other than ① to ⑥ or on scheduled sightseeing buses. *For ⑦, passengers with reserved seats have priority. No boarding if all seats are occupied.

Enoshima/ Kamakura

Unlimited rides of all Enoden lines

Odakyu Line

Unlimited rides of all Odakyu lines

<Fares>

Adults	Children (6-11)
7,000 yen	2,250 yen

The prices are subject to charge.

<Period of validity>

3
days

*The period of validity is indicated by the stamp on your ticket. *Regardless of what time you start using the pass, the period of validity will end when transport operating hours end on the third day.

https://www.odakyu.jp/english/passes/hakone_kamakura/



Take the quick, comfortable Romancecar to Hakone and Katase Enoshima! [Reservation required]



Passengers with a HAKONE KAMAKURA PASS can board the Romancecar (reservations required) if they purchase additional express ticket.

*Shinjuku to Hakone-Yumoto: approx. 80min *Normal express train: approx. 115min.
 *Shinjuku to Katase-Enoshima: approx. 65min *Normal express train: approx. 75min.

<Romancecar limited Express surcharge>

limited Express Surcharge	Odawara	Hakone Yumoto	Katase Enoshima
From Shinjuku	890 yen	1,090 yen	620 yen

Places where the Freepass is available

• Odakyu Sightseeing Service Center, Shinjuku West [Business hours 8:00-18:00]

Odakyu Sightseeing Service Center is special service counter for foreign tourists. English speaking staff are always available. They offer information about sightseeing along the Odakyu line in places like Hakone and Enoshima, as well as sales of tickets and Freepasses.

TEL:03-5321-7887

WEB:https://www.odakyu.jp/english/index_after/



1st floor (Ground Floor), Odakyu Line Shinjuku Station West Exit

»»» HAKONE Your Guide to All Things Hakone Website

<https://www.hakonenavi.jp/international/en/>

※ Due to maintenance work, operation is suspended between Sounzan and Owakudani stations from May 10 to 30, and between Owakudani and Togendai stations from May 31 to July 1, 2019. Bus service is available as alternate transportation.

Must See in Hakone



Sengokuhara Pampas Grass Fields
仙石原ススキ草原

Experience the sensual feel of pampas grass fields at the foot of Mt. Daigatake, renowned for showing Hakone autumn at its best. These golden fields, swaying as one in the fall breeze, are wonderful to see and touch.



Owakudani 大涌谷

Created roughly 3 millennia ago by steam explosions, "Great Boiling Valley" is an active volcanic zone sourcing Hakone hot springs and a hot tourist spot for Mt. Fuji views. Feel the volcanic power amid natural beauty.

Moto-Hakone, Hakone-Machi

元箱根・箱根町

Hakone Shrine
箱根神社

Established amid the Nara period, this shrine was dedicated to all the local gods of Kanto and now is known for obtaining fortune, protection against evil, wish fulfillment, and safe road travel.

Hakone Sekisho
(Check-point)
箱根関所

Feel the past come alive at this historic checkpoint for foot and vehicle traffic along the Tokaido Road, linking Edo (now Tokyo) and Kyoto in the Edo period. Inspection and tax collection were held in the Edo-style building.



Miyanoshita, Gora

宮ノ下・強羅



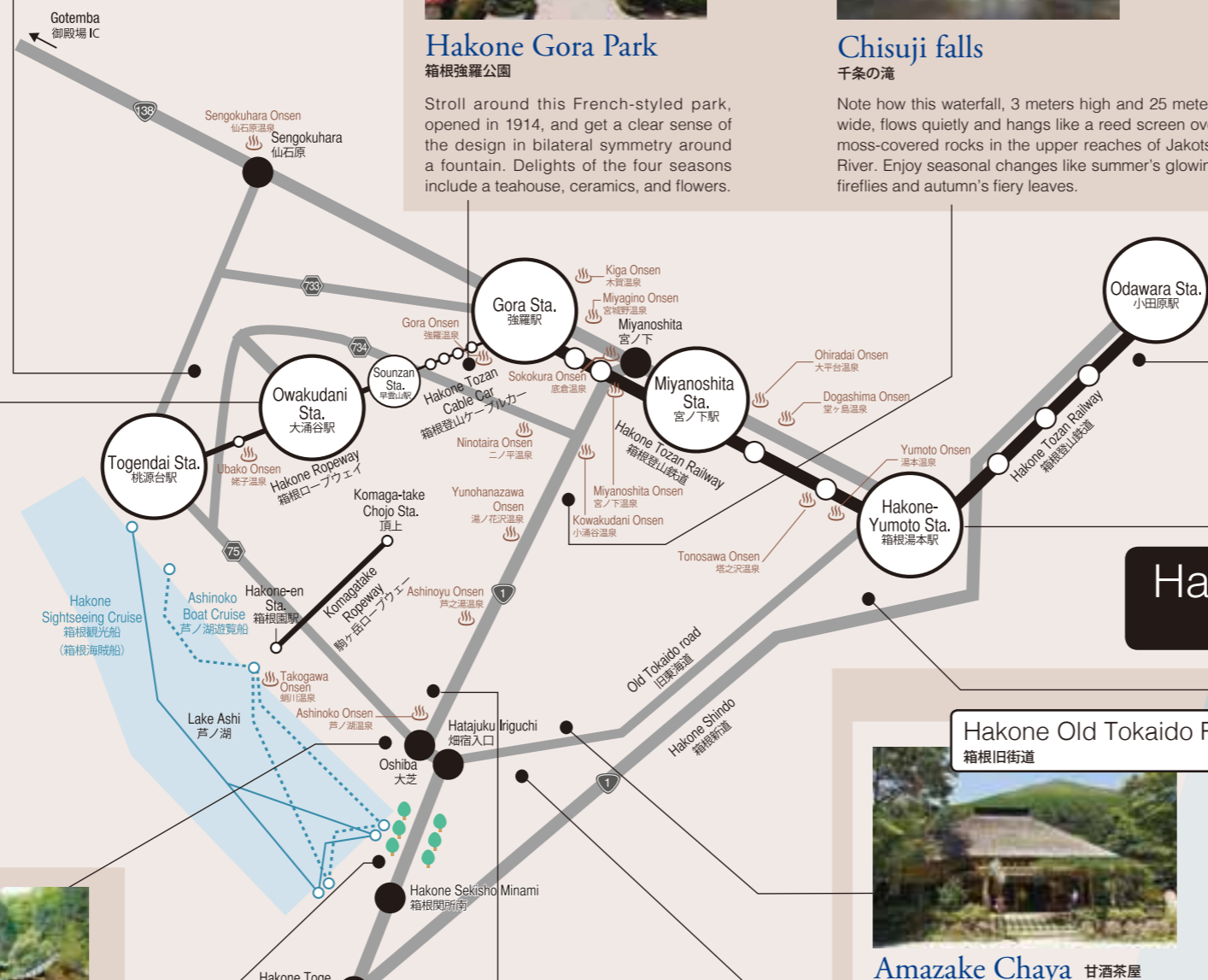
Hakone Gora Park
箱根強羅公園

Stroll around this French-styled park, opened in 1914, and get a clear sense of the design in bilateral symmetry around a fountain. Delights of the four seasons include a teahouse, ceramics, and flowers.



Chisuji falls
千条の滝

Note how this waterfall, 3 meters high and 25 meters wide, flows quietly and hangs like a reed screen over moss-covered rocks in the upper reaches of Jakotsu River. Enjoy seasonal changes like summer's glowing fireflies and autumn's fiery leaves.



Odawara

小田原



Odawara Castle
小田原城

No trip to Odawara will be complete without visiting this castle built by Omori Yoriharu, regional lord of Nishi-sagami during the Muromachi period (1337-1573). The Hojo Clan, entombed at Sounji, succeeded him in ruling from this historic fortress, said to have been the largest in Japan during the Warring States period.



Hotoku Ninomiya Shrine
報徳二宮神社

Established in 1894, next to Odawara Castle, the shrine has since been famous for the divine figure of Ninomiya Sontoku, well-known agriculturalist and philosopher.



Odawara Fishing port
小田原漁港

In addition to offering soothing sounds of harbor waters, this port serves up a rich sea harvest including horse mackerel and sardine. And being seaside, naturally the harbor has plenty of places to dine on the freshest seafood, possibly lunching on a catch hauled from the ocean by fishermen at dawn.

Hakone-Yumoto

箱根湯本

Hakone Old Tokaido Road

箱根旧街道



Amazake Chaya 甘酒茶屋

Historic teahouse open for business early in the Edo period sits perched on the Hakone stretch of the Tokaido Road, a portion legendary for being the most perilous on the old highway. Don't miss the tangy taste of sweet sake, yet another minor legend dating back to the start of the teahouse as well as naming it.



Hakone-Yumoto
箱根湯本

Arguably the most vibrant and lively hot spring district in all Hakone, Yumoto will soon convince you of its superior features, like hot springs for day trips, firmly established inns offering traditional hospitality, and streets around the station chock-a-block with restaurants and souvenirs shops.



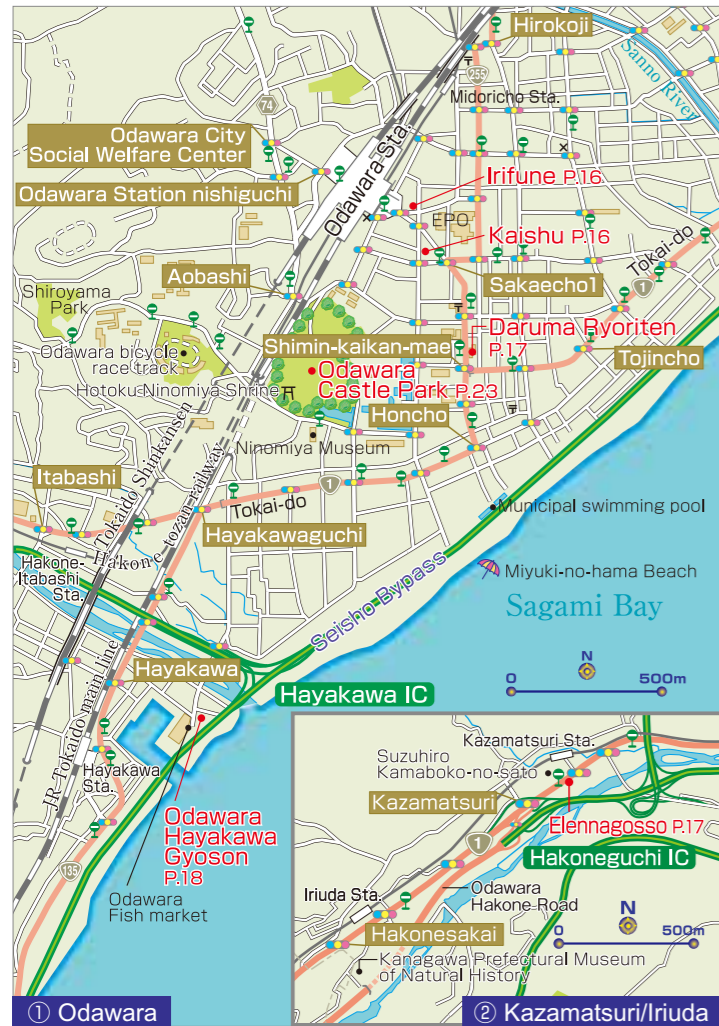
Ishidatami
石畳

This stone-paved road was built at the beginning of the Edo period to make travel smooth and easy for royals as well as commoners. Present-day travelers can sense the passage of time as they look out on scenery as beautiful and captivating as it was for Edo pilgrims, priest, poets and others.



Yumoto-Kenban 湯本見番

Though it may be hard to believe geisha are not born but made, the daily training here of Yumoto geisha includes dancing, singing, reciting poetry, gracefully pouring drinks without spilling a drop, and more. In addition, seasonal events are held to demonstrate their accomplishments.



1 Dynamic dishes include Rice Bowl with Three Local Fish of the Day, ¥1,580 (excluding tax), kaisen-don, (rice bowl topped with fresh seafood), and ten-don (rice bowl topped with fried seafood and vegetables). 2 Enjoy a port-town vitality inside the restaurant.

Delectable Seafood Rice Bowl Dishes

Kaisendonya, as its name indicates, specializes in rice bowls topped with seafood (kaisen-don) from Odawara and Sagami Bay that deliver satisfying taste and volume. Managed by a fishmonger, the restaurant offers matchless ingredients and freshness. Regulars come from near and far not only for about 40 kinds of kaisen-don but also for its sashimi and tempura.

Kaisen-Donya Odawara Kaishu

海鮮丼屋 小田原 海舟
 ☎ 0465-24-2237 MAP P.16 ①
 ■ 1-14-55 Sakaecho, Odawara-shi, Kanagawa
 ■ 11:00-16:30 (till 19:30 on Sat./Sun./holidays)
 ■ Open daily
 ■ 3-minute walk from Odawara Station (JR/Odakyu line)

Original Japanese Cuisine in Historic Setting

Dine on original washoku (Japanese cuisine) in a leading restaurant of Odawara going back more than 120 years, located in a 90-year-old building declared a nationally designated tangible cultural property. In this historic setting, you'll sit down to a delectable meal of ingredients bought fresh every morning at a local market. Enjoy sushi, tempura, and sashimi prepared by our own itamae (master chef). Every dish is made for taste and appearance as well as requests for vegetarian, muslim, kosher, or other religious servings (reservation required; enquire if for that very day).

Daruma Ryoriten

国指定登録有形文化財 のれんと味 だるま料理店
 ☎ 0465-22-4128 MAP P.16 ①
 ■ 2-1-30 Honcho, Odawara-shi, Kanagawa
 ■ 11:00-20:00 (last order)
 ■ Open daily
 ■ 8-minute walk from Odawara Station (JR, Odakyu)
 ■ URL: <http://www.darumanet.com/>



1 Set meals from ¥6,000. Savor authentic Japanese cuisine to your heart's content. 2 Chinese-style gabled eaves and hipped roof feature in this building declared a nationally designated tangible cultural property. 3 Beautiful Kiri-no-Ma has classic Japanese-style furnishings as well as chairs.



Serving Fresh Treasures from the Sea for 21 Years

This is the place to enjoy varied dishes using seafood, sushi, tempura, BBQ or steak. *Irifunedon* is a dynamic rice bowl piled high with fresh ingredients, and a popular choice is Japanese-brand beef, juicy when grilled on a hot stone plate. Courses begin at ¥3,000, with coffee or dessert free for diners with a clipping of this magazine ad until Nov. 30, 2019. (Other discounts may not be used in combination with this offer.)

- 1 *Irifunedon* is a special dish and utterly gorgeous (in front). At center is simmered splendid alfoncino.
- 2 Rare Japanese-brand beef can be savored in a variety of cooking styles—steak, BBQ, and more.
- 3 Our spacious restaurant welcomes any size group of diners, from solo to duets, trios, quartets, and more.



Sushi & Kaisen Izakaya Irifune, Odawara Eki-mae Shop
 寿司・海鮮居酒屋 入船 小田原駅前店

☎ 0465-24-3400 MAP P.16 ①
 ■ 2-1-29 Sakaecho, Odawara-shi, Kanagawa
 ■ 11:00-23:00 (L.O.22:30)
 ■ Closed Mondays (open if holiday)
 ■ 1-minute walk from Odawara Station (JR & Odakyu lines)
 ■ <http://irifuneinc.com/>



1 A thrilling adventure in the treetops, more than 10 meters high. 2 Admission (including insurance): adults (18 or over) ¥3,600; children (ages 6-17) ¥2,600. Family discounts available.

Thrilling Adventure in the Forest

An outdoor park filled with trees whose origin is in France. Zip among the treetops in our special safety harness and enjoy 40 different activities. Our two-hour course can be challenged by first-grade elementary school students and above. Even adults will appreciate the sense of accomplishment.

Forest Adventure Odawara

フォレストアドベンチャー・小田原
 ☎ 080-4330-4030 MAP P.31
 ■ 4391-1, Kamenokouyama, Kuno, Odawara-shi, Kanagawa
 ■ 9:00-17:00 ■ No fixed holidays
 ■ 15-minute bus ride from Odawara Station (JR/Odakyu Line)
 ■ <http://www.forest-aventure.jp>

Restaurant えれなごそ

Buffet : Elennagosso

In the morning, Elennagosso's chefs go to the local fish market and select the freshest seafood available. They also mainly use vegetables from local farmers grown using fertilizer made from leftover fish. Enjoy as much of our local delicacies as you like at this sustainable restaurant's all-you-can-eat buffet.



Buffet : Weekdays

- Lunch / 11:00~14:45 ¥1,900
- Tea Time / 15:00~17:00 (snacks&sweets) ¥1,300

Weekends and holidays

- Brunch / 9:30~11:00 ¥1,500
- Lunch / 11:00~17:00 ¥2,200

● Child / age4~12 Half price. 3 and under free.
 *Our all-you-can-eat buffet is available for 80 minutes.



245 Kazamatsuri, Odawara city, Kanagawa, Japan
 ■ Short walk from Kazamatsuri Sta., 10-min drive from Odawara Sta. ■ 7 days a week. Open daily (closed Jan. 1 and other days)
 ■ Payment by credit cards accepted. <http://www.kamaboko.com/en/>

Seafood Gourmet Theme Park Odawara Hayakawa Gyoson

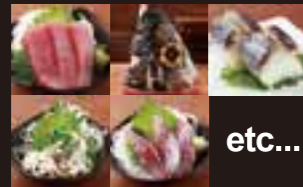
小田原早川漁村

Go Portside
for Good Food
and Fun!

80min.
All you can eat and drink



Experience *otokogi* service
—done with great spirit—
every 30 minutes!



etc...

Be ready for whatever comes to delight your palate!

Feast on fresh seafood BBQ to your heart's content!

1F Aburiya
fishermen's hamayaki

☎ 0465-24-7804 ■ Hours: 10:00-22:00

Cost
general, ¥2,980;
elementary school, ¥1,500;
pre-school, ¥800;
age three and younger, free

All you can eat and drink (80 min.)

1F Umaimono Yatai (vendors) ■ Hours: 11:00-16:00

1F Kaneyoshi souvenir shop ■ Hours: 10:00-17:00

2F Kaisendonya Kaishu (seafood rice bowl restaurant)
■ Hours: weekdays, 11:00-17:00; Sat., Sun., hol., 10:00-17:00

2F Gyoko no Shirasu Ichiba ■ Hours: 11:00-16:00
(house specialty, whitebait)



<http://gyoson.com>

〔 Odawara Hayakawa Gyoson 〕

☎ 0465-24-7800
1-9 Hayakawa, Odawara-shi

■ Hours: 10:00-22:00, daily (varies by branch)
■ Access:
5 min. by taxi from Odawara Station
5 min. on foot from Hayakawa Station
(JR Tokaido Line)

15 min. by taxi from Hakone-Yumoto Station

〔 Daini (Second) Gyoson 〕

☎ 0465-23-3360
1-11-2 Hayakawa, Odawara-shi
■ open daily

Reservations only

Point 2

Shrine and Temple Etiquette

Shrines are dedicated to Shinto gods, and temples to Buddhist figures such as bodhisattvas and various incarnations of Gautama. In both of these sacred places you should move and act calmly and speak quietly.



1 Bow slightly before entering a shrine's torii or a temple gate

The ground and space beyond a shrine's torii or a temple gate are considered sacred. Bow slightly before passing through torii or temple gate. As the center of the shrine walkway is the path of a sacred being, visitors should walk slightly to the right or left.



2 Rinse hands and mouth at the chozuya (ritual ablution pavilion)

After passing through shrine or temple entry, you'll find a small pavilion for rinsing hands and/or mouth before you step up to the sacred space occupied by shrine god or Buddhist deity.

Perform the ablution in five simple steps: ① with your right hand, dip the ladle into water and rinse your left hand; ② switch hands and rinse your right hand; ③ take the ladle with your right hand and pour some water into your left palm, and raise that cupped water to your mouth and rinse (taking care that your mouth does not directly contact any part of the ladle); ④ pour water onto your left hand to cleanse it; ⑤ raise the ladle cup straight up, perpendicular to the ground, to let the remaining water pour down the handle and clean it, and then return the ladle to its original spot on the fountain, face down.



3 Offering Ritual: Ring bell and toss money into offering chest

These days coins or bills are used as an offering to deities. In the past, these were made in the form of rice. There is no set amount to offer, so you should decide how much to give according to your wish or prayer, purification ritual, gratitude, or other matter. Temples usually don't have a rope pull, but if there is one, do as in a shrine; if none, make your silent pronouncement and toss gently into the slatted grate atop the offering chest.



4 Shrine Salutation: Bow twice, clap twice, and bow once to greet the deity

Bow deeply before a shrine's outer sanctuary and then make two bows, each at a 90-degree angle. Raise hands to chest center, Western-prayer style, and clap twice at a shrine but not a temple. Return hands to chest center and pray. Lower hands to sides and bow once, at a 90-degree angle. Bow again, deeply, and step back.

5 Shrine and Temple Option: amulet or paper votive

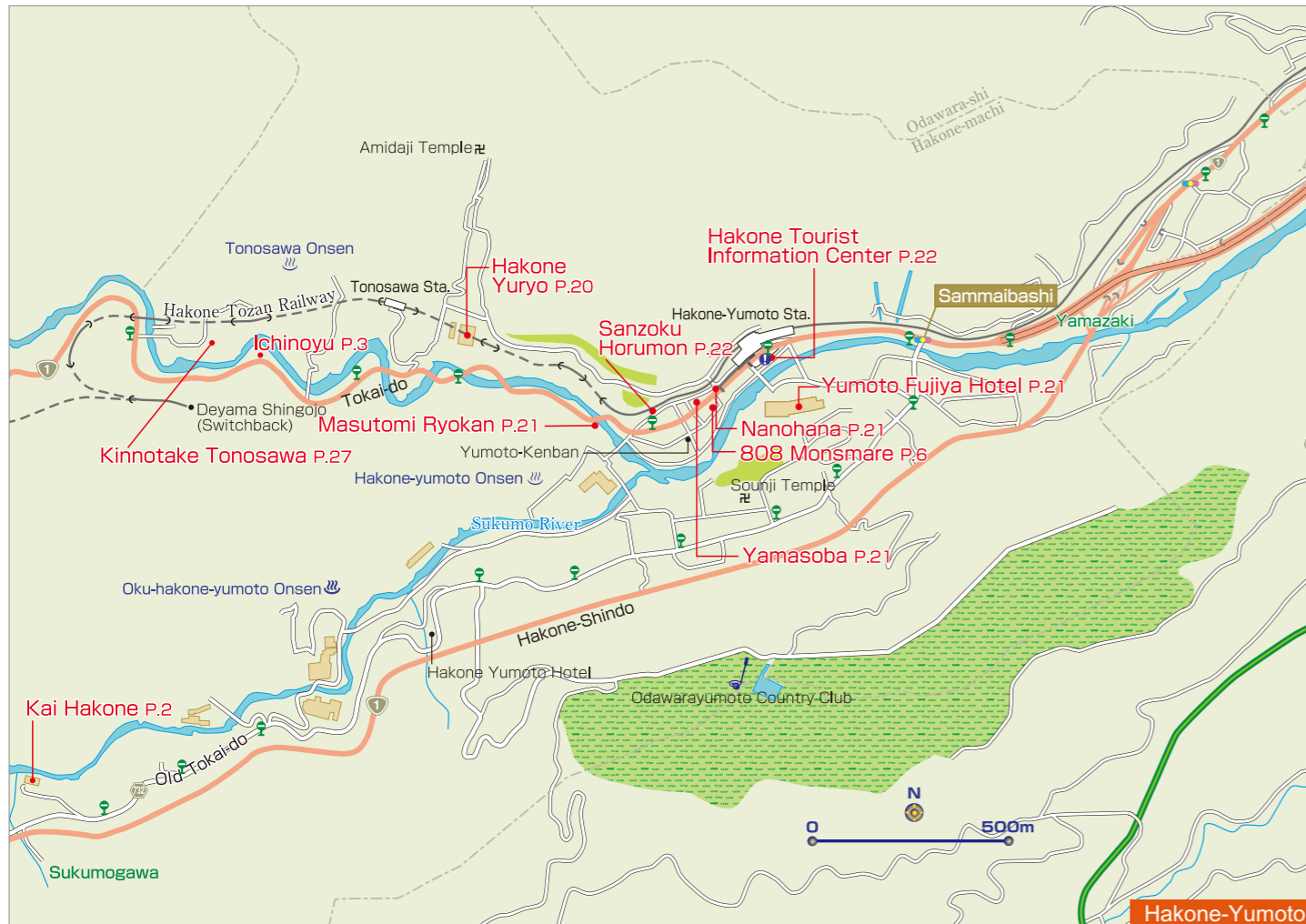
After making an offering, many visitors stop by a building where votives and amulets are sold. They also often draw paper fortunes. An amulet is worn to receive the deity's blessing; a paper votive is read to learn one's fortune. You also have the choice, according to custom, to tie the paper votive on a branch of a tree—on temple or shrine grounds—or you can take it home.



Distinguishing points of a temple

- Temples usually do not have torii but a formal structure of wood, often two stories high, as their gate. Bow slightly before passing through the overhead structure.
- When making offerings or praying at a temple, do not clap the hands. Bow deeply and then bring hands together, chest center (Western-prayer style), as you make your pronouncement.

(with thanks to Hakone Shrine)



1 Three-minute walk from Hakone-Yumoto Station. Photo op: Ajsai Bridge, in front of the hotel.
2 Discovered in the eighth century, Yumoto Hot Springs has the longest history of Hakone's 17 major hot springs.

Comfort Zone Deep in Nature

Rooms with a view of mountains or of Hakone's funicular train are inviting, as are dining options like izakaya or restaurants serving seasonal-focused Japanese, Western, and Chinese cuisine. What's more, refreshing immersion awaits you in outdoor open-air bathing set amid nature; large public indoor bathing, with room to move at ease; and private family bathing, all renowned for beautifying the skin.

Yumoto Fujiya Hotel 湯本富士屋ホテル

☎ 0460-85-6111

MAP P-20

- 256-1 Yumoto, Hakone-machi, Ashigarashimo-gun, Kanagawa
- Lunch: 11:30-14:00 (till 14:30 on Sat./Sun./holidays); Dinner: 18:00-20:30
- Open daily ■ 3-minute walk from Hakone-Yumoto Station (Hakone Tozan Railway) ■ <http://www.yumotofujiya.jp/en/>

Hot soba noodles topped with Japanese yam, wild vegetables, and egg yolk
Yamaimo Soba ¥1,180

Peak Taste You've Known and Loved for Half a Century

Healthy soba noodles served cold, heaped with grated daikon and mushrooms
Yamatake Soba ¥1,300

Rice bowl loaded with deep-fried jumbo shrimp, fish, and fresh veggies
Tendon (regular) ¥1,320

Hakone Jinenjo YAMASOBA
TEL: 0460-85-7889
704 Yumoto, Hakonemachi, Ashigarashimo-gun, Kanagawa
11:00 ~ 19:00 Closed: Thursdays
No Parking Credit Card not accepted
<http://www.yamasoba.com>

森の温泉。森のめし。
箱根温泉

HOT SPRINGS
Large communal baths: "Honden Yurakuan Oyu"
Indoor baths, open-air baths, pottery baths, and sauna facilities
Adults (including Age 13 and over): 1,500 yen
Children (Age 6-12): 750 yen
Opening Hours: Open 365 days a year (the resort may occasionally be closed for maintenance work)
Weekdays: 10:00-21:00 (last admission at 20:00)
Saturdays, Sundays and public holidays: 10:00-22:00 (last admission at 21:00)

Private open-air baths: "Hanare Yuya Kaden"
19 private rooms available
Reservations can be made by telephone (0460-85-8411) up to one month in advance.
Fee for private room use (per room, per 60-minute period):
Type 1 (7rooms) 4,300yen Type 2 (8rooms) 5,300yen Type 3 (4rooms) 6,300yen
Opening Hours: Open 365 days a year (the resort may occasionally be closed for maintenance work)
Weekdays: 10:00-21:00 (last admission at 20:00)
Saturdays, Sundays and public holidays: 10:00-22:00 (last admission at 21:00)

Hakone Yuryo
— A hot spring resort that's easily accessible from Tokyo as a day trip



1 Popular onsen manju Hakone no Otsukisama, 8-piece set, ¥920 (tax included)
2 Manju just-made by saturated steam are sold at our storefront.

Onsen Manju of Established Confectioner

Founded in 1905, Nanohana sells just-steamed onsen manju, sweet buns sold at hot springs. Inside a thin skin made with Okinawa black sugar is smooth sweet bean-paste seasoned with sea salt. Savor one of Hakone's famous confections as you stroll at ease through our hot-spring resort town.

Manju-ya Nanohana

まんじゅう屋 菜の花

☎ 0460-85-7737

MAP P-20

- 705 Yumoto, Hakone-machi, Ashigarashimo-gun, Kanagawa
- 8:30-17:30 (until 18:00 Sat./Sun./holidays) ■ Open daily
- 1-min. walk from Hakone-Yumoto Station (Hakone Tozan Railway)
- <http://www.nanohana.co.jp/>



1 Traditional Japanese-style architecture and warm hospitality are popular with overseas travelers.
2 Washoku meal of seasonal vegetables and fresh seafood is healthy and delicious. Enjoy our specially prepared breakfast, too.

Hot-Spring Inn Focused on Washoku

Relax in comfort and style at this Japanese inn, a five-minute walk from Hakone-Yumoto Station, where you can immerse yourself in a rooftop open-air bath (¥2,000/45 min., total fee for two) boasting the best hot-spring water quality in Hakone. As you bathe, enjoy a magnificent view of Hakone's beautiful sunrise or sunset beyond the mountains.

Mamane-yu Masutomi Ryokan

ままね湯 ますとも旅館

☎ 0460-85-5775

MAP P-20

- 656 Yumoto, Hakone-machi, Ashigarashimo-gun, Kanagawa
- 5-minute walk from Hakone-Yumoto Station (Hakone Tozan Railway)
- <http://www.mamaneyu.jp/>

Hakone Yuryo can be reached easily from both Haneda Airport and Narita Airport, and is situated in one of Japan's most outstanding hot spring resort areas.

Experience a comfortable, enjoyable train journey on the Odakyu Line!





1 Part of the fun is cooking luscious meat yourself on a *shichirin* grill at each table.
2 Terrace dining is a popular choice by day, so have a great time with friends and family at our spacious restaurant.

Fun and Popular Yakiniku Until Late

For succulent *yakiniku* (grilled meat), this is the place to go: rich varieties of meat served with care for handmade sauce, dressing, and even *kimchi*. Among many conveniences, like nearby Hakone-Yumoto Station, is our uniquely late closing time of 1:00 AM. Also savory are our reasonable lunch sets from ¥1,150 (excluding tax).

Sanzoku Horumon 山賊ホルモン

☎ 0460-85-5337

MAP P 20

- 724-5 Yumoto, Hakone-machi, Ashigarashimo-gun, Kanagawa
- 12:00-25:00 (last order 24:30)
- Open daily
- 3-minute walk from Hakone-Yumoto Station (Hakone Tozan Railway)



Hakone Tourist Information Center

Obtain the latest information of the whole Hakone area, such as sample trip plans and the best spots of the season here. English-speaking staff is always waiting to help plan your trip around Hakone.

Hakone Tourist Information Center

Open hours 9:00~17:45 (open every day)

TEL 0460-85-5700

Experience Hakone

Yosegi-Zaiku



Hakone's traditional marquetry craft dates back to the Edo period (1603-1867). Experience making a trick box (*karakuri-bako*) using beautiful pieces of wood.



Inside Hakone Gora Park is Hakuundo tearoom, built during the Taisho era (1912-1926), where you can tour the space and enjoy powdered green tea (*matcha*) and Japanese sweets.

Tencha

Point 3

Japanese Customs for Rooms and Meals

Please take particular care for characteristic Japanese culture and customs when eating meals or staying at *ryokan* (Japanese-style inns) which have a traditional Japanese atmosphere.



1 It is standard to remove your shoes in the entry hall before entering a room.

In the front entryway take off your shoes while facing forwards and then enter the room. You should then bend down and turn your shoes to face the other way, aligning them neatly.



2 Bowls should be held in your hand when eating.

The bowl containing your rice as well as your soup bowl and other bowls should all be held in your hand while eating from them. Don't squeeze the chopsticks too strongly, hold them vertically, cross them over, or stab your food with them.



3 Try wearing your yukata around the ryokan.

A yukata is a traditional type of Japanese clothing, often worn after bathing or while sleeping. Be sure to cover your body first with the right-hand side, then left-hand side. When staying at a ryokan, you're welcome to wander around in yukata.

Simple Facts about Japanese-Style Rooms and Tatami Mats

- A Japanese-style room is one laid with tatami mats. One appealing feature is the rooms may be used for many purposes, such as a living room, bedroom, or guest room. A single tatami mat is roughly 180 cm x 90 cm, and is counted as 1 'jo' (a specific Japanese counter for tatami mats).
- Tatami mats provide Japan-style flooring. The face of tatami mats is woven grass, meaning they are highly absorbent, warm in winter, and cool in summer. Their fragrance also has a relaxing effect.

Wishing at Shrine Fountain



In a precinct of Hakone Shrine is the nine-headed dragon shrine of Kuzuryu, before which is a basin gushes out holy water of the dragon god. Write your wish and pledge to fulfill it on a slip of paper and release it into the basin.



Tree Climbing and Zip Line Adventure

Active travelers will enjoy our recommended forest adventure of entering a magic space of enormous 300-year-old trees and a mountain stream by zip-lining from tree to tree 10 meters off the ground.



Armor and Ninja Costumes

At Odawara Castle, dress like a samurai in armor and helmet, a kimono-clad princess, or in the costume of Fuma ninja who supported the Hojo Clan.

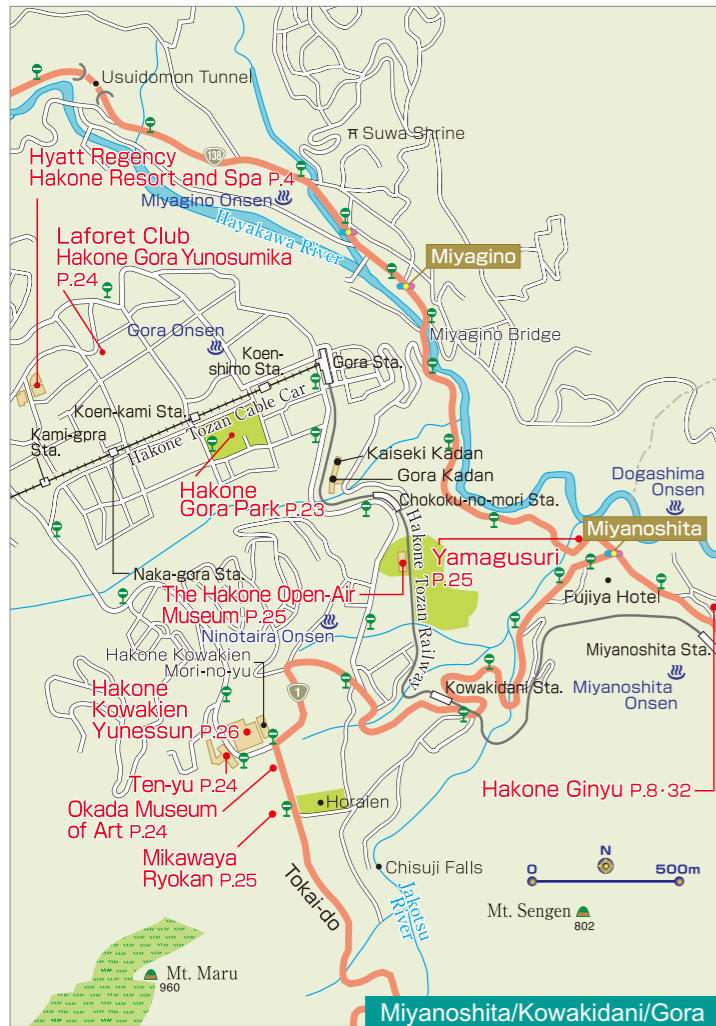
1 **Hakone Trick Museum** ☎ 0460-83-6604
10:00-17:00 (last admission, 15:00) ■ Daily [MAP P28 ②]
■ Fee: Trick box (small), from ¥1,980 ■ Reservation required

2 **Hakuun-do, Hakone Gora Park** ☎ 0460-82-2825
10:00-12:00, 13:00-16:00 ■ No fixed holidays [MAP P24]
■ Gora Park Admission Fee: adults (ages 13 and over), ¥550; Hakuun-do tearoom, ¥700 (tea & sweets included)

3 **Hakone Shrine** ☎ 0460-83-7123
8:00-17:00 ■ Daily ■ Fee: ¥500 [MAP P28 ②]

4 **Forest Adventure Odawara** ☎ 080-4330-4030
9:00-17:00 ■ Closed: No fixed holidays [MAP P31]
■ Fees (accident insurance included): adults (18 and older), ¥3,600; children (1st grade, elementary school, to 17), ¥2,600 ■ Family discount available ■ Reservation required

5 **Tokiwagi Gate, Odawara Castle Honmaru Hiroba** ☎ 080-6887-2154
9:00-16:00 (last admission, 15:30) ■ Daily [MAP P16]
■ Fees (costume dress-up): adults (junior high schoolers and older), ¥500; children (elementary schoolers and younger), ¥300



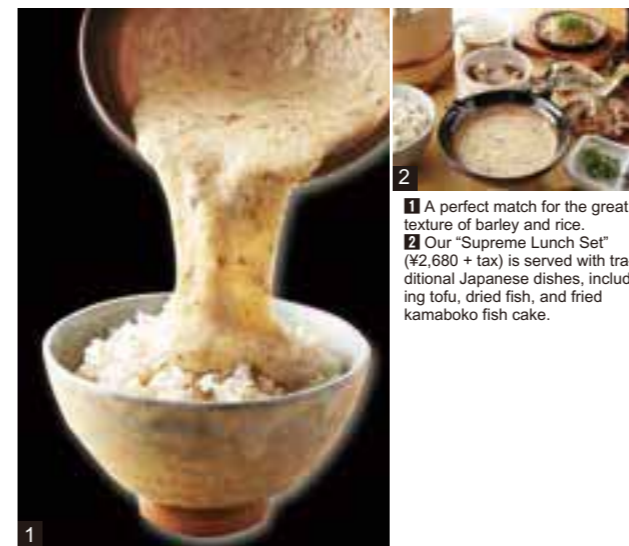
1 Magnificent mural of Fujin and Raijin (wind and thunder gods, respectively) by Fukui Kōtarō, 12 x 30 meters, entitled Wind/Time, sweeps you into a mythic world from the museum entrance.
2 Dining facility in a renovated Japanese-style house has a garden that lets you bathe in the richness of Hakone nature.

Swept Up by Time and Beauty

The Okada Museum of Art boasts one of the largest indoor exhibition spaces in Hakone. About 450 Japanese and Asian paintings, ceramics, and other works from ancient times to the present are regularly exhibited throughout its five floors. Immerse yourself first in a world of beauty and then in a dining facility and footbath cafe for a relaxing experience complete with aesthetic appreciation.

Okada Museum of Art 岡田美術館

☎ 0460-87-3931 MAP P24
 ■ 493-1 Kowakidani, Hakone-machi, Ashigarashimo-gun, Kanagawa ■ 9:00-17:00 (no admission after 16:30) ■ Open daily ■ Entry fees: adults/university students, ¥2,800; elementary/junior high/high school students, ¥1,800; garden admission, ¥300.
 ■ 20-minute bus ride from Hakone-Yumoto Station (Hakone Tozan Railway) and 1-minute walk from Kowakien bus stop. ■ URL: <https://www.okada-museum.com/en>



Delicious Traditional Japanese Food

Japanese yam is a beloved traditional food from ancient times. Its sticky texture is a perfect match for Japanese rice! Experience the real thing for traditional Japanese cuisine and culture with our fine set menu: tofu, dried fish, and miso soup. Consult with us as well for halal and vegetarian menu.

Hakone Jinenjonomori Yamagusuri 箱根 自然著の森 山薬

☎ 0460-82-1066 MAP P24
 ■ 224 Miyanoshita, Hakone-machi, Ashigarashimo-gun, Kanagawa
 ■ Weekdays: 10:00 - 20:30; Sat./Sun./holidays: 7:00 - 20:30 (last order, 20:00)
 ■ Open daily
 ■ 9-minute walk from Miyanoshita Station (Hakone Tozan Railway)

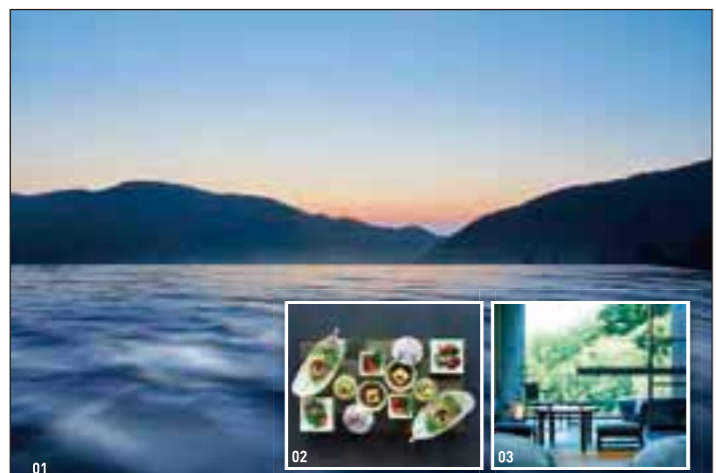
Harmony of Sculpture and Nature

The Hakone Open-Air Museum, opened in scenic Hakone in 1969. It was the first museum in Japan devoted to sculpture in the open air. Situated on roughly 70,000 square meters of parkland, the Museum has distant vistas of mountain and sea that change with the changing seasons.

THE HAKONE OPEN-AIR MUSEUM

彫刻の森美術館 0460-82-1161 MAP P24

*1121 Ninotaira, Hakone-machi, Ashigarashimo-gun, Kanagawa *9:00-17:00 (Last admission: 16:30) *365 days/year *Adults: 1,600 yen University and high school students: 1,200 yen Middle and elementary school students: 800 yen *Hakone Tozan Railway to Chokoku-no-Mori Station, from which it is a 2-minute walk to the museum *<http://www.hakone-oam.or.jp>



01. Gaze at the endless horizon. This gorgeous open-air onsen will complete your stay at Hakone.
 02. Ten-yu chefs present Japanese fusion courses with the top-quality delicacies.
 03. Though all rooms have tatami mats, you can sleep on Western-style beds.

Escape to rich nature matched with stylish tradition

Welcome to Hakone Kowakien Ten-yu, a true sanctuary facing magnificent mountain in Hakone, away from your bustling city life. The concept of our ryokan is the harmony of authentic Japanese hospitality and the nature. You can watch the sunrising view while bathing in our enormous open-air onsen with infinite horizon view. In addition, all rooms come with its own private open-air bath. In the evening, get excited for the beautifully presented delicious Japanese cuisine at your table. Enjoy the heavenly experience of the true Japanese service throughout your stay.

箱根小涌園 天悠 Hakone Kowakien TEN-YU
 TEL. +81-465-20-0260 <https://www.hakone-tenyu.com/>
 Address: 1297 Ninotaira, Hakone-machi Check-in: 3pm Check-out: 11am Access: Approximately 20-minute bus ride from Hakone Yumoto Station (Hakone Tozan Train). Located right by the Ten-yu bus stop. Attraction: Hakone Open-Air Museum and Hakone Gora Park is only 6-minute bus ride from Hakone Kowakien Ten-yu.



1 Time for a nighttime chat in the irori-style living room.
 2 Premier room with an outdoor hot spring bath for pleasurable immersion anytime, in private and at your own pace (overnight stay from ¥20,000).

Stay at a Modern Japanese Hot Spring Inn

Take off your shoes for a delightful stay amid the hospitality of our hot spring inn, and relax in a guestroom offering calm ambience, contemporary Japanese décor, and free WiFi. Luxuriate in outdoor baths set not only in a Japanese garden, a source of pride, but also some guestrooms. Good taste also awaits in our restaurant, where the latest in Japanese-Western fusion is served with a wondrous view of the Hakone mountains.

Laforet Club Hakone Gora Yunosumika ラフォーレ倶楽部 箱根強羅 湯の棲

☎ 0460-82-2121 MAP P24
 ■ 1320 Gora, Hakone-machi, Ashigarashimo-gun, Kanagawa
 ■ 5-minute walk from Naka-Gora Station on Hakone Tozan Cable Car Line
 ■ <http://www.laforet.co.jp/gora/>

Traditional Japanese Inn Since 1883

Enjoy the true spirit of Japanese hospitality as experienced from 1883 at a Registered Cultural Property establishment

503 Kowakidani, Hakone-Machi, Ashigarashimo-gun, Kanagawa
 Access by public transportation is nearby at the Horai-en bus stop from Hakone-Yumoto Station (bound for Moto-Hakone Port or Hakone-machi Port), a 20-minute ride.

三河屋旅館 MIKAWAYA RYOKAN
 TEL. +81(0)460-82-2231
<http://www.hakone-mikawaya.com/language/09.en.htm>

Let's enjoy unique spas!! YUNESSUN Spa Resort

YUNESSUN (swimsuit area)



Wine Spa

Hakone Kowakien Yunessun Usage Notes

As visible tattoos are strictly forbidden within the pool and pool area, we strongly recommend the use of swimwear that hides such body art or rash guards, the latter being available for rent.

Mori no Yu (bathing area)



Restaurants



We have many kinds of restaurant: A buffet, Italian, Japanese, and more that can be enjoyed by guests and non-guests alike.

Shopping



Mori no Yu you can feel closer to nature of Hakone while bathing. We also have private bath (¥3,000/hour-).

Shop "Mio Mall" is boosting the wide selection of items. You'll find Hakone souvenirs!

Hot Spring Amusement Park and Spa Resort

Hakone Kowakien YUNESSUN Spa Resort has many kind of spas. You can have fun at this all-weather facility, even on rainy days. You'll find many fun spas here. And we have many kind of shops and restaurants that you can enjoy all day.

SPECIAL COUPON

000-2161

LET'S HAVE FUN YUNESSUN SPA RESORT!!

- > You can rent a swimsuit **50% OFF**
- > You can use free towels (1 set for 1 person)

	Adult	Child
Combined (YUNESSUN & Mori no Yu)	¥3,500 ▶ ¥2,800	¥1,400 ▶ ¥1,500
YUNESSUN (swimsuit area)	¥1,800 ▶ ¥2,000	¥1,500 ▶ ¥1,100
Mori no Yu (bathing area)	¥2,500 ▶ ¥1,300	¥1,000 ▶ ¥700

This is discount ticket, please show this at the front desk. Valid: 2020/12/31

Transportation (By bus and train)

- From Odawara Sta., take a bus bound for "Hakone-jinja-iriguchi/Hakonemachi-ko" and get off at "Kowaki-en" (approx.40min.)
- From Hakone-Yumoto Sta., take a bus bound for "Hakone-jinja-iriguchi/Hakonemachi-ko" and get off at "Kowaki-en" (approx.20min.)

Business hours [YUNESSUN] 9:00-19:00 / [Mori no Yu] 11:00-20:00

Parking fee ¥1,200/day Seniors (120 and over) and disabled get discounts. For more information, please contact to us. Child admission age starts from 3 years old to elementary school age.

Hakone Kowakien YUNESSUN
Tel.0460-82-4126 **YUNESSUN Spa Resort**

1297, Ninotaira, Hakone-machi, Ashigarashimo-gun, Kanagawa-Japan 250-0407
Closed: Jun. 4(Tue.)-7(Fri.), Dec. 3(Tue.)-6(Fri.)

<https://www.yunessun.com/en/>

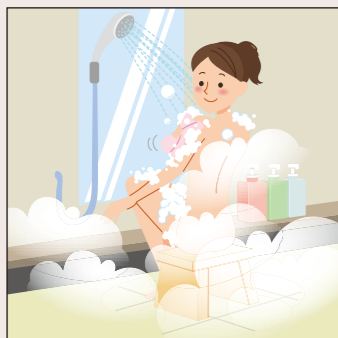


Pointers on Bathing Etiquette

Point 4

These are places to relax and heal your mind and body, so enjoy your time calmly and refrain from any public pool-type antics.

1 Wash before entering the bath!



Wash face and body, then rinse off all soap before entering the tub. Enter naked, without wearing a towel, and enjoy soaking—only soaking.

2 No towels in the tub



Enter the bath slowly, to avoid splashing. As a matter of public hygiene, don't put or let your towel into the water and, in general, follow common-sense manners as well as these etiquette pointers.

3 Dry off after bath and before entering dressing room



Dry off with a towel in the bathing area, before entering the dressing room, to prevent the dressing room floor getting wet.

Onsen FAQs

- Onsen water can be quite dense and the heat intense, so avoid getting dizzy by limiting your time: don't soak too long (no more than 15 minutes). Immerse yourself up to neck or waist, no deeper, and be sure to hydrate before and after a bath.
- Bath water may have some "floaties" that are natural mineral components, not trash or filthy bits, so don't worry if something tiny comes your way.

Inviting Warmth of Japanese Culture: The Pleasure of Onsen (Hot Springs)

Stay & Enjoy

1 Matsuzakaya Honten

松坂屋 本店



Japan's Great Inn for Over 350 Years

Since 1662, the Inn has maintained the traditions which reflects the History that will make your trip memorable in one of the Hakone's leading historical onsen.

2 Kinnotake Tonosawa

金乃竹 塔ノ澤



Remarkable Immersion in Nature

It has an extensive site of 66,116 Square Meter integrated with nature. All the rooms with an out-door bath for the mental and physical liberation with outstanding service.

3 Okudo Saryo Rikyuan

おくど茶寮 利休庵



Savory Dining and Bathing

Savor healthy, meat-free kaiseki cuisine prepared with care. Also enjoy the milky-white hot spring.



5 Hakone Botanical Garden of Wetlands and Mori no Café HAKONE

箱根湿生花園と「森のカフェ HAKONE」



Floral Delight in Four Seasons

About 1,700 floral varieties mainly of those grown in Japan have been collected, abounding in seasonal beauty that makes this garden a popular spot for taking photos. The adjoining Mori no Café HAKONE, a great venue offering Instagram posting, serves dishes with local vegetables and organic herbs that can be savored in a verdant space.

4 Kinnotake Sengokuhara

金乃竹 仙石原



Hakone's Premier Luxury Inn

Enjoy the rooms with an outdoor bath emphasizing private feeling. An accommodation full of playful spirit with ancient stories as a theme.

1. Matsuzakaya Honten

57 Ashinoyu, Hakone-machi, Ashigarashimo-gun, Kanagawa
☎0460-83-6511
<http://www.matsuzakaya1662.jp/>
MAP▶ P26②

2. Kinnotake Tonosawa

191 Tonosawa, Hakone-machi, Ashigarashimo-gun, Kanagawa
☎0460-85-9800
<http://kinnotake-tonosawa.com/>
MAP▶ P18

3. Okudo Saryo Rikyuan

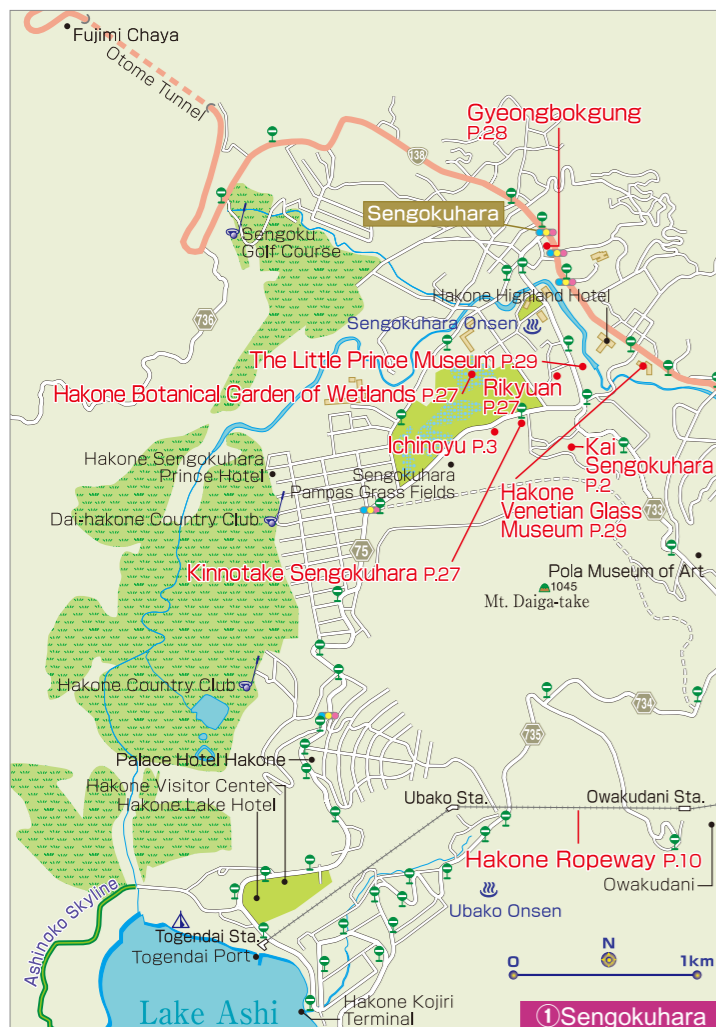
817-460, Sengokuhara, Ashigarashimo-gun, Kanagawa
☎0460-85-8282
<http://www.sengokuhara.com/>
MAP▶ P26①

4. Kinnotake Sengokuhara

817-342, Sengokuhara, Ashigarashimo-gun, Kanagawa
☎0460-85-9200
<http://www.kinnotake.com/>
MAP▶ P26①

5. Hakone Botanical Garden of Wetlands and Mori no Café HAKONE

817, Sengokuhara, Ashigarashimo-gun, Kanagawa
☎0460-84-7293 <http://hakonekanko.com/>
Open 9:00-17:00 / Closed from Dec. 1 to Mar. 19 / Admission: ¥700 adults, ¥400 primary school students
Mori no Café HAKONE 9:00-16:00
MAP▶ P26①



1 The garden overlooking Owakudani is famous as a sightseeing spot of Hakone.
2 Enjoy a live performance of canzone in an adjoining cafe-restaurant.

Moved by Sparkling Glass Art

This is the only museum in Japan where you can see a complete presentation of Venetian glass. Our extensive collection showcases Venetian glass art, centering on works from the 16th to 19th centuries as well as those by innovative contemporary artists after the 20th century. Visitors will experience an excitement similar to that known by European royals and nobles at those times.

Hakone Venetian Glass Museum
箱根ガラスの森美術館

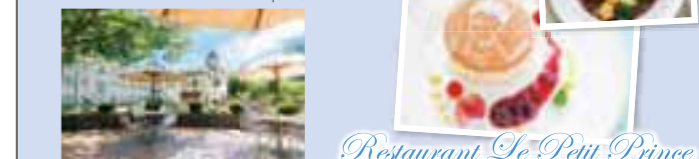
☎ 0460-86-3111 MAP-P28 ①
■ 940-48 Sengokuhara, Hakone-machi, Ashigarashimo-gun, Kanagawa ■ 10:00-17:30 (last admission: 17:00) ■ Open daily (excluding 11 days after the second Monday of January) ■ Admission fees: adults, ¥1,500; high school and university students, ¥1,100; primary and junior high students, ¥600. ■ 25-minute bus ride from Hakone-Yumoto Station (Hakone Tozan Railway) ■ <http://www.hakone-garasunomori.jp>

The Little Prince Museum

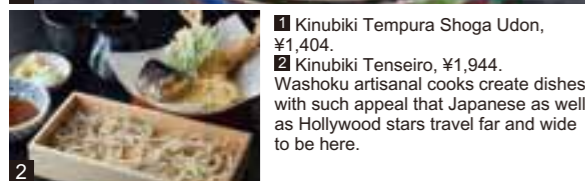
箱根サンゴシティ MUSEE DU PETIT PRINCE DE SAINT-EXUPÉRY A HAKONE TBS



Museum 9:00am~6:00pm (last admission 5:00pm)
Exhibition hall and Video hall business hours 9:00am~5:30pm
Restaurant 11:00am~6:00pm (last order 5:30pm)
Sweets menu 11:00am~5:00pm, last order
Meal menu 11:30am~5:00pm, last order



909 Sengokuhara, Hakone-machi, Ashigarashimo-gun, Kanagawa-ken
TEL:0460-86-3700 <http://www.tbs.co.jp/l-prince/en/>
Closed day : The second Wednesday except March and August



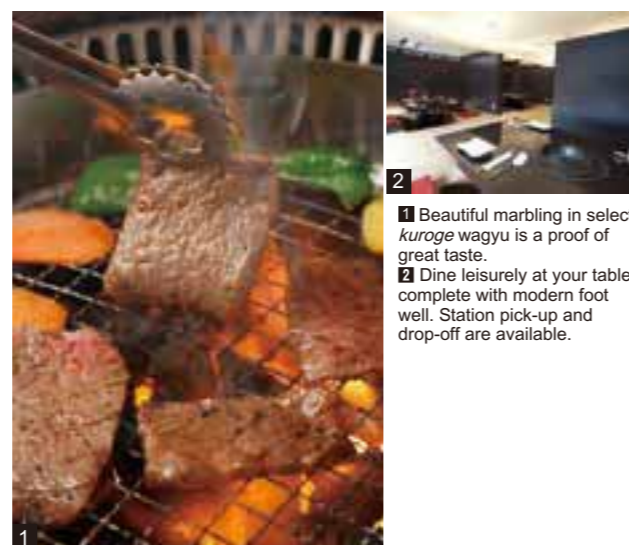
1 Kinubiki Tempura Shoga Udon, ¥1,404.
2 Kinubiki Tenseiro, ¥1,944.
Washoku artisanal cooks create dishes with such appeal that Japanese as well as Hollywood stars travel far and wide to be here.

Renowned and Novel Noodles

Kinubiki Udon offers finely rendered *udon* noodles of the highest-grade Japanese wheat and well-known Hakone water, kneaded together with grated Japanese burdock and sesame. This trademark udon is registered and enjoyed only in this restaurant.

Kinubiki no Sato
絹引の里

☎ 0460-83-5151 MAP-P28 ②
■ 6-10 Moto Hakone, Hakone-machi, Ashigarashimo-gun, Kanagawa
■ Daily Hours (with seasonal variation): 11:00-18:00, last order ■ Open daily
■ 40-minute bus ride from Hakone-Yumoto Station (Hakone Tozan Railway)
■ <http://www.kinubikinosato.jp> (in Japanese)



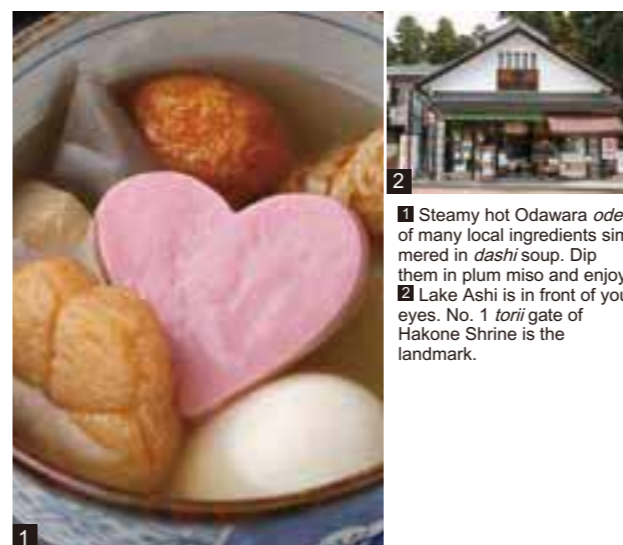
1 Beautiful marbling in select *kuroge* wagyu is a proof of great taste.
2 Dine leisurely at your table, complete with modern foot well. Station pick-up and drop-off are available.

Yakiniku Restaurant for Fine Kuroge Wagyu

Come to this popular *yakiniku* ("grilled meat") restaurant and savor the rich taste of quality *kuroge* wagyu (Japanese black beef) at reasonable prices. Cook your selection atop a smokeless grill, dip it in our secret house sauce, and delight in the umami of this fine beef cut. Also enjoy a wide variety of a la carte dishes. With closing hours at 10 PM, you can sit back and dine at leisure with family and friends.

Korean Cuisine Yakiniku Gyeongbokgung
韓国料理・焼肉 景福宮

☎ 0460-84-5529 MAP-P28 ①
■ 74-1 Sengokuhara, Hakone-machi, Ashigarashimo-gun, Kanagawa ■ 11:30-14:00/17:30-22:00 (last order 21:30) ■ No fixed holidays ■ 25-minute bus ride from Hakone-Yumoto Station (Hakone Tozan Railway) ■ URL: <http://www.okada-museum.com/en>



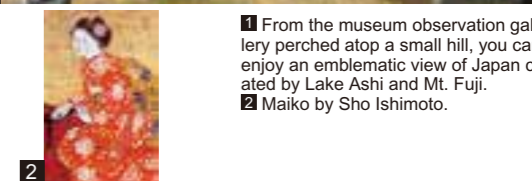
1 Steamy hot Odawara *oden* of many local ingredients simmered in *dashi* soup. Dip them in plum miso and enjoy.
2 Lake Ashi is in front of your eyes. No. 1 *torii* gate of Hakone Shrine is the landmark.

Savor Soul Food While Viewing Lake Ashi

Odawara's Maruu Tashiro, a long-established shop specializing in *kamaboko* (boiled fish paste) opened its branch in front of Motohakone Port of Hakone Pirate Ship in July 2018. Enjoy our array of goods fit for eating while walking—freshly deep-fried rounds of boiled fish paste, steamy hot *oden*, and Hakone *manju*. Space for eating-in is available.

Maruu Tashiro Motohakone Port Shop
丸う田代 元箱根港店

☎ 0460-83-5377 MAP-P28 ②
■ 6-21 Moto-Hakone, Hakone-machi, Ashigarashimo-gun, Kanagawa
■ 10:30-16:30 ■ No fixed holidays
■ 40-minute bus ride from Hakone-Yumoto Station (Hakone Tozan Railway)



1 From the museum observation gallery perched atop a small hill, you can enjoy an emblematic view of Japan created by Lake Ashi and Mt. Fuji.
2 Maiko by Sho Ishimoto.

Nihonga Museum with a Magnificent View

The museum overlooks Lake Ashinoko, and on a clear day you can see Mt. Fuji. There are art exhibitions showcasing various themes centering on Nihonga selected from 4,000 pieces in our collection, ranging from works by great masters to fresh young talent. Enjoy tea served in artistic ceramics at the tea lounge. Hot sandwiches and pizza are also available.

Hakone Ashinoko Narukawa Art Museum
箱根・芦ノ湖 成川美術館

☎ 0460-83-6828 MAP-P28 ②
■ 570 Moto-Hakone, Hakone-machi, Ashigarashimo-gun, Kanagawa
■ 9:00-17:00 (last admission: 16:45) ■ Open daily ■ Admission: adults, ¥1,300; high school and university students, ¥900; primary and junior high students, ¥600.
■ 35-minute bus ride from Hakone-Yumoto Station (Hakone Tozan Railway)
■ <http://www.narukawamuseum.co.jp>

Staff
Publisher
 Kazuhiro Nakamura

Editor in Chief
 Yoshiko Maki

Deputy Editor in Chief
 Koichiro Uramoto

Sales & Promotion Staff
 Sonomi Fujisawa Kayoko Tanaka

Editor
 Atsuko Odaira Kayoko Aihara
 Hiroko Matsubayashi Mika Kuruma

Designer
 Azusa Takani Kana Inaba
 NIPPON PRICOM,inc.

Photographer
 Junichi Ihara Megumi Sakurai
 Junko Nanba

Map Design
 Shigeko Kobayashi

DTP Staff
 Junna Shirasawa

Special Thanks
 McDAVIS ASSOCIATES,INC.
 NIPPON PRICOM,inc.

Cooperation 協力
 Odakyu Electric Railway Co., Ltd.
 小田急電鉄株式会社
 Odakyu Hakone Group
 小田急箱根グループ
 HAKONE TOWN
 箱根町
 HAKONE Convention Bureau
 箱根コンベンションビューロー
 Hakone Town Tourist Association
 一般財団法人箱根町観光協会
 Odawara City
 小田原市

Issue 発行
 INCLUBE Co., Ltd.
 株式会社インクルーブ

http://www.mismonet.com

本誌の広告に関するお問い合わせは
 株式会社インクルーブ
 〒215-0021
 神奈川県川崎市麻生区上麻生1-5-1
 りそな新百合ヶ丘ビル5F
 営業企画部 ☎044-959-3750

Printing and bookbinding 印刷・製本
 SANKEI SOGO PRINTING Corporation
 サンケイ総合印刷株式会社

次号は2019年11月発行予定です。



- A** Odawara 小田原
- B** Hakone-Yumoto 箱根湯本
- C** Miyanoshita / Kowakidani / Gora
宮ノ下・小涌谷・強羅
- D** Sengokuhara 仙石原
- E** Lake Ashi 芦ノ湖

Hakone/Odawara MAP

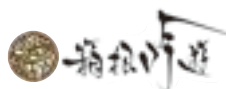


HAKONE GINYU

連山を見渡し
山紫水明の
境に遊ぶ



*The guest feel 5 senses in scenery and find so many impression,
This is our Ryokan concept.*



TEL. 0460-82-3355