

# JAPAN



2023  
Summer/  
Autumn

vol.15

FREE

English  
英語版

# HAKONE

## HAKONE / ODAWARA / Mt. FUJI VISITOR'S GUIDE

# 箱根

Detailed  
**MAP**  
Included

Mt. Fuji and Lake Ashi

- Area Maps & Main Spots
- Breathtaking Views of Mt. Fuji

- Hakone's Various Rides
- Japanese Culture and Etiquette

Mi-s-mo  
【ミスモ\*はこね】



Rooms



Activities



Dining

## "Japanese Auberge" in classic hot spring regions

KAI is a leading brand of hot spring ryokan where every establishment offers a contemporary take on traditional Japanese inn whilst keeping Western comforts. KAI invites one to discover the multifaceted aspects of Japan through natural hot springs, exploration of local arts and entertainment, and classic Kaiseki-style course meals using local and seasonal flavors. Experience Washoku, Japanese cuisine, presented on carefully selected ceramics for full exposure to culinary sensations.

Total 22 properties all over Japan



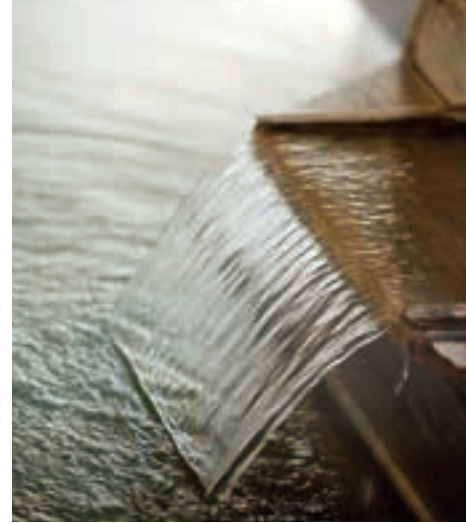
<https://hoshinoresorts.com/en/brands/kai/>





# Contents

- 4 Getting to Hakone
- 6 Breathtaking Views of Mt. Fuji
- 8 Must See in Hakone
- 10 Let's Enjoy Hakone's Various Rides!



## Area Attractions

- 13 Odawara, Hakone-Yumoto
- 17 Miyanoshita, Kowakidani, Gora, Sengokuhara, Lake Ashi
- 22 Hakone / Odawara Map

## Culture and Etiquette

- 12 History of Hakones, Odawara
- 14 Japanese Customs for Rooms and Meals
- 18 Shrine and Temple Etiquette
- 19 Simple Japanese
- 20 Pointers on Bathing Etiquette

Information published in this magazine is as of July, 2023. There may be cases of prices having been changed since then, due to consumption tax rate revision and other reasons, so please check with the stores before use. And there are instances of consumption tax or bathing tax, other service fees applied separately. The overnight stay prices are a single person charge on weekday (Monday to Thursday and Sunday, excluding the day before a holiday) overnight stay with two meals, for a room by two persons unless otherwise stated. ※ The details of what have been referred in this magazine could be changed or discontinued due to weather or other reasons. Please check with the organizer/facility/store before heading out.

Please note that the opening/business hours, charges, closed days, event opening periods and menu contents of facilities and stores published in this magazine are subject to change without notice.

Unauthorized reproduction/copying of photographs, illustrations, maps or articles in this magazine are strictly forbidden.

**Mishima Skywalk**

Japan's longest suspension bridge for walkers!  
Enjoy a magnificent view of Mt. Fuji on your journey!

400 meters long

313 Shinden Sasahara, Mishima-shi, Shizuoka Tel:055-972-0084 Hours: 9:00-17:00  
Entry: adults, ¥1,100; ages 12 to 17, ¥500; ages 6 to 11, ¥200

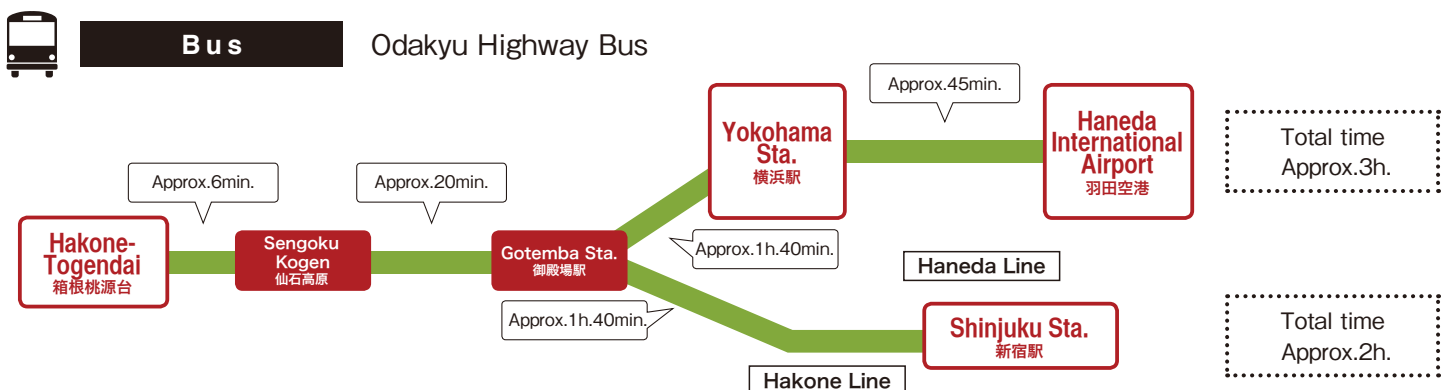
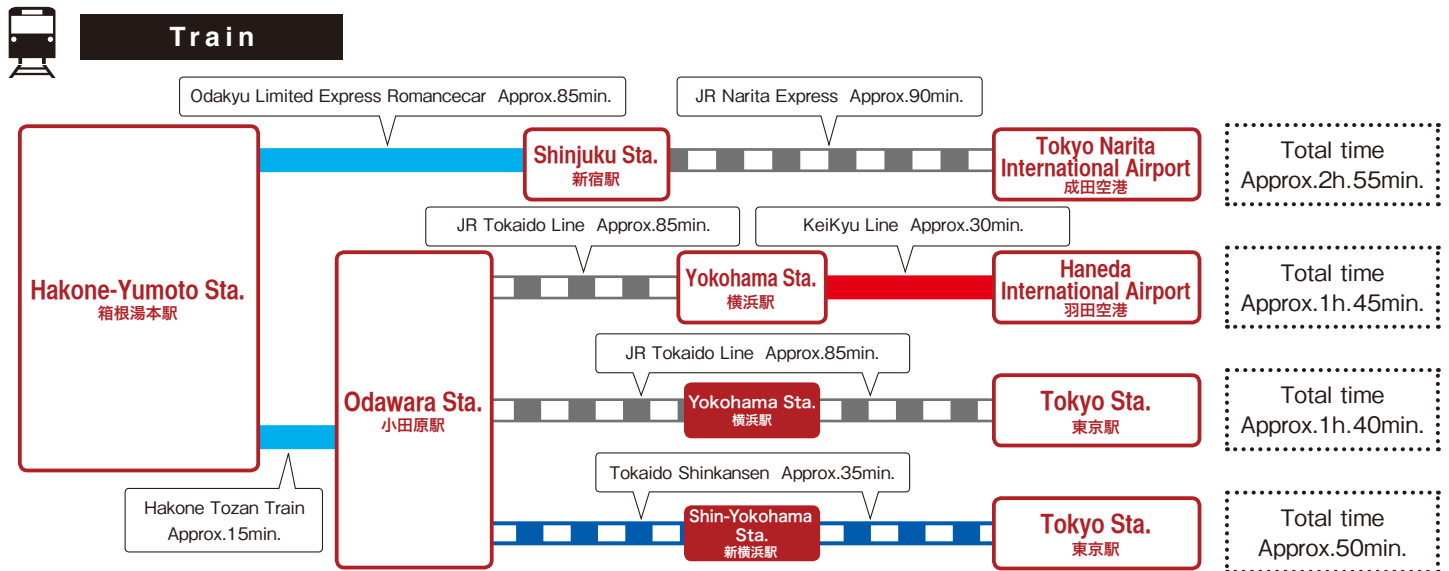
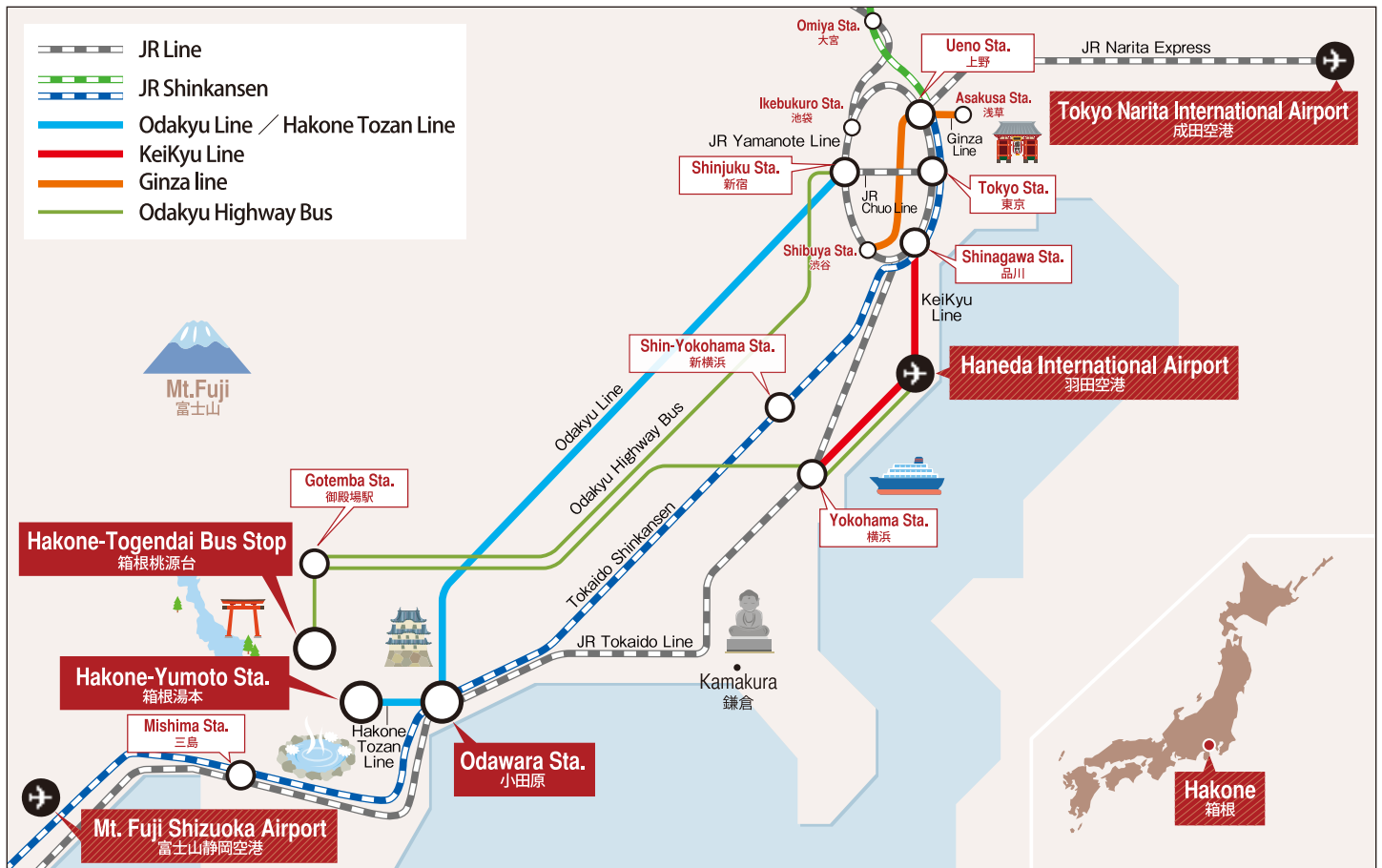
**By car: abt. 15 mins.**  
from Mishima Shinkansen Sta.

**By car: abt. 30 mins.**  
from Hakone-Yumoto

Map showing the location of Mishima Skywalk relative to Gotemba IC, Hakone-Yumoto, Ashinoko, Nagaizumi-numazu IC, Izu-jukan Expressway, Numazu IC, Mishima Sta., Mishima-tsukahara IC, and Atami Sta.

Official website

# Getting to Hakone



\*It is an example. Estimated time is subject to change depending on operation and road condition.





## Kinnotake Saryo

### Spend a Day at a Japanese Inn

This eight-room inn (ryokan) is yours to experience for a day, as you like. Enjoy the relaxing pleasures of an open-air bath followed by the tasty delight of Kuroge Wagyu Beef Shabu-Shabu Gozen in the genuine setting of a Japanese ryokan decorated in a bright red ochre (bengala) as its base tone. Day plans start at ¥22,000 for four hours in a room with its own open-air bath (1F); or ¥14,300 for three hours in a Japanese-style room (2F).

- ① Hibiki: first-floor room with a private open-air bath.
- ② Kuroge Wagyu Beef Shabu-Shabu Gozen: savory delight by our head chef, whose polished skills derive from 16 years in Kyoto.
- ③ Each of the four rooms on the first floor, including Hibiki, has its own milky hot-spring bath flowing from its source.



### Seafood Sushi Fresh from the Port

Carefully selected seasonal seafood is delivered fresh from nearby fishing ports. Enjoy sushi and side dishes prepared by our chef, trained at a famous restaurant for 15 years. For added dining pleasure is a wide selection of Japanese sake sure to match your taste and dish choice.

- ① Chef's Course (Taisho Omakase), from ¥17,600.
- ② Enjoy sitting at the counter or table as well as in a private room.



## Sushi Sho



## Café Dining LuDERA



### Fresh, Savory International Cuisine

Sit back and relax in open-space dining, where you'll be served casual international cuisine of carefully select local ingredients like fresh vegetables and milk. You'll also enjoy access to Wi-Fi and outlets at counter seats (on 2F).

- ① Luscious hamburger of 150-g Kanagawa Prefecture brand Ashigara-gyu beef (¥1,800).
- ② Calm atmosphere comes from the warmth of wood and ornamental foliage plants.

# Wonderful Day Trips to Hakone

### Kinnotake Saryo

817-460 Sengokuhara, Hakone-machi,  
Ashigarashimo-gun, Kanagawa  
TEL. 0460-85-8282  
<https://sengokuhara.com/>

### Sushi Sho

642-1 Yumoto, Hakone-machi,  
Ashigarashimo-gun, Kanagawa  
TEL. 0460-83-3636  
16:00-21:00 (last order), (20:00 for courses);  
11:30-16:00 (last order), Sun.  
Closed Wed. & Thu. (holidays excluded)  
<https://hakone-sho.jp/>

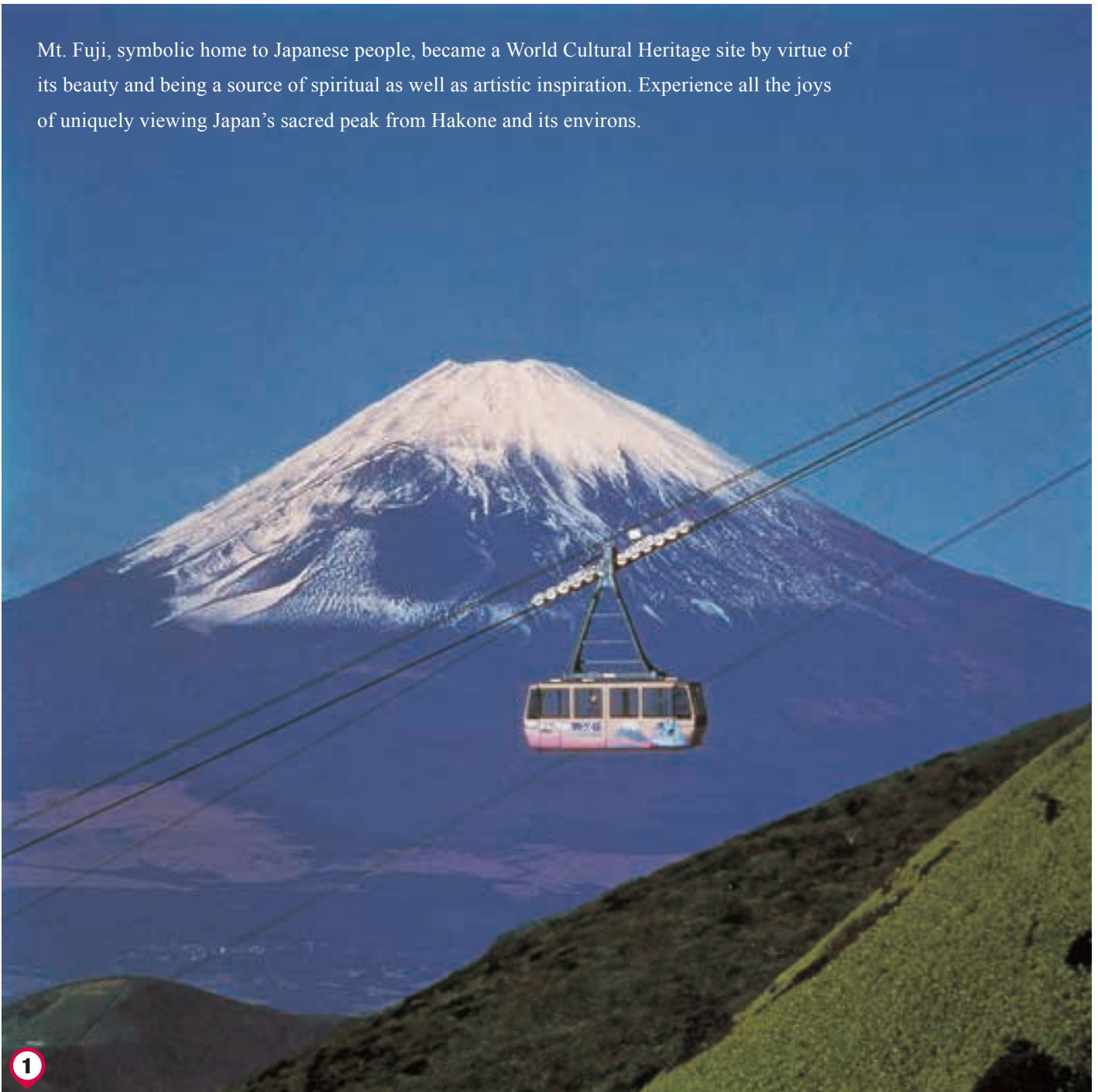
### Café Dining LuDERA

178-4, Sengokuhara, Hakone-machi,  
Ashigarashimo-gun, Kanagawa  
TEL. 0460-83-8373  
9:00-15:30 (last order)  
Closed Tue. & Wed. (holidays excluded)  
<https://hakone-ludera.com/>



# Breathtaking Views of Mt. Fuji

Mt. Fuji, symbolic home to Japanese people, became a World Cultural Heritage site by virtue of its beauty and being a source of spiritual as well as artistic inspiration. Experience all the joys of uniquely viewing Japan's sacred peak from Hakone and its environs.



1

from Mt.Komagatake



2

from Hakone Ashinoko Narukawa Art Museum



3

from Jukkoku Toge





from Mishima Skywalk



from Owakudani



from Konohananoyu





## Sengokuhara Pampas Grass Fields

仙石原スキ草原

Experience the sensual feel of pampas grass fields at the foot of Mt. Daigatake, renowned for showing Hakone autumn at its best. These golden fields, swaying as one in the fall breeze, are wonderful to see and touch.



## Owakudani 大涌谷

Created roughly 3 millennia ago by steam explosions, "Great Boiling Valley" is an active volcanic zone sourcing Hakone hot springs and a hot tourist spot for Mt. Fuji views. Feel the volcanic power amid natural beauty.



## Moto-Hakone, Hakone-Machi

元箱根・箱根町

### Hakone Shrine

箱根神社

Established amid the Nara period, this shrine was dedicated to all the local gods of Kanto and now is known for obtaining fortune, protection against evil, wish fulfillment, and safe road travel.



### Hakone Sekisho

(Check-point)

箱根関所

Feel the past come alive at this historic checkpoint for foot and vehicle traffic along the Tokaido Road, linking Edo (now Tokyo) and Kyoto in the Edo period. Inspection and tax collection were held in the Edo-style building.



## Sengokuhara

仙石原

## Miyanoshita, Gora

宮ノ下・強羅

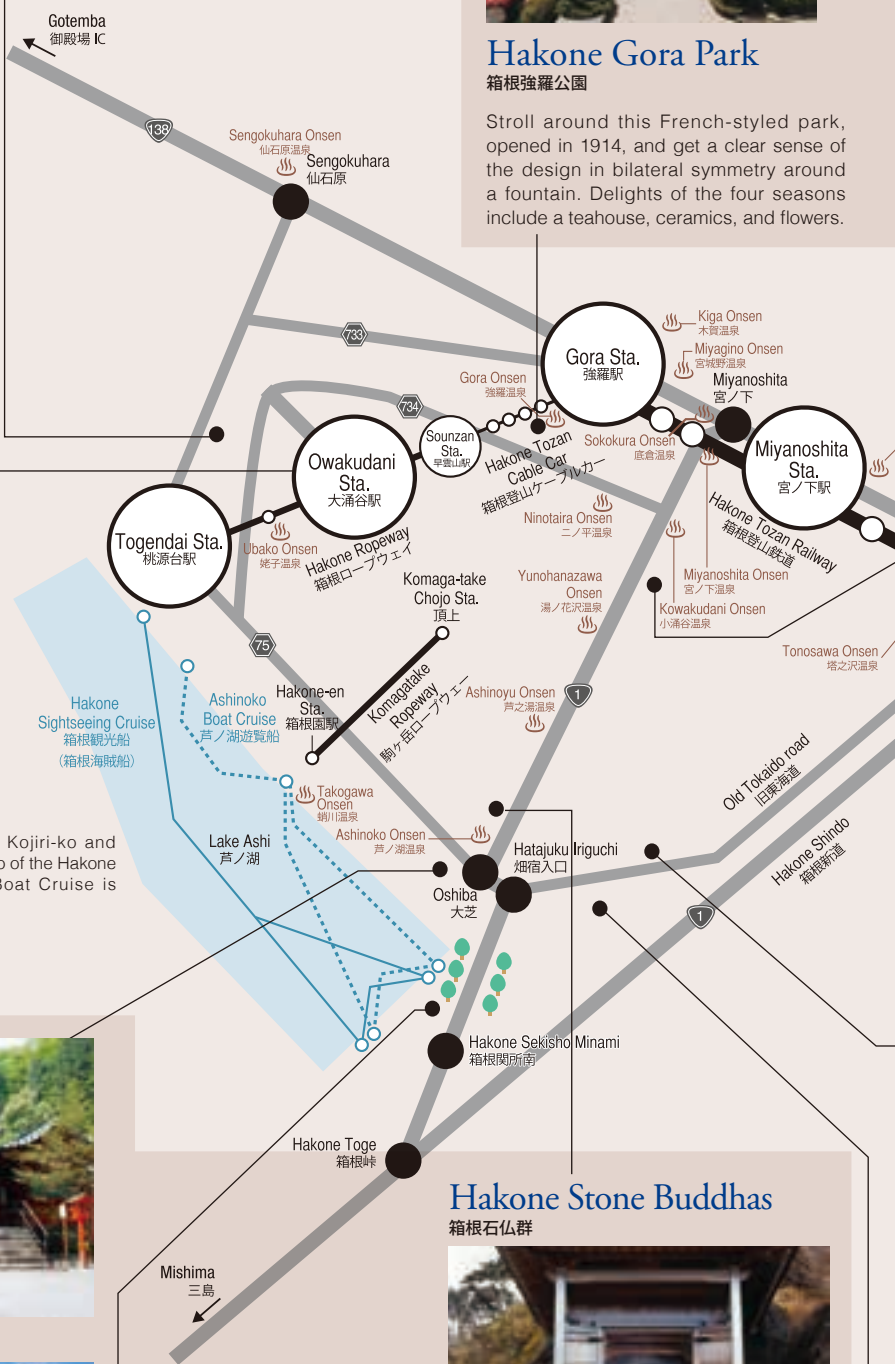
# Must



## Hakone Gora Park

箱根強羅公園

Stroll around this French-styled park, opened in 1914, and get a clear sense of the design in bilateral symmetry around a fountain. Delights of the four seasons include a teahouse, ceramics, and flowers.



## Hakone Stone Buddhas

箱根石仏群



Surrounding Shojin Pond is a stately gathering of Buddha sculptures and stone monuments going back 7 centuries. Among these sacred figures sits the contemplative Rokudo-jizo, carved out of rock and said to be Kanto's largest Buddha figure.



# See in Hakone



## Chisuji falls

千条の滝

Note how this waterfall, 3 meters high and 25 meters wide, flows quietly and hangs like a reed screen over moss-covered rocks in the upper reaches of Jakotsu River. Enjoy seasonal changes like summer's glowing fireflies and autumn's fiery leaves.



## Odawara Castle

小田原城

No trip to Odawara will be complete without visiting this castle built by Omori Yoriharu, regional lord of Nishi-sagami during the Muromachi period (1337–1573). The Hojo Clan, entombed at Soun-ji, succeeded him in ruling from this historic fortress, said to have been the largest in Japan during the Warring States period.



## Hotoku Ninomiya Shrine

報徳二宮神社

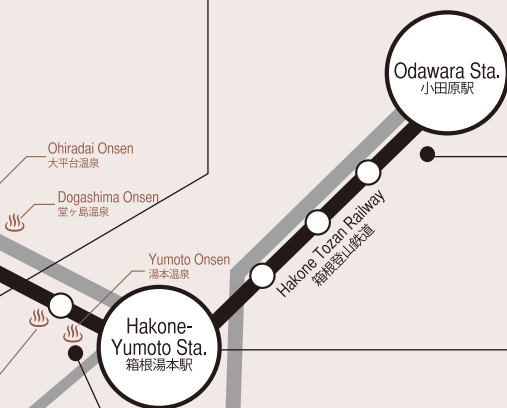
Established in 1894, next to Odawara Castle, the shrine has since been famous for the divine figure of Ninomiya Sontoku, well-known agriculturalist and philosopher.



## Odawara Fishing port

小田原漁港

In addition to offering soothing sounds of harbor waters, this port serves up a rich sea harvest including horse mackerel and sardine. And being seaside, naturally the harbor has plenty of places to dine on the freshest seafood, possibly lunching on a catch hauled from the ocean by fishermen at dawn.



## Hakone Old Tokaido Road

箱根旧街道



## Amasake Chaya

甘酒茶屋

Historic teahouse open for business early in the Edo period sits perched on the Hakone stretch of the Tokaido Road, a portion legendary for being the most perilous on the old highway. Don't miss the tangy taste of sweet sake, yet another minor legend dating back to the start of the teahouse as well as naming it.

## Hakone-Yumoto

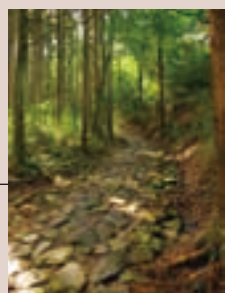
箱根湯本



## Hakone-Yumoto

箱根湯本

Arguably the most vibrant and lively hot spring district in all Hakone, Yumoto will soon convince you of its superior features, like hot springs for day trips, firmly established inns offering traditional hospitality, and streets around the station chock-a-block with restaurants and souvenirs shops.



## Ishidatami

石畳

This stone-paved road was built at the beginning of the Edo period to make travel smooth and easy for royals as well as commoners. Present-day travelers can sense the passage of time as they look out on scenery as beautiful and captivating as it was for Edo pilgrims, priest, poets and others.



## Yumoto-Kenban

湯本見番

Though it may be hard to believe geisha are not born but made, the daily training here of Yumoto geisha includes dancing, singing, reciting poetry, gracefully pouring drinks without spilling a drop, and more. In addition, seasonal events are held to demonstrate their accomplishments.

# Let's Enjoy Hakone's Various Rides!

Whether cruising through the sky, crossing a lake, ascending or descending mountain trails on wheels or ropeway, Hakone boasts exciting ways to go and a chance to experience magnificent nature.



## Hakone Tozan Cable Car

Travels at approximately 1.2km to connect Gora and Sounzan stations in 10 minutes.

## Hakone Tozan Railway

Travel from Odawara to Gora stations while enjoying surrounding wilderness and breathtaking views from railroad bridges. Also check out Allegra, the new railcar model.

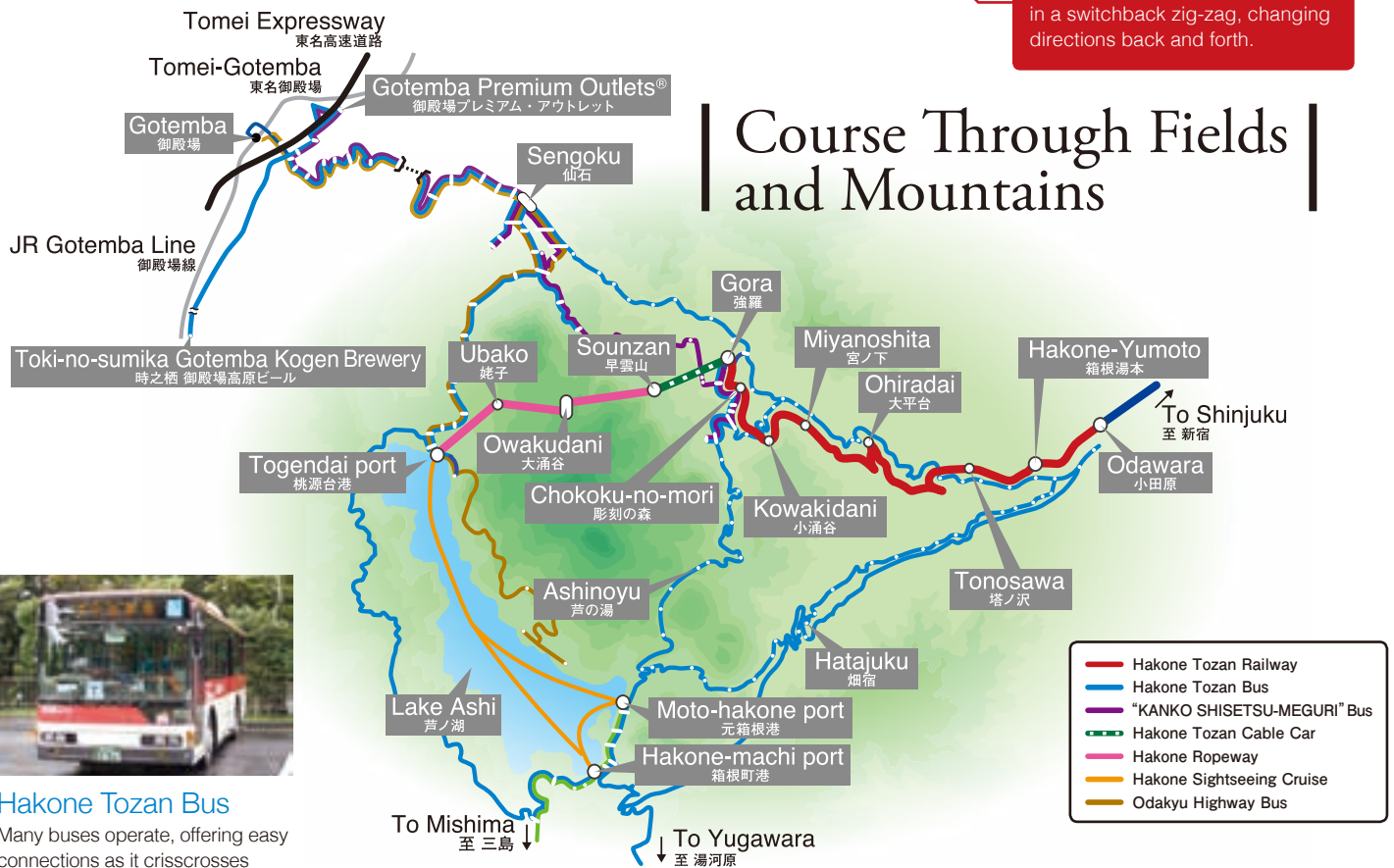


### ● Steepest pitch in Japan

Between Hakone-Yumoto and Kowakidani stations is an 80/1000 gradient, the steepest in Japan for an adhesion railway.

### ● Switchback

The railcar climbs the steep incline in a switchback zig-zag, changing directions back and forth.



## Hakone Tozan Bus

Many buses operate, offering easy connections as it crisscrosses Hakone's fascinating mountain roads.

## Hakone Ropeway

Enjoy the views during a 30-minute ride across four kilometers between Sounzan and Togendai stations, including the amazing Owakudani volcanic valley, Lake Ashi, and magnificent Mt. Fuji.



## Hakone Sightseeing Cruise

operates between Hakone-machi, Moto-Hakone and Togendai on Lake Ashi. Enjoy the excellent Hakone skyline and a panoramic view of Mt. Fuji.



## Odakyu Highway Bus

Offers direct transit from Shinjuku, Tokyo, Haneda Airport and Yokohama to Hakone and Gotemba.



## "KANKO SHISETSU-MEGURI" Bus

(Tourist Attraction Sightseeing Bus/ Hakone Tozan Bus)

This comfy way to go sports a fancy, retro-looking design as it circles tour locations like museums, with skylight windows for breathtaking views of sky and trees.





# Hakone Freepass



Hakone Freepass gives you unlimited rides on 8 transportation networks and discounts at affiliated facilities in the Hakone area with just one ticket!

## Round-trip Ticket

A discounted round-trip on the Odakyu Lines



Unlimited rides on 8 transportation networks in Hakone



Locations perks and discounts

## Fares

	2 Days		3 Days	
	Adults	Children	Adults	Children
From Shinjuku	6,100 yen	1,100 yen	6,500 yen	1,350 yen

Buy online



Travel faster and easier with your smartphone

Make your trip  
more  
enjoyable!

# History of Hakone, Odawara

In Hakone, the Hakone volcano has produced caldera and onsen (hot springs) over many long years. It is an area overflowing with mystery and history, where countless legends and the vestiges of many great people still live on.

## <Nara Period to the Warring States Period>

Hot springs were opened in the Nara period (around 700AD). The hot springs were related to the Late Hojo Clan of the Warring States period.

According to one theory, the hot springs of Hakone were first opened in the Nara period (around 700AD). According to folklore of the time, "When 'Kiyosada', a priest of Kaga and disciple of Taicho, came to Hakone-Yumoto to pray and study, the hot springs began to flow, and the small pox which had been afflicting the people was cured". During the Warring States period (from around 1495 AD onwards), the Late Hojo Clan ruled as daimyos over the whole Kanto region for five generations from their base in Odawara Castle. Odawara prospered as a center of politics, economy and industry. Soun Hojo, the founder of the clan, was enshrined in 'Soun-ji' in Hakone-Yumoto, so military commanders would often visit Hakone to pay homage. The source of the springs near Soun-ji that the military commanders bathed in still remains, and the hot water there still continues to flow.



Odawara Castle was the ruling castle for five generations of the Late Hojo Clan from around 1496 onwards. It is now a castle ruins park, where beautiful views can be seen from the castle towers.

A statue of Soun Hojo at the west entrance of Odawara Station.



## <Warring States Period to Edo Period>

A place of healing for troops during Hideyoshi Toyotomi's attack on Odawara (1590). Its name come to back be known nationwide.

The 'Battle of Odawara' (1590) was daimyo Hideyoshi Toyotomi's final battle in his unification of the country. Hideyoshi spent two months fortifying Ishigakiyama in order to capture Odawara Castle. It is said that during the protracted war, Hideyoshi built a stone bathtub that utilized the hot springs of Jakotsu river in Miyanoshita, and used it to heal his soldier's wounds, as well as bathing in it himself.

In addition, at the height of the war, Hideyoshi held a tea ceremony and SEN no Rikyu, Ieyasu Tokugawa, Masamune Date, and Yodogimi all visited, allowing the area to prosper. It is said that Hime-no-mizu, a famous mineral water from Ohiradai, was used by Hideyoshi Toyotomi for the tea ceremony, and that the daughters of the Late Hojo Clan and the Toyotomi Clan used it as a face lotion. From then on, many women visited Hakone in order to follow their example.



The 'Taiko Stone Bathtub' in the Miyanoshita hot spring. This is the remains of the open-air bathtub created by Hideyoshi to heal his troops, and is no longer used for bathing.

## <Edo Period to Meiji and Taisho Periods>

Transportation networks arranged by Ieyasu Tokugawa and Yukichi Fukuzawa, and the development of popular tourist attractions.

In 1603, Ieyasu Tokugawa, who set up the Edo shogunate, began work on the Tokaido highway. A hot spring health resort was born in Hakone, and it became famous for the '7 Hakone Hot Springs'. However, the inaccessibility of the hilly roads became known as the most perilous part of the Tokaido, and then in 1626 the shogunate established the 'Hakone Checkpoint' in order to secure defence of Edo.

From the Meiji period onwards, the 'Hakone Checkpoint' was abolished, and development of the area progressed as a location for recuperation and sight-seeing. Yukichi Fukuzawa enjoyed visiting the hot springs of Hakone, and after talking to local sympathizers, he assisted with the development of National Route 1 linking Odawara and Hakone. In 1877, Fujiya Hotel was opened as a hotel aimed at overseas visitors. Railroads were also established thanks to Odakyu Electric Railway, and the area developed as a popular, accessible tourist location.



The main role of the Hakone Checkpoint was checking for "letting in guns and letting out women". They particularly kept out a watchful eye for carried weapons, and wives of daimyos fleeing from Edo where they had been forced to live and held hostage.





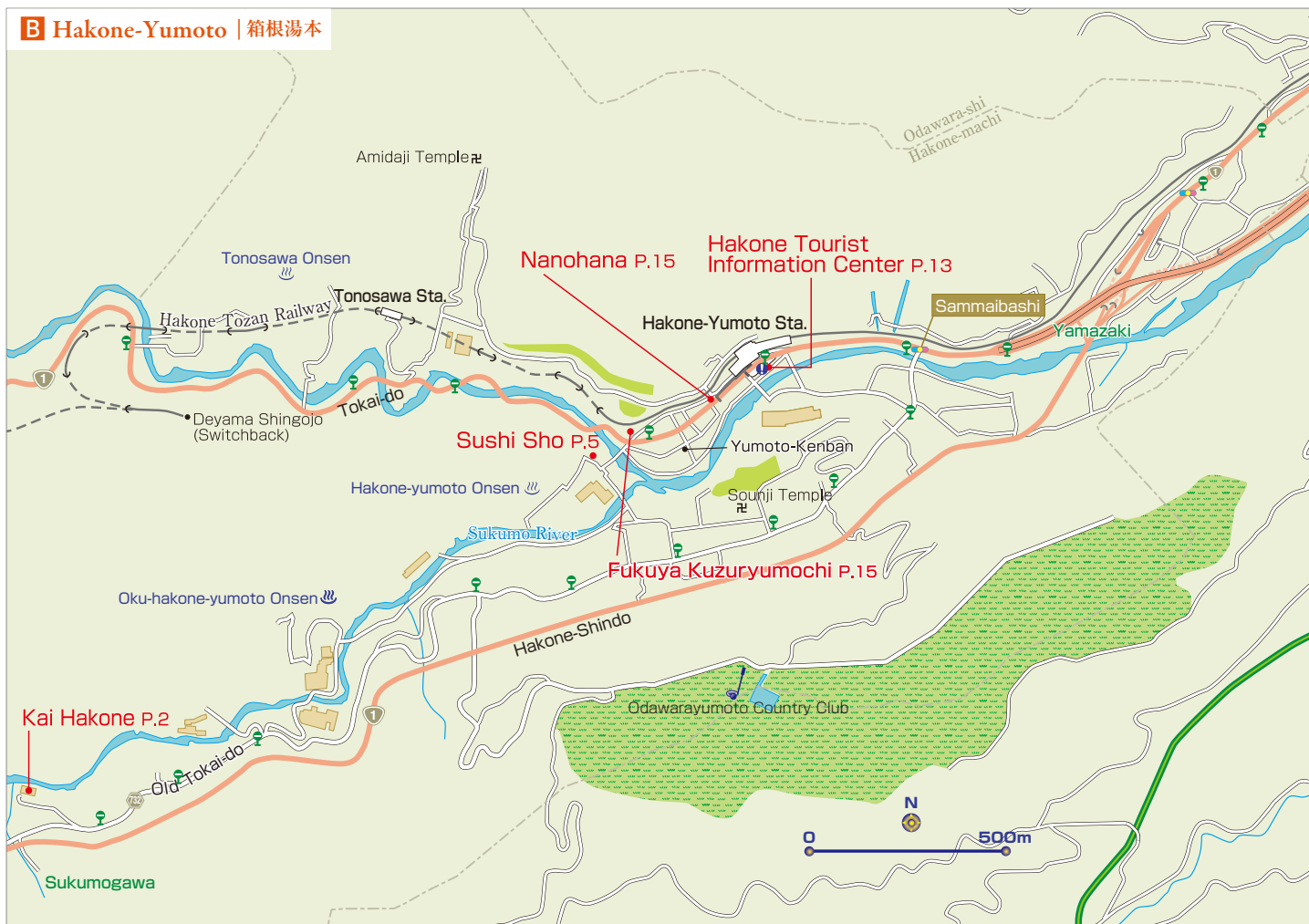
## Hakone Tourist Information Center

Obtain here the latest information of the whole Hakone area, such as sample trip plans and the best spots of the season. English-speaking staffers are available to help plan your trip around Hakone.

Hakone Tourist Information Center

Open hours 9:00~17:45 (open every day)

TEL 0460-85-5700



## Savor Japanese Cuisine of Local Ingredients In a Historic Setting

Reflect on the history and culture of the Sengoku period (15th to 16th centuries) at Odawara Castle as you head to our 128-year-old Japanese restaurant. Sushi, tempura, and sashimi are prepared by professional chefs using seafood fresh from a nearby market every morning. Savor this locally derived, tasty Japanese cuisine to your heart's content while relaxing in a traditional building built over 90 years ago. Be sure to let us know any of your dietary restrictions.

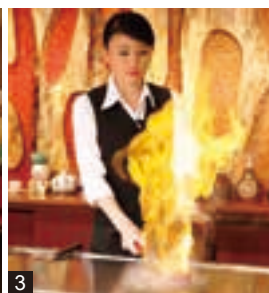
- 1 Our Kodawari Tenju set is a limited menu choice (¥3,630). Sashimi in a ship-shaped container is also available.
- 2 The historic and dignified *karahafu irimoya-zukuri* building (bow-shaped gable eaves and hipped roof) has been designated as National Important Cultural Property.
- 3 Fuji no Ma is a spacious room with a high ceiling for your dining pleasure.

### Daruma Ryoriten

国指定登録有形文化財 のれんと味  
だるま料理店

☎ 0465-22-4128  P13-A

- 2-1-30 Honcho, Odawara-shi, Kanagawa
- 11:00-20:00 (last order)
- Open daily
- 8-minute walk from Odawara Station (JR, Odakyu)



- 1 Kanagawa brand beef and A5-ranked beef are used luxuriously.
- 2 Celebrate your anniversary with loved ones surrounded by elegant antiques and interiors.
- 3 Chef's grilling technique is lively and entertaining.

## Prime Beef: Delectable, Distinctive Kuroge Wagyu

At Steakhouse Kanai, in front of Odawara Station, savor our Soshu Wagyu, Kanagawa Prefecture's brand beef, cooked by a professional with outstanding heating technique. We're devoted to local production for local consumption of select ingredients: vegetables and fruits grown without pesticides; fish delivered fresh from Odawara and Hayakawa ports. This perfectly relaxing space for a special trip is not only attractive but offers an anniversary dessert plate for wonderful memories.

### Steakhouse Kanai Odawara Eki-mae Shop

ステーキハウス金井 小田原駅前店

☎ 0465-22-5951

 P13-A

- Green Bldg. 3F, 2-1-29 Sakaecho, Odawara-shi, Kanagawa
- 11:00-15:00; 17:00-21:30 (last order, 21:00),
- Tue.-Thu. & Sun.; 17:00-23:00 (last order, 22:30), Fri. & Sat.
- A minute's walk from Odawara Station (JR & Odakyu lines)







1



2

1 Popular *onsen manju* Hakone no Otsukisama, 8-piece set, ¥1,000  
2 *Manju* just-made by saturated steam are sold at our storefront.

## Onsen Manju of Established Confectioner

Founded in 1905, Nanohana sells just-steamed *onsen manju*, sweet buns sold at hot springs. Inside a thin skin made with Okinawa black sugar is smooth sweet bean-paste seasoned with sea salt. Savor one of Hakone's famous confections as you stroll at ease through our hot-spring resort town.

### Manju-ya Nanohana

まんじゅう屋 菜の花

☎ 0460-85-7737 MAP P13-B

■ 705 Yumoto, Hakone-machi, Ashigarashimo-gun, Kanagawa  
■ 9:00-17:00 ■ Open daily  
■ 1-minute walk from Hakone-Yumoto Station (Hakone Tozan Railway)



1



2

1 Mouth Melting Mont Blanc Soft (¥1,200) is made with chestnuts from local Ashigara and Kumamoto Prefecture.  
2 Enjoy Gokurou-san (¥1,000, 8-piece pack) after hot-spring bathing.

## Hakone's Popular Sweets

Mouth Melting Mont Blanc Soft, popular when you take a break from walking, has lots of soft ice cream and Japanese chestnut cream on top of a crispy meringue base. Our black *manju* "Gokurou-san" is made with bamboo charcoal powder kneaded into the dough. The sweet sesame paste taste will captivate you completely!

### Fukuya Kuzuryumochi

福久や 九頭龍餅

☎ 0460-85-8818 MAP P13-B

■ 729 Yumoto, Hakone-machi, Ashigarashimo-gun, Kanagawa  
■ 9:00-17:00 ■ Open daily  
■ 3-minute walk from Hakone-Yumoto Station (Hakone Tozan Railway)



## Point 1

# Japanese Customs for Rooms and Meals

Please take particular care for characteristic Japanese culture and customs when eating meals or staying at *ryokan* (Japanese-style inns) which have a traditional Japanese atmosphere.



### 1 It is standard to remove your shoes in the entry hall before entering a room.

In the front entryway take off your shoes while facing forwards and then enter the room. You should then bend down and turn your shoes to face the other way, aligning them neatly.



### 2 Bowls should be held in your hand when eating.

The bowl containing your rice as well as your soup bowl and other bowls should all be held in your hand while eating from them. Don't squeeze the chopsticks too strongly, hold them vertically, cross them over, or stab your food with them.



### 3 Try wearing your yukata around the ryokan.

A yukata is a traditional type of Japanese clothing, often worn after bathing or while sleeping. Be sure to cover your body first with the right-hand side, then left-hand side. When staying at a ryokan, you're welcome to wander around in yukata.

## Simple Facts about Japanese-Style Rooms and Tatami Mats

■ A Japanese-style room is one laid with tatami mats. One appealing feature is the rooms may be used for many purposes, such as a living room, bedroom, or guest room. A single tatami mat is roughly 180 cm x 90 cm, and is counted as 1 'jo' (a specific Japanese counter for tatami mats).  
■ Tatami mats provide Japan-style flooring. The face of tatami mats is woven grass, meaning they are highly absorbent, warm in winter, and cool in summer. Their fragrance also has a relaxing effect.



## “A most exclusive Japanese retreat”

A stay in Gôra Kadan, the former retreat of the Imperial Family, Kanin-no-miya, situated in the heart of Hakone National Park, is an invitation to bring your five senses to life by immersing yourself in the ancient Japanese way of life.



The rooms have been designed in a minimalist style, and the hotel's facilities include a swimming pool, a spa, and a beauty salon.



ALL AROUND THE WORLD, UNIQUE IN THE WORLD *Our 500 restaurants & hotels offer the finest experiences all over the world.*

Hotel

 **GÔRA KADAN**

Room charge half board (dinner & breakfast) per person, per night.  
All prices including tax and service charge.

Tel. +81(0)460-82-3331

✉ reservation@gorakadan.com

Restaurant

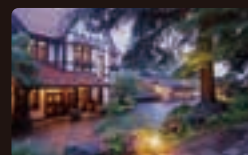
**Kaiseki KADAN** 

located inside the luxurious inn GÔRA KADAN

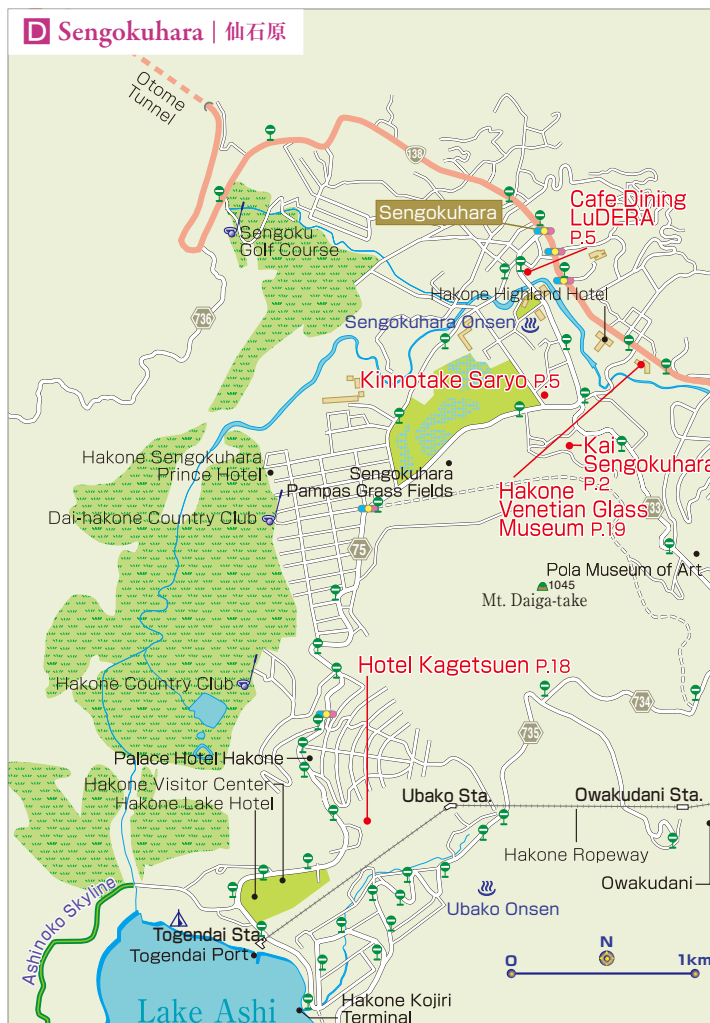
Restaurant of the Kaiseki cuisine

Tel. +81(0)460-82-3333

✉ kadan@gorakadan.com







## Harmony of Sculpture and Nature

Opened in 1969, the Hakone Open-Air Museum is the first open-air museum in Japan. Located in the mountains of Hakone, it spreads over 70,000 square meters and offers beautiful views of the surrounding mountains. Surrounded by nature, this art museum is perfect for taking a leisurely stroll while appreciating art.

**THE HAKONE OPEN-AIR MUSEUM**  
彫刻の森美術館 0460-82-1161 MAP P17-C

\*1121 Ninotaira, Hakone-machi, Ashigarashimo-gun, Kanagawa \*9:00-17:00 (Last admission: 16:30) \*365 days/year \*Adults: 1,600 yen University and high school students: 1,200 yen Middle and elementary school students: 800 yen \*Hakone Tozan Railway to Chokoku-no-Mori Station, from which it is a 2-minute walk to the museum \*<http://www.hakone-oam.or.jp>

\*Between Kojiri-ko and Hakoneen-ko of the Hakone Ashinoko Boat Cruise is closed.



1 The museum's classic Japanese garden, a Registered Monument of Japan, has one of the country's finest and most diverse moss gardens.  
2 Savor *matcha* tea with seasonal sweets in a garden-viewing teahouse.

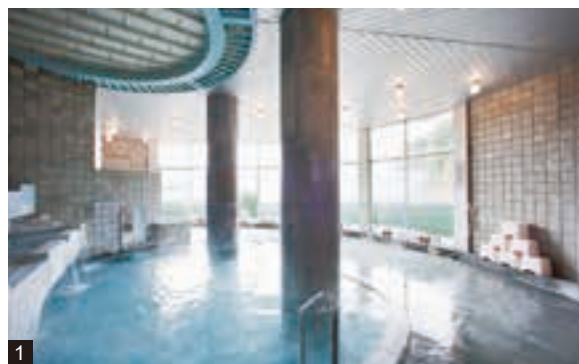
## Experience the Beauty of Japan

Aesthetic pleasures await you in Hakone's oldest art museum. Stroll a Japanese garden after viewing *tsubo* jars from the Kamakura and Muromachi periods (12th-14th centuries) and pottery from the Momoyama period (16th-17th centuries). Or relax from a seated garden view in a teahouse serving *matcha* tea with seasonal sweets. Bring this issue and enjoy entry-fee discounts for adults (¥100) and for students (¥50).

 **Hakone Museum of Art**  
箱根美術館

☎ 0460-82-2623 MAP P17-C

■ 1300 Gora, Hakone-machi, Ashigarashimo-gun, Kanagawa ■ Apr.-Nov.: 9:30-16:30 / Dec.-Mar.: 9:30-16:00 (last admission 30 mins. before closing) ■ Closed Thur. (open if a holiday / Nov.: open daily) ■ Entry fees: adults, ¥900; high school and university students, ¥400; junior high school students and younger, free ※Fees to be revised on Sept. 8, 2023 ■ A minute's walk from Koenkami Station (Hakone Tozan Cable Car)



1 2 days/1 night with meals from ¥13,350 per person. Day trip including bathing fees (11:00-15:00): Adults ¥1,000, Children ¥700  
2 From the deluxe suite you can have a superb view of the Hakone mountain range to yourself.

## Inn with Superb View of Mt. Fuji

Our guest rooms have large windows: on the garden side, they look out over Mt. Fuji and the Hakone mountain range; on the mountain side, they look out over vibrant green trees. We have two types of hot springs, simple and sulfur. In addition to a large bathhouse for our simple hot spring, there are four free sulfur-spring baths that you can reserve. For dinner, try our Japanese-and-Western dinner tray to savor both cuisines.

 **Hotel Kagetsuen**  
ホテル花月園

☎ 0460-84-8621 MAP P17-D

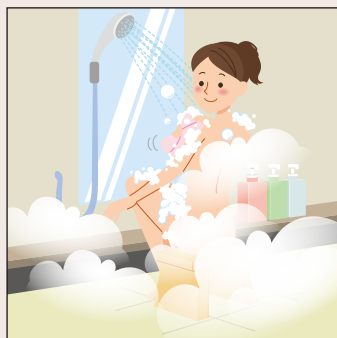
■ 1244-2 Sengokuhara, Hakone-machi, Ashigarashimo-gun, Kanagawa  
■ 40 minutes by bus from Hakone-Yumoto Station (Hakone Tozan Railway)



### Point 2

## Pointers on Bathing Etiquette

These are places to relax and heal your mind and body, so enjoy your time calmly and refrain from any public pool-type antics.



### 1 Wash before entering the bath!

Wash face and body, then rinse off all soap before entering the tub. Enter naked, without wearing a towel, and enjoy soaking—only soaking.



### 3 Dry off after bath and before entering dressing room

Dry off with a towel in the bathing area, before entering the dressing room, to prevent the dressing room floor getting wet.



### 2 No towels in the tub

Enter the bath slowly, to avoid splashing. As a matter of public hygiene, don't put or let your towel into the water and, in general, follow common-sense manners as well as these etiquette pointers.

### Onsen FAQs

- Onsen water can be quite dense and the heat intense, so avoid getting dizzy by limiting your time: don't soak too long (no more than 15 minutes). Immerse yourself up to neck or waist, no deeper, and be sure to hydrate before and after a bath.
- Bath water may have some "floaties" that are natural mineral components, not trash or filthy bits, so don't worry if something tiny comes your way.





Restaurant



Shop



Hotel



Museum



1



2

1 The garden overlooking Owakudani is famous.  
2 Enjoy dining in our cafe-restaurant.

## Let your heart escape to the Venice of old

This is the only museum in Japan where you can see a complete presentation of Venetian glass. Our extensive collection showcases not only Venetian glass that charmed European royals and nobles from the 15th to the 19th century, but also innovative creations by contemporary artists active after the 20th century. The elegance and beautiful brilliance of this glass art will carve a lasting impression in your mind.



### Hakone Venetian Glass Museum

箱根ガラスの森美術館

☎ 0460-86-3111 MAP-P17-D

■ 940-48 Sengokuhara, Hakone-machi, Ashigarashimo-gun, Kanagawa ■ 10:00-17:30 (last admission: 17:00) ■ Admission fees: adults, ¥1,800; high school and university students, ¥1,300; primary and junior high students, ¥600. ■ 25-minute bus ride from Hakone-Yumoto Station (Hakone Tozan Railway)



1

2

1 An array of Mt. Fuji goods: towels, stationary, small articles, etc.

2 Choose among stylish works of Hakone's traditional marquetry craft (yosegi-zaiku).

## Peak Goods of Mt. Fuji

In the museum shop of Ashinoko Terrace, beside Lake Ashi, you'll find the perfect souvenirs of your trip to Hakone and Japan. Among these gems is a rich array of Mt. Fuji-themed goods, thus the perfect place to find that memorable travel item.



### Ashinoko Terrace Tamamura Toyoo Life Art Museum

芦ノ湖テラス 玉村豊男ライフアートミュージアム

☎ 0460-83-1071 MAP-P17-E

■ 61 Moto-Hakone, Hakone-machi, Ashigarashimo-gun, Kanagawa  
■ 10:30-17:00, Mon.-Fri.; 9:00-17:00, Sat./Sun./holidays ■ Open daily



## Point 3

# Simple Japanese

## Greeting and Daily Conversation

Good Morning	ohayo(gozaimasu) おはよう(ごさいます)
Hello	konnichiwa こんにちは
Good evening	konbanwa こんばんは
Goodbye	sayonara さようなら
Thank you	arigato(gozaimasu) ありがとう(ごさいます)
Excuse me	sumimasen すみません
I'm sorry	gomennasai ごめんなさい
It's delicious	oishi おいしい

## Sightseeing

Where is the ○○?	○○ wa doko desu ka? ○○ はどこですか?
I want to go to ○○.	○○ ni ikitai desu ○○ に行きたいです
How long will it take?	Jikan wa dore gurai kakarimasu ka? 時間はどれぐらいかかりますか?
How much is it?	Ikura desu ka? いくらですか?
What do you recommend?	Osusume wa nani desu ka? おすすめは何ですか?
What is this?	Kore wa nani desu ka? これは何ですか?
I'll have this, please.	Kore o kudasai これをください
Could you please take my/our picture.	Shashin o totte kudasai 写真を撮ってください



\*Menus will change seasonally. (The photo is for illustrative purposes only.)

## Enjoy gourmet dining at Hôtel de Yama

Hôtel de Yama by Lake Ashinoko in Hakone is a resort with a history of over 70 years. Enjoy either French or Japanese haute cuisine amidst beautiful scenery.



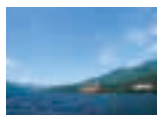
### French Restaurant Vert Bois

■ Opening hours: 11:30 a.m. - 1:30 p.m.  
Lunch course: From 3,500 yen



### Japanese Restaurant Tsutsuji-no-Chaya

■ Opening hours: 11:30 a.m. - 1:30 p.m.  
Lunch course: From 3,800 yen



Lakeside hotel with a spectacular view of Lake Ashinoko

#### Address

80 Moto-Hakone, Hakone-machi, Ashigarashimo-gun, Kanagawa 250-0522

For inquiries, please call  
0460-83-6321

Visit our website.  
www.hakone-hoteldeyama.jp/en

● From Odawara Station or Hakone-Yumoto Station, take the Hakone Tozan Bus bound for Hakone-machi or Moto-Hakone Port. Get off at Moto-Hakone Port and take the complimentary shuttle bus.  
● From Shinjuku Station West Entrance, take the Odakyu Hakone Highway Bus and get off at the last stop Hakone Odakyu Hôtel de Yama.  
● From Odawara-Atsugi Road, get off the Hakone Shindo at Ashinokodaikan IC, and the hotel is about ten minutes from there.

## Point 4

# Shrine and Temple Etiquette

Shrines are dedicated to Shinto gods, and temples to Buddhist figures such as bodhisattvas and various incarnations of Gautama. In both of these sacred places you should move and act calmly and speak quietly.

## 1 Bow slightly before entering a shrine's *torii* or a temple gate

The ground and space beyond a shrine's *torii* or a temple gate are considered sacred. Bow slightly before passing through *torii* or temple gate. As the center of the shrine walkway is the path of a sacred being, visitors should walk slightly to the right or left.



## 2 Rinse your hands and mouth at the *chozuya* (ritual ablution pavilion) to purify body and mind

After passing through shrine or temple entry, you'll find a small pavilion for rinsing hands and mouth to purify body and mind before stepping up to the sacred space occupied by shrine god or Buddhist deity.

Perform the ritual ablution in three simple steps: (1) wash hands with water; (2) scoop some water with both hands and bring it to your mouth to cleanse; (3) clean both hands with water.

## 3 Placing money into offertory box

These days, coins or bills are used as an offering to deities. In the past, these were made in the form of rice. There is no set amount to offer, so you should decide how much to give according to your wish or prayer, purification ritual, gratitude, or other matter. When tossing money between the bars of the offertory box, don't throw your offering roughly, but gently and politely.



## 4 Shrine salutation: bow twice, clap twice, and bow once to greet the deity

Bow deeply before a shrine's outer sanctuary and then make two bows, each at a 90-degree angle. Raise hands to chest center, Western-prayer style, and clap twice at a shrine but not at a temple. Return hands to chest center and pray. Lower hands to sides and bow once, at a 90-degree angle. Bow again, deeply, and step back.

## 5 Shrine and temple option: amulet or fortune-telling slip

After worshipping, many visitors receive amulets at the *fudasho* (amulet-issuing office) and draw fortune-telling slips. An amulet is worn to receive divine protection; a fortune-telling slip enables you to learn your fortune, good or bad. You also have the choice, according to custom, to tie the slip on a slip rack on temple or shrine grounds, or you can take it home. There are also goshuin (red-ink stamps) and ema (votive horse tablets) as sacred objects.



### Distinguishing points of a temple

- Temples usually do not have *torii* but a formal structure of wood, often two stories high, as their gate. Bow slightly before passing through the overhead structure.
- When making offerings or praying at a temple, do not clap the hands. Bow deeply and then bring hands together, chest center (Western-prayer style), as you make your pronouncement.

(with thanks to Hakone Shrine)



Stay, Eat, Buy, Day, Trip Hot Springs



## Premium Hakone Trip on your smartphone



# MiSMO Hakone net

mismo-hakone.jp



### MiSMO HAKONE ENGLISH vol.15

#### Staff

##### Publisher

Nakamura Kazuhiro  
中村 和広

##### Editor in Chief

Maki Yoshiko  
牧 淑子

##### Deputy Editor in Chief

Aihara Kayoko  
相原佳代子

##### Sales&Promotion Staff

Yonenaga Yoko  
米永 洋子

Sonooka Shinobu

園岡 忍  
Koyama Daisuke  
児山 大輔

##### Editor

Makino Sachi  
牧野 祥

##### Designer

Ushiro Nana  
後 奈那  
Ono Chieko  
小野千恵子  
Bravo Graphics  
ブラボーグラフィックス

##### Map Design

Kobayashi Shigeo  
小林 重子

##### DTP Staff

Shirasawa Junna  
白澤 淳奈

##### Special Thanks

McDAVIS ASSOCIATES, INC.  
マック・デビリアソシエーツ

##### Cooperation 協力

Odakyu Electric Railway Co., Ltd.  
小田急電鉄株式会社

Odakyu Hakone Group

小田急箱根グループ

HAKONE TOWN

箱根町

HAKONE Convention Bureau

箱根コンベンションビューロー

Hakone Town Tourist Association

一般財団法人箱根町観光協会

Odawara City

小田原市

##### Issue 発行

iNCLUBE Co., Ltd.

株式会社インクルーブ

<https://mismo-hakone.jp>

本誌の広告に関するお問い合わせは  
株式会社インクルーブ

〒215-0021

神奈川県川崎市麻生区上麻生1-5-1

リソナ新百合ヶ丘ビル5F

営業企画部 ☎044-959-3750

##### Printing and bookbinding 印刷・製本

SANKEI SOGO PRINTING Corporation  
サンケイ総合印刷株式会社



## 箱根・小田原







Minamiashigara-shi

Kanagawa Pref.

Odawara-shi

Hakone-machi

Yugawara-machi

Manazuru-machi

Atami-shi

- A** Odawara 小田原
- B** Hakone-Yumoto 箱根湯本
- C** Miyanoshita / Kowakidani / Gora  
宮ノ下・小涌谷・強羅
- D** Sengokuhara 仙石原
- E** Ashinoko (Lake Ashi) 芦ノ湖

0 1 2 3 4 5km





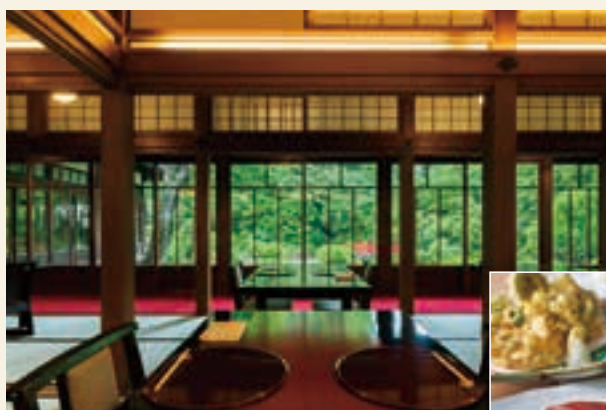
富士屋ホテル FUJIYA HOTEL



## A classic hotel befitting a new era

Fujiya Hotel was established in 1878 in Miyanoshita, Hakone. More than 140 years later, after a major renovation in 2020, the hotel continues to welcome many guests.

We provide a highly comfortable and relaxing time for our guests, while preserving the atmosphere and design of the past and the spirit of hospitality.



## Enjoy seasonal Japanese cuisine in a historic Japanese building

KIKKA-SO is a Japanese building constructed in 1893 as Miyanoshita Imperial Villa.

Please enjoy Japanese cuisine prepared with seasonal ingredients in a calm and relaxed atmosphere.

Breakfast/Lunch/Dinner Dress code: smart casual



## A Relaxing Stay in the Embrace of Hakone's Great Nature

At Fujiya Hotel, the source of the Miyanoshita Onsen hot spring is drawn into the bathrooms of all guestrooms (120 rooms). We offer a variety of facilities to enrich our guests' stay, including Japanese, French, and Western restaurants, indoor and outdoor swimming pools, gardens, and relaxation facilities.

We hope that you will enjoy a supreme experience that can only be had here.

TEL. 0460-82-2211

359 Miyanoshita, Hakone-machi, Ashigarashimo-gun, Kanagawa,  
250-0404, Japan

<https://fhr.fujiyahotel.jp/>

