

JAPAN

HAKONE



2026
Winter/
Spring

vol.20

FREE

English
英語版

HAKONE / ODAWARA / Mt. FUJI VISITOR'S GUIDE



Detailed
MAP
Included

Mt. Fuji and Lake Ashi

- Hakone's Various Rides
- Breathtaking Views of Mt. Fuji

- Area Maps & Main Spots
- Japanese Culture and Etiquette

Mi-s-mo
【ミスモ*はこね】

Note : Pages with company names indicate promotional content.

MISHIMA SKYWALK



Breathtaking Views and Refreshing Escape. A Suspension bridge with a view of Mt.Fuji, the highest mountain in Japan.
After enjoying the view on an aerial walk, experience exciting activities in the great outdoors. You can enjoy Japanese food inside the facility.



VIEW OF MT.FUJI



The best shot of Mt.Fuji.



ACTIVITIES



LONG ZIP LINE



FOOD



Juicy Hamburg Steak



Ramen

Local Japanese food.

Access

Check the nearest public transport. >



Local Bus (Tokai Bus)		—————
Local Bus (Izuhakone Bus)		—————
Local Bus (Hakone Tozan Bus)		—————
Hakone Tozan Railway		—————
JR Shinkansen bullet train		—————
Hakone Ropeway	
Hakone Sightseeing Cruise		~~~~~

SPECIAL COUPON

Suspension bridge admission

100 Yen off

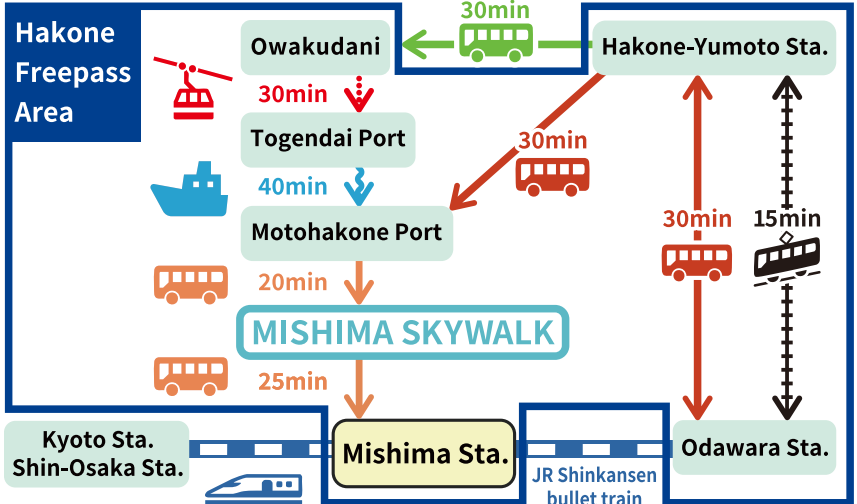
 (Only for adults)

Please show this at the ticket counter to receive a 100 Yen discount on the admission fee for the day.

Valid until July 31, 2026

Hakone Freepass

Travel Hakone easily and affordably with this transport ticket
Unlimited Boarding!



MISHIMA SKYWALK

Website



English

Business hours
9:00~17:00

*Business days and hour may change due to events or weather.

Google Map



Contents



Information published in this magazine is as of December, 2025. There may be cases of prices having been changed since then, due to consumption tax rate revision and other reasons, so please check with the stores before use. And there are instances of consumption tax or bathing tax, other service fees applied separately. The overnight stay prices are a single person charge on weekday (Monday to Thursday and Sunday, excluding the day before a holiday) overnight stay with two meals, for a room by two persons unless otherwise stated.
※The details of what have been referred in this magazine could be changed or discontinued due to weather or other reasons. Please check with the organizer/facility/store before heading out.

Please note that the opening/business hours, charges, closed days, event opening periods and menu contents of facilities and stores published in this magazine are subject to change without notice.

Unauthorized reproduction/copying of photographs, illustrations, maps or articles in this magazine are strictly forbidden.

- 6 Getting to Hakone
- 7 Let's Enjoy Hakone's Various Rides!
- 10 Must See in Hakone
- 12 Breathtaking Views of Mt. Fuji
- 26 Hakone & Odawara Gourmet Foods & Good Goods
- 28 Fifty-Three Stations of the Tokaido

Area Attractions

- 8 Wide Area
- 30 Hakone / Odawara Map
Odawara, Hakone-Yumoto,
Miyanoshita / Kowakudani / Gora,
Sengokuhara, Lake Ashi

Culture and Etiquette

- 3 Simple Japanese
- 16 Discover the Meaning & Source of Hakone Yosegi Zaiku?
- 20 Pointers on Bathing Etiquette

Point 1

Simple Japanese

If you can learn some simple Japanese, it will be useful when trying to communicate.

Greeting and Daily Conversation

Yes / No	hai / iie はい いいえ
Good Morning	ohayo (gozaimasu) おはよう(ございます)
Hello	konnichiwa こんにちは
Good evening	konbanwa こんばんは
Good-bye	sayonara さようなら
Thank you	arigato (gozaimasu) ありがとう(ございます)
Excuse me	sumimasen すみません
I'm sorry	gomennasai ごめんなさい
It's delicious	oishi おいしい

Shopping and Eating

How much is it?	Ikura desu ka? いくらですか?
What do you recommend?	Osusume wa nani desu ka? おすすめは何ですか?
What is this?	Kore wa nani desu ka? これは何ですか?
Do you have ○○?	○○ wa arimasu ka? ○○はありますか?
I'll have this, please.	Kore o kudasai これをください
Can I pay using my creditcard?	Kurejitto Kādo de shiharai dekimasu ka? カードで支払いできますか?

Sightseeing

Where is the ○○?	○○ wa doko desu ka? どこですか?
I want to go to ○○.	○○ ni ikitai desu に行きたいです

How long will it take?	Jikan wa dore gurai kakarimasu ka? 時間はどれぐらいかかりますか?
Could you please take my/our picture.	Shashin o totte kudasai 写真を撮ってください
Can you speak English?	Eigo wa hanasemasu ka? 英語は話せますか?
I lost my ○○.	○○ o nakushimashita ○○を失くしました

Toilet.....	toire トイレ	Tourist office	kanko annaijo 観光案内所
Station	eki 駅	Hospital	byouin 病院
Bus Stop	basunoriba バス乗り場		



Breathtaking vistas of the Hakone mountain range and the expanse of Sagami bay

Experience the tranquility, grace and serenity of Japanese traditional aesthetics while spending exceptional time in the land of Gora. At Hakone Gora KARAKU, guests will find a haven to indulge themselves in moments of true relaxation. Our priority lies in crafting unique experience tailored to each guest, ensuring that our hospitality is personalized and impressive for each visit. We welcome our guests with our hospitality that conveys the beauty of the four seasons, and with a space that allows guests to spend their time as they wish.

HAKONE GORA KARAKU

Tel. +81 (0)460-83-8860 <https://www.gora-karaku.jp/>

1300-8 Gora Hakone-machi
Ashigarashimo-gun Kanagawa Pref. Japan



佳ら久

KARAKU



Relax and unwind on the shimmering banks of Lake Ashinoko

Hanaori is a sophisticated Japanese Spa resort where guests can unreservedly stop by for relaxation. The majestic nature and ambitious ripples of Lake Ashi whisper to your senses. Let the soothing warmth of the hot spring cradles you, creating a sense of peace. A design that gives beauty to every moment of your stay. Facilities that offer tranquility and relaxation. Buffet-style cuisine using the finest seasonal ingredients, blending the delicacy of Japanese cuisine with the elegance of Western cuisine to create a flavorful dining experience. In every aspect of the stay we provide services that bring joy and satisfaction.

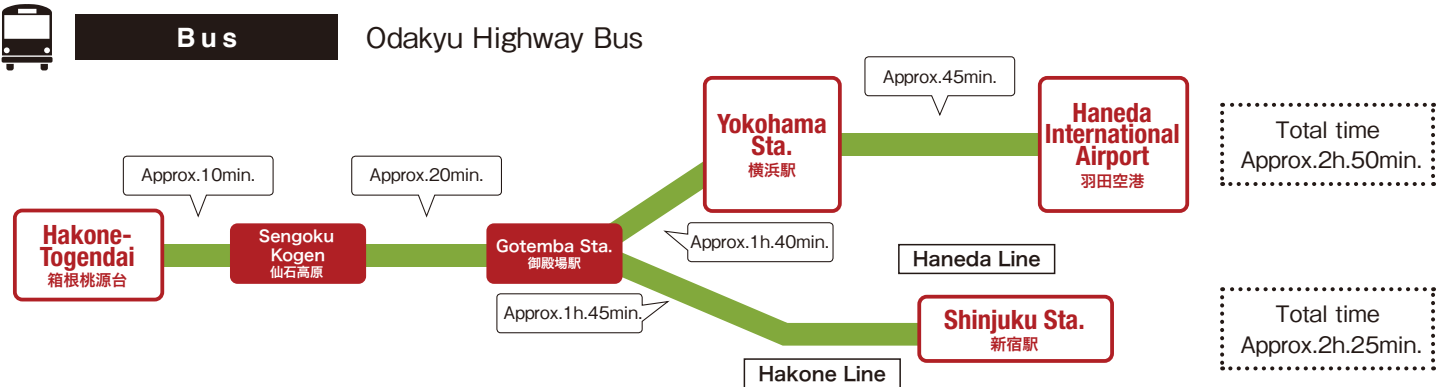
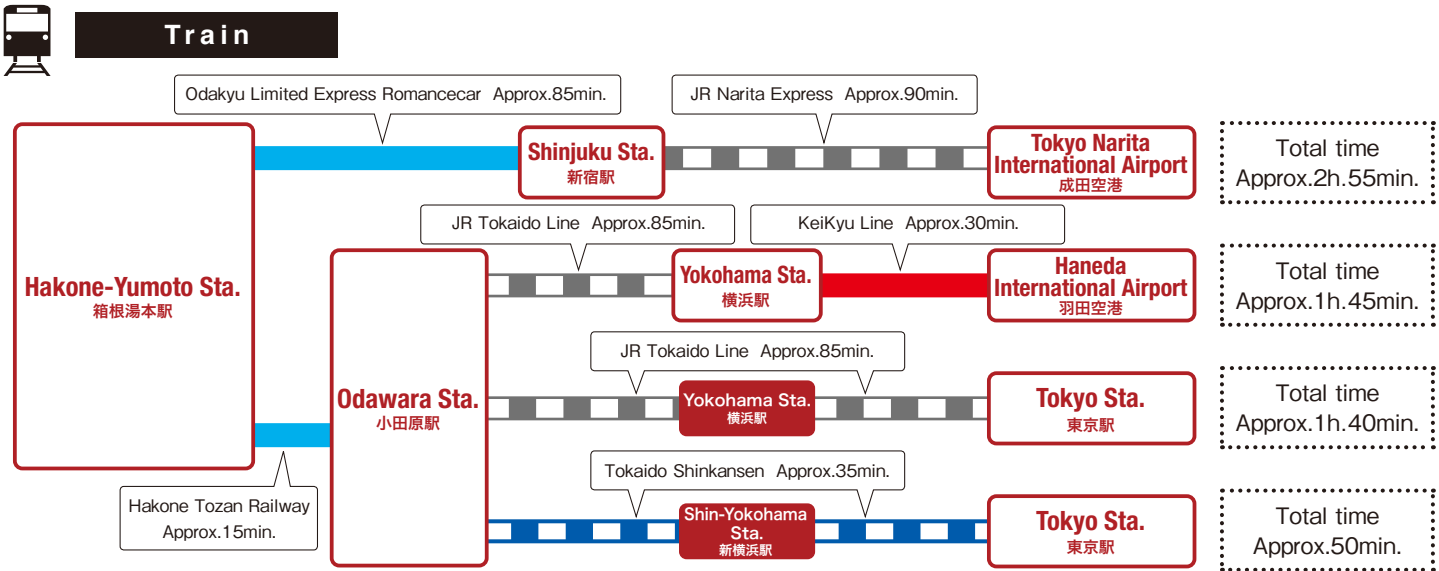
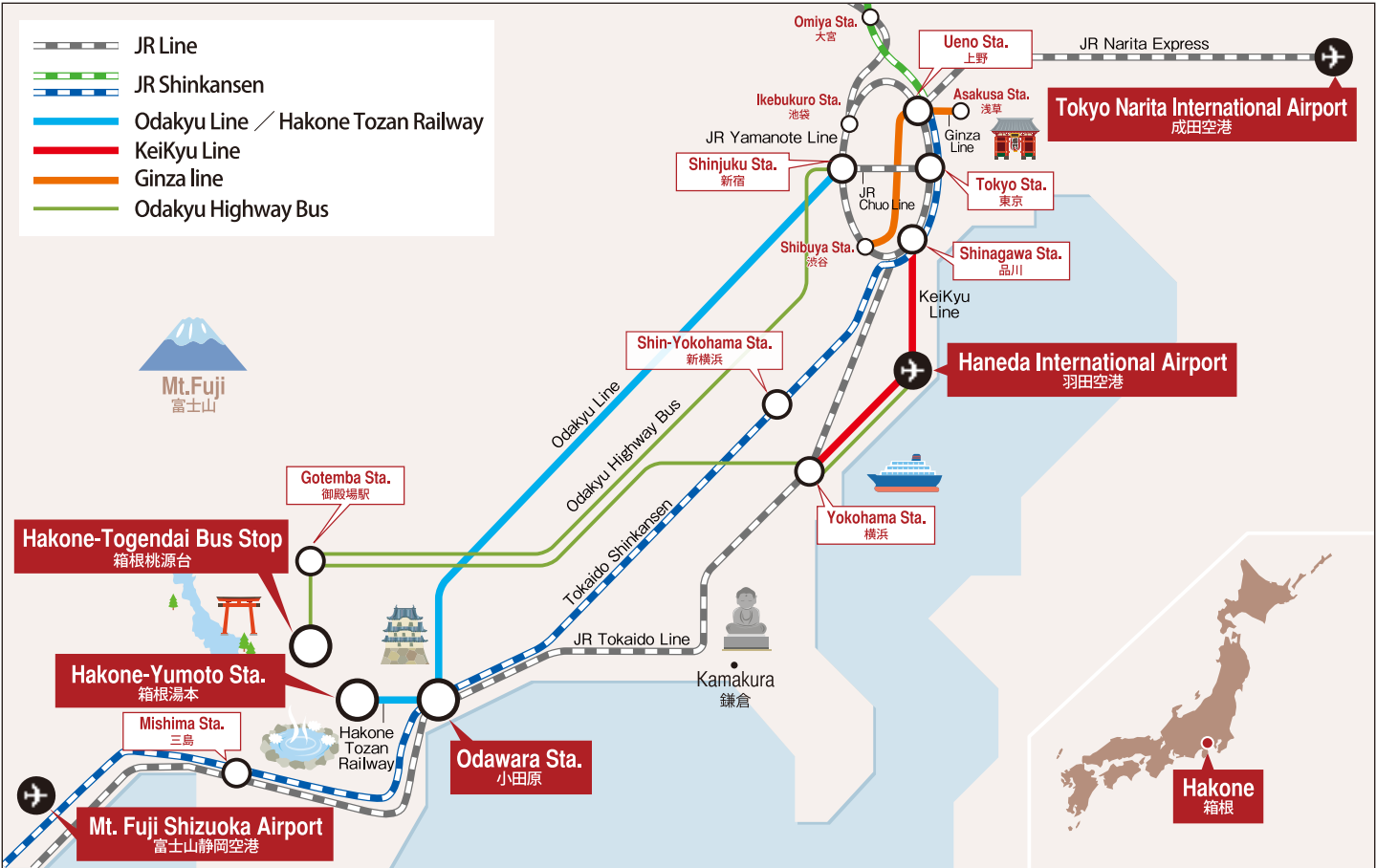
HAKONE ASHINOKO HANAORI

Tel. +81(0)460-83-8739 <https://hanaori.jp/ashinoko/>

160 Tougendai Motohakone Hakone-machi
Ashigarashimo-gun Kanagawa Pref. Japan



Getting to Hakone



*It is an example. Estimated time is subject to change depending on operation and road condition.

Let's Enjoy Hakone's Various Rides!

Whether cruising through the sky, crossing a lake, ascending or descending mountain trails on wheels or ropeway, Hakone boasts exciting ways to go and a chance to experience magnificent nature.



Hakone Tozan Cable Car

Travels at approximately 1.2km to connect Gora and Sounzan stations in 10 minutes.

Hakone Tozan Railway

Travel from Odawara to Gora stations while enjoying surrounding wilderness and breathtaking views from railroad bridges.

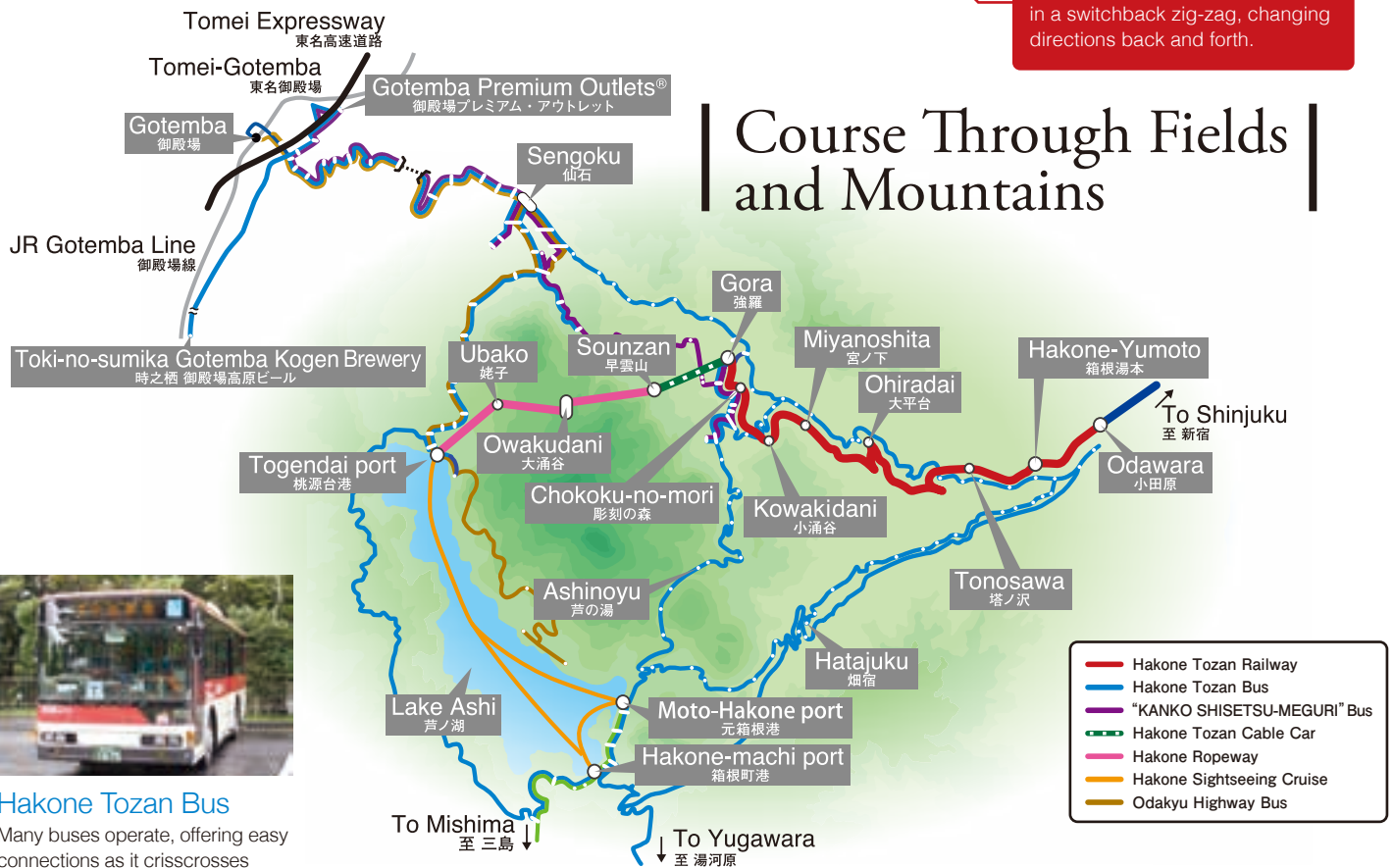


● Steepest pitch in Japan

Between Hakone-Yumoto and Kowakidani stations is an 80/1000 gradient, the steepest in Japan for an adhesion railway.

● Switchback

The railcar climbs the steep incline in a switchback zig-zag, changing directions back and forth.



Hakone Tozan Bus

Many buses operate, offering easy connections as it crisscrosses Hakone's fascinating mountain roads.

Hakone Ropeway

Enjoy the views during a 30-minute ride across four kilometers between Sounzan and Togendai stations, including the amazing Owakudani volcanic valley, Lake Ashi, and magnificent Mt. Fuji.



Hakone Sightseeing Cruise

operates between Hakone-machi, Moto-Hakone and Togendai on Lake Ashi. Enjoy the excellent hakone skyline and a panoramic view of Mt. Fuji.



Odakyu Highway Bus

Offers direct transit from Shinjuku, Tokyo, Haneda Airport and Yokohama to Hakone and Gotemba.



"KANKO SHISETSU-MEGURI" Bus

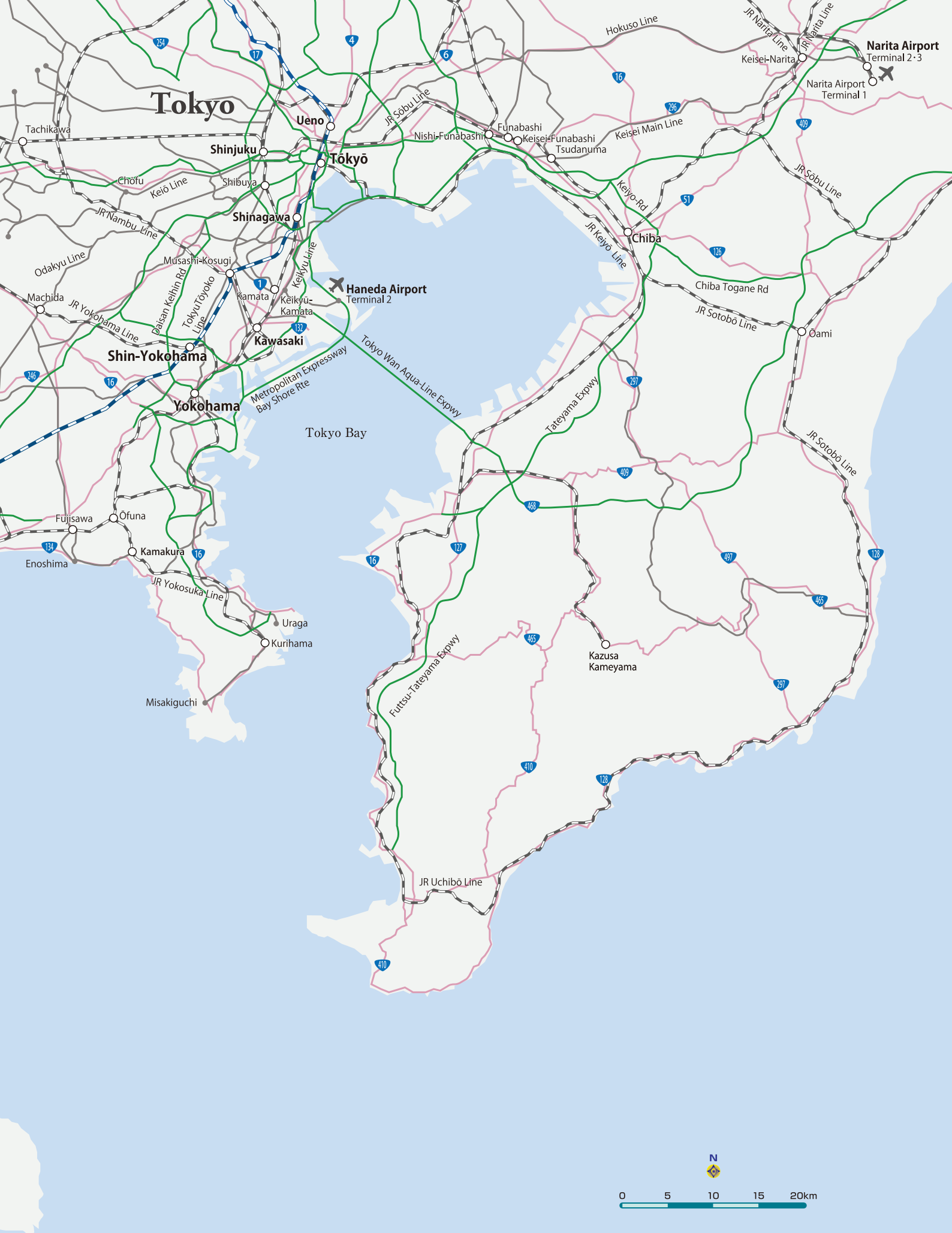
(Tourist Attraction Sightseeing Bus/ Hakone Tozan Bus)

This comfy way to go sports a fancy, retro-looking design as it circles tour locations like museums, with skylight windows for breathtaking views of sky and trees.

Wide Area

広域







Sengokuhara Pampas Grass Fields

仙石原スキ草原

Experience the sensual feel of pampas grass fields at the foot of Mt. Daigatake, renowned for showing Hakone autumn at its best. These golden fields, swaying as one in the fall breeze, are wonderful to see and touch.



Owakudani 大涌谷

Created roughly 3 millennia ago by steam explosions, "Great Boiling Valley" is an active volcanic zone sourcing Hakone hot springs and a hot tourist spot for Mt. Fuji views. Feel the volcanic power amid natural beauty.



Moto-Hakone, Hakone-Machi

元箱根・箱根町

Hakone Shrine

箱根神社

Established amid the Nara period, this shrine was dedicated to all the local gods of Kanto and now is known for obtaining fortune, protection against evil, wish fulfillment, and safe road travel.



Hakone Sekisho

(Check-point)

箱根関所

Feel the past come alive at this historic checkpoint for foot and vehicle traffic along the Tokaido Road, linking Edo (now Tokyo) and Kyoto in the Edo period. Inspection and tax collection were held in the Edo-style building.



Sengokuhara

仙石原

Miyanoshita, Gora

宮ノ下・強羅

Must



Hakone Gora Park

箱根強羅公園

Stroll around this French-styled park, opened in 1914, and get a clear sense of the design in bilateral symmetry around a fountain. Delights of the four seasons include a teahouse, ceramics, and flowers.



Hakone Stone Buddhas

箱根石仏群



Surrounding Shojin Pond is a stately gathering of Buddha sculptures and stone monuments going back 7 centuries. Among these sacred figures sits the contemplative Rokudo-jizo, carved out of rock and said to be Kanto's largest Buddha figure.

See in Hakone



Chisuji falls

千条の滝

Note how this waterfall, 3 meters high and 25 meters wide, flows quietly and hangs like a reed screen over moss-covered rocks in the upper reaches of Jakotsu River. Enjoy seasonal changes like summer's glowing fireflies and autumn's fiery leaves.



Odawara Castle

小田原城

No trip to Odawara will be complete without visiting this castle built by Omori Yoriharu, regional lord of Nishi-sagami during the Muromachi period (1337–1573). The Hojo Clan, entombed at Soun-ji, succeeded him in ruling from this historic fortress, said to have been the largest in Japan during the Warring States period.



Hotoku Ninomiya Shrine

報徳二宮神社

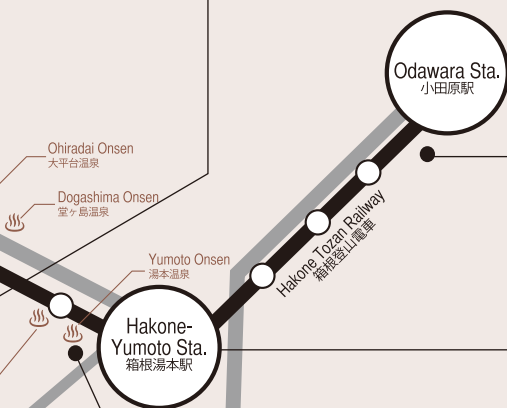
Established in 1894, next to Odawara Castle, the shrine has since been famous for the divine figure of Ninomiya Sontoku, well-known agriculturalist and philosopher.



Odawara Fishing port

小田原漁港

In addition to offering soothing sounds of harbor waters, this port serves up a rich sea harvest including horse mackerel and sardine. And being seaside, naturally the harbor has plenty of places to dine on the freshest seafood, possibly lunching on a catch hauled from the ocean by fishermen at dawn.



Hakone Old Tokaido Road

箱根旧街道



Amasake Chaya

甘酒茶屋



Historic teahouse open for business early in the Edo period sits perched on the Hakone stretch of the Tokaido Road, a portion legendary for being the most perilous on the old highway. Don't miss the tangy taste of sweet sake, yet another minor legend dating back to the start of the teahouse as well as naming it.



Ishidatami

石畳

This stone-paved road was built at the beginning of the Edo period to make travel smooth and easy for royals as well as commoners. Present-day travelers can sense the passage of time as they look out on scenery as beautiful and captivating as it was for Edo pilgrims, priest, poets and others.

Hakone-Yumoto

箱根湯本



Hakone-Yumoto

箱根湯本

Arguably the most vibrant and lively hot spring district in all Hakone, Yumoto will soon convince you of its superior features, like hot springs for day trips, firmly established inns offering traditional hospitality, and streets around the station chock-a-block with restaurants and souvenirs shops.



Yumoto-Kenban

湯本見番

Though it may be hard to believe geisha are not born but made, the daily training here of Yumoto geisha includes dancing, singing, reciting poetry, gracefully pouring drinks without spilling a drop, and more. In addition, seasonal events are held to demonstrate their accomplishments.

Breathtaking Views of Mt. Fuji

Mt. Fuji, symbolic home to Japanese people, became a World Cultural Heritage site by virtue of its beauty and being a source of spiritual as well as artistic inspiration. Experience all the joys of uniquely viewing Japan's sacred peak from Hakone and its environs.



from Mt. Taikan



from Onshi-Hakone Park



from Hakone Ropeway



from Mishima Skywalk



from Mt. Komagatake



from Jukkoku Toge



Mt. Fuji is also featured on the MiSMO Hakone net. Find out more here!

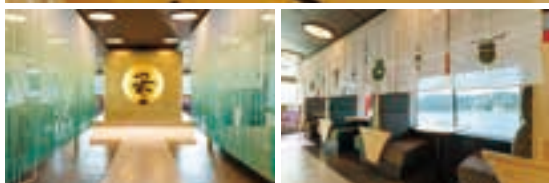


MiSMO Hakone net

Enchanting Cruises to Savor Mt. Fuji



Hakone Cruise Matcha Party
traditional Japanese colors of
dark brown and silver vermillion.
Chabatake Dandan seating area,
on the third-floor outdoor deck,
recalls a tea field.



Tatami-floored Kinpuan Tea Room (2F) is modeled on a gleaming golden
tea room. Enjoy the cruising pleasure of semi-private seating with *noren*.

A quiet and relaxing 70-minute cruise

Launch
date:
December
2025



HAKONE CRUISE *Matcha Party*

Unique Floating World of Japanese Tea Ceremony

This new sightseeing boat is inspired by the
Kitano Daichayu, a large-scale tea ceremony
historically held by Toyotomi Hideyoshi, in Kyoto,
over 400 years ago. Inside are different
spaces inspired by tea rooms and
tea fields that serve you savory
matcha sweets and drinks.



Matcha Latte with
Dango Topping

Matcha Pudding
with Ice Cream



Yokan
(Sweet Red Bean Jelly)

and Matcha Tea

A Lake Ashi cruise is a must when visiting Hakone. We recommend Hakone Cruise Matcha Party and Sorakaze, both offering a stable and spacious boat with panoramic views. Here are the charms of these two cruises.



First-floor seating features striking lighting with a lantern motif, with wheelhouse in view.



Beautiful views of Hakone are yours to behold from elegant round windows and our red-and-white deck.



Hull design harmonizes with the natural beauty of Mt. Fuji and Lake Ashi.



Cushions and other items bear Mt. Fuji motifs, while second-floor seating offers relaxing hanging chairs.

HAKONE PLEASURE CRUISE SORAKAZE

Enchanted & Enchanting Cruise: Green Park on the Lake

Launched in February 2024 and based on the concept of “a green park floating on Hakone’s Lake Ashi,” *Sorakaze* features a green design with natural grass and ivy-covered decks. Come join us aboard a cruise that feels like a park while enjoying open sky and pleasant lake breezes.



Fourth-floor Sora Deck features a Mt. Fuji-shaped monument, perfect for commemorative photos.



A raised tatami-floored space lets you enjoy a refined taste of Japanese culture.

Cruise Routes



Hakone Yusen

“HAKONE CRUISE Matcha Party”

“HAKONE PLEASURE CRUISE SORAKAZE”

[Access] 60-minute bus ride from JR or Odakyu Odawara Station to Hakone Sekishoato Port, Motohakone Port, or Hakone-en Port.



Exclusive to ミスモ箱根 readers
COUPON
One-day
free boarding
pass

Junior high school students and older: ¥2,400→¥2,280

Elementary school students: ¥1,200→¥1,140

Coupon and prices are valid until March 31, 2026.

- Unlimited boarding and disembarking at any port along the way (Hakone Sekishoato Port, Motohakone Port, Hakone-en Port, Kojiri Port)
- Kojiri Port is only for the Hakone Cruise Matcha Party.

Discover the Meaning & Source of **Hakone Yosegi Zaiku**?

Hakone Yosegi Zaiku was born in Hatajuku, a post town in Hakone where travelers passed through late in the Edo period (1603–1867). It is said to have started when people took particular note of the wide variety of trees in the Hakone mountains and made trays and boxes by combining

various woods with different colors and grains. The technique has been passed down to the present day, and in Japan the marquetry is made only in Hakone Town and Odawara City in Kanagawa Prefecture.

1 Skilled artisanal technique

Taneita (original or source plates) are made by combining various types of wood to create patterns. There are two techniques: (1) *zuku-bari*, in which the plates are thinly shaved to 0.15–0.2 mm thickness and applied to the outside of wooden products, such as small boxes; and (2) *muku-zukuri*, in which the original plates themselves are carved out and processed. Many years of experience and skill are required for cutting the wood at precise angles, measuring the dimensions accurately, and adeptly doing the adhesion stage.



3 Traditional patterns born from various woods

With some basic 60 traditional patterns used in Hakone marquetry, there are known to be as many as 100–200 different arrays by changing color and arrangement. By varying the type of combined woods and the affixed angle of cut materials, an appealing multitude of patterns is created.



Hexagonal hemp leaf



Waves



Tortoise shell



Manji-tsunagi
(key fret pattern)

2 The natural colors of wood

Since the mountains of Hakone became a national park, various types of wood from Japan and abroad have been used. The colors derive from each type of wood, and no additional coloring is done at all. Since the grain and texture of each wood variety differ, there happily are no identical products.



Let's try!

What's the Trick in a Trick Box?



TRICK
BOXES

Trick boxes incorporate a puzzle element that can be opened by moving the sides of the box in a set order. Simple ones can be opened by moving the trick mechanism four times, while complex ones can be opened by moving them as many as 72 times. They have existed since the Edo period and are said to have been used to hide valuables from thieves. Trick boxes, which combine practicality with a sense of fun, are popular among the many souvenirs that make your visit a memorable one.

Hakone marquetry:

A Proud Craft Tradition

Hakone Marquetry emerged from Hatajuku, Hakone, late in the Edo period (1603-1867). Hakone Maruyama Bussan is a shop specializing in Hakone Marquetry, located along the Hakone Hachiri Highway, near Lake Ashi. Here you'll find a wide array of original products, enjoy demonstrations by local artisans, and learn about the history of marquetry.



Demonstrations held every day!



Click
here!



hakone saiku



Hakone Maruyama Bussan
TEL.0460-83-6604

17 Hakone, Hakone-machi, Ashigarashimo-gun, Kanagawa Pref.
Hours: 10:00~17:00 (Closed at year-end and New Year's holidays,
& irregular holidays) Get off at Hakone Sekisho-ato stop, 45 min.
by bus from Hakone Yumoto Station.

**TAX
FREE**



Hakone Karakuri Museum
TEL.0460-83-7826

16 Hakone, Hakone-machi, Ashigarashimo-gun, Kanagawa Pref.
Hours: 10:00~17:00
(Closed at year-end and New Year's holidays, & irregular holidays)



- 1 The museum's classic Japanese garden, a Registered Monument of Japan, has one of the country's finest and most diverse moss gardens.
- 2 Savor *matcha* tea with seasonal sweets in a garden-viewing teahouse.
- 3 Mysteriously shaped rocks and azaleas of Sekiraku-en Garden.



Japanese Aesthetics and Beauty Amid the Savory Four Seasons

Aesthetic pleasures await you in Hakone's oldest art museum. Stroll a Japanese garden after viewing *tsubo* jars from the Kamakura and Muromachi periods (12th-14th centuries) and pottery from the Momoyama period (16th-17th centuries). Or relax from a seated garden view in a teahouse serving *matcha* tea with seasonal sweets. Bring this issue and enjoy entry-fee discounts of ¥110.

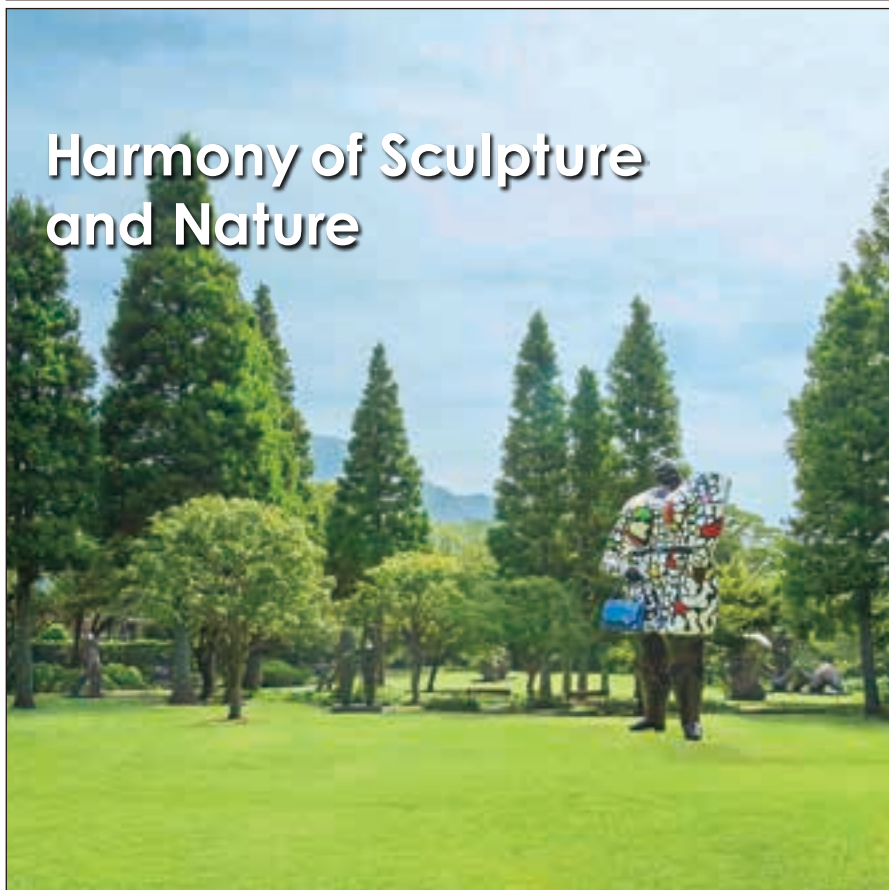
Hakone Museum of Art 箱根美術館

☎ 0460-82-2623  P32-C

▪ 1300 Gora, Hakone-machi, Ashigarashimo-gun, Kanagawa ▪ Apr.-Nov.: 9:30-16:30 / Dec.-Mar.: 9:30-16:00 (last admission 30 mins. before closing) ▪ Closed Thu. (open if a holiday / Nov.: open daily)
Note: The museum is scheduled to be closed for renovations from May 7th. ▪ Entry fees: adults, ¥1430; high school and university students, ¥660; junior high school students and younger, free ▪ A minute's walk from Koenkami Station (Hakone Tozan Cable Car)




Harmony of Sculpture and Nature



Opened in 1969, the Hakone Open-Air Museum is the first open-air museum in Japan. Located in the mountains of Hakone, it spreads over 70,000 square meters and offers beautiful views of the surrounding mountains. Surrounded by nature, this art museum is perfect for taking a leisurely stroll while appreciating art.



THE HAKONE OPEN-AIR MUSEUM

彫刻の森美術館 0460-82-1161  P32-C

★ 1121 Ninotaira, Hakone-machi, Ashigarashimo-gun, Kanagawa ★ 9:00-17:00 (Last admission: 16:30) ★ 365 days/year ★ adults ¥2,000 ; university and high school students ¥1,600 ; middle and elementary school students ¥800 ★ Hakone Tozan Railway to Chokoku-no-Mori Station, from which it is a 2-minute walk to the museum



POLA MUSEUM

OF ART

OF ART



SPRING RISING Through May 31, 2026

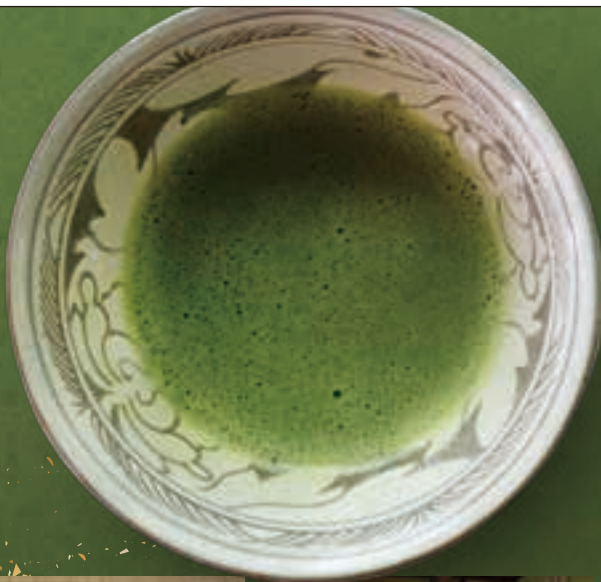
Upper Left: Nawa Kohei, *PixCell-Deer #74*, 2024, Pola Museum of Art ©Kohei Nawa, Photo by Nobutada OMOTE, Courtesy of SCAI THE BATHHOUSE Lower Left: Henri Rousseau, *Eve in the Garden of Eden*, ca. 1906-1910, Pola Museum of Art Upper Right: Paul Gauguin, *Dog in Front of the Hut*, 1892, Pola Museum of Art Lower Right: Utagawa Hiroshige, *Hakone: Night Procession in the Mountains*, no.11 from the series "Famous Views of the Fifty-three Stations," 1855, Hakone Museum of History and Folklore



POLA MUSEUM

Free Shuttle Bus From Gora Station (8min)

MAP P32-D



Enjoy matcha in a historic tea garden

Enjoy traditional Japanese culture at the historic tea garden of Hakuundo Cha-en, a registered tangible cultural property built in the 1910s.



Post on Instagram at
#gorapark_matcha
and receive
a small gift!

箱根 強羅公園
HAKONE GORA PARK 国登録記念物

Japan's first French formal garden opened to the public in 1914. Enjoy the 110-year-old Himalayan cedar, a symbolic tree, as well as a fountain pond and seasonal flowers.

1300 Gora, Hakone-machi, Ashigarashimo-gun, Kanagawa Pref.

0460-82-2825

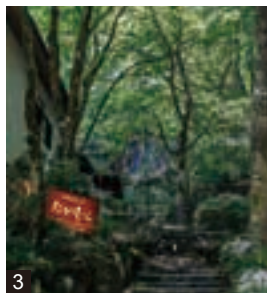
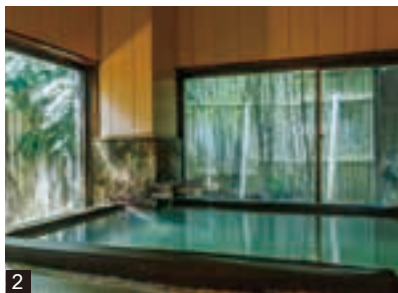
5-minute walk from Gora Station (Hakone Tozan Railway)



1 Magnificent bamboo forest reflected in the water's surface is a mystical sight.

2 Intimate bath house, Kiritsubo no Yu, is also charming.

3 The entrance is embraced by lush greenery.



Superb Milky-White Hot Spring Amid Bamboo Forest

Our inn boasts the milky-white Sengokuhara hot springs, a pure sulfur spring beneficial for skin and beauty. The large bath house, Genji no Yu, features large windows overlooking the bamboo grove in the garden. Immerse yourself in the fresh hot spring flowing directly from the source while taking in the view reminiscent of a Japanese painting. Day-trip bathing is also available from 10 AM to 3 PM (last admission, 2 PM). There's also a rest area overlooking the greenery through the large windows.

 **Hakone Onsen Sanso Nakamura**
箱根温泉山荘 なかむら

☎ 0460-84-6012  P32-D

- 1283-97 Sengokuhara, Hakone-machi, Ashigarashimo-gun, Kanagawa
- Parking available
- 26 minutes by bus from Hakone-Yumoto Station(Hakone Tozan Railway)

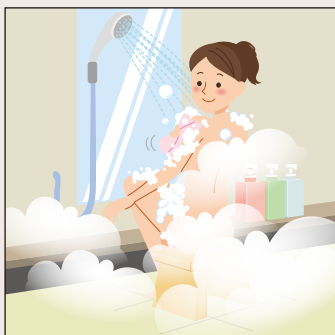


Point 2

Pointers on Bathing Etiquette

These are places to relax and heal your mind and body, so enjoy your time calmly and refrain from any public pool-type antics.

1 Wash before entering the bath!



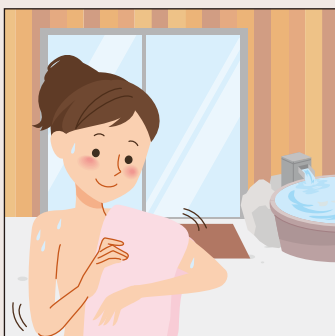
Wash face and body, then rinse off all soap before entering the tub. Enter naked, without wearing a towel, and enjoy soaking—only soaking.

2 No towels in the tub



Enter the bath slowly, to avoid splashing. As a matter of public hygiene, don't put or let your towel into the water and, in general, follow common-sense manners as well as these etiquette pointers.

3 Dry off after bath and before entering dressing room



Dry off with a towel in the bathing area, before entering the dressing room, to prevent the dressing room floor getting wet.

Onsen FAQs

- Onsen water can be quite dense and the heat intense, so avoid getting dizzy by limiting your time: don't soak too long (no more than 15 minutes). Immerse yourself up to neck or waist, no deeper, and be sure to hydrate before and after a bath.
- Bath water may have some "floaties" that are natural mineral components, not trash or filthy bits, so don't worry if something tiny comes your way.

1 2 days/1 night with meals from ¥13,350 per person. Day trip including bathing fees (11:00-15:00): Adults ¥1,000, Children ¥700

2 From the deluxe suite you can have a superb view of the Hakone mountain range to yourself.

3 In spring, the garden azaleas look magnificent.



Inn Featuring a Superb View of Mt. Fuji and Two Types of Hot Springs

Our guest rooms have large windows: on the garden side, they look out over Mt. Fuji and the Hakone mountain range; on the mountain side, they look out over vibrant green trees. We have two types of hot springs: simple and sulfur. In addition to a large bathhouse for our simple hot spring, there are four sulfur-spring baths that you can reserve without charge. For dinner, try our Japanese-and-Western dinner tray to savor both cuisines.



Hotel Kagetsuen
ホテル花月園

☎ 0460-84-8621 MAP P33-E

- 1244-2 Sengokuhara, Hakone-machi, Ashigarashimo-gun, Kanagawa
- 40 minutes by bus from Hakone-Yumoto Station (Hakone Tozan Railway)



Onsen Ryokan loved by local and overseas travelers

KAI is a leading brand of hot spring ryokan where every establishment offers a contemporary take on traditional Japanese inn whilst keeping Western comforts.



KAI Matsumoto
KAI Alps
KAI Okuhida
KAI Kaga
KAI Atami
KAI Anjin
KAI Ito
KAI Enshu
KAI Miyajima
KAI Tamatsukuri
KAI Izumo
KAI Nagato

KAI Beppu
KAI Yuftuin
KAI Unzen
KAI Aso
KAI Kirishima

KAI Teshikaga
KAI Poroto
KAI Tsugaru
KAI Akiu
KAI Zaou
KAI Kinugawa
KAI Nikko
KAI Kusatsu
KAI Sengokuhara
KAI Hakone

Onsen



Dining



Culture





- 1 A savory selection of sake and wine is available.
- 2 Ordered sushi arrives via conveyor belt.
- 3 Enjoy the culinary skills of our chefs from your counter seat.

Seafood Bounty from the Sea of Japan: Hakone's Only Conveyor-Belt Sushi Restaurant

Amid natural surroundings of the Hakone mountains, you'll savor fresh seafood, delivered straight from the fishing ports of Odawara and Numazu. To enjoy sushi at leisure with your small group, we recommend our counter seats, where skilled chefs may be watched up close. At booth seats, fresh-made sushi arrives via conveyor belt, assuring a genuine Japanese experience to entertain family and friends. English support is available.

 **Kanazawa Maimon Sushi Hakone Gora**
金沢まいもん寿司 箱根強羅

☎ 0460-87-1144 MAP P32-C

- 621-2 Miyagino, Hakone-machi, Ashigarashimo-gun, Kanagawa
- 11:00~22:00 (last order 21:30)
- Parking available



A relaxing space with a Japanese atmosphere.



- 1 Enjoy the refined dietary fat of locally sourced Ashigara beef in shabu-shabu with tofu.
- 2 Sit down to freshly cooked *kamameshi* featuring Gotemba-grown Koshihikari rice and seasonal ingredients.
- 3 Tranquil interior expresses a traditional Japanese atmosphere.

Ashigara Beef, Tofu Shabu-Shabu, and Seasonal Kamameshi

Our Ashigara Beef and Tofu Shabu-Shabu Set serves up two delicious Japanese dishes: silky hot spring tofu and locally sourced, high-quality Ashigara beef. The sweetness of tofu, simmered in alkaline hot spring water, harmonizes with the refined dietary fat of the Ashigara beef. *Kamameshi* pot rice, using select grains and carefully cooked in an earthen pot, has the tantalizing, exquisite aroma and umami of freshly cooked rice. There are three standard varieties featuring chicken and seasonal vegetables, as well as seasonal *kamameshi* cooked with ingredients of the season.

 **Hakone Tofu Chaya Yasohachi**
箱根とうふ茶屋 八十八

☎ 050-1720-1698 MAP P32-D

- 184-1 Sengokuhara, Hakone-machi, Ashigarashimo-gun, Kanagawa
- 10:00 ~ 15:00 (last order 14:00), 17:00 ~ 21:00 (last order 19:00)
- Closed Wed.
- 25 minutes by bus from Hakone-Yumoto Station (Hakone Tozan Railway)



An outdoor moss garden exudes traditional Japanese beauty.



1 Bekko-meshi Wagyu Rib Roast (¥2,970) features miso and wagyu beef grilled on a large *hoba* (magnolia) leaf.
2 Clay pot rice is cooked fresh to order.
3 A wide variety of Obanzai side dishes is yours in a buffet-style selection.

Savory Rice Cooked in a Clay Pot On the Shores of Lake Ashi

Ashinoko-chaya, located on the approach to Hakone Shrine, serves our original rice carefully selected by a rice master and cooked in a clay pot along with a wide variety of side dishes. Choose from two options: Nokke-meshi, fluffy rice cooked in a clay pot and topped with side dishes; or Bekko-meshi, in which you savor clay pot rice and side dishes separately. Enjoy the natural flavor of the rice and carefully selected side dishes while gazing at the pirate ship afloat on Lake Ashi.

 **Ashinoko-chaya**
あしのご茶屋

☎ 0460-83-6731  P33-E

- 6-8 Motohakone, Hakone-machi, Ashigarashimo-gun, Kanagawa
- 11:00 ~ 16:00 (last order 15:30)
- Closed Thu. (subject to change, depending on the season)
- 2 minutes walk from Moto-Hakone Port



Warabimochi is a delightful Japanese sweet with melt-in-your-mouth texture.



1



2



3

1 2 The hearty Japanese Black Beef Yakiniku Bento (¥1,980). Simply pull the string extending horizontally from the *bento* box side and wait five to six minutes for your lunch box to get warm.

3 Tai-meshi (¥980), a signature product popularly enjoyed since the Meiji period (1868-1912).

A Taste of Japanese Culture: Ekiben

Bento is a portable lunch box for one, a signature staple of Japanese food culture. *Ekiben* is the abbreviated Japanese for “*bento* sold at stations,” which incorporates savory local ingredients. The Japanese Black Beef Yakiniku Bento from Toukaken, a long-established restaurant in Odawara, is a dish made to suit modern tastes, allowing full enjoyment of the *umami* of Japanese black beef. There also is *tai-meshi* (rice with sea bream), a historic *ekiben* made via traditional methods and loved for many years. Try the two and enjoy the inviting flavors of *ekiben*.

 **Toukaken Odawara Station
Shinkansen Waiting Area Shop**
東華軒 小田原駅新幹線待合売店

☎0465-47-1186 (Order Center) MAP P30-A

- Inside JR Tokaido Shinkansen's Odawara Station,
1-1-1 Shiroyama, Odawara-shi, Kanagawa
- 6:25-19:00

Note: Prices and business hours are subject to change.



A shop inside the ticket gates of JR Tokaido Shinkansen's Odawara Station.



Owakudani Black Eggs

大涌谷黒たまご

Black eggs, a local specialty, owe their unique look and taste to boiling in hot spring ponds (80°C) and then steaming at 100°C. Watch for yourself as shells turn black when immersed in hot spring minerals. Eat one, legend says, and you'll be blessed by Jizo Bosatsu (bodhisattva assuring longevity and healthy child-rearing) and your life extended by seven years.



Yuba & Tofu

湯葉&豆腐

Tofu comes from coagulating soy milk (pressed from beans) with bittern into small blocks, and *yuba* from skimming off the top layer of heated soymilk. Hakone tofu and yuba, made with delicious local water, are known for "sweet" flavor and aroma.



Hakone Gourmet Foods



Soba (buckwheat noodles)

そば

This traditional Japanese food goes back some 300 years and is made from ground buckwheat grain seeds. The deciding factor is water when making the noodles, which then offer a rich aroma and enjoyable texture. Good-quality water gushes in Hakone, so the taste of soba made here is specially delicious and popular.

Umeboshi (pickled plums)

梅干し

Japanese plums or *ume* are pickled in salt and dried in sunlight. The resulting *umeboshi* have been used as highly portable food by itinerant travelers passing through Hakone since the reign of the Odawara Hojo Clan and were highly valued in the Edo period by samurai accompanying *daimyo*. Unique Odawara varieties include *shisomaki umeboshi* (pickled ume wrapped in perilla leaf).



Kamaboko (fish cake)

かまぼこ

These fish cakes made from kneading then steaming minced white fish are known for their characteristic elastic texture and rich flavor. Transportation was inconvenient in the Edo period, so Odawara *kamaboko*—as preserved food made from fish caught fresh here—was served at local inns in Hakone. News of its delicious flavor soon spread nationwide.





Odawara Chochin (Odawara lantern)

小田原ちょうちん

These paper lanterns are made by attaching paper to a frame of thin bamboo sticks and are lit by a candle within. Odawara *chochin*, said to have been created during the Edo period for travelers crossing the Hakone mountains, can be neatly folded and put away. What's more, they're resistant to rain and fog. Being partially made from sacred trees, they were also used as a talisman against evil.



Yosegi-Zaiku (marquetry goods)

寄木細工

Hakone Yosegi-Zaiku come from combining various kinds of wood to create geometric shapes utilizing wood hues and grains. These are then planed down and affixed to small boxes and other items. This craft dates back to the late Edo period and a wide range of goods, including boxes and coasters, are still made today as traditional Hakone craftwork.



Onsen Manju (hot spring steamed bun)

温泉まんじゅう

This famous hot spring steamed bun is named for hot spring water used in the dough and for being steamed in hot spring vapors. They're sold not only in boxes to take home as gifts but also sold individually in stores, so be sure to try a freshly steamed bun when you visit.

What to choose from the fine assortment of Hakone gourmet foods and traditional goods? A difficult decision, but don't miss out on black eggs (unique to hot springs), tasty buckwheat noodles, elegant marquetry, and so much more!

& Odawara & Good Goods



Seafood Cuisine

海鮮料理

Hakone and Odawara, located between Sagami Bay and Suruga Bay, provide an abundant harvest of seafood, which means there's a wide variety of fresh fish, including sushi. Odawara has its own fishable harbor, so you can enjoy fresh catches of the day.

Wakasagi (pond smelt)

わかさぎ

A freshwater fish of Lake Ashi, *wakasagi* is a local specialty chosen for the Top 100 Local Specialties in Kanagawa. It's been used in local cuisine throughout the ages, and now you can try a variety of dishes like deep-fried or sweet boiled fish at restaurants near the lake.



Fifty-Three Stations of the Tokaido : Walked by Samurai



Fifty-Three Stations?

After winning the Battle of Sekigahara, a decisive battle in Japanese history, Tokugawa Ieyasu began his campaign to unify the country in 1601. One of the projects was the Five Highways, which started at Nihonbashi, in Edo (now Tokyo).

The Tokaido road linked Edo to Kyoto, with 53 post stations along its 492-km route. Mileposts were positioned every *ri* (about 4 km), and stations staffed with horses and servants for travelers to move on to the next station. It became a key transportation route supporting the travel of feudal lords for their alternating attendance or residence in Edo. It also served commerce and became a route for common people to visit shrines and take hot spring cures.

Utagawa Hiroshige's colorful woodblock print series, titled *Fifty-Three Stations of the Tokaido*, powerfully present this image today. They're not just pictures of famous places, but a potent wide-format *nishiki-e* (colored woodblock prints) depicting how people lived, the changing seasons, and even the harsh conditions of the journey. The work has become a huge hit.

Although the scenery Hiroshige configured has changed significantly, many places in the terrain and along the route still retain the appearance he captured. Many travelers now walk along this road, as they had done in the past.

Hakone Hachiri: Japan Heritage Site Linking Odawara, Hakone, and Mishima

The Hakone Hachiri covers a stretch of the old Tokaido highway from Odawara to Hakone and Mishima, crossing Mount Hakone from east to west. It flourished as a major road during the Edo period (1603-1867), laid with the most magnificent stone paving in Japan at the time to support the bustling traffic.

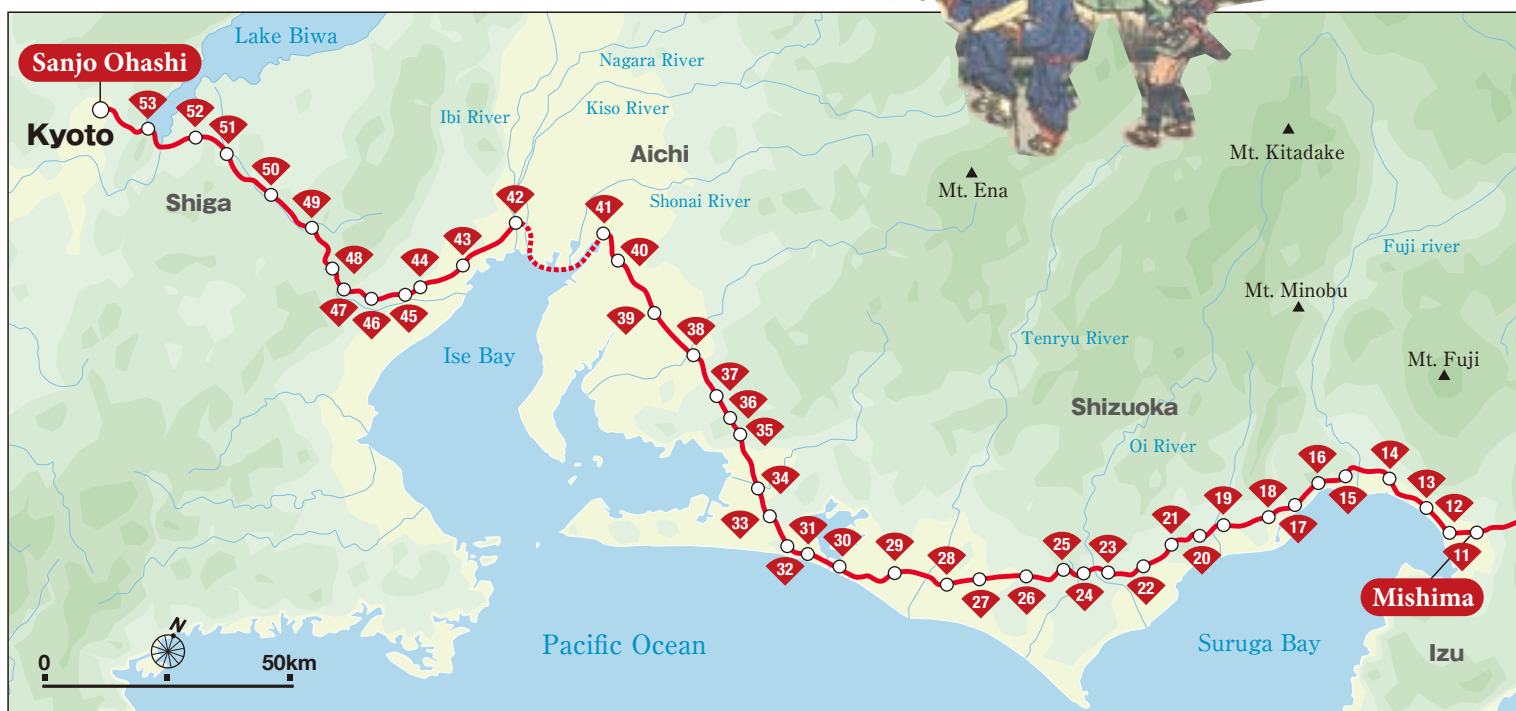
Walk along it and you'll see the same scenes as in the past—with teahouses, checkpoints, rows of trees, and mileposts. In this way, you're time travelling on the road of the Edo period.

- 01 Cobblestone road
- 02 Amasake Chaya (teahouse), standing now as it was in the Edo period (1603-1867)



01

02



Historic Road Built Under a Shogun,



Hakone Kosuizu (*The Lake at Hakone*), by Utagawa Hiroshige



11 Mishima

Having flourished as *monzenmachi* (town built around a temple or shrine) for Mishima Taisha Shrine, Mishima was where people celebrated their safe passage over the Hakone mountains. Even today, the underground waters of Mt. Fuji flow throughout the town, providing comfort to travelers as a “city of water.”



10 Hakone

The mountain road runs with an elevation variance of about 800 meters. It played an important role as a line of defense, being the closest checkpoint to Edo. Many remnants of the time, such as the cobblestone road, can be enjoyed around Hatajuku, a town known for its fine craft of marquetry.



9 Odawara

With choke points to the east and west, Odawara was a post town with many travelers staying overnight—one of the largest on the Tokaido. Its specialties, like *kamaboko* (fish cake) and Odawara lanterns, have been widely known, and today the happy visitor may see many long-established shops from the Edo period.



1. Shinagawa
2. Kawasaki
3. Kanagawa
4. Hodogaya
5. Totsuka
6. Fujisawa
7. Hiratsuka
8. Oiso
9. Odawara
10. Hakone
11. Mishima
12. Numazu
13. Hara
14. Yoshiwara
15. Kambara
16. Yui
17. Okitsu
18. Ejiri
19. Fuchu
20. Mariko
21. Okabe
22. Fujieda
23. Shimada
24. Kanaya
25. Nissaka
26. Kakegawa
27. Fukuroi
28. Mitsukeyama
29. Hamamatsu
30. Maisaka
31. Arai
32. Shirasaka
33. Futagawa
34. Yoshida
35. Goyu
36. Akasaka
37. Fujikawa
38. Okazaki
39. Chiryu
40. Narumi
41. Miya
42. Kuwana
43. Yokkaichi
44. Ishiyakushi
45. Shono
46. Kameyama
47. Seki
48. Sakashita
49. Tsuchiyama
50. Minakuchi
51. Ishibe
52. Kusatsu
53. Otsu



- A** Odawara 小田原
- B** Hakone-Yumoto 箱根湯本
- C** Miyanoshita / Kowakudani / Gora
宮ノ下・小涌谷・強羅
- D** Sengokuhara 仙石原
- E** Ashinoko (Lake Ashi) 芦ノ湖

Hakone/ Odawara

箱根・小田原

B Hakone-Yumoto | 箱根湯本



Hakone Tourist Information Center



Obtain here the latest information of the whole Hakone area, such as sample trip plans and the best spots of the season. English-speaking staffers are available to help plan your trip around Hakone.

Hakone Tourist Information Center

Open hours 9:00~17:45 (open every day)

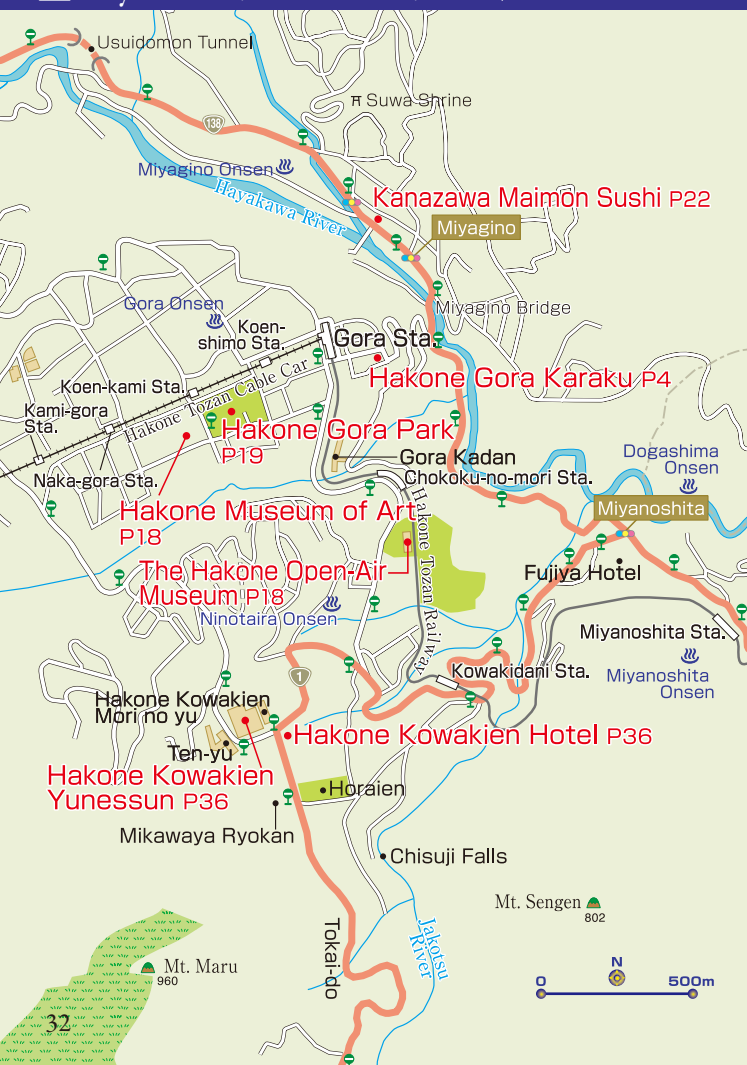
TEL 0460-85-5700 MAP P32-B



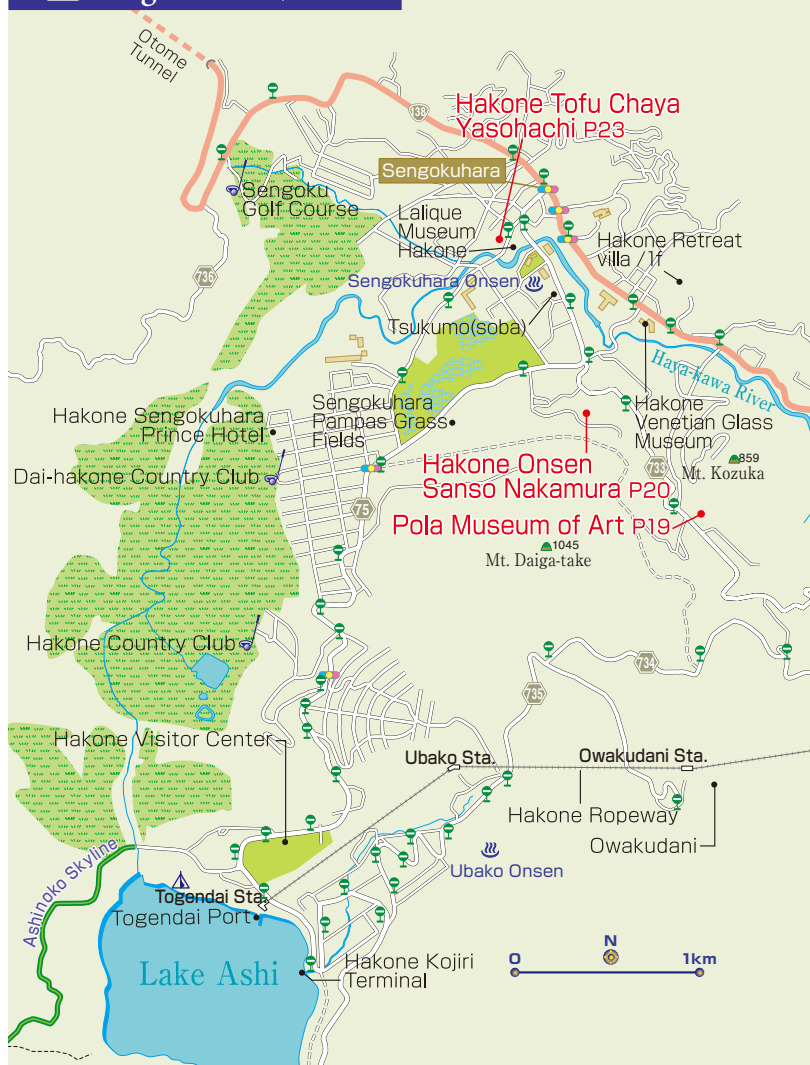
Nature, hot springs, and art await in Hakone. Discover healing moments and scenic beauty in every season.

Hakone Convention Bureau

C Miyanoshita / Kowakudani/ Gora | 宮ノ下・小涌谷・強羅



D Sengoku-hara | 仙石原



E Ashinoko (Lake Ashi) | 芦ノ湖



MiSMO HAKONE ENGLISH vol.20

Publisher

Nakamura Kazuhiro
中村 和広

Editor-in-Chief

Maki Yoshiko
牧 淑子

Deputy Editors

Makino Sachi
牧野 祥

Sales Planner & Editor

Yonenaga Yoko
米永 洋子

Aihara Kayoko
相原佳代子

Horikoshi Misa

堀越 美沙

Designers

Ushiro Nana

後 奈那

Ono Chieko

小野千恵子

Hirata Akane

平田 西

Yakire Meiko

八切 明子

Bravo Graphics

ブラボーグラフィックス

Map Design

Kobayashi Shigeko
小林 重子

DTP Staff

Shirasawa Junna
白澤 淳奈

English Translation

McDavis Associates, Inc.
マック・デヴィスアソシエーツ

Cooperation 協力

Odakyu Electric Railway Co., Ltd.
小田急電鉄株式会社

Odakyu Hakone Group

小田急箱根グループ

HAKONE TOWN

箱根町

HAKONE Convention Bureau

箱根コンベンションビューロー

Hakone Tourism Association

一般財団法人箱根町観光協会

Odawara City

小田原市

Published by 発行

INCLUDE Co., Ltd.
株式会社インクルーブ

<https://mismo-hakone.jp>

本誌の広告に関するお問い合わせは
株式会社インクルーブ

〒215-0017

神奈川県川崎市麻生区王禅寺西3-12-10

佐熊ビル3F

営業企画部 ☎044-959-3750

Printing & Bookbinding 印刷・製本

SANKI SOGO PRINTING Corporation
サンケイ総合印刷株式会社

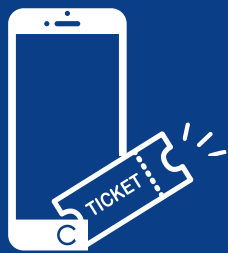
次号は2026年7月発行予定です。



MiSMO Hakone Instagram



Hakone Freepass



Hakone Freepass gives you unlimited rides on 8 transportation networks and discounts at affiliated facilities in the Hakone area with just one ticket!

Round-trip Ticket

A discounted round-trip on the Odakyu Lines



Unlimited rides on 8 transportation networks in Hakone



Locations perks and discounts

Fares	2 Days		3 Days	
	Adults	Children	Adults	Children
From Shinjuku	7,100 yen	1,600 yen	7,500 yen	1,850 yen

Buy online



Browned-Butter Melon Bread

Enjoy the sumptuous flavor of butter in our waterless brioche dough, made with plenty of butter and eggs, and topped with cookie dough to achieve a distinctively rich browned-butter flavor.



Coming soon to
**Haneda
Airport!**



Hakone Bakery

Enjoy Japan's Long-Loved Melon Bread.

Our bakery was born and “bred” in Hakone, one of Japan’s leading resort areas. Among savory choices you can treat yourself to, our “Hospitality bread,” made with carefully selected, high-quality ingredients and the skilled techniques of artisans, is offered.

Enjoy a savory moment of enrichment for palate and spirit while you’re on the go.

Hakone Special Melon Bread

A huge hit at the Ebina Service Area (inbound), this orange dough filled with melon cream is further enriched with the juice of Hokkaido-produced melon.



Hakone Bakery Co., Ltd.

154-1 Kazamatsuri, Odawara-shi,
Kanagawa Prefecture
TEL: 0465-46-6500

Hakone Bakery Select Ebina Service Area Shop

[1F, Ebina Service Area, Tomei Expressway, inbound]

5-1-1 Oya Minami, Ebina-shi, Kanagawa Prefecture TEL: 070-1351-7751
Hours: 7:00-22:00, Daily Note: Ebina Service Area Shop prices may differ from our other shops.

Lantern Night

Write your wish on a lantern, release it into the sky, and watch the night light up in a magical glow.

Open daily from 7 PM (reception from 6:30 PM)

Note: Open and reception times vary by season.

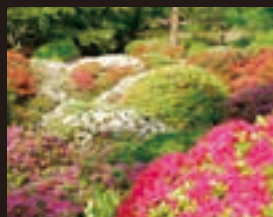
(Contact the facility regarding those times.)

Light, Food, Hot Springs

Enjoy Hakone's Many Charms at Hakone Kowakien Hotel

Lunch Buffet & Hot Spring

Sit down to savory lunchtime choices at Buffet Restaurant Fontainebleau and immerse yourself in a soothing soak at Mori no Yu, Hakone Kowakien Yunessun's day-trip hot spring. At adjacent Horaien Garden, enjoy a stroll amid year-round charms of seasons, like our lovely azaleas in spring.



Official website



Dinner Buffet & Lantern Night



Buffet Restaurant Fontainebleau serves up all-you-can-eat choices of some 60 dishes, including beefsteak, *kushiage* (deep-fried skewered meat and veggies), sushi, traditional Kowakien ramen, and Kowakien curry—all made complete with all-you-can-drink alcohol and soft drinks!

Scan to apply



箱根ホテル小涌園
HAKONE KOWAKIEN HOTEL

1297 Ninotaira, Hakone-machi,
Ashigarashimo-gun, Kanagawa-ken

By train About 90 min. from Shinjuku Station to Hakone-Yumoto Station by Odakyu Romancecar About 20 min. from Hakone-Yumoto Station by Hakone Tozan Bus or Izu Hakone Bus, or About 45 min. from Hakone-Yumoto Station to Gora Station by Hakone Tozan Railway
By car (From Tokyo area) Tomei Expressway→Atsugi I.C.→Odawara Atsugi Road→Hakoneguchi I.C.→National Route 1→Hakone Kowakien (about 60 min. from Atsugi I.C.) / (From Shizuoka / Gotemba area) Tomei Expressway→Gotemba I.C.→National Route 138→Turn right at the Miyanosita flashing light→National Route 1→Hakone Kowakien (about 40 min. from Gotemba I.C.)